



**KING COUNTY FIRE PROTECTION DISTRICT 34
REDMOND, WASHINGTON**

RESOLUTION 340-24

AMENDMENT TO EMERGENCY OPERATING AGREEMENT

WHEREAS, the Board of Commissioners of King County Fire Protection District No. 34 and the City of Redmond entered into an Emergency Services Operating Agreement dated August 19, 2022 (“Agreement”),

WHEREAS, the Board of Commisisoners of King County Fire Portection District No. 34 and the City of Redmond entered into the Emergency Services Operating Agreement for the purpose of contracting with each other to establish fire prevention, education, suppression, emergency preparedness and emergency medical services for the citizens within their respective boundaries,

WHEREAS, the City of Redmond has or will establish reasonable fees and charges for the provision of emergency medical services to reimburse the City for its costs of providing emergency medical services to individuals,

WHEREAS, the Commissioners have reviewed the proposed charges to the Emergency Services Operating Agreement and concur with the City that the agreement should be amended to account for collection of fees for emergency medical services as authorized by RCW 52.12.131 and which may be collected by the City of Redmond on behalf of the District pursuant to RCW 52.12.135; NOW THEREFORE, be it

RESOLVED, by the Board of Commissioners of King County Fire Protection District No. 34 that Article XI, section C, subsection 6 of the Agreement is amended to add the following underlined language to read as follows:

6. Credits: The District shall receive the following as credits against its payments to the City:


That portion of King County Emergency Medical Service funds received by the City and attributable to the District.

Any and all net revenues received from calls originating within the District for medical services pursuant to the attached fee schedule and billing policy established by the City of Redmond.

BOARD OF COMMISSIONERS



Thomas Johnston, Commisisoner



Jerry Nuernberger, Commissioner

Jim Jensen, Commissioner

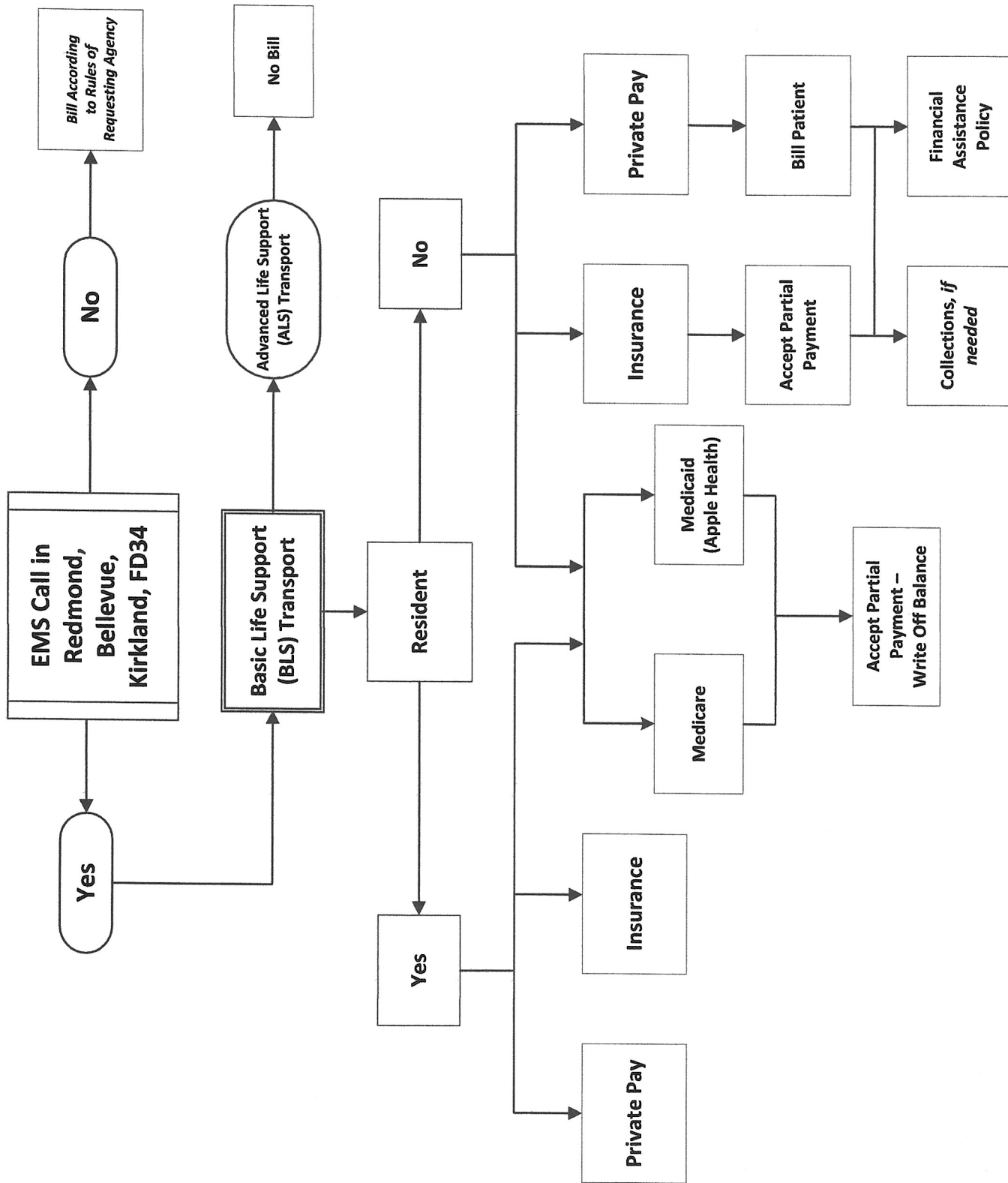
Adopted at a special meeting of the Board of Commissioners of King County Fire Protection District 34, held November 4, 2024.



Beth Padilla, Secretary to the
Board of Commissioners

City of Redmond Proposed Fee Schedule for EMS Transport

- Redmond: \$1,000 base fee plus \$20 per mile - Proposed



BASIC LIFE SUPPORT TRANSPORT BILLING POLICY

Policy:

It is the policy of the City of Redmond (the City) to bill third-party payers and patients for emergency medical services (EMS) transportation user fees in a fair, equitable and consistent manner.

Responsibilities:

The City or its billing contractor will conduct billing and collection according to the guidelines included in this policy.

Definitions:

- 1) Resident: A person living within the boundaries of the City. Until otherwise specified, for purposes of EMS transport billing only, persons who live or work within the boundaries of the Redmond, Bellevue, Kirkland and King County Fire District 34 will be treated as residents in reciprocity with these cooperating agencies. The City reserves the right to add to or remove from this list of cooperating agencies.
- 2) Third-party payer: Medicare, Medicaid, private medical insurance, supplemental medical insurance, Labor and Industries industrial insurance, accidental-injury insurance and or any other insurance payer that may be properly billed for emergency medical transportation fees.

Guidelines:

- 1) City of Redmond Billing Procedure for Third-Party Payers: The City will bill third-party payers according to the City's existing rate schedule, which may be amended from time to time. The City will send no more than three bills to a third-party payer related to an individual transport incident. If no payment is received within thirty (30) days after the final billing, the City may assign the account to a collection agency to collect that portion of the transport fee for which the third-party payer is responsible.
- 2) Medicaid Patients: Pursuant to federal law and the patient's indigent status, the City will accept that amount paid on behalf of any Medicaid patient (regardless of resident status), along with any available supplemental insurance payment, as full and final payment of the transport fee and will write off the balance.
- 3) Patients Who Have Other Insurance:
 - i) Residents: The City will bill the third-party payer(s) and will accept the amount received from the third-party payer(s) as payment in full. Any remaining balance will be written off in consideration for EMS levy taxes paid by the resident patient. If the

- 7) Financial Assistance: The City reserves the right to waive any transport fee on a case-by-case basis in accordance with the City's Financial Assistance Policy.