

Joint Meeting: Parks, Trails & Recreation Commission & City Council

June 10, 2025



Redmond
WASHINGTON



Agenda

- Introductions
- June '24 – June '25 Recap
- 2025 Priority Projects
- Youth Advocate Project
- Community Gardens Update
- 2025 PTRC Work Plan and Discussion

2025 Parks, Trails, and Recreation Commission



Clint Smith
Chair



Garrett Michaud
Vice-Chair



Jodi Pena



Stuart Hargreaves



Siri Bliesner



Jim Kleppe



Greg Laird



Praveen Rachakulla



Kristina Wayland



Shailja Tyagi
Youth Advocate



Arya Nagvekar
Youth Advocate



*The role of the Parks, Trails, and Recreation Commission is to make recommendations to the Mayor and Council concerning **the improvement and development of parks, playgrounds, trails, and recreational facilities.***

*To **identify future needs** and interests for the PARCC plan and Comprehensive Plan.*

*To make recommendations regarding **rules, management, and policies** related to parks.*

*To **involve Redmond citizens** and park users in issues related to parks & recreation.*



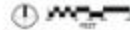
Southeast Redmond Neighborhood Park Masterplan



05/14/24

berger

Overall Preferred Concept Plan



Southeast Redmond Park | Master Plan Report

01

MARCH 2024



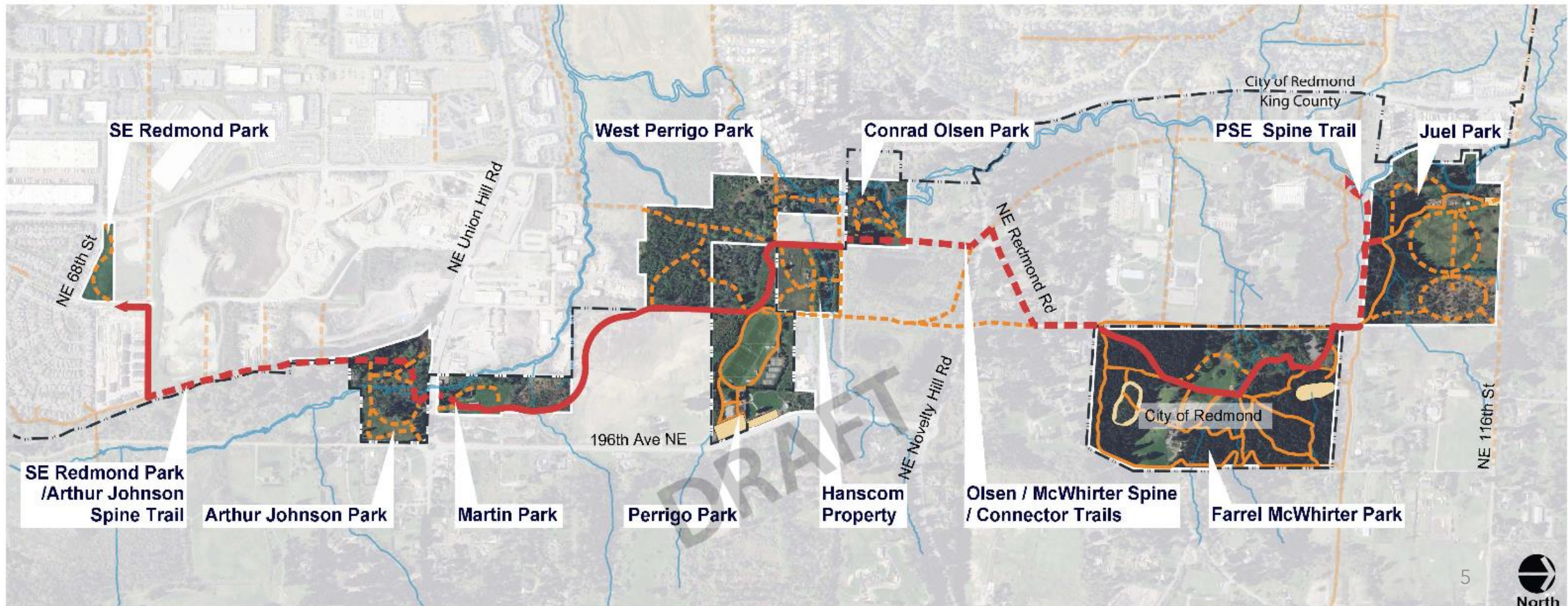
June '24 - June '25 Recap

- SE Redmond Park Master Plan Finalized and Budget Approved!
- East Redmond Corridor Subcommittee and Consultant completed final Implementation Plan.
- Wayfinding Consultant and Subcommittee.
- Big Success: Pop-up Dog Parks and Community Gardens.
- Youth Advocate Project: Planning to Presentations.



2025 Project Priorities: East Redmond Corridor (ERC)

East Redmond Corridor Overview



ERC Plan

- ERC Implementation Plan by HBB completed (final draft) March 2025 and reviewed with PTRC
- Timelines: Early Action Projects (1-5 years) through longer-term projects (11-20+ years)
- Target Early Action Projects that can be started or completed with minimal budget, including volunteer activities

Early Action Projects

The early action projects are the phases that provide an impactful improvement for the corridor but are lower in cost, require minimal design or permitting, and could potentially be supported by volunteer efforts. All of these projects would be considered a high priority. Funding would be allocated from city resources outside of the CIP process.

CIP Projects

The CIP (Capital Improvement Program) projects are the larger projects that would require a more extensive design process, permitting process, and high construction costs. Some of these projects may also have an associated planning project depending on how much information was provided in the master plans or how much the current conditions have changed since the development of the master plans.

Planning Projects

Planning projects are any project that will require property acquisitions/agreements or need an additional master planning process. Many of the planning projects will also have an associated CIP project.

High Priority (1-5 Years)

Criteria used to determine early action projects include:

- Open up the undeveloped park properties, which includes a park monument and rules sign, some initial programming (passive uses), and site security for existing structures where applicable.
- Providing safe access to each park whether through cross walks, adding temporary parking, or trail ADA connections into the parks.
- Providing ADA accessible amenities at each park, such as a ADA parking stalls, and ADA connections to existing park amenities.
- Integrate wayfinding and interpretive elements within each park and along the Spine Trail.

High Priority (1-10 Years)

Criteria used to determine higher priority projects include:

- Provide permanent amenities for the currently undeveloped parks.
- ADA accessible trails to park amenities.
- Additional points of interest such as play features, interpretive elements, educational opportunities, or gathering places.

High Priority (1-10 Years)

Criteria used to determine higher priority projects include:

- Determine the alignment for the missing gaps in the Spine Trail.
- Begin acquisition or property agreements needed for the Spine Trail based on the preferred alignment.
- These projects have an associated CIP project once planning is completed.

Medium Priority (11-20 Years)

Criteria used to determine medium priority projects include:

- Connect the gaps in the Spine Trail to provide a multi-modal and accessible connection between all parks. These projects have an associated high priority planning project before it can become a CIP project.
- Provide new amenities and improve on existing amenities at the parks.

Medium Priority (11-20 Years)

Criteria used to determine medium priority projects include:

- Master planning for the Hanscom Property.
- Reevaluate and update the master plan for Farrel McWhirter to reflect current operations needs and improvements made to the property.

Low Priority (20+ Years)

Criteria used to determine lower priority projects include:

- Dependent on an earlier projects to be completed, for example where parking is needed before buildings can be developed for reuse.

2025 Priority Projects: Wayfinding

- Created two new walking routes in 2024:
 - Downtown Parks Tour Loop
 - Education Hill School Tour Loop
- Signage and Wayfinding Subcommittee
 - Formed in conjunction with Signage and Wayfinding Plan
 - Review existing physical and digital materials
 - Provide feedback, suggestions, and ideas for expansion



Trails

- A Sammamish River Trail
- B Redmond Central Connector
- C PSE Powerline Trail

Sammamish River Trail and Redmond Central Connector Loop

Distance: 3 miles
Elevation gain/loss: +39 ft / -37 ft
Difficulty: Easy

This three-mile loop takes you along the scenic Sammamish River passing through natural environments and Downtown Redmond. Eagles, herons, beavers, and salmon are frequently seen from the trail. The trail continues along the PSE Powerline Trail, south of Overlake Christian Church then to the Redmond Central Connector along Willows Road, highlighting public art along the way.

 Luke McRedmond Park  Restrooms in City Hall  Parking at City Hall

 Scan this code to view the GPS map.

 Learn more about Redmond trails redmond.gov/Trails

 Redmond
Parks and Recreation

Notice of nondiscrimination is available at redmond.gov/Trails.
차별금지정책은 redmond.gov/Trails에 있습니다.
If you continue to experience issues, please contact redmond.gov/Trails.

Sammamish River Trail and Redmond Central Connector Loop

Youth Advocate Project



GOAL

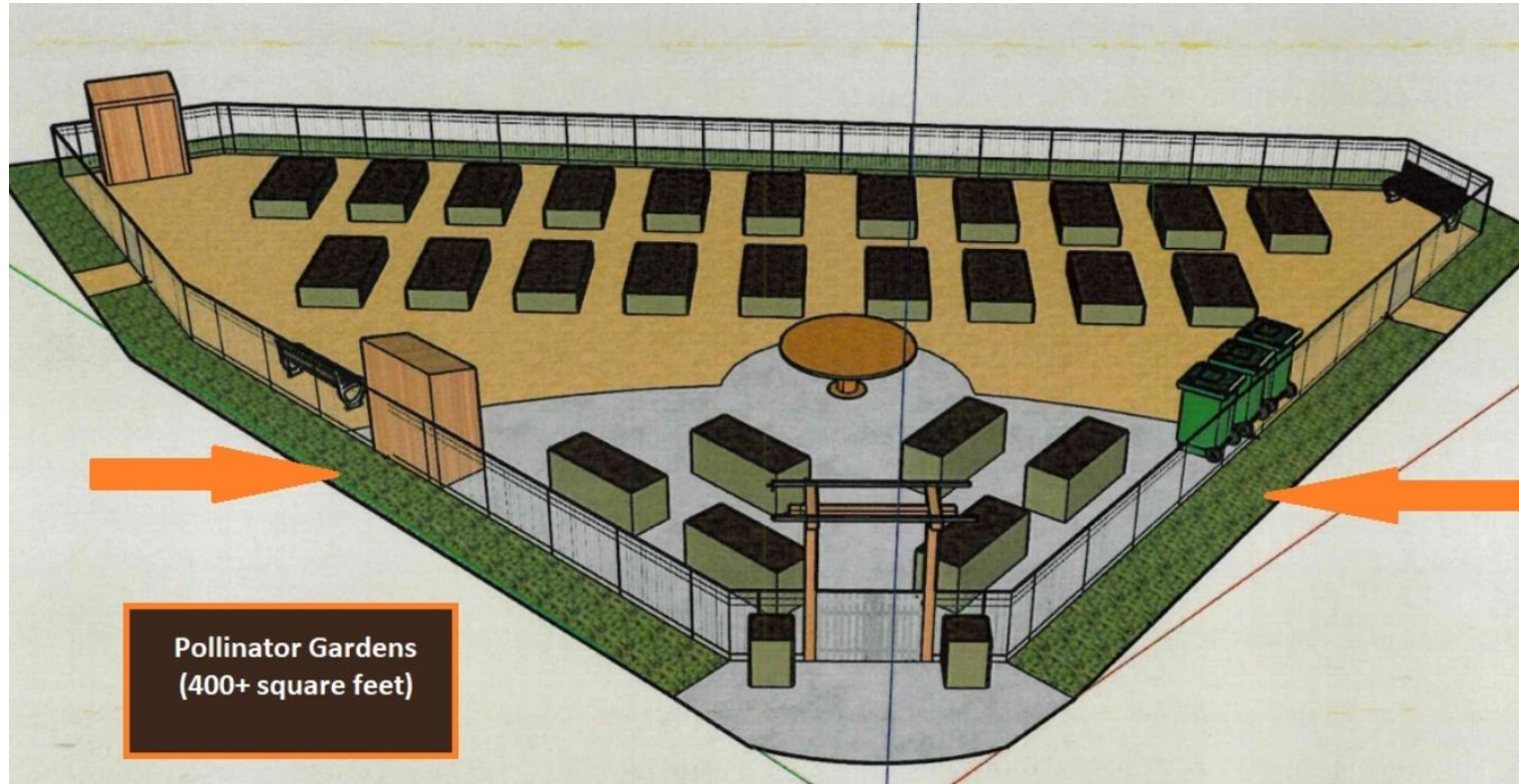
We aim to educate Redmond youth about key environmental issues, fostering awareness and encouraging active community involvement to protect and sustain our local environment.

Topic:

INVASIVE SPECIES

- PTRC partnered with youth advocates to get more applied, real-world experience
- Elementary School Classroom Sessions
 - Examples of local Invasive Species in our local environment
 - Prevention of invasive species spreading
- Partner with Green Redmond-youth volunteer work party

Community Garden Updates



- 26 new community gardens at Anderson Park
- Opened April 2025
- Total of 76 community gardens at Juel and Anderson parks

PTRC 2025 Work Plan

- PTRC adopted the 2025 Work Plan
- Covers Priority Projects outlined today and ongoing initiatives such as Tree Canopy, website improvements, etc.
- Volunteerism
- Serves as a guideline for PTRC efforts in 2025

Parks, Trails, and Recreation Commission – 2025 Work Plan



Information: Provide information and inform Commission on work being done

Consult: Provide information and ask for Commission ideas, possibly making adjustments and decisions according to your feedback.

Input: Collaboration between staff and Commission to come to decision.

Motion: Formal proposal by Commission for council action after group decision-making

2025 Parks, Trails, and Recreation Commission Work Plan

Work Plan Item	Commission Role	Tentative Timeline	Description
2025 Work Plan	Input & Motion	Q1	Approve Commission Workplan for the year
East Redmond Corridor Implementation Plan	Input	Q1	Provide guidance on the development of an implementation strategy for the East Redmond Corridor.
Southeast Redmond Neighborhood Park Design	Input	Q2/ Q3	Review and make comment on schematic designs.
Commission Recruitment & Elections	Input/Motion	March	Open positions starting in April of 2025. Commission assists in recruiting and interviewing as needed.
Volunteerism	Input	Ongoing	Provide input on the Parks and Recreation Department Volunteer program and future opportunities, including the Green Redmond program.
Private Development Agreements	Input	Ongoing	Provide input on private development of any trails, plazas, or public open space. Discussion and recommendation on park master plans by private development.
Strategic Activities	Input	TBD	Acquisition of properties; activating undeveloped parks; trail connections; trash assessment of trails and parks; feasibility of projects, projects with a longer planning time horizon.
Park System Signage & Wayfinding Plan	Input	Q2	Provide input on the development of systemwide signage and wayfinding standards.
Comprehensive Recreation Plan	Input	TBD	Provide input on the development of the comprehensive recreation plan and motion of recommendation to approve for Council
Derby Days & Redmond Lights Planning	Consult	Q1 & Q3	Event activities and logistics
Cultural Arts Plan	Information	TBD	Stay informed about Cultural Arts Plan update
Tree Canopy & Climate Resiliency Vegetation Management Plan	Information	Ongoing	Updates on Climate Resiliency in Sustainability Vegetation Management Plan implementation and tree canopy expansion efforts. 10
Permanent Dog Park Project	Consult	TBD	Staff will update Commission on progress.

Parks, Trails, and Recreation Commission Meetings

- 1st Thursday of the Month
- 6:30 p.m. - 8:30 p.m.
- City Hall

Thank you!



Appendix / Extra Slides

East Redmond Corridor Plan

- HBB consultant completed ERC Implementation (final draft) March 2025
- PTRC reviewed the final draft with HBB at the March 6 Commission meeting
- Timelines include Early Action Projects (1-5 years) through longer-term projects (11-20+ years)
- Target Early Action Projects that can be started or completed with minimal budget, including volunteer activities

Early Action Projects

High Priority (1-5 Years)

1. AJP Phase 1 - Public Access Improvements
2. MP Phase 1- Soft Surface Spine Trail
3. COP Phase 1- Interpretive Trails
4. WPP Phase 1 - Interpretive Elements
5. JP Phase 1 - ADA Access

CIP Projects

High Priority (1-10 Years)

1. SE RP - Park Development - In Progress
2. AJP Phase 2 - East Park Improvements
3. MP Phase 2 - Paved Trails
4. COP Phase 2 - Outdoor Learning & ADA Access
5. FMP Phase 1 - Spine Trail

CIP Projects

Medium Priority (11-20 Years)

6. AJP Phase 3b - SE RP / AJP Spine Trail
7. COP / FMP Phase 1b - COP to Novelty Spine Trail (may take longer)
8. FMP Phase 2 - North Parking & Arena Improvements
9. COP / FMP Phase 1b - NE Redmond Rd & 192nd Ave NE ROW Improvements (may take longer)
10. JP Phase 2 - PSE Spine Trail
11. JP Phase 3 - Park Improvements
12. AJP Phase 4 - West Park Improvements

CIP Projects

Low Priority (20+ Years)

13. WPP Phase 3 - Connector Nature Trails
14. MP Phase 3 - Farmyard
15. WPP Phase 4 - Hanscom Property
16. WPP Phase 5 - Perrigo Connector Trails
17. COP Phase 3 - Buildings
18. WPP Phase 6 - Trails and Canopy Tower
19. AJP Phase 5 - Secondary Creek Crossing

Planning Projects

High Priority (1-10 Years)

1. AJP Phase 3a - SE RP / AJP Spine Trail
2. COP / FMP Phase 1a - COP to Novelty Rd

Medium Priority (11-20 Years)

3. WPP Phase 4 - Hanscom Property Master Plan
4. FMP Phase 4 - Update Park Master Plan