



Redmond City Council Update

July 16, 2024

Plymouth Housing's Mission



To eliminate homelessness and address its causes by preserving, developing and operating safe, quality, supportive housing and by providing adults experiencing homelessness with opportunities to stabilize and improve their lives

Plymouth Housing Background



Nonprofit housing developer
founded in 1980



Operates **17 permanent supportive housing facilities** in King County, including one in Bellevue



Serves **formerly homeless adults**



Believes **everyone deserves a home**

Our Model – Permanent Supportive Housing

"Permanent"

There is no time
limit on our
housing

"Supportive"

We connect our
residents with
services that can
help them thrive

(e.g. case management to
connect residents with Social
Security or veterans' benefits)

"Housing First"

A stable home is
needed before
an individual can
rebuild their life

Our Residents

Plymouth Housing serves adults with acute needs

Of the nearly 1,400 residents housed in 2023:

- **62%** seniors (55+)
- **52%** people of color
- **11%** veterans
- **\$8,500** average annual income

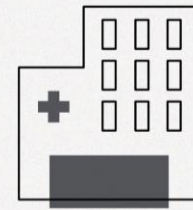


Our Effectiveness

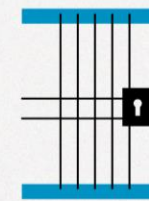
CHRONIC HOMELESSNESS

Results in increased time in the emergency room and jails—which are costly alternatives to housing

A COMPARISON OF COSTS



16 DAYS
IN THE HOSPITAL



10 WEEKS
IN A KING COUNTY JAIL

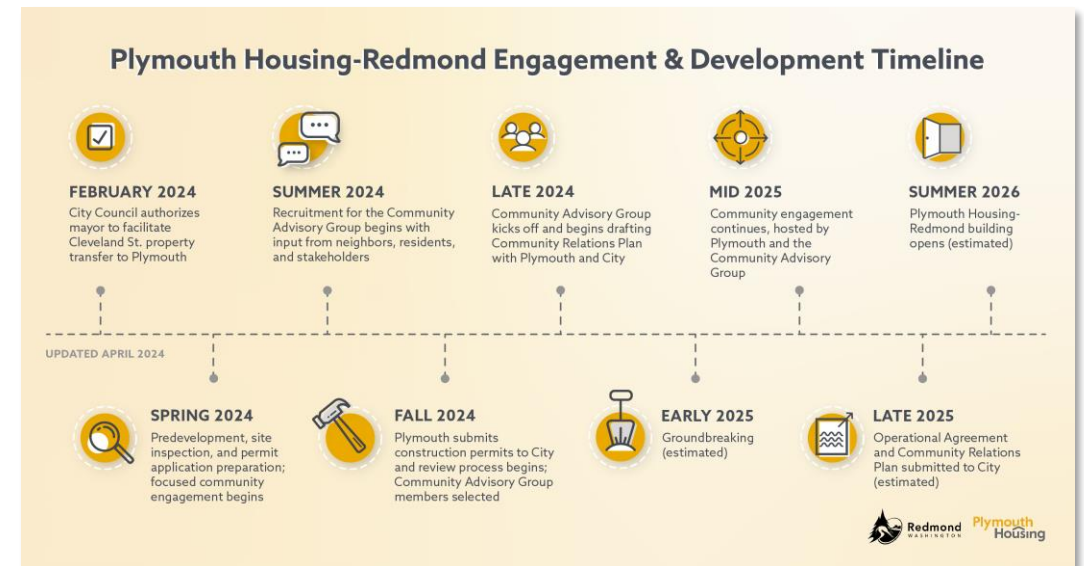


1 YEAR
OF PERMANENT SUPPORTIVE
HOUSING AT PLYMOUTH

Redmond Updates

We hope to share more about:

- 1) Outreach efforts to date
- 2) Plans for the Community Advisory Group
- 3) How to join
- 4) Upcoming opportunities
- 5) Resources



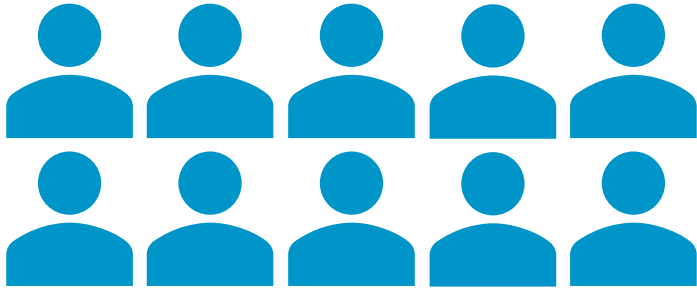
Outreach to Date

Since February

- Canvassed 70+ neighborhood businesses with OneRedmond
- Hosted tours of Plymouth Crossing
- Weekly meetings w/ Redmond staff
- Attended Redmond & Eastside events
- Hosted Neighborhood Business Focus Group
- Tabled at Derby Days



Community Advisory Group: Structure



10 members who collectively represent:

- **Redmond residents**, including immediate neighbors (within approx. 1,000 feet of site)
- **Redmond businesses and workers**, including immediate neighbors
- **Nonprofit(s) providing housing/homelessness services** in Redmond
- **Lived experience** of homelessness or housing insecurity
- **Faith/religious organizations** serving Redmond
- **Redmond schools**, such as parents/guardians, teachers, and other school staff
- **Redmond community associations**



Staff from:

- Plymouth Housing
- Redmond **Parks Department**
- Redmond **Police Department**
- Redmond **Planning & Human Services Department**

Community Advisory Group: Structure

Sample Representation Matrix

Percentages are for demonstration only. Actual representation will vary based on applications received.

	Redmond resident (<1000ft of site)	Redmond resident	Own, work, or conduct business in Redmond (<1000ft of site)	Own, work, or conduct business in Redmond	Nonprofit providing housing or homelessness services in Redmond	Lived experience of homelessness or housing insecurity	Faith/religious org. based in or serving Redmond	Experience with Redmond schools (i.e. parent or guardian, teacher)	Redmond community association leadership (current/former)	Prior experience w/ related housing or homelessness planning and oversight
Annette Benning	✓	✓		✓						
Bradley Cooper		✓	✓	✓				✓	✓	
Carey Mulligan				✓						✓
Cillian Murphy				✓			✓		✓	
Colman Domingo				✓	✓					
Emma Stone		✓				✓				
Jeffrey Wright	✓	✓								
Lily Gladstone			✓	✓						
Paul Giamatti								✓	✓	
Sandra Huller		✓								✓
Total Representation	20%	50%	20%	60%	10%	10%	10%	20%	30%	20%

Community Advisory Group: Initial Work Plan

Five meetings

- In person in Redmond
- 60-90 minutes

First meeting in November/December 2024

Future meetings approx. bi-monthly in 2025

- February
- April
- June
- September

Exact dates, times, and frequency subject to member availability and direction

Member expectations

- Active participation in and outside of meetings
- Commitment to building relationships with Plymouth, Redmond, and CAG members
- Invite and solicit feedback from community to bring to CAG discussions
- Provide or support new engagement opportunities in 2025

Ongoing topics

- Discuss draft Community Relations Plan and any proposed modifications
- Recap community feedback received
- Share engagement opportunities

Community Advisory Group: How to Join

Apply to join at:

PlymouthHousing.org/Redmond

- Applications accepted starting **August 1**
- Last day to submit **September 20**
- Members selected in early **October**
- Members will be selected to ensure CAG is a representative cohort of residents, businesses and workers, nonprofit(s), lived experience of homelessness or housing insecurity, faith/religious organizations, schools and parents/guardians, and community associations
- All applicants who are not selected will automatically receive regular updates on CAG activities

Plymouth-Redmond Community Advisory Group Application

The Community Advisory Group will provide Plymouth Housing with community consultation in the development of the Community Relations Plan for the project located at 16725 Cleveland Street in the City of Redmond. Plymouth Housing will consider a number of factors in the makeup of the Community Advisory Group, including but not limited to the following: Proximity to the project site, local business ownership, membership in local community associations, lived experience, and knowledge of affordable housing.

Important Dates:
August 1, 2024 - Applications accepted
August 13, 2024 - Lunch and Learn: Community Advisory Group and Plymouth Housing Q&A
September 20, 2024 - Last day to submit applications (11:59pm)
October 7, 2024 - Selected members contacted by Plymouth Housing

Questions: RedmondPST1@plymouthhousing.org

Hi, Sarah. When you submit this form, the owner will see your name and email address.

* Required

1. First Name *

Enter your answer

2. Last Name *

Enter your answer

3. Email *

Enter your answer

4. Phone Number *

Enter your answer

5. The Community Advisory Group will be comprised of individuals who have connections to or experience with a broad range of Redmond stakeholders and communities, including but not limited to the local business community, neighborhood and community associations, faith/religious groups, and directly impacted parties.

Check all that apply to you: *
Members will be selected based on the following criteria to ensure the CAG as a whole credibly represents this range of perspectives.

I live in Redmond within <1000ft (approximately half a mile) of 16725 Cleveland St.

I live in Redmond.

I own, work, or conduct business within <1000ft (approximately half a mile) of 16725 Cleveland St.

I own, work, or conduct business in Redmond.

I represent a nonprofit organization that provides housing and/or homelessness services in Redmond.

I have lived experience of homelessness.

I represent a faith/religious organization based in or serving Redmond.

I have experience with Redmond schools (parent, teacher, etc.).

I am/was in a leadership position in a Redmond community association.

I have prior experience with housing and/or homelessness engagement activities similar to this Community Advisory Group.

7. Community Advisory Group meetings will be held in person in Redmond with limited hybrid/virtual options. Meetings will likely last between 60-90 minutes. Time/day of the week will be determined after members are selected.

The first meeting will occur sometime in November or December 2024, and future meetings will take place approximately bimonthly in February, April, June, and September 2025.

Can you commit to attending most/all of these meetings in person? *
Please share any anticipated challenges to your availability or participation. We acknowledge that coordinating schedules can be difficult and we are committed to working around standing conflicts as needed and reasonable.

Enter your answer

8. OPTIONAL: Share 1-2 references we can contact that can speak to your relevant experience. Include their names, how you know them, and their contact information.

Enter your answer

and why you are interested in joining the group.

Enter your answer

Submit

Community Advisory Group: Learning Event

Lunch and Learn Community Advisory Group Information Session

Tuesday, August 13th
12:00pm-1:30pm
Together Center

RSVP:

PlymouthHousing.org/August13



Resources

**Project information, including how to apply
for the Community Advisory Group:**
PlymouthHousing.org/Redmond

RSVP to August 13th CAG Learning Event:
PlymouthHousing.org/August13

Questions:
RedmondPSH@plymouthhousing.org

**Thank
you!**

Plymouth
Housing