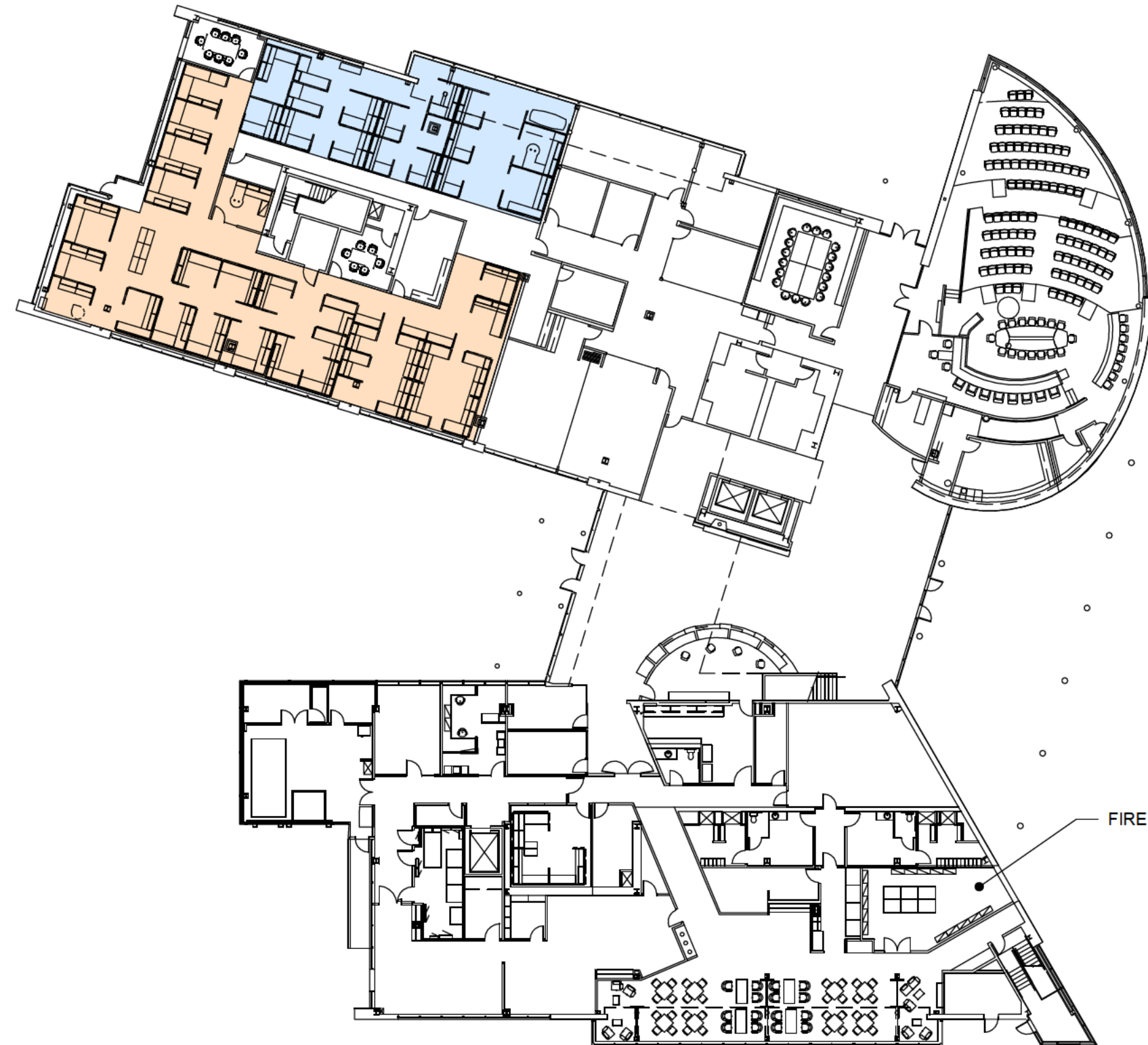


EXISTING 1ST FLOOR PLAN

SCALE: 1" = 30'-0"



WORKSTATIONS AVAILABLE

PLANNING

CUBICLES: 16

OFFICES: 0

PUBLIC WORKS

CUBICLES: 28

OFFICES: 1

LEGEND

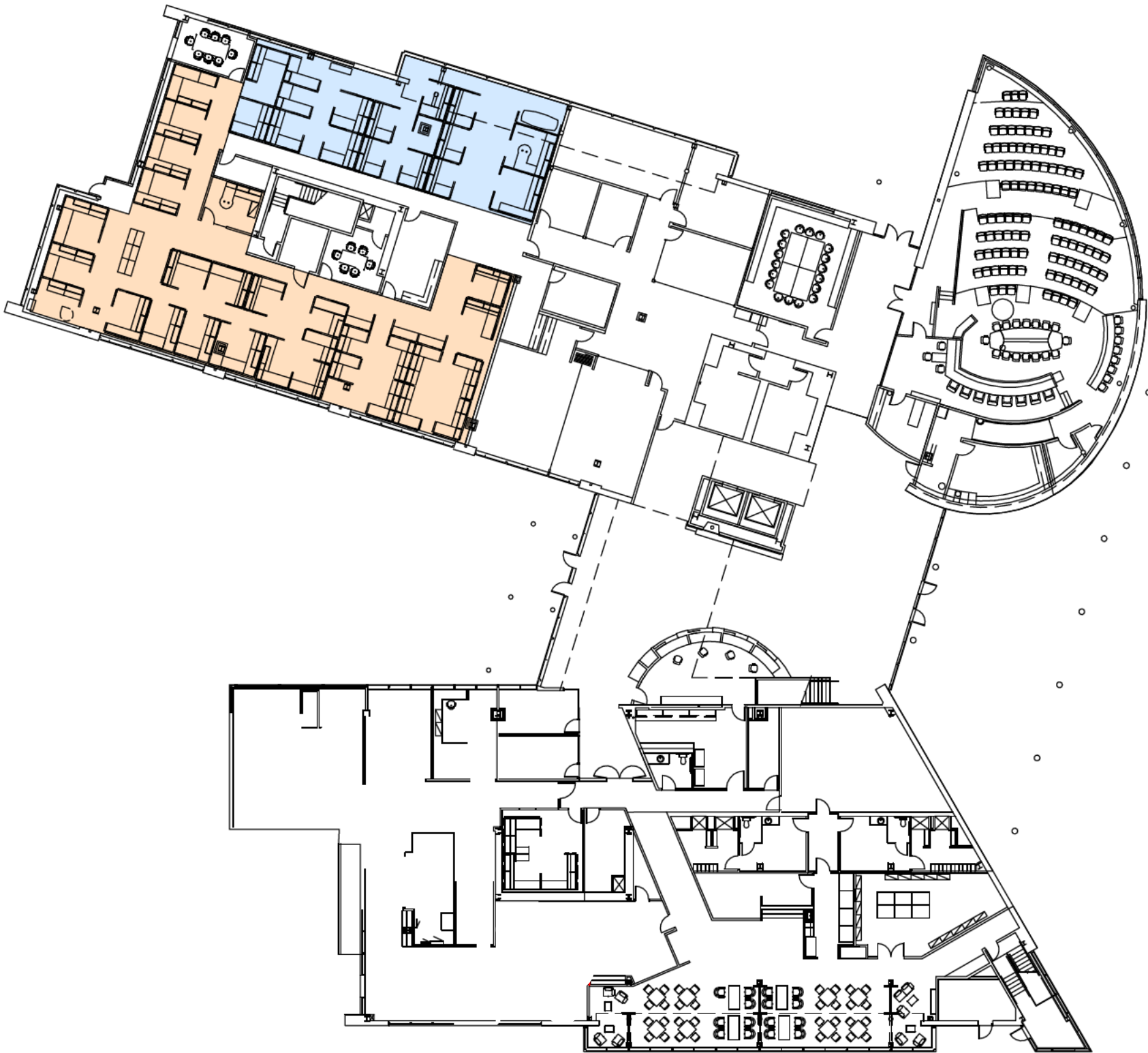


PLANNING



PUBLIC WORKS





WORKSTATIONS AVAILABLE

<u>PLANNING</u>	
CUBICLES:	16
OFFICES:	0
<u>PUBLIC WORKS</u>	
CUBICLES:	28
OFFICES:	1

LEGEND



- PLANNING
- PUBLIC WORKS
- PROPOSED FURNITURE /
CONSTRUCTION CHANGES

EXISTING 2ND FLOOR PLAN

SCALE: 1" = 30'-0"



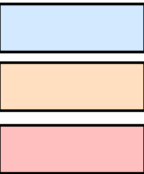
WORKSTATIONS AVAILABLE

PLANNING
CUBICLES: 45
OFFICES: 5

PUBLIC WORKS
CUBICLES: 48
OFFICES: 4

FIRE PREVENTION
CUBICLES: 8
OFFICES: 2

LEGEND



PLANNING

PUBLIC WORKS

FIRE PREVENTION

PROPOSED 2ND FLOOR PLAN

SCALE: 1" = 30'-0"



WORKSTATIONS AVAILABLE

PLANNING
CUBICLES: 53
OFFICES: 7

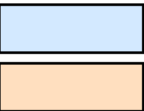
PUBLIC WORKS
CUBICLES: 48
OFFICES: 4

FIRE PREVENTION
MOVED TO 3RD FLOOR

MODIFICATIONS

- FIRE PREVENTION RELOCATED TO THE 3RD FLOOR
- PLANNING TEAM CONSOLIDATED INTO THE PLAN-SOUTH AREA OF THE FLOOR

LEGEND



PLANNING
PUBLIC WORKS

EXISTING 3RD FLOOR PLAN

SCALE: 1" = 30'-0"



CITY CLERKS

WORKSTATIONS AVAILABLE

HUMAN RESOURCES (INCL. PAYROLL)

CUBICLES: 13
OFFICES: 4

FINANCE (INCL. AP)

CUBICLES: 29
OFFICES: 6

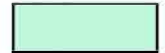



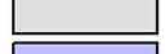

EXECUTIVE (CITY CLERKS)

CUBICLES: 6
OFFICES: 1

TECHNOLOGY AND INTERNET SECURITY (TIS)

CUBICLES: 38
OFFICES: 3

LEGEND

-  HUMAN RESOURCES
-  PAYROLL
-  FINANCE
-  ACCOUNTS PAYABLE (AP)
-  EXECUTIVE
-  TECHNOLOGY & INTERNET SECURITY (TIS)



LEGEND

- HUMAN RESOURCES
- PAYROLL
- FINANCE
- ACCOUNTS PAYABLE (AP)
- EXECUTIVE
- TECHNOLOGY & INTERNET SECURITY (TIS)
- FIRE PREVENTION
- PROPOSED FURNITURE / CONSTRUCTION CHANGES

WORKSTATIONS AVAILABLE

HUMAN RESOURCES (INCL. PAYROLL)
CUBICLES: 17
OFFICES: 4

FINANCE (INCL. AP)
CUBICLES: 27
OFFICES: 6

EXECUTIVE (CITY CLERKS)
MOVED TO 4TH FLOOR. CLERKS FILE ROOM
TO REMAIN

TECHNOLOGY AND INTERNET SECURITY (TIS)
CUBICLES: 39
OFFICES: 3

FIRE PREVENTION
CUBICLES: 19
OFFICES: 2

MODIFICATIONS

- MCREDMOND CONFERENCE ROOM
RELOCATED TO EXPAND HR
DEPARTMENT
- PAYROLL RELOCATED TO HR AREA AND
DOOR TO PAYROLL STORAGE
RELOCATED ALONG HALLWAY
- 7 NEW 8'X8' CUBICLES AND 6 NEW 6'X8'
CUBICLES ADDED IN THE HR AREA
- TIS: EXPANDED INTO PREVIOUS PAYROLL
AREA - FIVE 8'X10' CUBICLES RESERVED
FOR MANAGERS. 5 NEW 6'X8' CUBICLES
ADDED INTO MAIN TIS AREA. 2 NEW 8'X10'
CUBICLES ADDED ALONG THE EXTERIOR
WALL
- MORSE CONVERTED FROM COMPUTER
LAB SET UP TO CONFERENCE ROOM.
ROOM WILL STILL DOUBLE AS THE ECC

EXISTING 4TH FLOOR PLAN

SCALE: 1" = 30'-0"



WORKSTATIONS AVAILABLE

EXECUTIVE (INCL. COMMUNICATIONS)

CUBICLES: 11

OFFICES: 5

PARKS & RECREATION

CUBICLES: 9

OFFICES: 3

PLANNING

CUBICLES: 31

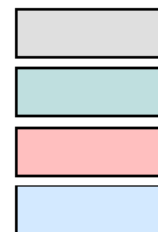
OFFICES: 7

FIRE PREVENTION

CUBICLES: 16

OFFICES: 2

LEGEND



EXECUTIVE

PARKS & RECREATION

FIRE PREVENTION

PLANNING





LEGEND

	EXECUTIVE
	PARKS & RECREATION
	PLANNING

WORKSTATIONS AVAILABLE

EXECUTIVE
CUBICLES: 21
OFFICES: 7

PARKS & RECREATION
CUBICLES: 9
OFFICES: 3

PLANNING
CUBICLES: 37
OFFICES: 7

FIRE PREVENTION
MOVED TO 3RD FLOOR

MODIFICATIONS

- FIRE PREVENTION RELOCATED TO THE 3RD FLOOR
- CITY CLERKS AND COMMUNICATIONS TEAM ADJACENT TO MAYOR'S SUITE
- PLANNING DEPARTMENT CONSOLIDATED INTO THE PLAN-SOUTH AREAS OF THE 2ND AND 4TH FLOORS
- CITY ATTORNEY OFFICE PROVIDED ON THE 1ST FLOOR