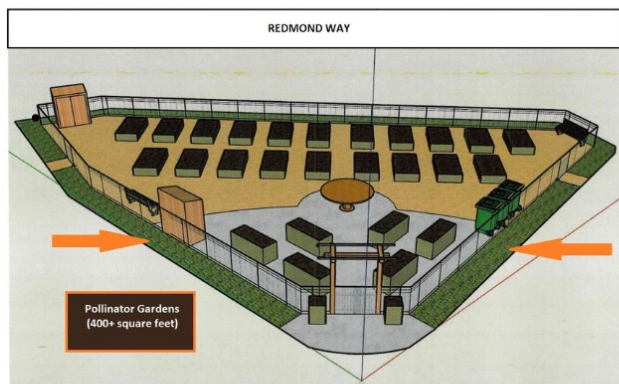


Community Gardens Update

Overview

The Community Garden Expansion project was implemented to meet growing community needs. This initiative was identified in the 2017 and 2022 PARCC Plans, which were prioritized with funding in the 2023-2024 budget. The first expansion came to Juel Park in winter 2023/spring 2024. The second installment is at Anderson Park and will open spring 2025, in time for the growing season.



Features

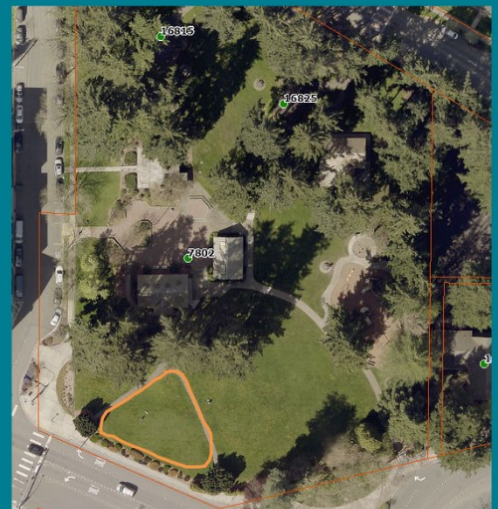
- Serves downtown core
- 400+ square feet of pollinator gardens
- Seed library
- Community Harvest & Gathering Table
- 6 Accessible Raised Beds
- 20 Standard Raised Beds
- 2 Storage Sheds
- Seating



Pollinator Gardens



Juel Community Gardens



Anderson Garden Location