

Joint Meeting: Parks, Trails & Recreation Commission & City Council

June 11, 2024



Redmond
WASHINGTON



Agenda

- Introductions & commission role
- 2024 Activities
- 2025 Priorities & Areas of Focus
- Discussion

Parks, Trails, and Recreation Commission



Garrett Michaud,
Chair



Kristina Wayland, Vice-
Chair



Ella Elman



Stuart Hargreaves



Gary Smith



Jim Kleppe



Greg Laird



Praveen Rachakulla



Clint Smith



Shailja Tyagi, Youth
Advocate



Nolan Setcavage,
Youth Advocate



The role of the Parks, Trails, and Recreation Commission is to make recommendations to the Mayor and Council concerning **the improvement and development of parks, playgrounds, trails, and recreational facilities.**

To **identify future needs** and interests for the PARCC plan and Comprehensive Plan.

To make recommendations regarding **rules, management, and policies** related to parks.

To **involve Redmond citizens** and park users in issues related to parks & recreation.





77% community support

Pop Up Dog Park



SE Redmond Park

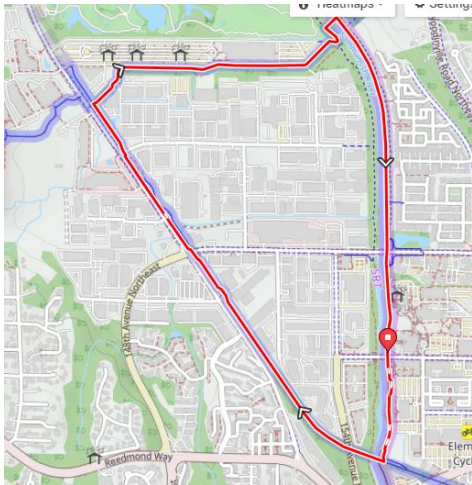


Redmond Senior & Community Center

Accomplishments

- SE Redmond Park Master Plan
- Pop-up Dog Parks
- Community Garden Expansion
- Redmond Senior & Community Center
- Trail Loops
- National Trails Day

2025 Commission Ongoing Efforts: Wayfinding



Turn-by-turn directions to connect to your device

Sammamish River Trail and Redmond Central Connector Loop

Distance: 3 miles
Elevation gain/loss: +39 ft / -37 ft
Difficulty: Easy

This three-mile loop takes you along the scenic Sammamish River passing through natural environments and Downtown Redmond. Eagles, herons, beavers, and salmon are frequently seen from the trail. The trail continues along the PSE Powerline Trail, south of Overlake Christian Church then to the Redmond Central Connector along Willows Road, highlighting public art along the way.

Trails

- A Sammamish River Trail
- B Redmond Central Connector
- C PSE Powerline Trail

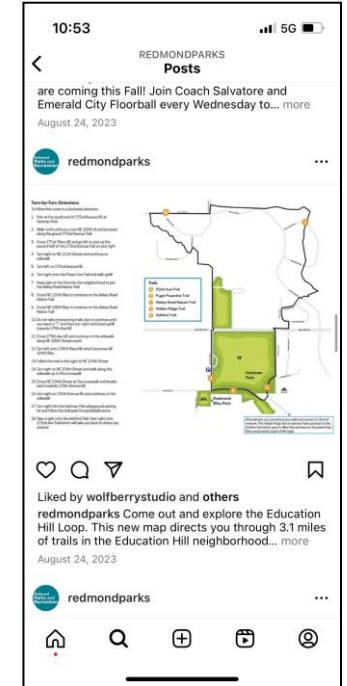
Map Features:

- Overlake Christian Church
- Restrooms and parking at City Hall
- Luke McRedmond Park
- Sammamish River Trail Bridge

QR Codes:

- Scan this code to view the GPS map.
- Learn more about Redmond trails redmond.gov/Trails

Redmond Parks and Recreation



On Instagram and Facebook

Trails

About

Redmond contains 59 miles of public trails, of which 39 miles are owned and operated by the City.

Featured Walks and Routes

- Education Hill Loop Trail** - This 3-mile loop takes you along Hartman Park Trails, Abbey Road Nature Trail, and the Puget Powerline Trail. [Download the .kml map for your smartphone.](#)
- Sammamish River Trail and Redmond Central Connector Trail Loop** - Explore this 3-mile loop bringing you along the Sammamish River Trail, Redmond Central Connector and PSE Powerline Trail. [Download the map to your device.](#)
- Redmond Public Art Walking Map** - Go for a stroll while enjoying some of Redmond's public art.
- Lyrical Currents** - experience the project from Redmond's 2022 Poet Laureate Laura Dai

Sammamish River Trail and Redmond Central Connector Loop

Distance: 3 miles
Elevation gain/loss: +39 ft / -37 ft
Difficulty: Easy

This three-mile loop takes you along the scenic Sammamish River passing through natural environments and Downtown Redmond. Eagles, herons, beavers, and salmon are frequently seen from the trail. The trail continues along the PSE Powerline Trail, south of Overlake Christian Church then to the Redmond Central Connector along Willows Road, highlighting public art along the way.

Featured Trails- webpage

2025 Commission Ongoing Efforts

Volunteerism Continuation

- National Trails Day



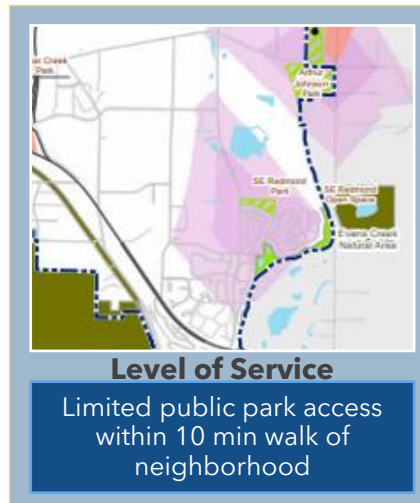
2025 Commission Priorities:

SE Redmond Neighborhood Park

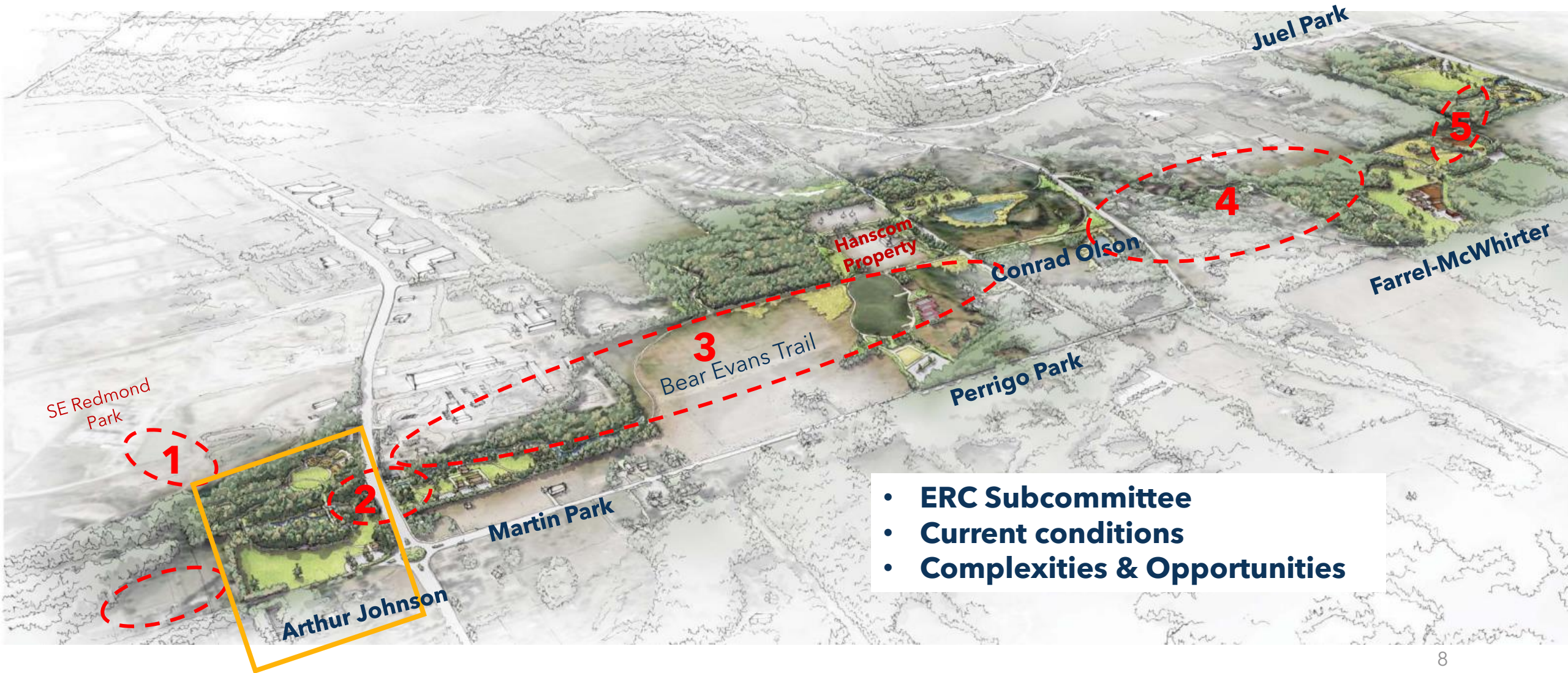
- Master Plan completed and approved by PTRC
- Meets PARCC Plan
 - Expands access for all
 - Builds strong communities
- Next steps: Final Design and Development



- 3.2 acre "blank slate"
- High neighborhood growth
- Enhances Level of Service
- Spaces for all age groups

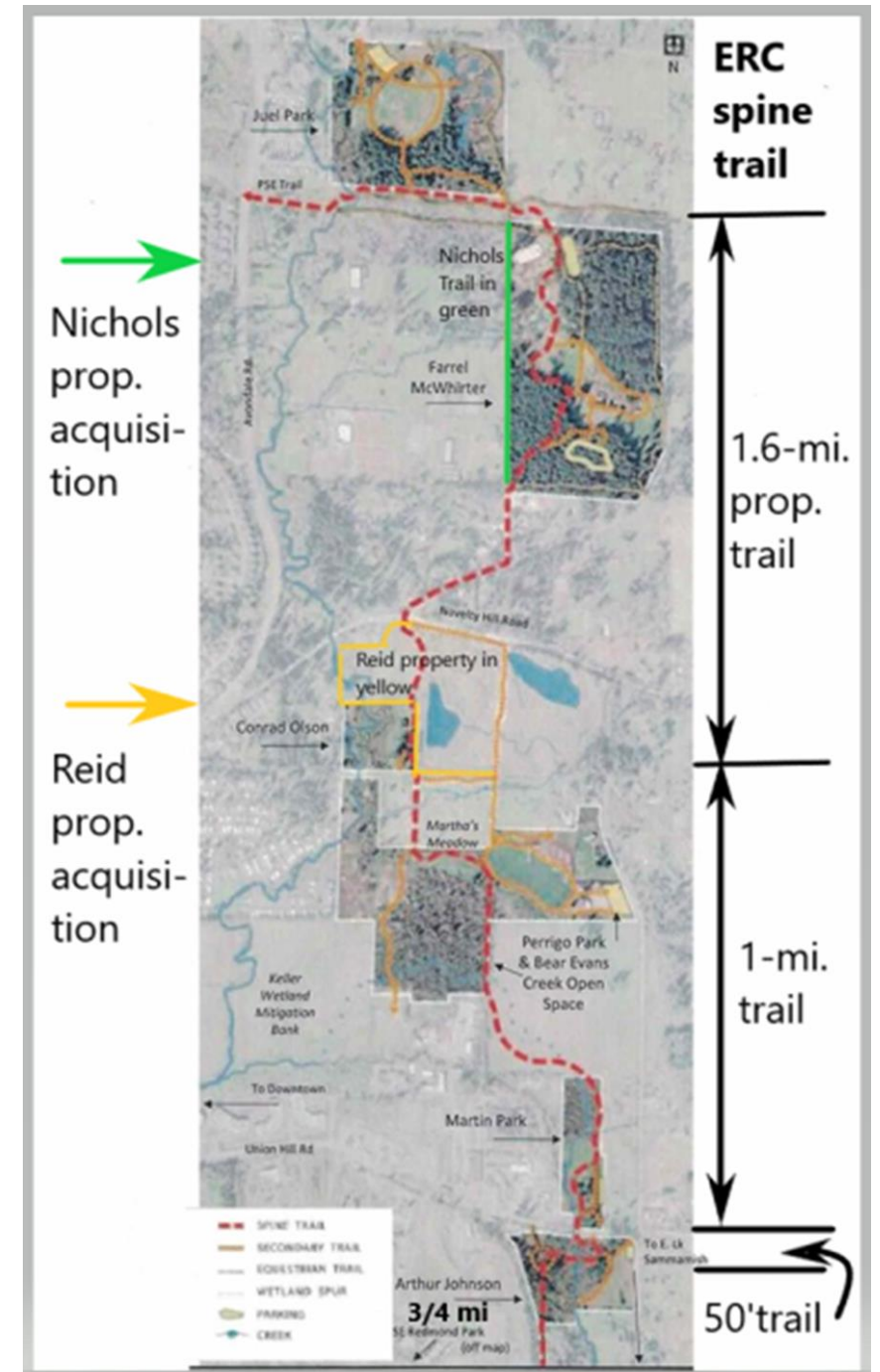


2025 Commission Priorities: East Redmond Corridor (ERC)



2025 Commission Priorities: East Redmond Corridor (ERC)

- **Interim activation**
- **Complete phased approach to activation & improvements**



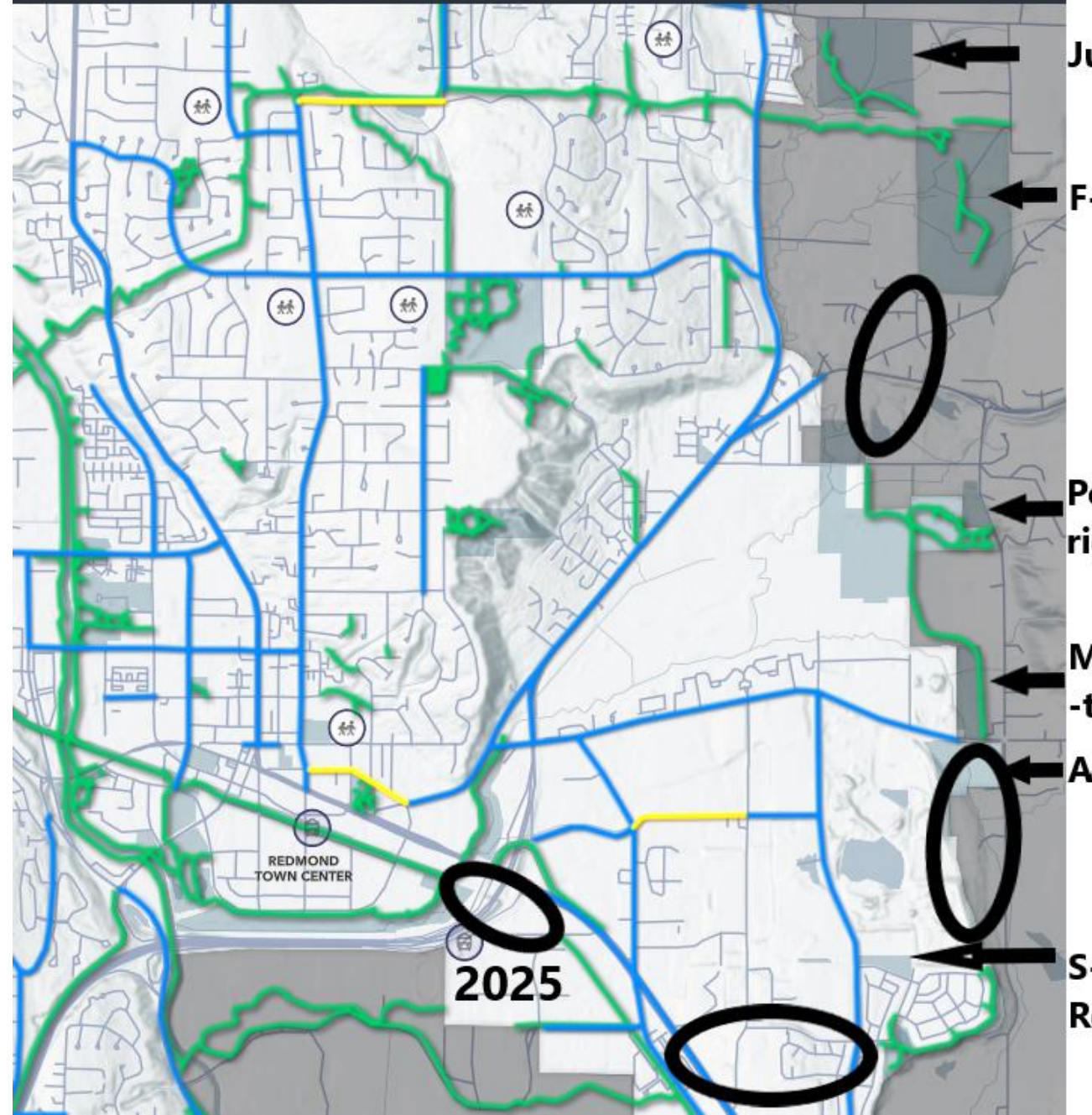
RCC + ERC trails on the Green Ring

- Redmond Central Connector started in 2010.
- The ERC Master Plan started in 2009.
- RCC will be completed in 2025.
- We would like to see ERC re-start in 2025.

Like RCC, ERC's Spine Trail would take 15 years or more. Imagine by 2050, Redmond might have a Green Ring of trails around the entire city.

If you build it, they will come!

City of Redmond Bike Map



Discussion

PARCC Plan Goals:

	Expand Access for All	Build Strong Communities	Innovate for the Future	Environmental Sustainability
East Redmond Corridor interim activation & acquisitions	<i>Acquire missing connections & easements</i>	<i>Partner with County/others for development & access</i>	<i>Activate with interim uses; provide for growing population</i>	<i>Potential tree canopy expansion</i>
SE Redmond Park Design/Development Future design/construction	<i>Current gap in City service area Focus on inclusion in design</i>	<i>Will expand recreation opportunities</i>	<i>High growth area, meet community demand</i>	<i>Incorporate findings of climate resiliency</i>

Other Areas for Discussion: Wayfinding, Volunteerism; Council Priorities

Parks, Trails, and Recreation Commission Meetings

Thank you!

1st Thursday of the Month

6:30-8:30

Council Chambers

