


**Washington State  
Department of Transportation**

<b>Supplemental Agreement Number</b> <u>  5  </u>		Organization and Address	
Original Agreement Number 10034		Perteet, Inc. 2707 Colby Avenue, Suite 900 Everett, WA 98201 Phone: 425.252.7700	
Project Number 2209	Execution Date	Completion Date December 31, 2025	
Project Title NE 70th Street Extension, Redmond Way to 180th Ave NE	New Maximum Amount Payable \$955,318.00		
Description of Work See attached Exhibit A-1, Scope of Services.			

The Local Agency of CITY OF REDMOND  
desires to supplement the agreement entered in to with PERTEET, INC.  
and executed on September 19, 2022 and identified as Agreement No. 10034

All provisions in the basic agreement remain in effect except as expressly modified by this supplement.

The changes to the agreement are described as follows:

**I**

Section 1, SCOPE OF WORK, is hereby changed to read:

See attached Exhibit A-1, Scope of Services.

**II**

Section IV, TIME FOR BEGINNING AND COMPLETION, is amended to change the number of calendar days for completion of the work to read: No Change

**III**

Section V, PAYMENT, shall be amended as follows:

The services described in Exhibit A-1 will cause an increase to the Contract Maximum in the amount of \$111,110.00 for a new Maximum Amount Payable of \$955,318.00. See attached Exhibit D, Consultant Fee Determination Summary.

as set forth in the attached Exhibit A, and by this reference made a part of this supplement.

If you concur with this supplement and agree to the changes as stated above, please sign in the Appropriate spaces below and return to this office for final action.

By: Peter De Boldt, Vice President By: \_\_\_\_\_

\_\_\_\_\_  
Consultant Signature

\_\_\_\_\_  
Approving Authority Signature

\_\_\_\_\_  
Date

City of Redmond NE 70th St. - Redmond Way to 180th Ave.

**Exhibit "A"**  
**Summary of Payments**

	<b>Basic Agreement</b>	<b>Supplement #1 MRR</b>	<b>Supplement #2</b>	<b>Supplement #3</b>	<b>Supplement #4 Time Ext.</b>	<b>Supplement #5</b>	<b>Total</b>
Hourly Salary Cost (includes overhead and fee)	\$ 471,422	\$ 26,809	\$ 40,035	\$ 41,153	\$ -	\$ 88,403	\$ 667,822
Direct Non-Salary Costs	\$ 238,765	\$ 19,000	-	\$ 4,833	\$ -	\$ 12,707	\$ 275,305
Management Reserve	\$ 48,000	\$ (45,809)	-		\$ -	\$ 10,000	\$ 12,191
<b>Total</b>	<b>\$ 758,187</b>	<b>\$ -</b>	<b>\$ 40,035</b>	<b>\$ 45,986</b>	<b>\$ -</b>	<b>\$ 111,110</b>	<b>\$ 955,318</b>

**EXHIBIT A-1**  
**SCOPE OF SERVICES**  
**City of Redmond**  
**NE 70th Street Extension, Redmond Way to 180th Avenue NE**  
**Supplement #5**

**Redmond Way and NE 70th Street Intersection Improvements**

City Project Number: 20012202

## INTRODUCTION

The NE 70th Street Extension project was an effort to construct a new roadway segment along the NE 70th Street alignment between Redmond Way and 180th Avenue NE. The City of Redmond (City) has revised the scope of that project to reduce right-of-way needs by changing the proposed improvements to a new pedestrian and bicycle path along the NE 70th Street alignment. Previously, Perteet (the Consultant) developed a plan and profile for the shared-use path. The City plans to construct a portion of these path improvements in early 2025 with City crews.

This supplement expands design services to finalize construction documents for the Redmond Way and NE 70th Street intersection and complete the illumination system for the shared-use path. The improvements designed under this supplement will be constructed by a contractor selected via public bidding or a roster after the City's construction is complete. This phase of the project will re-use some prior designs from the initial roadway project, specifically at the intersection of SR 202 and NE 70th Street. Design elements for the plans to be developed under this supplement are:

- Illumination along the shared-use path.
- Modifications to the northeast corner of the Redmond Way and NE 70th Street intersection.
- New north crosswalk across Redmond Way, including the pedestrian island within the intersection.

The Consultant assumes that the prior environmental documentation does not need to be revised for this changed design. However, prior stormwater documentation will require revisions to complete this construction phase as an individual project.

All funding for this phase is assumed to be local.

The Consultant's services will be limited to those expressly set forth herein. If the service is not specifically identified herein, it is expressly excluded. The Consultant will have no other obligations, duties, or responsibilities associated with the project except as expressly provided in this Agreement.

Transferring Budget within Contract Maximum: The level of effort is specified in the scope of services. The budget may be transferred between discipline tasks at the discretion of the Consultant, provided that the total contracted amount is not exceeded. The Consultant will have the flexibility to manage budget within a given discipline on a subtask level.

Services provided by the Consultant will consist of:

## GENERAL SCOPE OF SERVICES

This Scope of Services describes the work elements to be accomplished by the Consultant as summarized under each Task. This supplement modifies or adds the following tasks:

Task 1 – Project Management and Coordination	(modified with Supplement No. 5)
Task 5 – Survey and Basemapping (Atlas)	(modified with Supplement No. 5)
Task 10 – Storm Drainage Design	(modified with Supplement No. 5)
Task 15 – Right-of-Way Acquisition	(fee adjustment only)
Task 17 – QA/QC Program	(modified with Supplement No. 5)
Task 18 – Bid Support	(fee adjustment only)
Task 25 – Redmond Way/70th Intersection PS&E	(added with Supplement No. 5)
Task 26 – Redmond Way/70th Intersection Construction Support	(added with Supplement No. 5)

### Optional Services

With prior written approval by the City and written notice-to-proceed, work elements described in this scope of services as optional services may be produced by the Consultant. Future supplements to this agreement may include construction management or design services during construction at the discretion of the City.

This Scope of Services is defined in the tasks below.

## SCOPE OF SERVICES DEFINED

### Task 1 – Project Management and Coordination

#### 1.1 Project Coordination with City

Task 1.1 is supplemented with the following:

The Consultant will attend up to four (4) additional project status meetings via Microsoft Teams, up to one hour long each, for this final shared-use path design portion of the project. Up to two members of the consultant team will attend each meeting. The Consultant will prepare a meeting agenda and meeting notes for each meeting and track action items discussed at the meetings.

#### 1.2 Project Schedule, Budget, and Team Management

Task 1.2 is supplemented with the following:

For the final shared-use path phase of work, the Consultant will develop and maintain a simple milestone schedule for draft and final design. The Consultant will not develop a detailed Microsoft Project Gantt chart-style schedule for this phase. The Consultant will report on the status of deliverables against the milestone dates at each progress reporting period.

The first Assumption for Task 1 is revised as follows:

#### Assumptions:

- The duration of this phase of the project shall be no longer than 40 months (since date of initial contract execution in September 2022).

The Deliverables for Task 1 are supplemented with the following:

**Deliverables:**

- Project meeting agendas for up to four (4) additional meetings and notes/action items

## Task 5 – Survey and Basemapping (Atlas formerly 1 Alliance)

### 5.11 Topographic Field Survey and Basemapping – NW Corner of NE 70th Street and Redmond Way

Task 5.11, added in Supplement No. 3, is revised to read:

#### 5.11.1 Survey PM, Admin, QA/QC

This task includes the survey project management, administrative duties, and quality control required for a project of this complexity and magnitude.

#### 5.11.2 Topographic Field Survey

A topographic survey sufficient for the development of 1-foot contours will be conducted across the new construction from the Sound Transit project recently finished to supplement the existing mapping done previously. Figure 5-1 illustrates the boundary of survey needed by the intersection. Additionally, Atlas will collect any new paved surfaces connecting as a driveway to the Super Rents parcel to the east. The survey will locate features as described below:

- Atlas will use existing Survey Control from the previous phase and set new control as needed to complete this Task.
- Gravity systems, i.e. storm drain and sewer, within the new construction area and how it ties into the previously located structures.
- Sanitary sewer and storm drain structure inverts will be measured to the extent possible without entry into the structure, defined as confined space entry, which Consultant personnel are not certified to perform. Manhole structure diameter, pipe diameters and direction, manhole lid orientation (offset) and pipe material will be noted.
- Sidewalks, curbs (with type noted), driveways and curb ramps will be located as will pavement edges with type of paving noted.
- At curb ramps, spot elevations will be taken at top/bottom of ramp, all grade breaks and grade transitions, and at curb transitions.
- Traffic signs will be located and labeled as to their type; i.e. stop, yield, bike lane, etc.
- Significant trees with a 6" or greater caliper when measured 4.5 feet above natural ground will be located with drip-line noted.
- Signal poles, junction boxes and other new surface features within the below noted limits will be picked up



Figure 5-1. Survey limits for Task 5.11.

### 5.11.3 Survey Basemapping

The existing topographic basemap will be updated with the current data. More specifically:

- Manholes:
  - Inverts will be shown for all pipes into or out of structures detailing pipe diameter and direction of pipe.
  - Manhole labels will also include manhole numbers that correspond to the City GIS ID for the structure with nominal diameter of manhole as measured in the field.
  - Pipe connections shown on the plan will be to center of structure rather than center of access lid.
- All line work will be in model space. Drawing units shall be U.S. decimal feet.
- An electronic copy of the triangulated irregular network (TIN) will be provided.
- APWA CAD standards for layers and symbols will be used.

5.11.4 Survey QA/QC of Deliverables

An internal Consultant quality assurance/quality control review of deliverables will be conducted, as well as confirmation that comments received have been addressed. A record of comments received will be maintained. Response to each comment received will be tracked to confirm that they have been addressed

A new task, Task 5.12, is added as follows:

5.12 Path Mapping

The intent of this task is to map the new finished path built by the City within the project area, see Figure 5-2 for reference.

5.12.1 Survey PM, Admin, QA/QC

This task includes the survey project management, administrative duties, and quality control required for a project of this complexity and magnitude.

5.12.2 Topographic Field Survey

The existing topographic basemap will be updated with the mapping data of the newly built path.

- All line work will be in model space. Drawing units shall be U.S. decimal feet.
- An electronic copy of the triangulated irregular network (TIN) will be provided.
- APWA CAD standards for layers and symbols will be used.

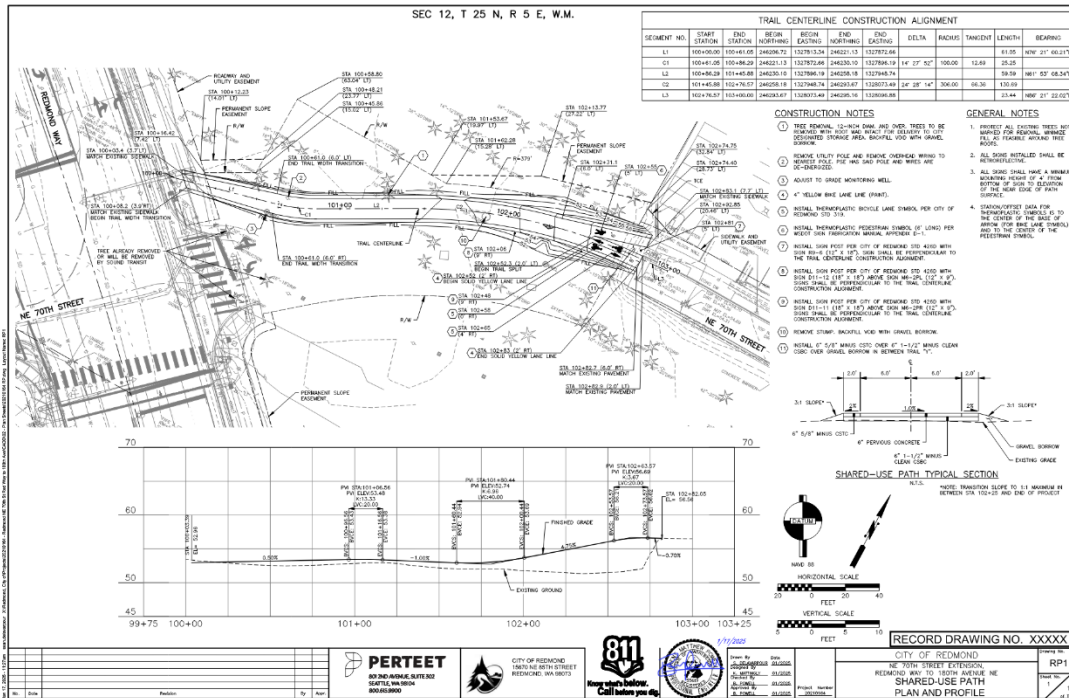


Figure 5-2. Plan sheet for path mapping limits.

The assumptions list for Task 5 is supplemented with the following:

**Assumptions (for Tasks 5.11 and 5.12):**

- Health, Safety, and Security are priority. Atlas personnel will not proceed if the conditions are deemed unhealthy, unsafe, or not secure from harm of any type.
- Atlas is not responsible for any delays due to conditions outside of Atlas's control.
- Atlas is not responsible for any delays or errors caused by others.
- A Record of Survey/setting of property corners is not a part of these services.
- Atlas will not enter any conditions deemed unsafe and will notify the Client to resolve them should they arise.
- The level of effort for this task is limited to the budgeted level of effort.

The deliverables list for Task 5 is supplemented with the following:

**Deliverables (for Tasks 5.11 and 5.12):**

- Field book notes, if required.
- ASCII file of all topographic and control points, if required.
- An ASCII file with point numbers, coordinates, elevations, and descriptions for each survey point, with benchmarks and survey control points clearly identified (comma delimited).
- Updated Basemap containing both the new sidewalk area as noted in Task 5.11 and Figure 5-1 as well as the new path built as noted in Task 5.12 and Figure 5-2.

## Task 10 – Storm Drainage Design

Task 10.10 is added as follows:

### 10.10 Remond Way/70th Stormwater Report

The Consultant will prepare a stormwater report for the plans developed in Task 25 in compliance with the City's 2022 Stormwater Technical Notebook. This report is required because the project site has over 35% existing hard surface coverage and includes more than 2,000 square feet of new plus replaced hard surfaces with this improvement. The Consultant will use the prior stormwater report completed for the full NE 70th Street Extension roadway project as a basis for the documentation and will revise the document to cover only this phase's set of improvements.

The Consultant assumes that the off-site analysis from the prior phase of the project does not require any updates for this new phase of the project. The Consultant assumes no flow control or water quality facilities required for the project.

The Consultant will prepare a draft version and then address any comments provided by City reviewers. A maximum of one round of City comments is assumed for this Task. After addressing City review comments, a licensed professional engineer with the Consultant within Washington State will stamp and sign the document.



**Deliverables:**

- Draft stormwater report for the Redmond Way/70th intersection improvements.
- Final stormwater report for the Redmond Way/70th intersection improvements, stamped and signed.

**Task 17 – QA/QC Program**

The deliverables list in Task 17 is supplemented as follows:

**Deliverables:**

- Markups of major submittal quality control reviews submitted electronically with each major submittal. One (1) quality control review document will be submitted for each of the following:
  - Project Basemap
  - 30% Preliminary Engineering Submittal (Plans and Opinion of Cost Estimate)
  - Draft Stormwater Report
  - Final Stormwater Report
  - 60% Final Engineering Submittal (Plans and Opinion of Cost Estimate)
  - 90% Final Engineering Submittal (Plans, Project Manual, and Opinion of Cost Estimate)
  - Draft Redmond Way/70th stormwater report (Task 10.10)
  - Final Redmond Way/70th stormwater report (Task 10.10)
  - Draft PS&E for intersection improvements and shared-use path illumination (Tasks 25.1–25.3)
  - Final PS&E for intersection improvements and shared-use path illumination (Tasks 25.5–25.7)

A new task, Task 25, is added as follows:

**Task 25 – Redmond Way/70<sup>th</sup> Intersection PS&E**

The Consultant will prepare a draft and final set of plans, specifications, and estimates (PS&E) for the improvements to the intersection of Redmond Way and NE 70th Street, including improvements to install illumination along the shared-use path connecting to 180th avenue NE. Where possible, the Consultant will re-use materials developed during the prior phase of the project instead of starting from scratch.

**25.1 Design Options and Confirmation**

The Consultant will evaluate different design options and prepare conceptual exhibits to illustrate the following items. The City will use these exhibits to provide direction to the Consultant on the items to include in the draft PS&E (see Task 25.2).

- **Illumination light levels for the shared-use path.** The Consultant will model pedestrian-scale light poles and fixtures and determine the necessary spacing for installations along the path to comply with City light level standards. The Consultant will illustrate the outputs from AGi32 modeling on a single exhibit for review by the City.
- **Improvements at the Redmond Way/NE 70th Street intersection.** This project will retain the agreed-to channelization layout approved by WSDOT for the reconfiguration of the Redmond Way and NE 70th Street intersection. However, the Consultant will evaluate options to connect bicyclists on

the eastern leg of NE 70th Street to the shared-use path, including evaluations for bicycle signal phasing of bicyclists headed eastbound across Redmond Way. The Consultant will present up to three options for the design of this intersection.

## 25.2 Engineering and Draft Plans

The plans will be prepared to a level of competency presently maintained by practicing professionals in the field of transportation engineering in the Puget Sound Region.

The Consultant will prepare anticipated plans for the final construction documents to a full level of detail for the draft submittal. Table S4-1 lists the anticipated sheets by discipline for this project. Plan sheets will generally be scaled at 1 inch equals 40 feet when printed at full size, with the full construction limits shown on a single plan sheet.

**Table S4-1. Anticipated Plan Sheets for the Redmond Way/70th PS&E.**

Anticipated Sheet(s)	Anticipated Sheet Count
Cover/index	1
Legend and abbreviations	1
Construction alignment and survey control plan	1
Site preparation and TESC plan	1
Paving and grading plan (including any needed drainage improvements)	1
Intersection plan and details (including section views)	3
Channelization and signing plan	2
Illumination plan and details	3
Traffic signal plan and details	4
Traffic control plan	5
Detour plan	1
<b>Total</b>	<b>23</b>

## 25.3 Draft Specifications

The Consultant will update the specifications (project manual) document developed during the prior design phase to reflect the new project scope for intersection improvements and shared-use path illumination, remove special provisions that were included only due to the federal funding that is no longer relevant to this project, and to modify the document to be consistent with the 2025 APWA/WSDOT standard specifications.

The Consultant will make all edits to the prior document using tracked changes in Microsoft Word so that the City can easily view the modified content.

The Consultant will update the front-end documents of the project manual with an updated bid form and with revised information reflecting the modified scope of the project.

## 25.4 Draft Opinion of Cost

The Consultant will prepare and submit to the City an opinion of cost based on the draft plans developed in Task 25.2. The opinion of cost will be based on unit prices and incorporate a 10% contingency to account for the level of completeness of plan preparation at this draft stage and to reflect past experience on similar projects within the region.

In providing opinions of probable construction cost, the City understands that the Consultant has no control over the cost or availability of labor, equipment, or materials, or over market conditions or the Contractor's method of pricing, and that the Consultant's opinions of probable construction costs are made on the basis of the Consultant's professional judgment and experience. The Consultant makes no warranty, express or implied, that the bids or the negotiated cost of the work will not vary from the Consultant's opinion of probable construction cost.

### **25.5 Comment Responses and Resolution**

City staff will consolidate all comments for the draft Redmond Way/70th PS&E into one package for response by the Consultant. The Consultant will prepare a proposed response to each comment received and then conduct one (1) meeting with City staff to reconcile any outstanding comments. The Consultant shall track all resolution and incorporation of each comment in a comment log.

### **25.6 Final Engineering and Plans**

The Consultant will prepare anticipated plans for the final construction documents to a final (construction-ready) level of detail. The Consultant anticipates that the final design will include all sheets for the final construction document package to be used by the contractor (see sheet list in Table S4-1).

The Consultant will complete the following new tasks to develop the sheets listed above:

- General: incorporate comments from the Draft review and comment resolution.
- General: designate all sheets as construction-ready through signatures by each engineer of record.

### **25.7 Final Specifications**

The Consultant will revise the Draft Project Manual based on comments received from the City to produce a Final (construction-ready) Project Manual. The Consultant's engineer of record shall sign the construction-ready Project Manual.

### **25.8 Final Opinion of Cost**

The Consultant will prepare an opinion of construction cost for the Final (construction-ready) shared-use path plans. The opinion of cost will be based on unit prices and incorporate contingencies to account for the final (construction-ready) level of completeness, and to reflect past experience on similar projects within the region.

In providing opinions of probable construction cost, the City understands that the Consultant has no control over the cost or availability of labor, equipment, or materials, or over market conditions or the Contractor's method of pricing, and that the Consultant's opinions of probable construction costs are made on the basis of the Consultant's professional judgment and experience. The Consultant makes no warranty, express or implied, that the bids or the negotiated cost of the work will not vary from the

Consultant's opinion of probable construction cost.

**Deliverables (for all Task 25 subtasks):**

- Design exhibits:
  - Illumination light levels (one sheet)
  - Redmond Way and NE 70th Street intersection (up to three sheets)
- Draft plans submitted in PDF format
- Draft specifications (with tracked changes) submitted in Microsoft Word format
- Draft opinion of cost submitted in PDF and Microsoft Excel formats
- Final plans submitted in PDF format, stamped and signed
- Final specifications submitted in PDF format, stamped and signed, and in Microsoft Word format (with tracked changes)
- Final opinion of cost submitted in PDF and Microsoft Excel formats

A new task, Task 26, is added as follows:

## Task 26 – Redmond Way/70th Intersection Construction Support

The Consultant will support the construction effort for the contract documents developed in Task 25. The Consultant will complete the additional tasks, if requested by the City, during the construction period.

- Attend pre-construction meeting (two Consultant staff to participate, assumed to be at Redmond City Hall)
- Attend up to six weekly construction meetings, up to 1-hour-long each (two Consultant staff to participate, three meetings are assumed to be virtual, and three meetings are assumed to be at Redmond City Hall)
- Review up to eight material submittals
- Respond to up to four requests for information (RFI)
- Develop up to three minor changes/change orders with updated contract documents
- Attend final inspection and provide punchlist comments (two Consultant staff to participate)
- Prepare record drawings per the City's CIP Record Drawing Requirements based on Contractor and City as-built notes (record drawings will capture the construction of the Task 25 design items as well as the City's construction of the shared-use path itself)

**Assumptions:**

- As the exact nature of Construction Support is unknown, the effort is limited to the budget identified for this task. If additional support is required, a supplemental budget will be prepared.

**Deliverables:**

- Material submittal responses (up to eight)
- RFI responses (up to four)
- Updated contract documents reflecting change orders/minor changes (up to three sets of changes)
- Punchlist comments
- For record drawings:

- Composite DWG file of as-built construction elements
- Completed digital submittal checklist
- Full-size record drawing plan set (PDF format)

**Exhibit D**

**Consultant Fee Determination Summary**

2707 Colby Avenue, Suite 900, Everett, WA 98201 P 425-252-7700 F 425-339-6018

Project: NE 70th Street Extension - Supp. No. 5

Client: City of Redmond

Consultant: Perteet

Perteet Project No. 20210164.0000

Date: March 10, 2025

**HOURLY COSTS**

<u>Classification</u>	<u>Hours</u>	<u>Rate</u>	<u>Amount</u>
Principal	18	\$441.50	\$7,947
Senior Associate	79	\$271.57	\$21,454
Engineer III	127	\$164.88	\$20,940
Civil Designer II	104	\$130.13	\$13,533
Lead Tech/ Designer	104	\$149.53	\$15,551
Clerical	12	\$122.05	\$1,465
Accountant	4	\$190.75	\$763
Lead Engineer/ Manager	36	\$187.51	\$6,751
<b>Labor Total</b>	<b>484</b>		<b>\$88,404</b>

**REIMBURSABLES**

<u>Expenses</u>	<u>Cost</u>	<u>Markup</u>	<u>Amount</u>
Mileage	\$349	1.0	\$349
<b>Total Expenses</b>			<b>\$349</b>

**SUBCONSULTANTS**

<u>Subconsultants</u>	<u>Amount</u>
1 Alliance Geomatics (Atlas)	\$9,803
Commonstreet	\$2,554
<b>Total Subconsultants</b>	<b>\$12,357</b>

**OTHER**

Management Reserve	\$10,000
<b>Total Other Costs</b>	<b>\$10,000</b>

<b>CONTRACT TOTAL</b>	<b>\$111,110</b>
-----------------------	------------------

Rates shown reflect the typical compensation rate of employees assigned to the billing category listed. Each category may have multiple employees assigned to that billing category and each employee may have a different hourly rate of pay. Employee compensation is subject to adjustment in June of each calendar year.