

Adaptive Signal Control Projects Status Update

July 16, 2024

Public Works Department

Paul Cho, Traffic Operations and Safety Engineering Manager

Hidemi Tsuru, Traffic Operations Engineer



Agenda



- Share information on adaptive signal control technology and other traffic management tools
- Provide progress update on the Downtown and Overlake Adaptive Signal projects

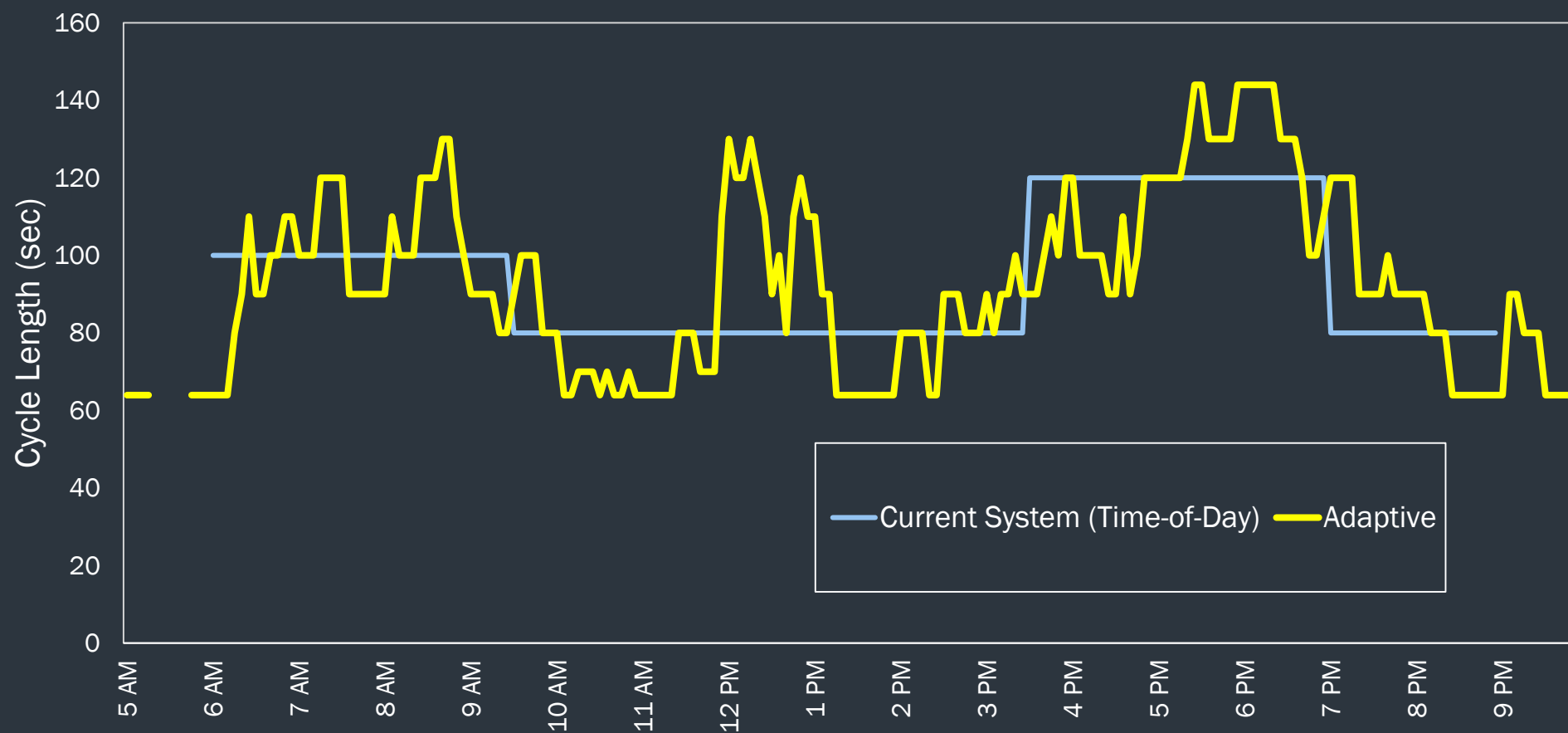
Background

- Downtown Adaptive Signal Control Project
- Overlake Adaptive Signal Control Project

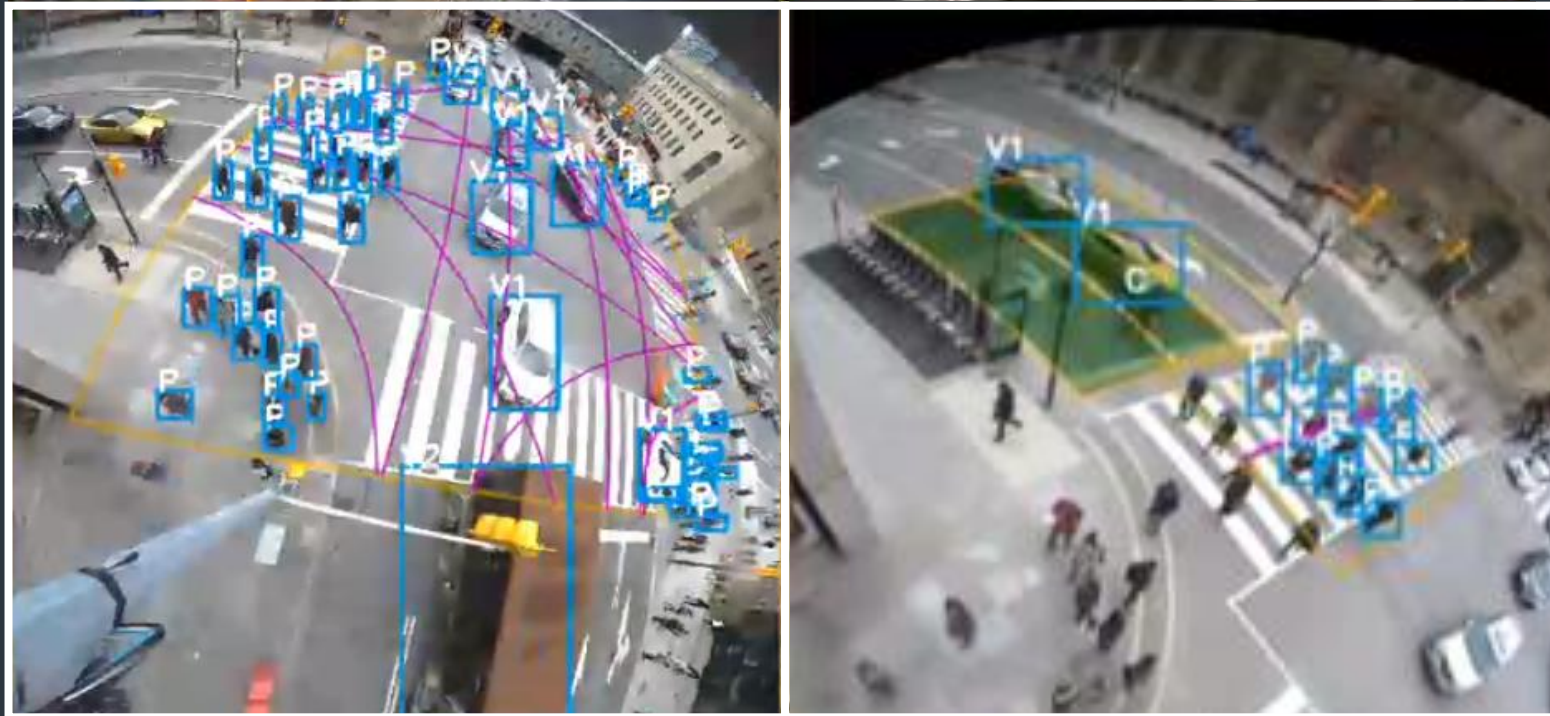




Traditional vs Adaptive Signal Timing



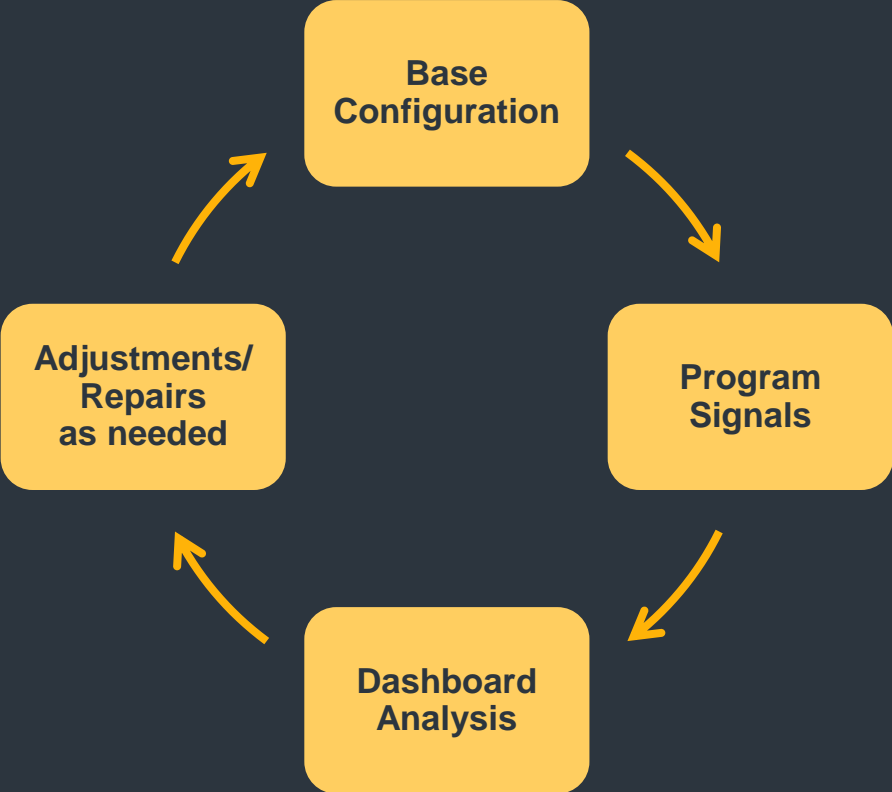
Multi-Modal Detection



Source: Miovision Technologies, Inc.



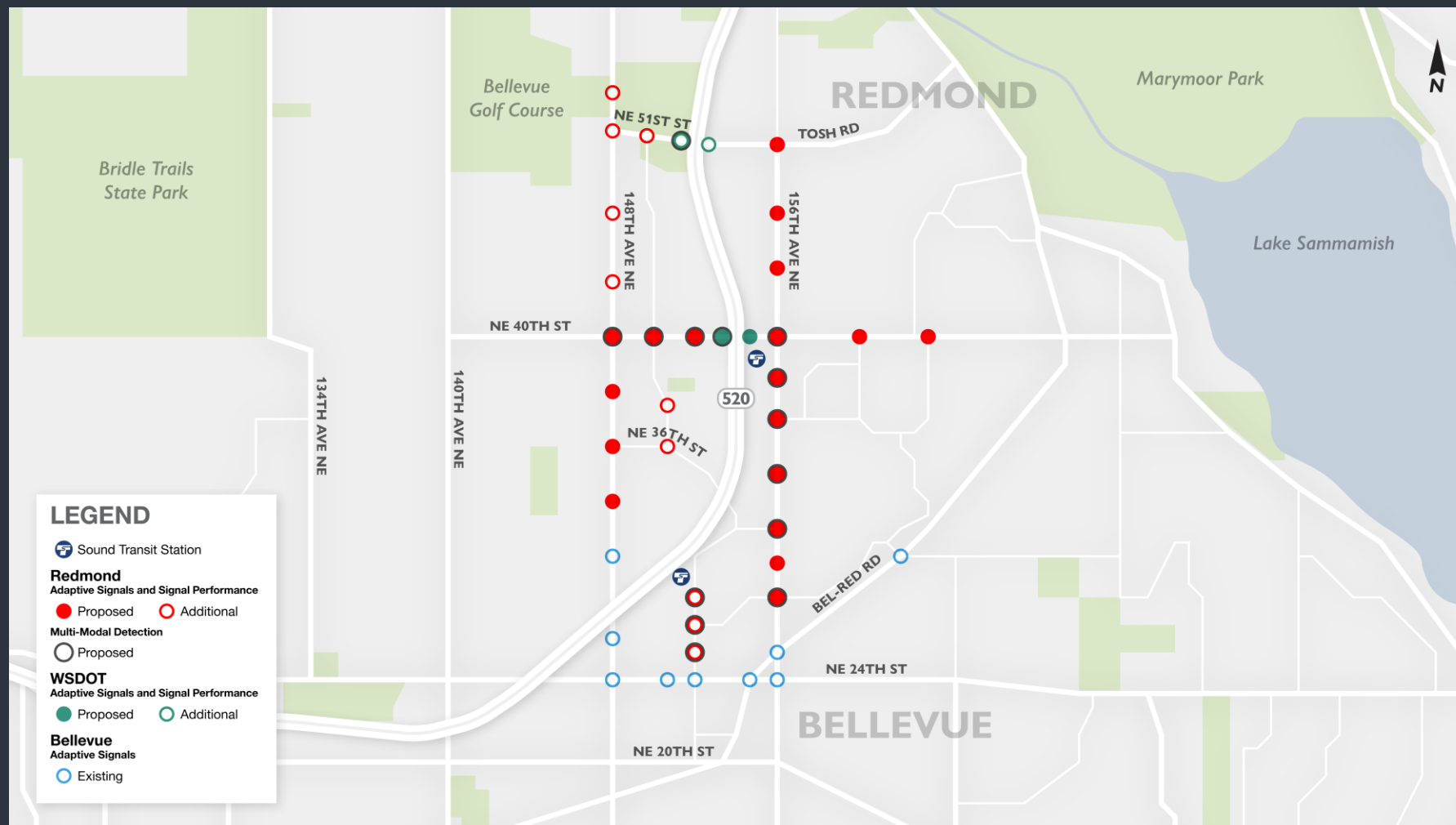
Signal Performance Dashboard



Downtown Adaptive Signals Project Map



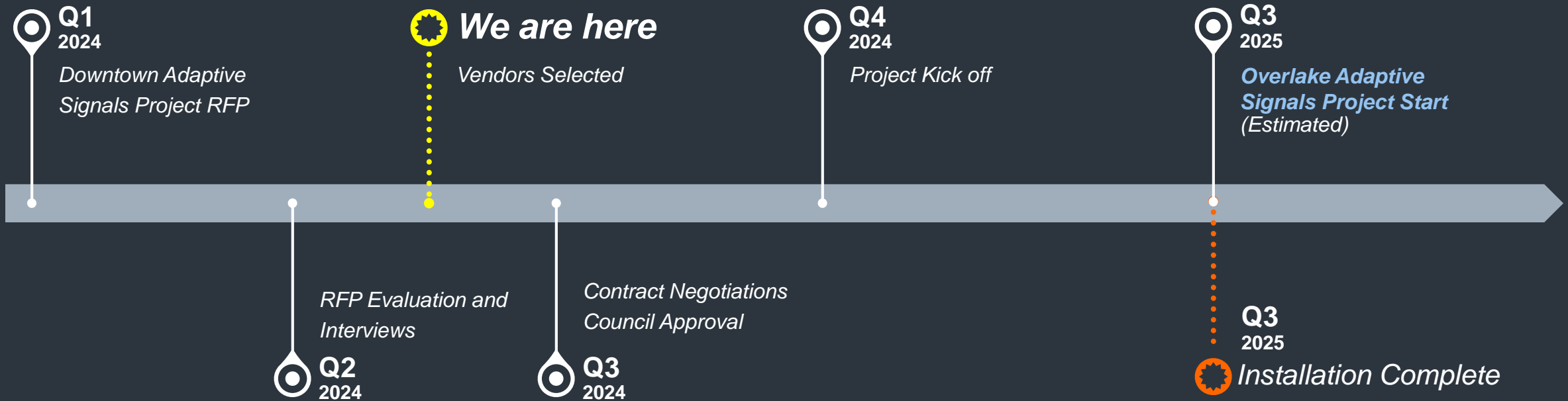
Overlake Adaptive Signals Project Map



Project Progress Update



Downtown and Overlake Adaptive Signals projects





Thank You

Any Questions?

Paul Cho, pcho@redmond.gov

Hidemi Tsuru, htsuru@redmond.gov

