

# Sound Transit Light Rail in Redmond

---

December 7, 2021

Don Cairns, P.E., Transportation Planning and Engineering  
Manager



# Purpose



- Eastlink and Downtown Redmond Link Extension Construction Progress

# Project Overview

- 2006 – Environmental review began from Seattle to Downtown Redmond
- 2016 – Overlake construction began
- 2020 – Downtown construction began
- 2022 – Overlake civil construction ends
- 2023 – Overlake stations open
- 2024 – Downtown extension opens



# Eastlink Train Testing Started

.....



Train being  
pushed east of  
Downtown  
Bellevue Station



# Overlake Village Station Bridge Ramp and Stairs

.....

Night view from  
152<sup>nd</sup> Ave. NE



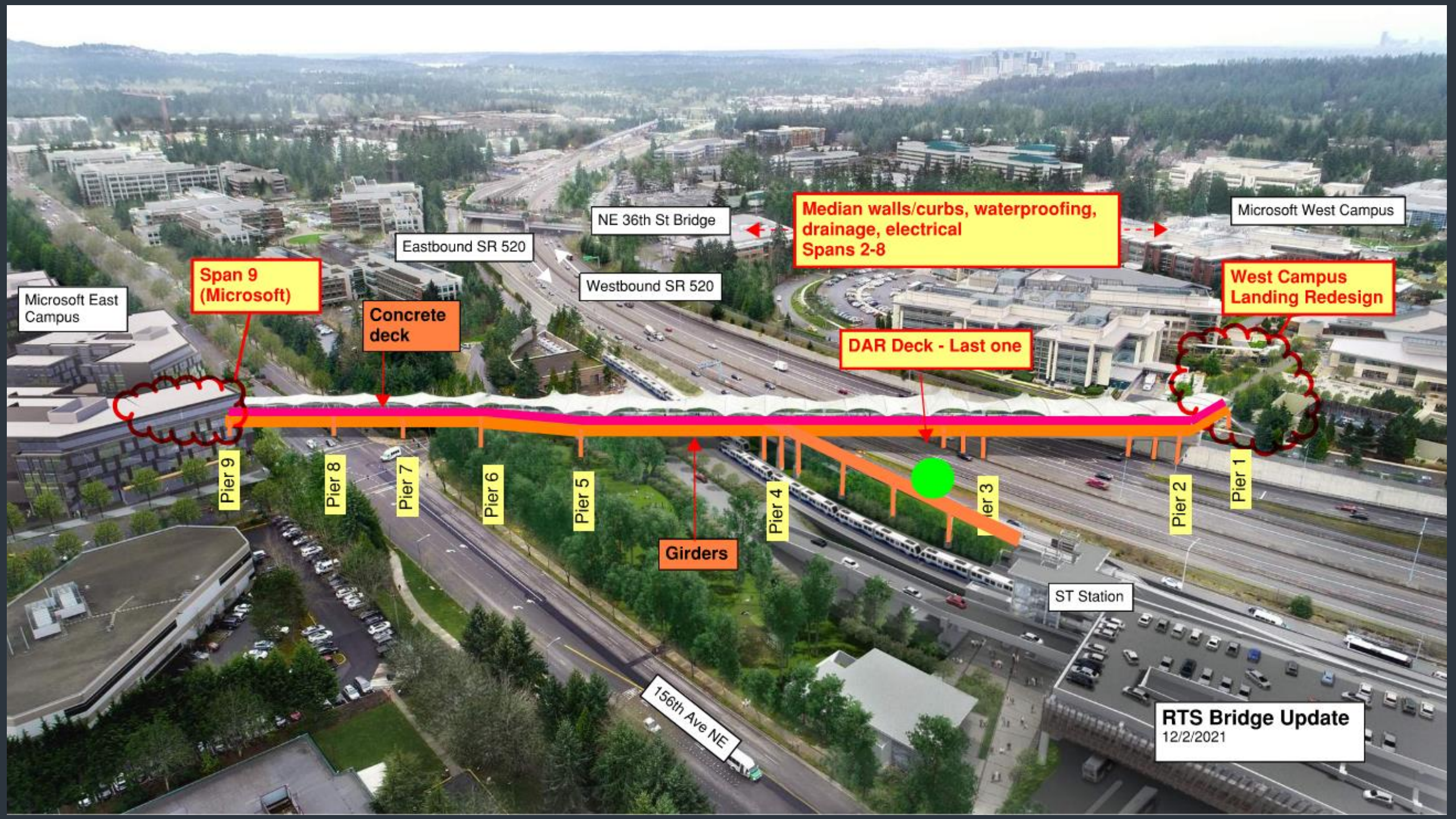
# Redmond Technology Station Garage Reconstruction

---



First level of  
garage under  
construction





Microsoft East Campus

Span 9  
(Microsoft)

Concrete  
deck

Eastbound SR 520

NE 36th St Bridge

Westbound SR 520

Median walls/curbs, waterproofing,  
drainage, electrical  
Spans 2-8

Microsoft West Campus

West Campus  
Landing Redesign

DAR Deck - Last one

Pier 9

Pier 8

Pier 7

Pier 6

Pier 5

Pier 4

Pier 3

Pier 2

Pier 1

Girders

ST Station

156th Ave NE

RTS Bridge Update  
12/2/2021



# SR 520 Track Walls

---

Track walls along SR 520 between  
NE 51<sup>st</sup> St. and NE 40th St.





# Aerial Guideway at West Lake Sammamish Parkway and SR 520

.....

Setting first girders  
in November



# Eastbound SR 520 Off-Ramp

.....



Ramp construction  
and tunnel for light  
rail



# Downtown Redmond Link Extension Bear Creek

---



Bear Creek temporary erosion control is modified to respond to heavy rains in the fall

# Downtown Station Area

.....



Elevated guideway east of  
166<sup>th</sup> Ave. NE



# Upcoming Construction for Downtown Redmond Link Extension



- **Winter 2021**

- Continue girder construction at Westlake Sammamish Parkway and SR 520 interchange
- Continue girder construction in Downtown
- Complete south portion of NE 51<sup>st</sup> St.

- **Winter/Spring 2022**

- February – Start noise wall construction along SR 520
- February – Close the westbound SR 520 on-ramp at SR 202 (Redmond Way) for four months
- May – complete and re-open westbound SR 520 ramp and shift traffic to completed eastbound SR 520 ramp



# Thank You

---

Any questions?

