

NPDES 101:

Redmond Municipal (NPDES) Stormwater Permit

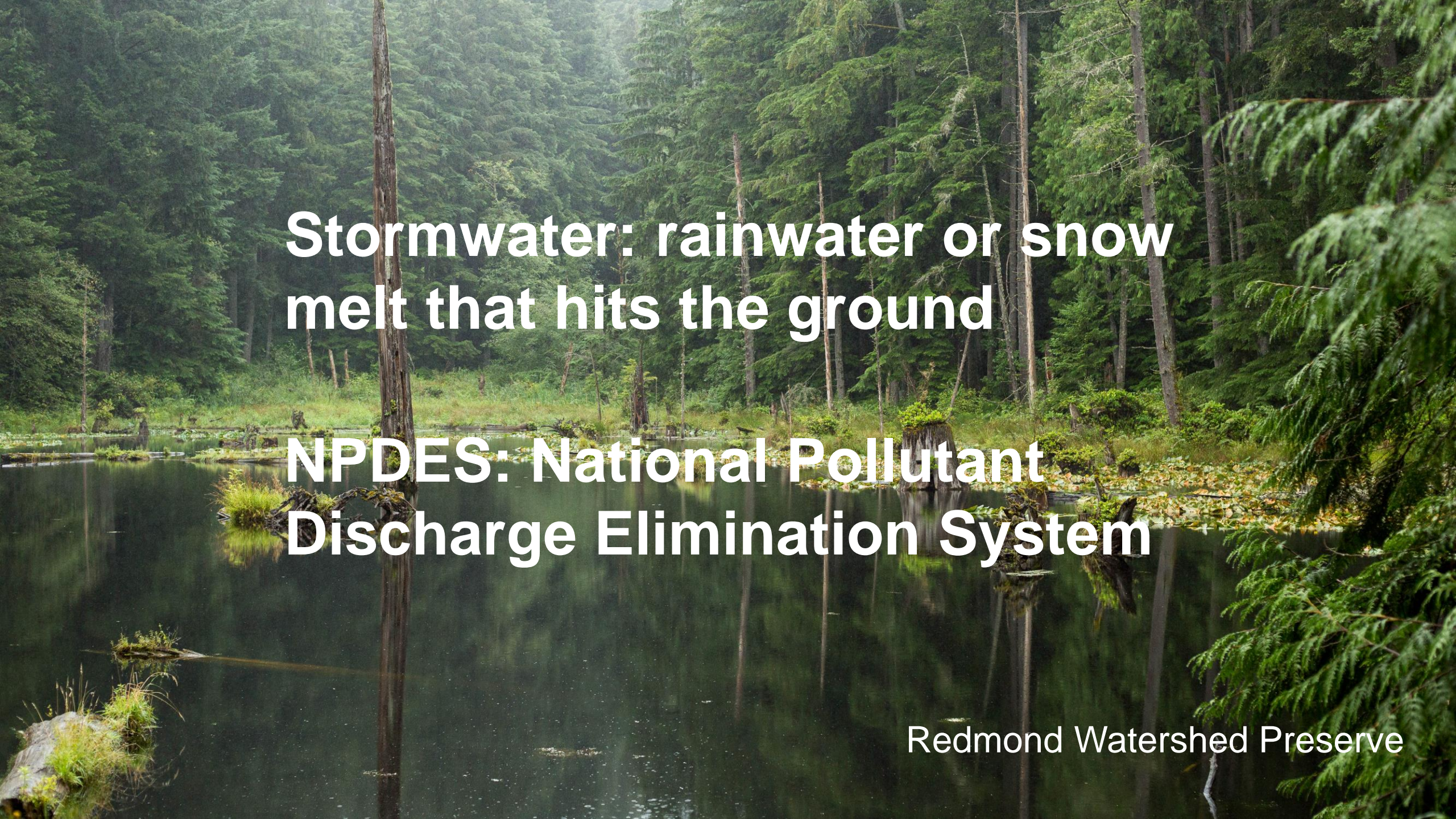
October 8, 2024





Presentation Overview

- Overview of Redmond's 2024-29 Municipal Stormwater (aka NPDES) Permit
- New Permit Requirements (2024-29)
- Focus on Stormwater Operations
- Related Stormwater Programs
- Look ahead



**Stormwater: rainwater or snow
melt that hits the ground**

**NPDES: National Pollutant
Discharge Elimination System**

Redmond Watershed Preserve

NPDES Permit Authority

Federal Clean Water Act: USEPA



NPDES Phase II Municipal Stormwater Permit
(Western WA): Department of Ecology



Stormwater Management Program (**SWMP**):
Redmond

Permit's Guiding Principle

Protect water quality coming out of MS4* by managing what enters the MS4

*MS4=municipal separate storm sewer system aka the *public* stormwater system

Core Permit Requirements

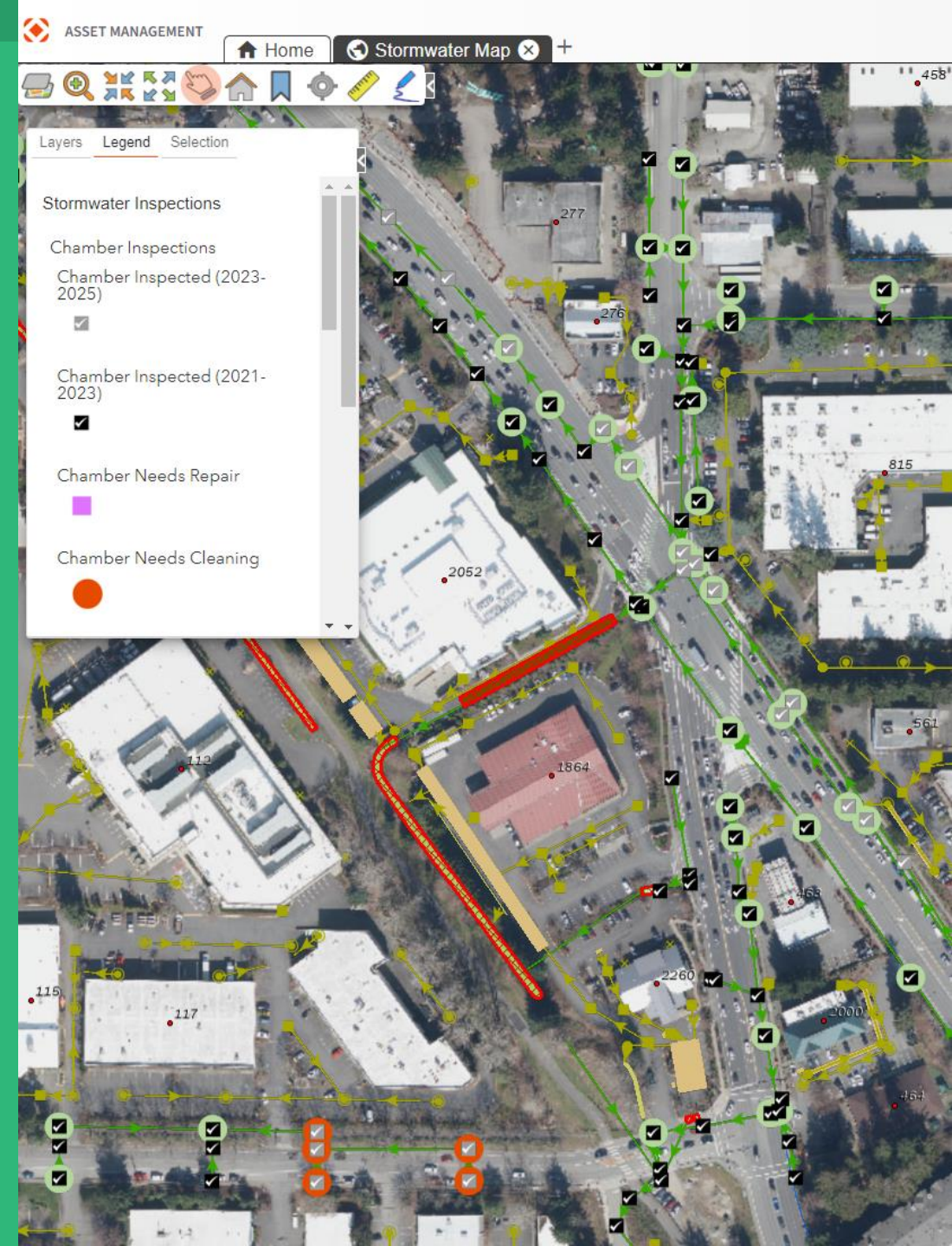
Permit Element	Key Departments
Program Administration, incl Reporting & Notification	PW, Finance
Stormwater Planning	PW, Planning
Public Education & Outreach	PW, Executive
Public Involvement	PW, Executive
Mapping	PW, TIS
Illicit Discharge Detection and Elimination (IDDE)	PW (Fire, Police)
Construction/Post-Construction Runoff Controls	Planning, PW
Source Control (Business Inspections)	PW
Operations and Maintenance	PW, Parks
Stormwater Management for Existing Development	PW, Finance

Notable New Permit Requirements

1. Track, report permit implementation costs
2. “Overburdened Community” engagement
3. Tree canopy protection/restoration targets
4. Additional GIS analyses
5. Stormwater facility retrofit planning, funding, implementation
6. Street sweeping in “priority areas”
7. Management of PCB waste materials (demolition, building maintenance)

Deep Dive on Operations

- Compliance requires adhering to specific inspection schedules and conditions that require maintenance.
 - 11,000 catch basins inspected every 2 years
 - ~600 facilities inspection annually
- Asset and inspection data is tracked in work management software, Lucity.
- Maintenance and repair work are driven by inspection findings and must be completed by an established deadline.



Operations Driven by the Permit

Operations Labor Hours



■ Permit Compliance ■ Other Work

80% of stormwater operations work is related to permit compliance.

Since 2019:

- 33,071 catch basin inspections
- 7,892 catch basins cleaned and repaired
- 3,018 Facility Inspections
- 272 Facility repairs/maintained
- 920 spill/incident responses

6,000+ tons of material removed

🦆 20+ baby ducks rescued from storm drains!



Related Stormwater Programs

- Redmond Paired Watershed Study
- Street Sweeping Effectiveness Study
- Surface Water Monitoring Program
- Stormwater and Surface Water System Plan
- Watershed Planning
- PPA (Pollution Prevention Assistance)



CLOSE THE LID CIERRE LA TAPA



Less Smell



Fewer Pests



No Rain Inside



Looking Ahead

- RPWS and Street Sweeping Study Results
- High School Creek Watershed Restoration Plan
- “Close the Lid” Dumpster Campaign: Phase II
- Code, Stormwater Technical Notebook updates
- Stormwater and Surface Water System Plan



Thank You

Any Questions?

