

(Cover)

City of Redmond Public Art Plan Art, Placemaking, and the Public Realm 2026–2032

(Redmond, WA Logo)

Acknowledgements

This Public Art Plan was made possible through the leadership, guidance, and participation of elected officials, City staff, commissioners, and community members who contributed their time, ideas, and expertise throughout the process.

Mayor

Mayor Angela Birney

City Council

Melissa Stuart, Council President, Position #4

Angie Nuevacamina, Council Vice President, Position #7

Sayna Parsi, Councilmember, Position #1

Vivek Prakriya, Councilmember, Position #2

Jessica Forsythe, Councilmember, Position #3

Vanessa Kritzer, Councilmember, Position #5

Menka Soni, Councilmember, Position #6

Arts and Culture Commission

Pamela Waters, Chair
Michael Heavener, Vice Chair
Kathy Okeefe
Dr. Neelam Chahlia
Cari Scotkin
Anna Zanella
Victoriya Leyfman-Frenkel
Dr. Joyce Paul
Rik Deskin

City of Redmond Parks and Recreation Staff

Loreen Hamilton, Director of Parks and Recreation
Zach Houvener, Deputy Parks Director
Chris Weber, Cultural Arts Supervisor
Hannah Coleman, Cultural Arts Coordinator
Brittany Pratt, Recreation Business Manager
Susana Mojica, Recreation Program Coordinator
Lindsey Falkenburg, Parks Planning Manager
Kevin Sehner, Parks Maintenance & Operations Supervisor

Steering Committee

Chris Weber, Cultural Arts Supervisor
Hannah Coleman, Cultural Arts Coordinator
Brittany Pratt, Recreation Business Manager
Zach Houvener, Deputy Parks Director
Lindsey Falkenburg, Parks Planning Manager
Kevin Sehner, Parks Maintenance & Operations Supervisor
Susana Mojica, Recreation Program Coordinator
Hidemi Tsuru, Senior Engineer
Kim Dietz, Principal Planner
Glenn Coil, Senior Planner
Brant DeLarme, Communications and Marketing Project Administrator
Cari Scotkin, Arts and Culture Commissioner

Community and Civic Interview Participants

Mike Marchand, Chief Information Officer
Becky Frey, Principal Planner
Kim Dietz, Principal Planner

DRAFT

Phillippa Marsh, Economic Development Manager
Nicole Beerman, Department Administrative Coordinator
Kathy O'Keefe, Arts and Culture Commissioner
Michael Heavener, Arts and Culture Commissioner
Anna Zanella, Arts and Culture Commissioner
Pamela Waters, Arts and Culture Commissioner
Arya Nair, Youth Advocate
Viktoriya Leyfman-Frenkel, Arts and Culture Commissioner
Cari Scotkin, Arts and Culture Commissioner and Volunteer
Ana Mora, Artist
Lars Myren, Executive Director, Columbia Choirs
John Oftebro, President, Redmond Historical Society Representative
Sue Heale, Director and Founder, Seattle Community Theater Representative
Mariana C. Martinez, Executive Director, Centro Cultural Mexicano
Mark Chenovick, Managing Artistic Director, SecondStory Repertory
Bob Roberts, Co-Founder, Wonderbelly Games
Cassandra Dracott, CEO & Creative Director of Ironwood Studios
Pearl Leung, Senior Manager, Public Policy, Amazon
Jessica Kravits, Founder and Board President, VALA
Redmond Youth Partnership Advisory Committee
Parks, Trails, and Recreation Commission
Redmond Senior Advisory Committee

Community Questionnaire and Event Participants

The City also thanks the many residents, artists, and community members who contributed through the questionnaire, Derby Days, Downtown Redmond Art Walk, and other engagement opportunities. Their input helped shape the vision and recommendations for public art in Redmond.

Creative Economy Forum Participants

We extend appreciation to creative professionals, cultural organizations, and community partners who participated in the Creative Economy Forum and shared insights on strengthening Redmond's arts and culture ecosystem.

Consulting Team

MIG in partnership with CPG.

Table of Contents

Executive Summary

What Is the Arts Plan?

Where We Are Now

Community Priorities

Where We Are Going

 Framework Goal 1: Citywide Public Art

 Framework Goal 2: Arts Ecosystem

 Framework Goal 3: City Systems

Future Planning

Appendices

 Appendix A - Community Engagement Summary

 Appendix B - Roles and Responsibilities Matrix

 Appendix C - Public Art Collection Inventory

 Appendix D - Public Art Project Matrix (Proposed)

 Appendix E - Public Art Acquisition Policy

 Appendix F - Collection Management and Deaccessioning Policy

 Appendix G - Maintenance and Conservation Guidelines

 Appendix H - Private Development Public Art Process

 Appendix I - Developer Public Art Toolkit Outline

Executive Summary

Redmond is experiencing rapid growth. New development, infrastructure investment, and a growing population are reshaping how people experience the city. The Redmond Public Art Plan guides how public art evolves alongside this growth.

Redmond's public art program has grown into a creative, community-oriented effort integrated into parks and public spaces. This next phase focuses on expanding where art lives and strengthening the program for long-term success.

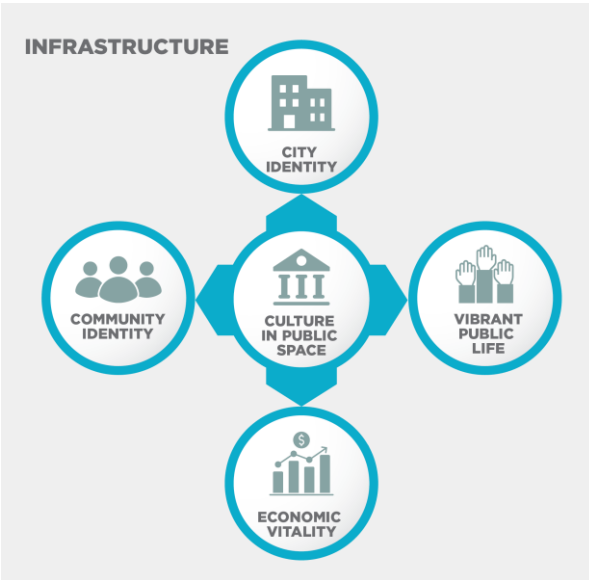
The Plan aligns with the City's adopted Parks, Arts, Recreation, Culture, and Conservation (PARCC) framework, using parks, trails, and civic investments as the primary network for public art. It takes a broad view of public art, including permanent and temporary works, integrated design, performances, cultural programming, and artist-led activities that enhance the public realm.

Public art is how Redmond builds belonging, identity, and vitality into the places people use every day.

Community and stakeholder input revealed six core priorities that shape this Plan:

1. Art that reflects cultural diversity and lived experience
2. Art in everyday and high-impact locations that becomes part of daily life
3. Art that creates opportunities for gathering, performance, and interaction
4. Supporting local artists and creative talent
5. Expanding access to public art opportunities
6. Simplifying how artists and communities engage with the program

Together, these priorities position public art as civic infrastructure that strengthens identity, belonging, and quality of place.



Culture as Infrastructure

These insights change the role of public art in Redmond. Art is no longer seen as an added feature; it is regarded as civic infrastructure that enhances identity, belonging, and quality of place. Implementation is supported through integration with capital projects, alignment with parks and open space investments, and partnerships with private development.

Caption: Culture in public space functions as civic infrastructure, strengthening city identity, reflecting community identity, supporting vibrant public life, and contributing to economic vitality.

The Plan is organized around three framework goals that guide implementation and future growth:



Framework Goal 1: Citywide Public Art

Integrate public art into streets, trails, parks, bridges, and civic projects so it becomes part of how the city is built and experienced daily. Priority is placed on highly visible locations, neighborhood gathering spaces, and infrastructure projects where art can enhance everyday experiences.



Framework Goal 2: Arts Ecosystem

Support artists by strengthening the resources available to them through a coordinated system that offers access to opportunities, training, and clear pathways at all career stages. The Plan supports a connected ecosystem that includes temporary projects, commissions, artist training, partnerships, and community-based opportunities. These efforts expand access for local and regional artists while building a sustainable pipeline into public art opportunities.



Framework Goal 3: City Systems

Establish a long-term foundation through clear governance, stable funding, and streamlined processes that facilitate consistent delivery and stronger outcomes. Implementation focuses on aligning funding, staffing, partnerships, and project delivery practices to support program growth over time.

Together, these goals create a connected system that links artists, communities, infrastructure, and cultural programming. The outcome is a program that is more visible, accessible, and deeply integrated into the life of the city. This Plan provides strategic direction, implementation priorities, and supporting actions to achieve that vision.

“As Redmond grows, arts and culture will help define who we are. By integrating creativity into our public spaces, infrastructure, and daily experiences, we can shape a city that reflects our values, celebrates our diversity, and invites people to engage.” Mayor Angela Birney

What Is the Arts Plan?

The Redmond Public Art Plan is the City’s roadmap for how public art is planned, funded, delivered, and sustained over time. It provides a clear framework to guide decision-making and ensure that public art is consistently integrated into community life.

The plan is organized around three framework goals that define how the program will grow and operate:

- Citywide Public Art
- Arts Ecosystem
- City Systems

Together, these goals guide where public art is located, how artists are supported, and how the City builds the systems needed to sustain the program over time.

Within this structure, public art in Redmond includes permanent works, temporary installations, cultural programming, and art integrated into parks, streets, trails, and civic spaces. The program is supported by coordinated approaches to funding, governance, project delivery, and long-term stewardship.

This framework is used by City staff, the Redmond Arts and Culture Commission (RACC), City Council, artists, and development partners to guide project planning, resource allocation, and program implementation.

The sections that follow describe Redmond’s community context, existing conditions, future direction, and the actions needed to implement the Plan.

Where We Are Now

Redmond’s public art program is guided by a comprehensive set of adopted plans and investments that shape how the city grows and how public spaces are experienced.

The PARCC Plan establishes parks, trails, and public spaces as cultural infrastructure, positioning them as central to community life and everyday cultural experience. Within this framework, public art plays a key role in expressing identity, supporting storytelling, and creating shared experiences across the city.



Caption: The PARCC Plan envisions arts in public space as part of everyday life, using parks and open spaces as cultural infrastructure, integrating art into trails and facilities, expanding access to arts and cultural experiences, and supporting inclusive, community-based programming.

Today, public art in Redmond includes permanent and temporary works, installations in civic buildings, parks, and infrastructure, as well as programs, events, professional training opportunities, and performance-based activities that collectively shape the public realm. The current program provides a strong foundation, with opportunities to expand the program's reach, visibility, and integration as the city continues to grow.

Design Note

This section should be presented as a series of full-page visuals, each highlighting a different type of public art or programming in Redmond. Use full-bleed imagery with minimal text to emphasize the diversity and everyday presence of art across the city.

Permanent and Temporary Public Art in Redmond

Redmond's public art program employs two complementary approaches: permanent works that establish a lasting civic collection and temporary, rotating projects that introduce flexibility, experimentation, and ongoing activity in public spaces.

Permanent Public Art

Redmond's permanent art collection consists of over 120 works accumulated over five decades and includes paintings, sculptures, bronze castings, and integrated architectural elements.

The collection spans both interior and exterior environments. Artworks are in civic facilities, parks, along trails, within infrastructure, and at key public sites, allowing residents to encounter art in everyday settings. Integrated artworks demonstrate how art has been incorporated into bridges, corridors, and public spaces as part of the city's physical development.

These projects reflect a long-standing approach in Redmond where public art is incorporated into public space design and civic investment. Artworks contribute to

the identity of parks and corridors, enhance civic spaces, and support a sense of place across the city.

At the same time, there is an opportunity to continue strengthening the visibility and impact of public art in highly prominent locations and along key movement corridors, building on the foundation that already exists.

Permanent works contribute to community identity, support wayfinding, and provide continuity within Redmond's evolving landscape. Due to their scale and longevity, they require coordination with capital projects, careful siting, and long-term maintenance planning. When integrated early in the design process, they become essential to how places are constructed rather than being considered afterward.

The current public art collection is documented in Appendix C.

Temporary and Rotating Public Art

Temporary and rotating projects introduce a different dimension to the program. These artworks are designed to change over time, allowing Redmond to adapt to community interests, cultural moments, and emerging artists.

Programs like Redmond Lights commission original light-based works each year, while rotating exhibitions in City facilities, including the Redmond Senior and Community Center, offer ongoing opportunities for regional artists and introduce new works into public view throughout the year.

Temporary works enhance accessibility and promote experimentation. They allow for a broader range of artistic voices, materials, and formats, creating opportunities to activate spaces that may not be suitable for permanent installations. Community feedback consistently highlights the value of temporary art for its flexibility, cultural storytelling, and ability to infuse energy and change into everyday spaces.

A Balanced Approach

Together, permanent and temporary public art create a balanced system. Permanent works build a collection that endures and provides a sense of place, while temporary projects keep the program lively, responsive, and interconnected with the community. This approach allows the City to invest in long-term assets while maintaining flexibility for evolving community priorities.

Programs and Events

In addition to permanent and temporary installations, Redmond's public arts programs integrate creative works into the everyday life of the community. These programs expand the reach of public art across streets, businesses, civic facilities, and events, creating multiple opportunities for artists and audiences to engage.

Redmond Lights

The City's signature winter event activates Downtown Park each season with newly commissioned light-based works by regional artists. This event is one of Redmond's most visible cultural showcases and serves as a key entry point for emerging artists into the public art program.

Downtown Redmond Art Walk

Held annually, the Art Walk partners local businesses with artists to enliven the downtown corridor. It broadens the locations where art can be found, extending beyond civic buildings and parks into the shops and spaces that people visit every day, and provides opportunities not only for visual artists but also for poets, dancers, and musicians.

Community Art Rotating Exhibitions

Located in City facilities, including the Redmond Senior and Community Center, these rotating exhibitions are curated through open calls and panel reviews. They consistently provide visibility for regional artists in spaces that residents frequent.

Poet Laureate Program

Established in 2008, this program broadens the awareness of poetry and reflects the spirit of Redmond's culture. Laureates commission new work, host readings and workshops, and display poetry in public spaces, further extending the reach of public art beyond the visual realm.

Public Art Intensive Eastside

This is the City's primary professional training program for artists interested in public art practice. The multi-day workshop series covers topics such as contracts, budgets, fabrication, community engagement, concepts, and project management. Participants receive a stipend and are eligible to apply for an exclusive temporary public art project, creating a direct pathway into the public art program.

Cultural Arts Operating Support Grants

Redmond provides operational support for arts organizations through its Cultural Arts Operating Support Grant program. This program provides unrestricted funding to Redmond-based nonprofit arts organizations and fiscally sponsored groups serving Redmond residents. These grants support staffing, programming, outreach, and administration, allowing organizations to maintain consistent, year-round activity. Funded initiatives include arts education, youth programming, performances, exhibitions, and cultural heritage projects that enhance access across diverse communities.

Office Hours

This is a free monthly service for local artists, art organizations, and creative communities to drop in and have staff from the City of Redmond Cultural Arts and King County's 4Culture share information about grants, answer questions, review art calls, provide resources, and more.

Spaces and Places

Public art is widely distributed throughout Redmond and is embedded in the places people visit every day. The current collection can be found in civic buildings, parks, urban centers, and along major trails and transportation corridors. Notable locations include Grass Lawn Park, the Redmond Central Connector, the Municipal Campus, fire stations, and City Hall. Additionally, the Sammamish River Trail and

the 90th Street Bridge demonstrate how art can be effectively integrated into infrastructure when incorporated early in the project design process.

(Key Metrics Infographic)

Redmond's Parks and Recreation system provides a robust foundation for future growth. The City manages more than 1,381 acres of land, consisting of 47 parks and 41 miles of public trails, forming an extensive network of everyday spaces that connect neighborhoods and enhance daily life.

The PARCC Plan, adopted in 2023, positions parks, trails, facilities, and programs as central to community life and cultural experiences. This framework aligns public art with the City's existing investments and priorities.

Together, the existing public art collection, civic facilities, parks system, trail network, and infrastructure projects establish the current context for how public art is distributed across Redmond today.

(Add: Map graphic showing distribution of art across the city)

Permitting and Program Access

Redmond's public art program is staff-led and supported by the Redmond Arts and Culture Commission. This commission advises on arts policies, programs, and investments in collaboration with Parks and Recreation and community partners. The processes for artist calls, selections, and commission approvals follow established municipal public art practices, providing a clear framework for delivering both permanent and temporary artworks.

In addition, the City's permitting system facilitates a variety of temporary and event-based cultural activities in public spaces. Special Event Permits and Park Use Permits support community-produced festivals, performances, installations, and community-based activations in public spaces such as parks, streets, sidewalks, and trails.

These systems are vital for delivering public art and cultural programming. They provide the structure that allows artists and organizations to successfully and safely showcase their work in public spaces.

Funding

Redmond's public art program has traditionally relied on a project-triggered percentage model, where funding is generated through specific City capital projects. This method has supported the creation of numerous permanent artworks and established a strong foundation for the program. Because funding is tied to capital project timelines, resources are generated intermittently and vary from year to year, which can make long-term planning challenging and limit the program's ability to support ongoing operational needs.

As a result, the 1% model primarily funds permanent public art. Other program components, including temporary programming, community engagement, and staffing, are supported through the Arts Activity Fund and supplemental funding sources. The Arts Activity Fund provides \$1.50 per capita in dedicated annual funding, while additional support is secured through competitive grants and tourism-related funding, including regional partners such as 4Culture and local lodging tax allocations administered through the Lodging Tax Advisory Committee (LTAC), which support initiatives that demonstrate clear visitor impact.

Community Priorities for Public Art

Redmond is evolving through significant development and visible transformation. The technology and research industries have attracted residents from around the world, creating a city that is globally connected, highly educated, and deeply rooted in strong neighborhood identities.

DRAFT

This unique combination fosters a distinct sense of place. Residents experience Redmond not only as part of an international innovation economy but also as a collection of everyday spaces where community life unfolds.

Throughout community outreach efforts, a consistent theme emerged: residents want a city that reflects their identities, both in policy and in their everyday environments. They seek representation of their cultures, backgrounds, and lived experiences.

Residents expect art to be integrated into parks, trails, and neighborhood centers, becoming a part of their daily routines rather than being isolated as a mere destination.

They value a city that feels vibrant and dynamic, with temporary installations, performances, and cultural programming that bring activity and new experiences.

Feedback from questionnaires and conversations highlighted the community's strong interest in flexible cultural spaces, temporary art, and art that is embedded within the infrastructure they use daily.

(Side Panel Color Block)

Community Input

Community input provides a clear direction for how public art should evolve in Redmond.

- 91% of respondents agree that public art is important to their experience of the city
- 82% prefer art created by local artists with a community connection

Residents expressed a strong interest in:

- Art that enlivens public spaces (48%) and supports local artists (46%)
- Art that creates spaces for gathering and connection (43%)
- A balance of temporary (52%) and permanent (48%) installations

DRAFT

- A balance of neighborhood-based (48%) and central (52%) locations

Preferred types of art include:

- Murals and street art (55%)
- Infrastructure-integrated art (49%)
- Sculpture (47%)
- Functional art (45%)

Public art is expected to feel:

- Inspiring (43%)
- Joyful (42%)
- Connected to community (41%)

Key Themes

Community input also revealed consistent themes that reflect how residents understand Redmond's identity:

- Nature and the environment, including parks, trails, and ecological connections
- Technology and innovation, showcasing Redmond's role as a global tech hub
- Cultural diversity and a global identity shaped by the city's international community
- Community connection and belonging, emphasizing shared experiences and gatherings
- Local history and heritage, including Indigenous history and early settlement patterns

What emerges is a community that values both identity and experience. Public art is anticipated to be visible, relevant, and woven into the functioning of the city.

This understanding informs the Public Art Plan, ensuring that future investments in public art directly address how people live, move, and connect in Redmond today.

The full community questionnaire and engagement summary is included in Appendix A.

(Full Bleed Color Block Page opposite of Our community)

Voices of Redmond

What we heard from artists, educators, cultural organizations, creative businesses, City staff, and community leaders

Redmond's arts and culture ecosystem is active, growing, and ready for its next chapter. Across stakeholder interviews, people described a city with strong momentum, expanding programs, and real civic pride. They also pointed to clear opportunities: improve visibility, reduce barriers, create stronger pathways for artists and organizations, expand cultural infrastructure, and make creativity more present in everyday life.

"Redmond has a real opportunity to become a place where art and science collide."

— Arts organization leader

"Each district should have a distinct identity, and art, design, and public space are key to making that visible."

— City staff

"We need more entry points for emerging and young artists so they can build experience and feel like they belong in Redmond's arts scene."

— Local artist

"I'd rather see more frequent activations and temporary projects alongside permanent art."

— Local artist

"People want places to gather, connect, and innovate. Art can help create that sense of belonging."

— Cultural organization leader

“Public art should reflect Redmond’s history, from its railroad roots to its role as a technology hub.”

— Historian and arts advocate

“Redmond has a unique opportunity to lead in interactive, digital, and game-based cultural experiences.”

— Creative business leader

What this means

These perspectives highlight a strong foundation and shared enthusiasm for arts and culture in Redmond. Building on existing momentum, public art can continue to support identity, belonging, partnerships, and creative experiences throughout the city, making art more visible and integrated into daily life.

Where We Are Going

Public art in Redmond continues to support identity, community life, and cultural experiences across the city. As Redmond grows, public art plays an increasing role in parks, trails, civic spaces, and everyday public environments.

Vision: Public art in Redmond is integrated into parks, trails, and civic spaces as part of everyday life, creating accessible, culturally rich experiences that reflect the community and strengthen identity across the city.

Framework for Action

The following framework establishes the structure for advancing Redmond’s public art program. Three interconnected goals guide this direction.

Framework Goal 1: Citywide Public Art

Objective

Public art is integrated throughout Redmond's parks, infrastructure, neighborhoods, and civic spaces as part of everyday life. Art is encountered naturally through daily movement and use of the public realm, reflecting community identity and strengthening a sense of place.

Strategies

Public art is integrated into infrastructure and capital projects across the city.

- Coordinate across departments to identify opportunities for integration during capital and maintenance projects
- Continue to integrate public art into parks, trails, streetscapes, transit-adjacent areas, civic buildings, and neighborhood facilities
- Establish infrastructure-integrated public art as a distinct and supported category of Redmond's public art program

Public art is distributed equitably and reflects neighborhood identity.

- Center community identity and cultural context as foundational criteria across public art projects
- Use site-specific approaches that draw from local histories, neighborhood character, and lived experience
- Advance geographic equity by distributing public art across neighborhoods, civic spaces, and infrastructure projects
- Support a range of scales and formats — from temporary and rotating projects to infrastructure-integrated art — that allow diverse stories and cultural expressions to surface over time

Public art opportunities include a range of formats and scales.

- Use a mix of permanent, temporary, and programmatic approaches to support daily encounters with art
- Integrate art into routine movement and use of public spaces

Private development contributes to the citywide public art network.

DRAFT

- Increase awareness, clarity, and early coordination of public art incentives within private development processes
- Develop a concise, developer-facing Public Art Toolkit explaining expectations, incentives, and review pathways

Detailed guidance for private development of public art and developer coordination is provided in Appendix H and Appendix I, including a Public Art in Private Development process and a Private Developer Toolkit.

What This Achieves

This approach increases the visibility, access, and relevance of public art. It ensures artwork reflects the diverse community, supports neighborhood identities, and is woven into the fabric of how the city is built and experienced.

To implement this citywide approach, the Plan identifies priority contexts and project types that guide where and how public art is delivered.

Locations and Project Types for Public Art

Building on the goal of Citywide Public Art, this Plan positions public art as a connected system rather than a collection of individual projects. This approach supports a range of scales and timelines, promotes equitable distribution across the city, and makes public art more visible and accessible in everyday life.

Instead of identifying a fixed list of sites, the Plan establishes an opportunity framework that defines where public art investment can have the greatest impact. These priority contexts reflect community input, planned growth, and patterns of public use, allowing the program to remain flexible while still providing clear direction for implementation.

This framework is used to:

- Identify and evaluate potential public art opportunities
- Align public art with capital projects and development activity
- Guide artist calls and appropriate project types
- Balance investment across neighborhoods, districts, and urban centers

A single project may align with multiple contexts, and not all contexts require the same scale or level of investment.

Priority Contexts

Public art investment should be focused on the following contexts:

Mobility Corridors and Daily Routes

Trails, sidewalks, bike routes, and transit-adjacent areas that support daily movement and repeated exposure. These locations are well-suited for integrated, sequential, and wayfinding-oriented artworks.

Parks, Open Spaces, and Natural Systems

Parks and river corridors are central to Redmond's identity. Public art in these settings should respond to landscape, ecology, and seasonal change while supporting gathering, play, and environmental interpretation.

Urban Centers and Areas of Change

Downtown, Overlake, Marymoor Village, and other areas experiencing growth present opportunities to integrate public art early in development. Art in these contexts helps establish identity, support wayfinding, and create human-scale experiences.

Cultural Districts

The Overlake and Marymoor areas are being explored for their potential as future cultural districts. These locations present opportunities for placemaking and cultural expression, with public art helping to reinforce identity, support inclusive gathering, and align with ongoing planning and evaluation efforts.

Community Destinations

Community centers, libraries, and recreation facilities serve as shared civic spaces. Public art should be welcoming, legible, and integrated with programming and everyday use.

Neighborhood Nodes and Local Gathering Places

Neighborhood-scale spaces support smaller, community-driven projects that reinforce local identity and encourage stewardship.

Gateways and Thresholds

Entry points into the city and between neighborhoods are opportunities for highly visible, durable artworks that communicate identity and arrival.

Temporary and Time-Based Opportunities

Temporary and rotating projects can occur across all contexts and artistic disciplines, supporting experimentation, seasonal programming, and expanded access for artists.

From Context to Implementation

These contexts provide a flexible framework for identifying opportunities across the city. They are not intended to predetermine specific sites, but to guide decisions as projects emerge and conditions evolve.

To support implementation, the Plan translates these contexts into:

- **Site types** that define where public art can be integrated
- **Priority locations** that guide near-term investment
- **Project types** that align the right kind of art with the right place

Additional guidance on site types, priority locations, project types, and coordination strategies is provided in Appendix D.

Together, this approach allows Redmond to act strategically while remaining adaptable, ensuring that public art continues to evolve alongside the city.

Private development provides an additional pathway for implementing Citywide Public Art and expanding opportunities across growth areas.

Extending Public Art Through Private Development

To support a truly citywide approach, the city will encourage public art in private developments as Redmond continues to grow.

Strategies

Private development contributes to the citywide public art network.

- Encourage developers to incorporate public art into buildings, open spaces, and site designs
- Provide clear and flexible guidelines that illustrate how art can enhance development projects
- Offer pathways for voluntary contributions, including on-site installations or contributions to city-led initiatives
- Align private development contributions with priority locations, growth areas, and key corridors
- Integrate public art discussions into early project conversations

Additional guidance for private development public art processes and developer coordination is provided in Appendix H.

Framework Goal 1: Citywide Public Art: Implementation Strategy

Citywide Public Art will be implemented through coordinated capital project integration, equitable geographic distribution, and partnerships with private development. The following actions guide how opportunities are identified, prioritized, and delivered over time.

Implementation Focus	Actions
Capital Project Integration	Identify public art opportunities during capital project scoping and concept design phases. Prioritize projects with high visibility, community use, or gateway significance. Incorporate artists into project teams when integration opportunities are identified.
Infrastructure-Integrated Art	Integrate public art into parks, trails, streetscapes, transit areas, and civic facilities. Prioritize durable, site-responsive artworks that function as part of infrastructure.

DRAFT

<p>Geographic Distribution</p>	<p>Use the Priority Contexts framework to guide geographic distribution and project selection. Track distribution across neighborhoods to identify gaps and future opportunities.</p>
<p>Community Identity</p>	<p>Use site-specific approaches that reflect local histories, neighborhood character, and community identity. Align project scale and approach with neighborhood context. <i>Site-specific approaches should be informed by targeted community engagement, stakeholder input, and review of neighborhood characteristics, as outlined in Appendix A.</i></p>
<p>Project Types and Formats</p>	<p>Use a mix of permanent, temporary, and programmatic approaches. Align project type with site conditions, duration, and available funding. Project type may include permanent and temporary installations, murals, sculpture, infrastructure-integrated works, performance-based projects, and programmatic activities. Use temporary projects to test locations and inform future permanent investments. <i>Project types and their appropriate application are described in Appendix D.</i></p>
<p>Priority Context Implementation</p>	<p>Focus investments within mobility corridors, parks, urban centers, cultural districts, gateways, and neighborhood nodes. Align project types with appropriate contexts. Project types may include permanent and temporary installations, murals, sculpture, infrastructure-integrated works, performance-based projects, and programmatic activities. <i>Context-based guidance for selecting project types is provided in Appendix D.</i></p>

Private Development	Introduce public art discussions during early development review meetings. Encourage integration into publicly accessible spaces such as plazas, streetscapes, and building frontages. Align private development opportunities with Priority Contexts and growth areas. <i>Guidance for private development integration is provided in Appendix H.</i>
---------------------	--

Measuring Success

Success for citywide public art will be measured by how consistently public art is integrated into the built environment and experienced across Redmond.

Key indicators include:

- Geographic distribution of public art across neighborhoods, parks, and daily routes
- Number of capital and infrastructure projects that integrate public art early in design
- Public art presence in priority contexts such as mobility corridors, parks, and urban centers
- Participation in temporary and rotating projects across the city
- Positive community feedback on visibility, identity, and sense of place

Progress will be tracked using GIS mapping, project data, and community questionnaires to ensure public art is equitably distributed and integrated into everyday environments.

“Redmond can do both, create one iconic piece that represents the city, while continuing to support smaller, community-driven projects.”— Local artist

Framework Goal 2: Arts Ecosystem

Objective

Redmond supports a connected arts ecosystem that strengthens local artists, cultural organizations, and creative partnerships. By building local capacity and expanding opportunities, public art reflects the stories, identities, and lived experiences of Redmond residents while supporting long-term creative participation.

Strategies

Artists are supported through coordinated pathways and career-stage opportunities.

- Continue the Artist Pipeline program supporting early- and emerging-career artists
- Maintain and strengthen programs such as Office Hours and Public Art Intensive Eastside
- Support mid-career and established artists through commissions, infrastructure projects, and grants
- Connect programs into a coordinated pathway from training to temporary projects to permanent commissions

Creative opportunities reflect diverse disciplines and cultural expression.

- Expand opportunities beyond visual arts to include performance, interdisciplinary, and culturally based practices
- Support temporary, programmatic, and participatory art formats
- Encourage collaboration across disciplines, including visual art, performance, and cultural programming

The arts ecosystem is supported through access, visibility, and coordination.

- Consolidate public-facing information on a centralized landing page
- Assess artist needs every two to three years through questionnaires and program evaluation
- Ensure clarity in artist calls, RFQs, and selection processes

Flexible space and creative activation opportunities are supported.

DRAFT

- Encourage creative use of plazas, storefronts, vacant buildings, and underused spaces
- Support temporary and shared-use models for studios, exhibitions, and performances
- Use temporary activations to test locations and build visibility

Permitting processes support cultural activity.

- Ensure clarity and consistency for temporary art, performances, and cultural activations

Artists advance through a connected pathway of opportunities.

- Artists can enter the program at multiple points based on experience and readiness
- Opportunities range from temporary and small-scale projects to mid-scale commissions
- Professional development supports progression to infrastructure-integrated and capital projects
- Experienced artists are supported through leadership roles and major commissions
- Artists are able to re-engage with the program through repeat opportunities

What This Achieves

This approach builds local artist capacity, strengthens creative careers, and ensures public art reflects the stories and identities of Redmond residents. Artists can enter the program at multiple points and advance over time through a connected system of opportunities. A connected ecosystem increases participation, supports cultural diversity, and creates a more resilient and visible arts community.

Artist Pathways and Opportunities

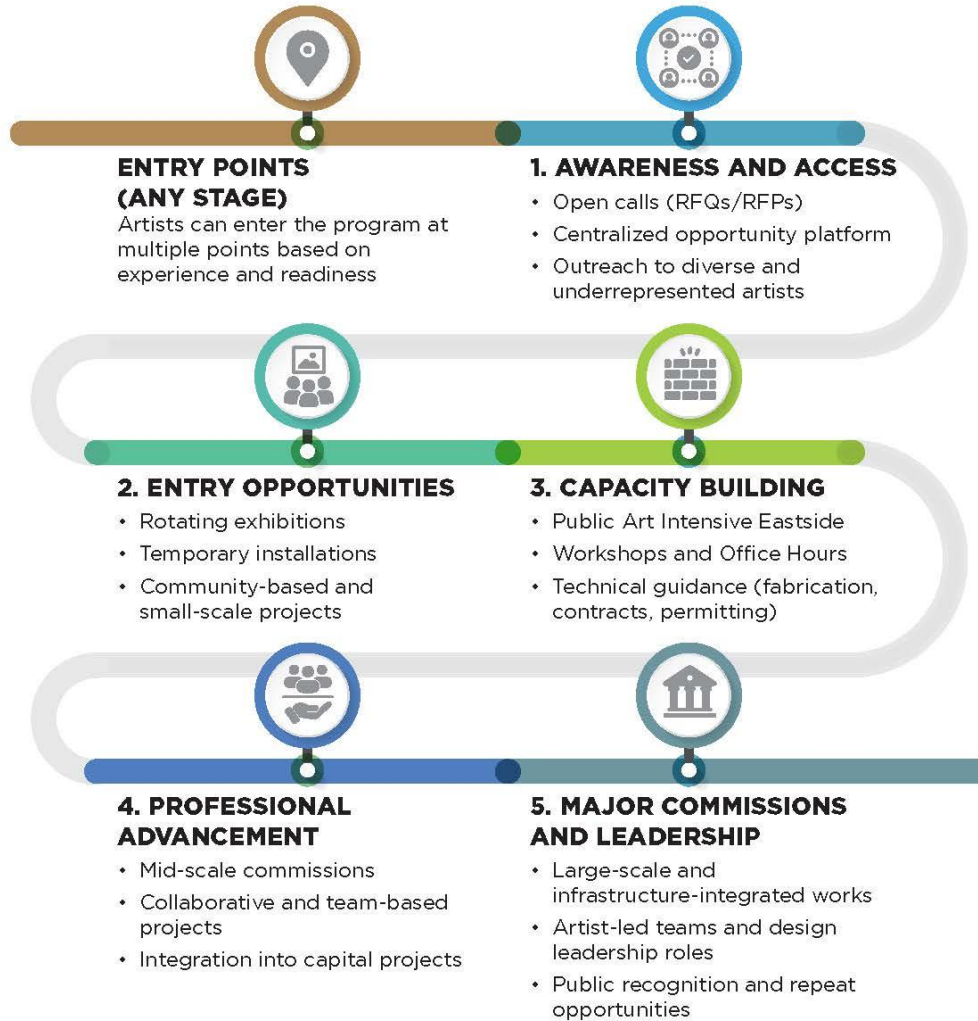
A strong public art program depends on clear and accessible pathways for artists to participate, grow, and contribute over time. In Redmond, this means connecting programs into a coordinated system rather than a series of standalone opportunities.

DRAFT

The following Artist Pathway and Participation Framework illustrates how these opportunities connect to support artists at multiple entry points and stages of advancement. Entry points are not strictly linear and may vary based on an artist's experience, readiness, and project goals. Artists may participate in temporary projects, training opportunities, or major commissions depending on the needs of a project and the qualifications of the artist. The framework is intended to support both emerging and experienced artists, allowing movement between stages over time.

Summary of community engagement and artist input informing these pathways is provided in Appendix A.

ARTIST PATHWAY AND PARTICIPATION FRAMEWORK



PROGRAM FOUNDATION

- Equity and inclusion
- Transparency and clear processes
- Accessible participation pathways
- Ongoing professional development and support

KEY PRINCIPLE

Artists are able to enter at multiple points and advance over time through a connected system of opportunities, support, and experience.

Accessibility Description:

This diagram illustrates an Artist Pathway and Participation Framework showing how artists can enter and advance through the public art program. Artists may enter at multiple points. The pathway includes five stages: (1) Awareness and Access through open calls and outreach, (2) Entry Opportunities such as rotating exhibitions and temporary installations, (3) Capacity Building including workshops and technical guidance, (4) Professional Advancement through mid-scale and collaborative commissions, and (5) Major Commissions and Leadership including large-scale projects and artist-led teams. The framework emphasizes equity, transparency, accessible participation, and ongoing professional development, with artists able to move between stages over time.

How This Works

Redmond’s programs are connected into a coordinated pathway that supports artists from early exposure and training through temporary projects and permanent commissions. Opportunities for emerging and mid-career artists are expanded through temporary installations, exhibitions, and pilot projects, while professional development is provided through programs such as Public Art Intensive Eastside and ongoing Office Hours.

Clear, centralized communication and consistent RFQ processes improve access and transparency. Collaboration across disciplines — including visual arts, performance, and cultural programming — expands participation and reflects the breadth of creative activity in Redmond.

What This Achieves

This approach builds local capacity, supports creative careers, and ensures a diverse range of artists can engage with the program over time. Artists can enter at multiple points and advance through a connected system of opportunities, strengthening representation of Redmond’s community and creative voices.

Framework Goal 2: Arts Ecosystem: Implementation Strategy

Redmond will strengthen the arts ecosystem by connecting programs, expanding disciplines, improving access, and supporting artists across career stages. The following actions guide how opportunities are coordinated, delivered, and expanded over time.

Implementation Focus	Actions
Artist Pathway Development	Connect training, temporary opportunities, and permanent commissions into a coordinated pathway. Support artists at early, mid, and advanced career stages. Provide opportunities for repeat participation and advancement over time.
Career-Stage Opportunities	Continue programs supporting emerging artists. Expand mid-scale commissions and infrastructure-integrated opportunities. Support established artists through leadership roles and major projects.
Disciplines and Creative Formats	Expand participation beyond visual arts to include performance, cultural practices, and interdisciplinary work. Support temporary, participatory, and programmatic approaches. Encourage cross-disciplinary collaboration.
Access and Communication	Consolidate information on a centralized public-facing platform. Use consistent RFQs and clear application

DRAFT

	processes. Improve visibility of opportunities and program pathways.
Temporary Activation and Flexible Space	Encourage creative use of plazas, storefronts, vacant spaces, and shared-use environments. Support temporary installations, performances, and exhibitions. Use temporary activations to test locations and build visibility.
Partnerships and Collaboration	Strengthen partnerships with cultural organizations, creative businesses, and community groups. Support collaborative programming and shared opportunities. Expand participation through partner-led initiatives.
Artist Progression and Re-engagement	Provide multiple entry points for participation. Support progression from temporary projects to permanent commissions. Encourage repeat participation and long-term engagement.
Permitting and Program Support	Clarify permitting processes for temporary art and cultural activity. Streamline coordination for performances, installations, and activations. Support lower-barrier participation opportunities.

Measuring Success

Success for the Arts Ecosystem will be measured by the strength, diversity, and continuity of artist participation and creative opportunities.

Key indicators include:

DRAFT

- Number and diversity of artists participating in programs and commissions, including representation across cultural background, discipline, career stage, geography, and other self-identified characteristics
- Participation across career stages, from emerging to established artists
- Repeat participation and advancement through artist pathways
- Range of disciplines represented, including performance and interdisciplinary work
- Use of temporary activations, shared spaces, and pilot projects

Progress will be tracked through program participation data, artist feedback, and evaluation of access to opportunities across disciplines and career stages.

“The energy is here, and organizations are ready, but we need a shared platform that connects people, programs, and opportunities across the city.”

— Arts organization leader

Framework Goal 3: City Systems

Objective

Redmond establishes clear governance, funding, and coordination systems that support consistent delivery, long-term stewardship, and sustainable growth of the public art program. These systems align departments, clarify roles, and ensure public art is integrated into how the City plans, builds, and maintains public spaces.

Strategies

Public art is coordinated across City departments.

- Establish a staff-led cross-department coordination group including Parks and Recreation, Planning, Public Works, and other relevant departments
- Integrate public art coordination into early stages of capital and privately developed project scoping and design
- Identify opportunities before budgets, timelines, and site constraints are finalized

Public art funding supports long-term program stability.

- Update the public art funding model and ordinance
- Explore supporting staffing through the General Fund
- Use grants and sponsorships as supplemental resources rather than primary funding sources

Governance roles and decision-making structures are clearly defined.

- Clarify and document roles for the Redmond Arts and Culture Commission
- Define authority, responsibilities, and decision-making processes
- Support efficient, transparent, and accountable program delivery

Detailed governance roles and responsibilities are provided in Appendix B.

Staffing and program capacity are aligned.

- Align staffing recommendations with implementation needs
- Coordinate staffing across program delivery and collection stewardship

The public art collection is maintained and stewarded over time.

- Establish maintenance and conservation standards for permanent artworks
- Define roles for inspection, repair, and conservation across departments
- Incorporate maintenance planning into project development and budgets
- Track collection conditions and lifecycle needs
- Coordinate maintenance and conservation as part of long-term stewardship

Detailed maintenance and conservation guidance is provided in Appendix G.

Public art is integrated into City capital projects through a consistent process.

- Identify opportunities within capital projects and infrastructure investments
- Evaluate projects based on visibility, community impact, and alignment with City goals
- Integrate artists into project teams during planning and design
- Coordinate implementation, installation, and long-term stewardship

Public Art Governance Roles and Responsibilities

Purpose

Successful public art programs require coordination between multiple City departments, advisory bodies, and external partners. Collaboration across City departments is essential to support project delivery, installation, and long-term stewardship of the public art collection. Clear roles and responsibilities help ensure consistent decision-making, efficient project delivery, and coordinated long-term management.

Governance and Project Delivery

Public art delivery in Redmond is coordinated through Cultural Arts staff within the Parks and Recreation Department — approximately 1.5 full-time equivalent staff supporting cultural arts and public art activities — working in collaboration with City departments responsible for capital projects, infrastructure, and public space planning and management. Cultural Arts staff lead program coordination, artist selection processes, and project implementation while coordinating with project managers, designers, planners, and partner departments.

The Arts and Culture Commission provides advisory reviews for public art projects, including artist selection, concept development, and major project milestones. City departments participate in project planning, site coordination, installation, and long-term stewardship based on project type and location. This coordinated structure supports consistent decision-making and integration of public art into City projects.

Public art acquisition follows established procedures that guide commissioning, purchase, donation, and loan of artworks. Selection methods vary based on project scale and may include open competitions, limited competitions, invitational processes, or direct purchase. Projects are evaluated based on artistic quality, site compatibility, durability, maintenance requirements, and community relevance. These processes support transparency, artistic excellence, and long-term stewardship of the collection.

Detailed governance roles and responsibilities are provided in Appendix B; acquisition procedures and selection requirements are provided in Appendix E.

Public Art Funding Structure

Purpose

Public art funding in Redmond is supported through a combination of capital funding and program funding that together enable project delivery, artist opportunities, and long-term stewardship. This structure separates funding for capital public art projects from program operations, allowing each to be planned and managed effectively while supporting both near-term implementation and long-term program sustainability.

Funding Structure

Capital public art funding is anticipated to be supported through the City's Capital Improvement Program (CIP), which is developed on a six-year cycle for major capital investments. Establishing a dedicated public art CIP allocation would provide a consistent baseline for commissioning and integrating public art into capital projects and standalone initiatives. CIP funding may also allow resources to accumulate over time, supporting larger or high-impact opportunities. Additional capital funding may be pursued in coordination with major projects or special initiatives, subject to City Council approval.

Program operations, artist opportunities, and collection stewardship are supported through the Arts Activity Fund, which receives revenue from General Fund transfers, grant funding, and other sources. Ordinance 1640 directs appropriations to this fund and supports its use for public art activities. These funds support staffing, temporary and programmatic public art, artist engagement, and ongoing maintenance of the public art collection. Maintenance and conservation activities are funded through this program-level structure rather than the capital public art allocation.

Both capital and program funding sources may carry forward annually, allowing resources to accumulate and be applied strategically over time. While capital

funding supports commissioned and infrastructure-integrated public art, the Arts Activity Fund supports ongoing programming, artist participation, and stewardship of the collection. Together, this coordinated funding structure supports predictable investment in public art while maintaining flexibility to respond to opportunities, partnerships, and evolving community priorities.

This approach aligns public art funding with the City’s capital planning cycle while maintaining operational support for programming and long-term stewardship.

Project prioritization and implementation sequencing are supported by the matrix in Appendix D.

What This Achieves

This approach creates stability, improves delivery, and supports long-term stewardship of Redmond’s public art program. Clear governance, funding, acquisition procedures, and coordination systems allow the City to plan proactively, integrate art into capital projects, and maintain a high-quality collection as it expands. Defined roles and responsibilities support consistent decision-making and coordinated implementation across departments, while dedicated capital and program funding support both project delivery and ongoing program sustainability.

Framework Goal 3: City Systems: Implementation Strategy

City Systems will be implemented through coordinated governance, funding alignment, cross-department collaboration, and long-term stewardship practices. The following actions guide how the program is managed and delivered.

Implementation Focus	Actions
-----------------------------	----------------

DRAFT

<p>Governance Roles and Decision-Making</p>	<p>Clarify roles for Cultural Arts staff, Arts and Culture Commission, City Council, and partner departments. Document decision-making processes for planning, artist selection, and project delivery. <i>Detailed governance roles are provided in Appendix B.</i></p>
<p>Cross-Department Coordination</p>	<p>Establish a staff-led coordination group across departments. Integrate public art into capital project scoping and planning. Identify opportunities before budgets and timelines are finalized.</p>
<p>Funding Structure and Coordination</p>	<p>Align capital public art funding with the six-year CIP cycle. Coordinate Arts Activity Fund resources for programming, staffing, and maintenance. Allow funds to carry forward to support phased implementation and larger projects.</p>
<p>Work Plan and Budget Alignment</p>	<p>Develop and update a six-year Public Art Work Plan aligned with available capital and program funding. Coordinate funding recommendations with the biennial budget process and capital planning cycle.</p>
<p>Staffing and Program Capacity</p>	<p>Align staffing with implementation needs. Coordinate responsibilities across project delivery and collection stewardship. Support program growth as the collection expands.</p>
<p>Capital Project Integration</p>	<p>Identify opportunities within capital and infrastructure projects. Evaluate projects based on visibility, community</p>

DRAFT

	impact, and alignment with City goals. Integrate artists into planning and design phases.
Acquisition and Project Delivery	Use established acquisition procedures to guide commissions, purchases, donations, and loans. Coordinate implementation, installation, and long-term stewardship across departments. <i>Detailed acquisition procedures and selection requirements are provided in Appendix E.</i>
Collection Stewardship and Maintenance	Establish maintenance and conservation standards. Define inspection and repair responsibilities. Incorporate maintenance into project budgets. Track collection conditions and lifecycle needs. <i>Collection management, maintenance, and deaccessioning guidance are provided in Appendix F and Appendix G.</i>
Long-Term Program Management	Maintain consistent processes for project delivery and stewardship. Support sustainable program growth and ongoing evaluation of program needs.

Measuring Success

Success for City Systems will be measured by consistency, coordination, and long-term sustainability of program delivery.

Key indicators include:

- Number of capital and development projects coordinated across departments
- Clarity and efficiency of governance and decision-making processes
- Stability and predictability of program funding

- Timely delivery of public art projects
- Condition, maintenance, and stewardship of the public art collection

Progress will be tracked through annual reporting, project delivery timelines, and collection management data to ensure the program operates consistently and sustainably.

Looking Ahead: Future Opportunities

This Plan focuses on actions that can be implemented within the next six years. At the same time, Redmond is positioned to continue evolving its public art program beyond this horizon.

The following opportunities represent longer-term directions that may be pursued as capacity, funding, and partnerships grow. While not immediate priorities, they provide a framework for continued innovation and program maturity.

Artist Development and Residency Models

Artist-in-Residence programs may be explored as a targeted tool within the broader Artist Lifecycle approach. Residencies can support specific sites, partnerships, or community goals, providing deeper engagement over time rather than one-time project delivery.

Digital Access, Mapping, and Collection Management

Expanding the use of GIS offers a significant opportunity to strengthen both public access and internal management of the collection. A public-facing platform could allow residents and visitors to locate artworks, learn about artists, and explore cultural and historical context across the city.

As a back-end system, GIS can support long-term stewardship by tracking artwork conditions, materials, maintenance history, conservation needs, and inspection schedules in a centralized and consistent format. Standardized data fields would enable proactive care and more efficient coordination across departments.

Program Management and Artist Access Tools

As the program grows, digital platforms for managing artist opportunities, submissions, and calls may be evaluated and integrated. Aligning these tools with internal workflows can improve efficiency, tracking, and reporting while making participation more accessible.

Funding and Capacity Alignment

Future growth will require alignment between funding and staffing capacity. As the program expands, staffing needs can be assessed and adjusted through the City's budget process and capital planning cycles to ensure sustainable delivery.

Creative Space and Partnerships

Supporting access to creative space will remain an ongoing opportunity. The City's role is best positioned as a connector and facilitator, working with partners to expand access rather than directly providing facilities.

Potential strategies include identifying underutilized City-owned spaces, supporting partnerships with organizations that provide creative space, and integrating creative uses into broader civic facilities such as community centers.

Artist Lifecycle Framework

Over time, Redmond can further organize its programs into a clearly defined Artist Lifecycle toolkit. This framework would connect early exposure, training, temporary opportunities, and permanent commissions into a coordinated system that supports artists at every stage of their careers.

While these opportunities point to the program's long-term potential, implementation priorities are embedded within each framework goal and will be advanced through coordinated action over the next six years.

The City of Redmond Public Art Plan 2026–2032 provides a clear framework for integrating public art into the places and systems that shape daily life across the city. Implementation will be guided by the three framework goals, informed by community priorities, and advanced through coordinated action across City departments and partners. The appendices that follow provide supporting policies, processes, and resources for program delivery and long-term stewardship.

Appendices

Appendix A — Community Engagement Summary

Appendix B — Roles and Responsibilities Matrix

Appendix C — Public Art Collection Inventory

Appendix D — Public Art Project Matrix (Proposed)

Appendix E — Public Art Acquisition Policy

Appendix F — Collection Management and Deaccessioning Policy

Appendix G — Maintenance and Conservation Guidelines

Appendix H — Private Development Public Art Process

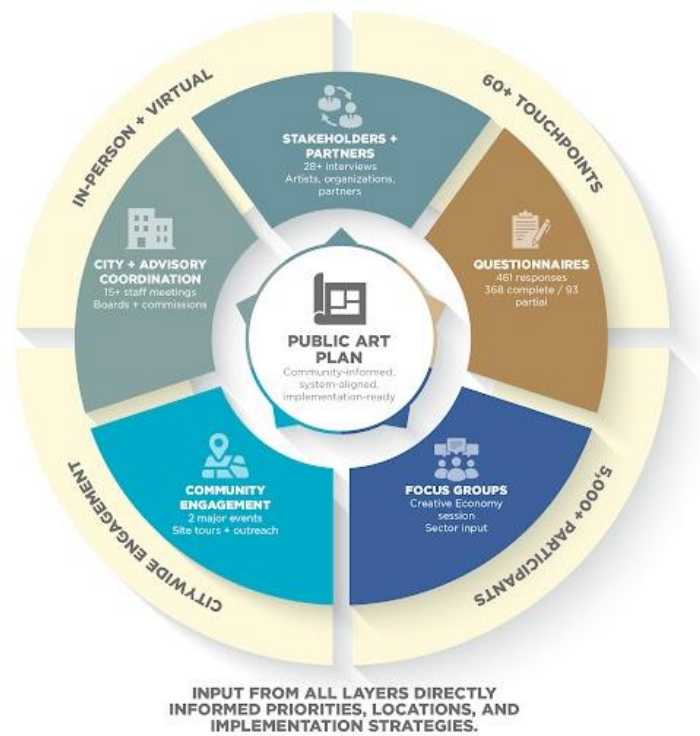
Appendix I — Developer Public Art Toolkit Outline

Appendix A - Community Engagement Summary

This plan is grounded in a comprehensive, multi-layered engagement process designed to reflect how public art is experienced, delivered, and valued across Redmond.

Engagement was structured to combine broad community input with targeted conversations among artists, cultural organizations, City staff, advisory bodies, and elected leadership. The result is a plan that reflects both community priorities and the operational realities required to implement them.

More than 5,000 people were engaged through over 60 touchpoints, including community events, stakeholder interviews, focus groups, questionnaires, and ongoing coordination with City staff and advisory groups. Engagement occurred throughout the planning process using both in-person and virtual formats to maximize access, flexibility, and participation.



Caption: Multi-layered engagement, including a questionnaire, focus groups, stakeholder interviews, advisory coordination, and community outreach, informed priorities, locations, and implementation strategies for the Public Art Plan.

Engagement Approach

The engagement strategy was designed to:

- Provide multiple and accessible points of participation
- Reflect a diversity of perspectives across disciplines, geographies, and lived experience
- Align with City systems, including planning, parks, transportation, and capital delivery
- Balance qualitative insight with measurable community input

This approach supports a plan that is community-informed, operationally grounded, and adaptable over time.

Engagement Activities

City and Advisory Coordination

Ongoing coordination with City staff across departments, including Parks, Planning, Cultural Arts, Communications, and Finance, ensured alignment with capital planning, policy, and implementation capacity. Engagement included more than 15 staff meetings and presentations to boards and advisory groups, including the Arts and Culture Commission, Parks, Trails, and Recreation Commission, Senior Advisory Committee, and Redmond Youth Partnership Advisory Committee.

Stakeholder and Partner Input

More than 26 stakeholder interviews were conducted with artists, cultural organizations, creative businesses, regional partners, and elected officials. These conversations provided detailed insight into artists' needs, partnership opportunities, and barriers related to space, funding, and process.

Community Engagement

Public input was gathered through in-person outreach at Derby Days and Downtown Redmond Art Walk, as well as site visits and walking tours that grounded recommendations in the physical and social context of the city.

Focus Groups and Forums

A Creative Economy focus group convened artists and cultural sector representatives to inform strategies related to workforce development, infrastructure, and partnerships.

Questionnaire

A citywide questionnaire generated 461 total responses, including 368 completed and 93 partial submissions. This feedback informed priorities related to locations, project types, and desired public art experiences.

Overall Reach

DRAFT

- 60+ engagement touchpoints, including meetings, events, interviews, and outreach activities
- 5,000+ total participants reached across all engagement activities
- 461 questionnaire responses
- Engagement conducted through both in-person and virtual formats

Key Themes

Consistent themes emerged across all engagement activities:

- Strong support for public art in parks, trails, streetscapes, and civic spaces
- Desire for a balance of permanent works and temporary or rotating projects
- Interest in interactive and functional art integrated into everyday environments
- Need for clearer artist pathways and more accessible opportunities
- Importance of distributing art across neighborhoods while maintaining visibility in key areas
- Desire for cultural expression that reflects Redmond's diversity and identity

How Engagement Informs This Plan

Engagement findings are embedded throughout the plan and directly inform:

- The shift toward a citywide, integrated approach to public art
- Priority locations aligned with daily movement, parks, and neighborhoods
- A balanced portfolio of permanent and temporary project types
- Expanded artist pathways and ecosystem support
- Implementation strategies focused on coordination, flexibility, and long-term stewardship

Engagement is not treated as a one-time input, but as an ongoing function of the program. The plan establishes a repeatable engagement approach to ensure community input continues to shape public art as projects are implemented over time.

Appendix B - Roles and Responsibilities Matrix

Entity	Primary Role	Key Responsibilities
City Council	Policy and funding authority	Adopt Public Art Plan and policies; approve program funding; support integration of public art into major civic investments.
Parks and Recreation Department	Program administration	Provide overall program oversight; manage Cultural Arts staff; coordinate integration of public art into parks and recreation facilities.
Cultural Arts Staff (1.5 FTE)	Program management	Manage public art projects; coordinate artist selection processes; administer contracts; maintain public art records; coordinate conservation and maintenance; manage partnerships and cultural programming; support Arts and Culture Commission.
Arts and Culture Commission	Advisory body	Review artist selection recommendations; provide input on public art projects and cultural initiatives; advise City Council and staff on cultural policy and program direction.
Planning Department	Development coordination	Coordinate integration of public art opportunities into development projects and planning initiatives; identify potential cultural opportunity areas.
Public Works Department	Technical coordination	Support installation of artworks in streetscapes and infrastructure projects; coordinate site preparation, engineering review, and lighting or electrical systems.

Parks Operations Staff	Site stewardship	Provide routine site maintenance in parks and open spaces; report maintenance issues related to artworks located in parks.
Artists and Artist Teams	Creative leadership	Develop artwork concepts; collaborate with City staff and community stakeholders; fabricate and install artworks in accordance with project agreements.
Community Partners	Cultural activation	Collaborate with the City on programming, performances, and cultural activities in public spaces; help activate public art sites.

Appendix C - Public Art Collection Inventory

(Insert Table)

Appendix D — Public Art Project Matrix (Proposed)

Project Planning Framework

Purpose

This framework guides where and how public art projects are identified, prioritized, and implemented. Site types describe general opportunities, priority locations guide near-term focus, and project types align the appropriate approach to each context. Together, these categories support coordinated planning, flexible implementation, and long-term stewardship.

Site Types

DRAFT

Site types identify common public spaces where art can be integrated through capital projects, partnerships, and program initiatives. A single location may align with multiple site types.

- Community Parks — major gathering spaces suited for permanent, interactive, and programmatic art.
- Neighborhood Parks — community-scaled locations for rotating, interactive, and identity-based work.
- Natural Resource Parks and Open Space — landscape-integrated and interpretive opportunities.
- Urban Parks — high-visibility spaces supporting temporary and permanent works.
- Plazas and Pocket Parks — compact sites suited for pilot and interactive projects.
- Trail Corridors — linear opportunities for sequential and integrated artworks.
- Community Centers — civic destinations supporting interior and exterior integration.
- Privately Owned Public Spaces — publicly accessible spaces within development.

Priority Locations

Priority locations guide phased implementation based on community input, capital readiness, and geographic distribution.

Phase 1 — Early Impact and High Readiness

- Sammamish River corridor and city-owned trail connections
- Downtown Redmond urban center

Phase 2 — Neighborhood Distribution

- Bear Creek corridor and adjacent neighborhoods
- West Redmond neighborhoods

Phase 3 — Opportunity-Driven

- Overlake and South Redmond neighborhoods

Priority locations should be revisited as projects advance and new opportunities emerge.

Project Types

Project types align artwork approach with location, scale, and implementation phase.

(Design Note: This section will include visual examples of work)

- Permanent Sculpture and 3D Works — long-term identity and visibility
- Murals and 2D Art — storytelling and surface activation
- Interactive and Experiential Art — participation and repeat engagement
- Asphalt Art and Surface Interventions — flexible placemaking and pilot projects
- Temporary and Rotating Installations — experimentation and seasonal activation
- Digital and Media-Based Art — selective, site-specific activation
- Social Practice and Performance-Based — community engagement and programming

Project types may be combined to support a balanced and adaptable program.

Public Art Project Matrix

The Public Art Project Matrix identifies proposed public art opportunities through 2032, and guides phased implementation over time. The matrix supports planning, coordination, and alignment with funding, partnerships, and capital projects as opportunities emerge.

(Include full table in text format)

Appendix E - Public Art Acquisition Policy

This policy establishes procedures and criteria for acquiring public art for the City of Redmond’s permanent collection, including commissions, purchases, donations, and loans. The policy ensures artistic quality, public benefit, and long-term stewardship.

Acquisition Principles

These principles guide the evaluation and selection of artworks, supporting consistent decision-making while allowing flexibility across project types and opportunities.

Principle	Policy Direction
Public Benefit	Public art should enhance public spaces and provide meaningful community benefit.
Artistic Excellence	Artworks should demonstrate high artistic quality and originality.
Diversity of Expression	Art should reflect the diversity and character of the community.
Long-Term Stewardship	Maintenance and lifecycle costs must be considered before acquisition.
Collaboration	Encourage artist collaboration with architects, designers, and engineers.

DRAFT

Public Process	Selection processes should include community and stakeholder input.
Documentation	All acquisitions must include contracts, title transfer, and records.
No Restrictions	Gifts should not include restrictions on future relocation or removal.
Permanent Collection	Acquisition implies long-term display and stewardship.

Acquisition Methods

These methods outline how artworks may be acquired, supporting flexible selection processes based on project type, scale, and opportunity.

Method	Description
Open Competition	Public call open to all artists.
Limited Competition	Shortlisted artists invited to submit proposals.
Invitational	One or more artists are invited to develop concepts.

DRAFT

Direct Purchase	Purchase of completed artwork.
Commission	Artist contracted to create new work.
Donation	Artwork donated to the City.
Loan	Temporary or long-term loan.

Cost Thresholds and Selection Requirements

Projects \$25,000 and Above

Requirement	Process
Selection Method	Open competition, limited competition, or a combination.
Selection Panel	Required. Panel typically includes 1–2 community members, 1–2 artists or arts professionals, a receiving department representative, an Arts Administrator, a Redmond Arts and Culture Commission member serving as Chair, and a project architect as a non-voting member when applicable.
Public Input	At least one opportunity for public comment.

DRAFT

<p>Artist Concept Development Stipends</p>	<p>Artist concept development stipends are a standard best practice that support equitable participation and stronger proposals. Stipends compensate artists for time spent developing concepts, attending meetings, and preparing materials. Typical stipends range from \$1,000 to \$5,000 per artist, depending on complexity, or approximately 0.5% to 1.5% of the total project budget.</p>
<p>Arts Advisory Group Panelist Stipends</p>	<p>Arts Advisory Group panelist stipends are a best practice that support inclusive participation and recognize professional expertise and time. Stipends may be provided as a flat honorarium for participation throughout the selection process. Typical stipends range from \$300 to \$1,000 per panelist, depending on the scope of review and number of meetings. City staff and commissioners serving in official roles are typically not compensated.</p>
<p>Redmond Arts and Culture Commission Review</p>	<p>Required.</p>
<p>City Council Approval</p>	<p>Required.</p>
<p>Contract</p>	<p>Required.</p>
<p>Documentation</p>	<p>Full acquisition documentation.</p>

DRAFT

Maintenance Review	Required prior to approval.
--------------------	-----------------------------

Projects Under \$25,000

Requirement	Process
Selection Method	Open competition, limited competition, invitational, or direct purchase.
Selection Panel	Optional. When used, panel composition may be scaled to project size and may include a community representative, an artist or arts professional, a receiving department representative, an Arts Administrator, and a Redmond Arts and Culture Commission member.
Public Input	Optional and based on project visibility or community impact.
Artist Stipends	Optional.
RACC Review	Required.
City Council Approval	Not typically required.

DRAFT

Contract	Required.
Documentation	Required.
Maintenance Review	Required prior to acceptance into the collection.

Artwork Evaluation Criteria

All acquisitions are evaluated using the following criteria, with weighting adjusted based on project goals, site conditions, and the specific artist call.

Criteria	Considerations
Artistic Quality	Originality, creativity, and professional merit.
Site Compatibility	Scale, context, and environment.
Durability	Materials suitable for outdoor or public use.
Maintenance	Reasonable long-term cost.
Safety	No public hazards.

DRAFT

Vandal Resistance	Durable and maintainable.
Community Relevance	Reflects community identity.
Technical Feasibility	Constructability and installation.

Donation and Loan Review

Donations and loans are reviewed using the following steps, with evaluation scaled based on artwork condition, site suitability, and long-term stewardship considerations.

Step	Requirement
Initial Review	Staff meet with the donor to discuss the proposed artwork, ownership, and intent.
Evaluation Criteria	Artwork evaluated based on artistic quality, condition, maintenance requirements, installation requirements, appropriate site availability, donor restrictions, and public safety considerations.
Department Review	Receiving department reviews siting, maintenance, and operational considerations.

DRAFT

RACC Review	Redmond Arts and Culture Commission reviews and provides its recommendation.
Implementation Plan	Required if accepted, including site, installation, and responsibilities.
Title Transfer	Required for donated artworks.
Loan Agreements	Required for long-term loans.
Documentation	Artwork added to collection inventory with maintenance requirements.

Acquisition Requirements and Acceptance

Acquisition and acceptance requirements guide how artworks are incorporated into the collection, with documentation and review scaled based on project type, complexity, and long-term stewardship considerations.

Category	Requirements
Artist Responsibilities	Enter into a contract with the City, coordinate with City staff, provide final design documentation, fabricate and install artwork, provide maintenance instructions, participate in public presentation when requested, and submit any proposed changes for approval.

Acquisition Documentation	Artist contract, title transfer documentation, budget and invoices, fabrication drawings, maintenance instructions, materials list, installation documentation, location information, and baseline condition documentation.
Acceptance into Permanent Collection	Artwork becomes part of the City collection, artwork is sited appropriately, artwork is maintained by the City, artwork may be relocated, if necessary, artwork may be deaccessioned in accordance with City policy.

Appendix F - Collection Management and Deaccessioning Policy

The City maintains and manages public art as a long-term civic collection.

Collection Management

Collection management practices guide the care and oversight of artworks over time, with procedures applied based on artwork type, condition, and long-term stewardship needs.

Category	Policy
Collection Records	Maintain inventory, including artist, title, date, materials, location, and ownership. Track expected lifespan, conservation needs, and replacement requirements for each artwork.

DRAFT

Documentation	Maintain contracts, drawings, maintenance instructions, and condition records.
Condition Assessments	Conduct periodic condition reviews of artworks.
Inventory Updates	Update records following installation, relocation, or conservation.
Labeling	Provide consistent plaques and identification signage.
Location Tracking	Maintain accurate site documentation for all artworks.
Loans	Track loan agreements, duration, and responsibilities.
Integrated Works	Coordinate with departments for artworks integrated into infrastructure.

Deaccessioning Policy

Deaccessioning is the formal removal of artwork from the City collection. Removal is considered only after careful review.

Deaccession Criteria

Deaccession decisions are evaluated using the following criteria, applied as appropriate based on artwork condition, site changes, safety considerations, and long-term stewardship needs.

Criteria	Description
Damage	Artwork damaged beyond reasonable repair.
Safety	Artwork presents a safety risk.

DRAFT

Site Changes	Site removed or significantly altered.
Lack of Display	Artwork is not displayed or is rarely displayed.
Adverse Public Response	Sustained adverse public opinion over time.
Authenticity	The authenticity or quality of the artwork is in question.
Department Request	Receiving department requests review.
Artist Request	Artist requests removal.
Maintenance	Excessive or impractical maintenance costs.
Deterioration	Materials fail or degrade.
Security	Condition or security cannot be reasonably assured.
Lack of Feasibility	Relocation is not feasible.
Collection Goals	Artwork no longer aligns with program goals.

Deaccession Review Process

Consistent with the 2010 Arts Management Plan, deaccession of artwork should occur through a formal review process to ensure transparency, professional evaluation, and public accountability. Deaccession may be considered when an artwork is damaged beyond repair, poses safety concerns, no longer meets site requirements, cannot be reasonably maintained, or no longer aligns with program goals.

Step	Action	Responsibility

DRAFT

Initiation	Initiate review based on condition, safety, site change, maintenance, public concern, or other adopted criteria.	Redmond Arts and Culture Commission (RACC) majority vote or City Council direction
Documentation Review	Compile background information, including artist contract, maintenance history, and site conditions.	City staff
Artist Notification	Artist notified when feasible prior to removal in accordance with the Visual Artists Rights Act (VARA) considerations.	City staff with RACC coordination
Professional Review	Obtain a professional evaluation from qualified experts (conservator, engineer, arts professional, etc.).	RACC with staff support
Public Input	Review public input and conduct a discussion at an open public meeting.	RACC
Mitigation Consideration	Determine whether mitigation is possible (repair, relocation, conservation, or other corrective action).	RACC
Disposition Decision	If mitigation is not feasible, consider disposition options in priority order: relocation, removal and storage for future siting, sale, trade, or transfer, and destruction as a last resort.	RACC
Documentation	Update inventory, records, and collection status.	City Staff

Final Determination	Final and binding decision	RACC
---------------------	----------------------------	------

Appendix G - Maintenance and Conservation Guidelines

The City provides stewardship for the public art collection to ensure safety and longevity.

Maintenance Responsibilities

Maintenance responsibilities identify roles for inspection, repair, and long-term care of public artworks.

Category	Responsibility
Routine Maintenance	Cleaning and minor repairs.
Lifecycle Planning	Plan for conservation and replacement over the expected lifespan.
Condition Monitoring	Periodic inspection of artworks.
Conservation	Professional conservation when needed.
Repairs	Structural or material repair.
Documentation	Record maintenance and conservation actions.
Coordination	Work with departments for integrated artworks.
Technical Review	Coordinate with engineers or fabricators when structural repairs are required.

Artist Requirements

Artist requirements outline qualifications and expectations for artists participating in public art projects.

Requirement	Description
Insurance Information	Artist provides fabrication and installation insurance documentation when applicable.
Maintenance Plan	Artist provides maintenance instructions.
Materials List	Artist provides materials and finishes.
Fabrication Drawings	Provided for future repair.
Lifespan	Expected lifespan and conservation needs.
Replacement Parts	Identify replaceable components.

Maintenance Review Considerations

Maintenance review considerations guide the evaluation of long-term care, durability, and resource needs for proposed artworks.

Criteria	Description
Lifecycle Cost	Evaluate long-term maintenance cost over the lifespan.
Durability	Material performance.
Replacement Strategy	Determine if components can be replaced.
Exposure	Weather and public interaction.

Vandalism	Resistance and repairability.
Access	Ability to maintain safely.

Appendix H - Private Development Public Art Process

Public art incorporated into private development projects is reviewed to ensure quality, durability, and compatibility with the surrounding environment.

Category	Requirements
Applicability	Applies to publicly visible artwork incorporated into private development projects.
Early Coordination	Planning staff notify the Cultural Arts staff when public art is proposed.
Concept Development	Developers may share preliminary concepts with staff prior to final submittals to confirm location, scale, and integration. The developer works with staff to refine the concept.
Submittal Requirements	Site plan showing artwork location, scaled drawings and elevations, context drawings, materials and color samples, artist qualifications, maintenance and conservation plan, project schedule, budget when applicable, and evidence of liability coverage.

DRAFT

Submittal Timing	Submittal provided in advance of Arts and Culture Commission meeting to allow staff and Commission review.
Review Criteria	Appropriateness of location and scale, relationship to surrounding environment, alignment with neighborhood design guidelines, artistic quality and artist qualifications, constructability and durability, maintenance and conservation requirements, and public safety and ADA considerations.
Commission Review	The developer presents a proposal to the Arts and Culture Commission, which evaluates the artwork using the review criteria and submitted materials described below.
Commission Decision	Commission approves, approves with conditions, or rejects proposal.
Documentation	Staff issues decision letter and coordinates with planning staff.
Maintenance Responsibility	Developer retains responsibility for maintenance unless otherwise agreed.

Appendix I - Developer Public Art Toolkit Outline

The Developer Public Art Toolkit provides guidance for integrating publicly visible artwork into private development projects.

Section	Content
---------	---------

DRAFT

Overview	Purpose of public art in private development and benefits to projects and community.
When Public Art Applies	Applicable zoning incentives, blank wall treatments, design flexibility, development agreements, and voluntary participation.
Types of Public Art	Sculpture, integrated façade elements, lighting, paving, murals, landscape-integrated art, and temporary installations.
Process Overview	Early coordination with the City, concept development, submittal, Arts and Culture Commission review, and approval.
Submittal Checklist	Site plan, concept drawings, context views, materials and finishes, artist qualifications, project description, maintenance plan, schedule, budget when applicable, and evidence of liability coverage for review by the Arts and Culture Commission.
Review Criteria	Location and scale, artistic quality, integration with site, durability, maintenance, and public safety.
Maintenance Responsibility	Developer responsible for long-term maintenance unless otherwise agreed.
Best Practices	Engage artists early, integrate with architecture and landscape, ensure durability, and design for public visibility.
Coordination	Contact information and timing for coordination with City staff.

This toolkit supports consistent review, clear expectations, and successful integration of public art into private development.

Developer Public Art Submittal Checklist

Developers proposing public art should include the following:

Item	Description
Site Plan	Location of artwork within development.
Concept Drawings	Scaled drawings and elevations.
Context Views	Artwork shown in surrounding environment.
Materials	Materials, finishes, and colors.
Artist Information	Artist qualifications or resume.
Description	Narrative describing concept and intent.
Maintenance Plan	Long-term maintenance responsibilities.
Schedule	Fabrication and installation timeline.
Budget	Project budget when applicable.
Liability	Evidence of liability coverage.