

Demonstration Dog Park

Performance:

- Operational between April and September 30, 2023.
- Maintenance & Operations staffing needs average 8 hours/week.
- Facility support includes line trimming, hole filling, fence repairs, trash/dog waste disposal, etc.

Community Feedback:

- Let's Connect Questionnaire during and after the demonstration period.
- 327 respondents, 262 dog owners.
- 174 from the “millennial” generation.
- 161 live in Downtown neighborhood.



82% support or strongly support the off-leash dog park

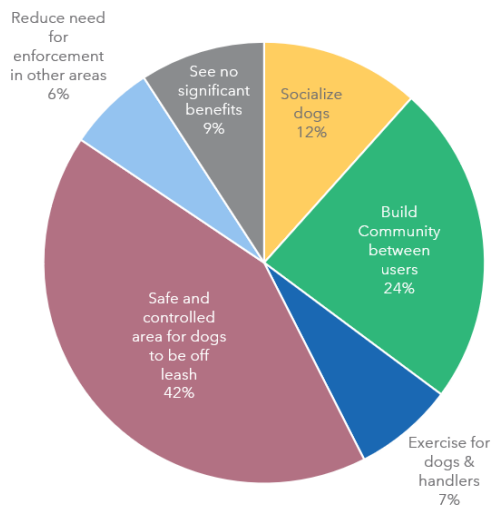


49% of users do not have access to backyard

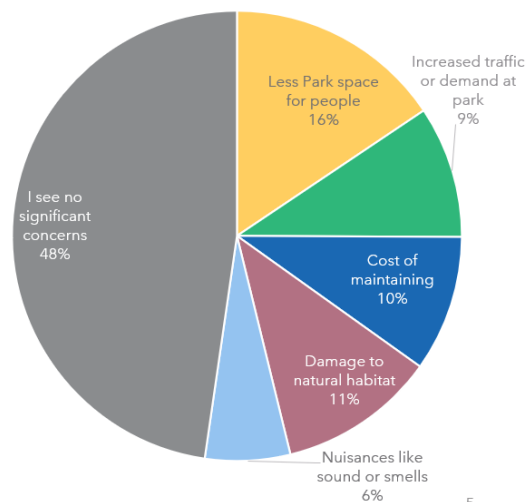


75% of users visited at least weekly (25% used daily)

What do you think would be the most significant **positive impact** of more off leash dog areas?



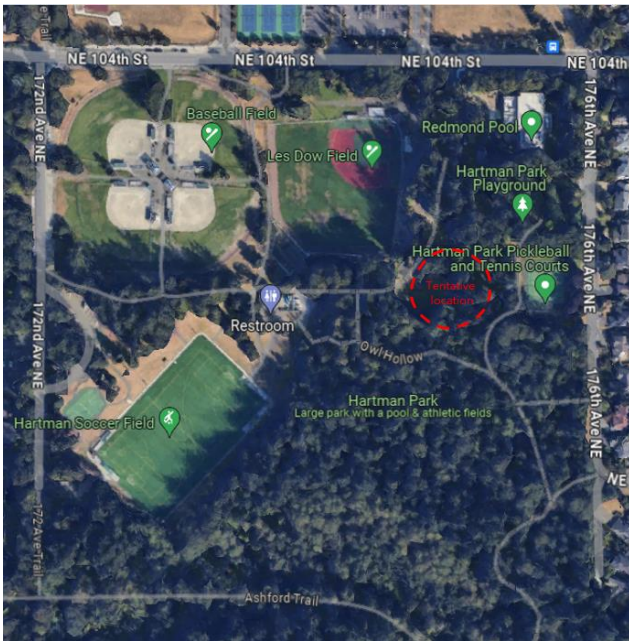
What do you think would be the most significant **negative impact** of more off-leash dog areas?



5

Budget

- \$102,000 budgeted for the biennium.
- 34% of budget spent to date.
- Significant cost savings from re-purposing surplus fencing.



Next Steps:

- Construct two off-leash, demonstration dog parks in 2024 at Luke McRedmond Park and Hartman Park.
- Run from April thru September.
- Permanent dog park proposed in the CIP, location TBD.

Community Gardens

Performance:

- 10 new plots and community tool shed were opened to the public in the beginning of April 2023
- All plots were fully reserved.
- Maintenance & Operations staff built beds, pathway improvements, irrigation, and fencing.
- Project included addition of 4 raised, ADA accessible plots.
- There are limited ongoing staffing or maintenance needs for gardens.



Budget:

- 77,500 budgeted for the biennium.
- 54% of budget spent to date on staffing, materials & outreach.

Next Steps:

- Prioritize expansion in urban centers and locations with multimodal accessibility in Q2 and Q3 of 2024.
- There are limited options with sun exposure, irrigation, and enough space in Downtown core.

