

ATTACHMENT B



City of Redmond
WASHINGTON

CITY COUNCIL STAFF REPORT

Sound Transit Light Rail in Redmond

June 16, 2020

Purpose

- Update Council on light rail projects in Redmond

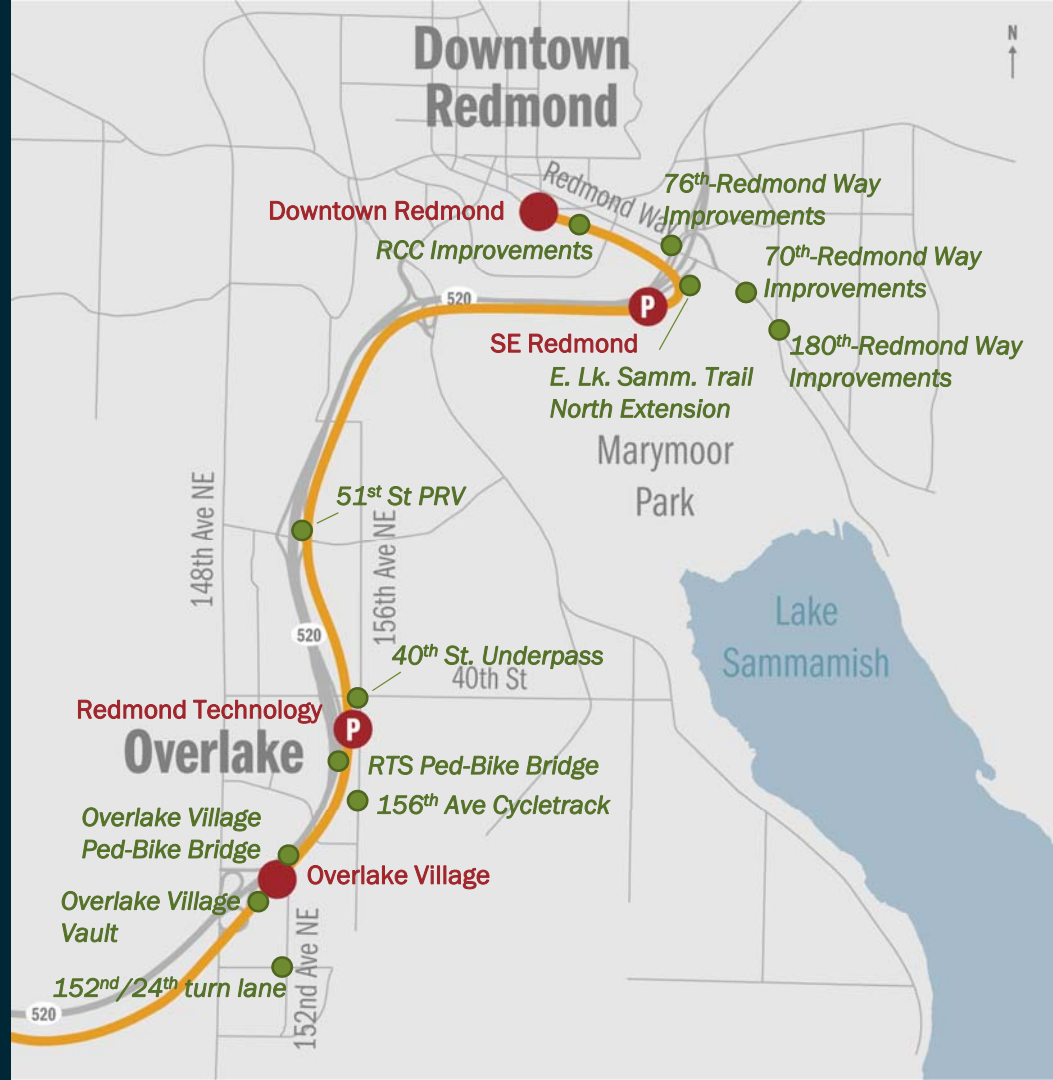


What we are asking Council to do tonight

- Receive project update
- Ask questions

Map and Timeline

- 2006 – Environmental review began
- 2016 – Overlake construction began
- 2020 – Downtown extension construction begins and Overlake civil construction ends
- 2023 – Overlake stations open
- 2024 – Downtown extension opens





Outline for tonight

- Overlake construction and closeout
- Redmond Technology Station Bridge construction update
- Downtown Redmond Link Extension construction outlook for 2020
- Upcoming outreach activities
- City Council actions in 2020



City of Redmond
WASHINGTON

Overlake Construction

Overlake Village Station

Overlake Village
Vault

TOD Opportunity

Overlake Village Ped-Bike Bridge





Crews pave OVS plaza



*OVS plaza, ticket vending machines, and
“paper clip ramp”*

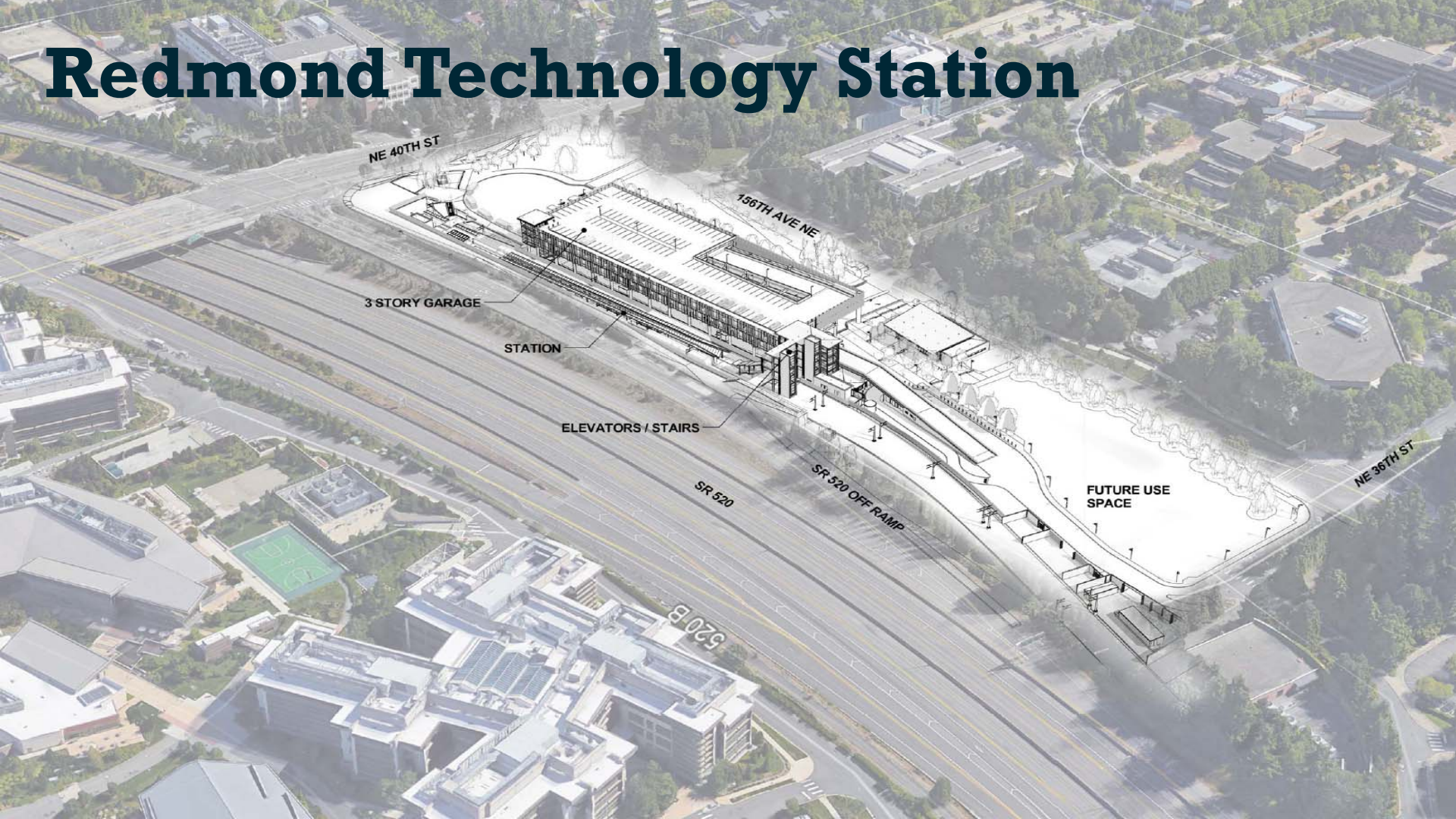


OVS Bridge and Tracks looking southwest



OVS Ped-Bike Bridge truss setting is complete over SR520

Redmond Technology Station



NE 40TH ST

156TH AVE NE

3 STORY GARAGE

STATION

ELEVATORS / STAIRS

SR 520

SR 520 OFF RAMP

FUTURE USE SPACE

NE 36TH ST

520 B



Transit loop art

Station platform



Architectural rendering

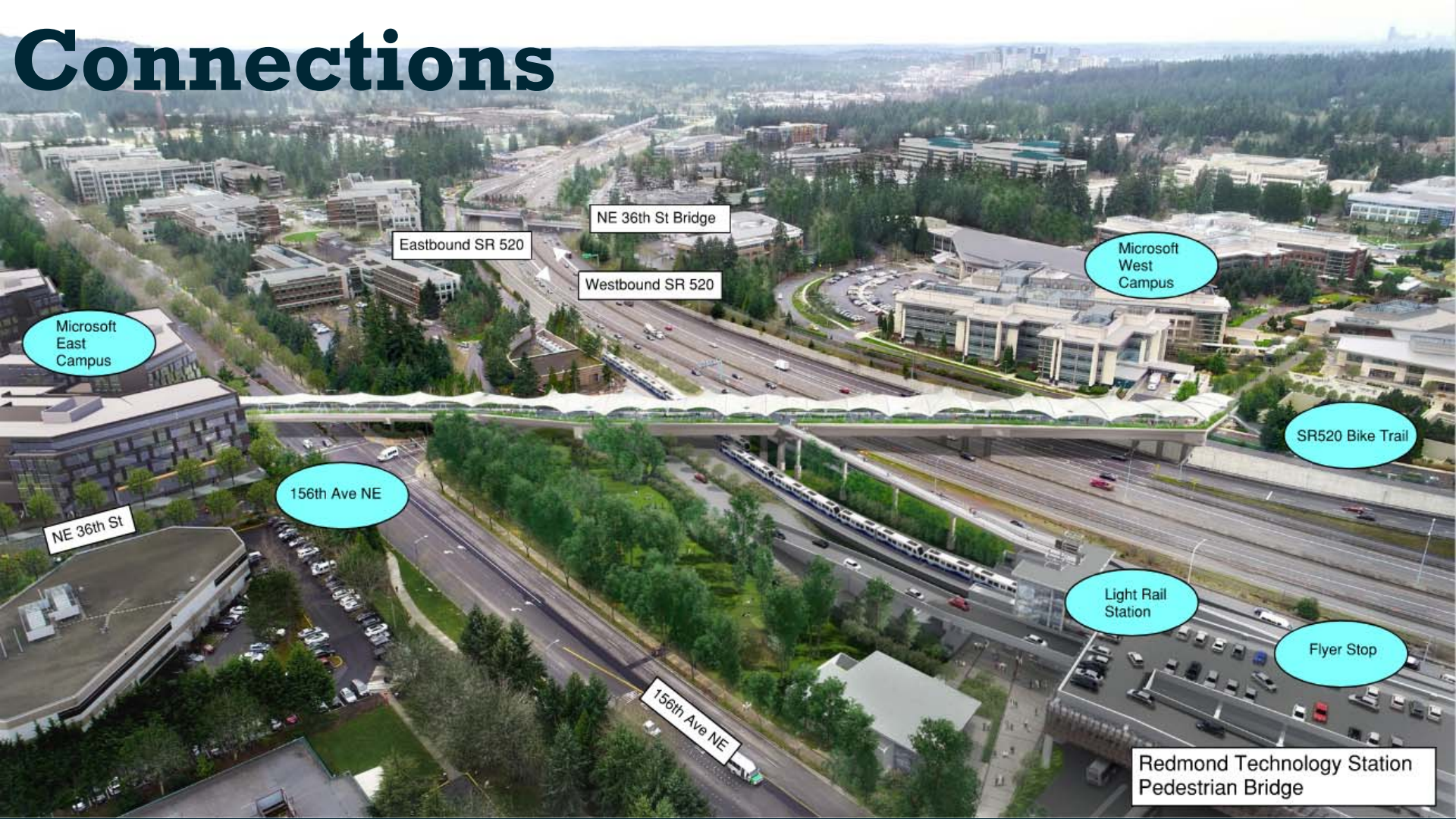
RTS Bridge Construction



Overview



Connections



Microsoft East Campus

Microsoft West Campus

SR520 Bike Trail

156th Ave NE

Light Rail Station

Flyer Stop

Redmond Technology Station Pedestrian Bridge

NE 36th St

156th Ave NE

Eastbound SR 520

Westbound SR 520

NE 36th St Bridge

Schedule



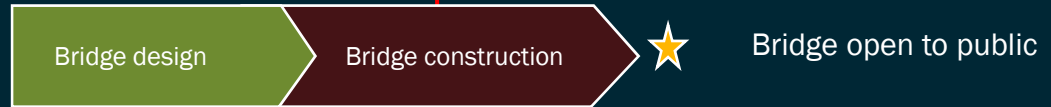
We are here

2014 2015 2016 2017 2018 2019 2020 2021 2022 2023

Light Rail Station



RTS bridge





Pier 8 in the 156th Ave median.

Looking east towards the
Microsoft East Campus
Refresh project

Piers 3 and 4 Looking west

First girders were set
at Pier 3 on 6/11/20



Pier 3

Pier 4





"I" girders ready to ship to the site
8.5' high, 4.3' wide, 161' long, 127 tons



"Tub" girders ready to ship to the site
5' high, 8' wide (top), 105' long, 80 tons



View looking north on SR520 – Studio A to the left; new rail station in right background

DRLE Construction



Test Shaft Drilling





Art Relocation

Haul Roads

- Along east, south sides of SR 520
- Needed to construct light rail guideway
- Includes tree removal



Cut-and-Cover Tunnels



NE 40th Street

NE 51st Street

NE 60th Street

520

EB 500+00

EB 5025+00

EB 5050+00



RTS

Upcoming Outreach

Methods

- City communications
- ST project updates and alerts
- Web and social media updates
- Permit notices

Focus Areas

- Spring: design update
- Summer: haul road construction
- Fall: cut-and-cover tunnel construction



2020 Council Actions

1. Overlake Village and Redmond Technology Station Operation & Maintenance Agreements (Q3)
2. 40th St. Underpass Operations and Maintenance Agreement (Q3)
3. 156th Ave Cycletrack Funding Agreement (Q4)
4. NE 70th St Right-of-Way Vacation (Q4)
5. RTS Bridge Consultant Supplemental Contract (Q4-Q1 2021)

An architectural rendering of a modern transit station at night. The station features a prominent concrete overpass with a metal railing. Below the overpass, a large glass entrance is illuminated from within, with the words "DOWNTOWN REDMOND" displayed above the glass. A sign above the entrance reads "Redmond School". People are shown walking on the sidewalk, including a person in a wheelchair. The scene is lit with warm interior lights and cool exterior streetlights, with trees and other buildings visible in the background.

Thank you. Any questions?

Don Cairns, Transportation Planning and Engineering Manager
dcairns@redmond.gov or x2834