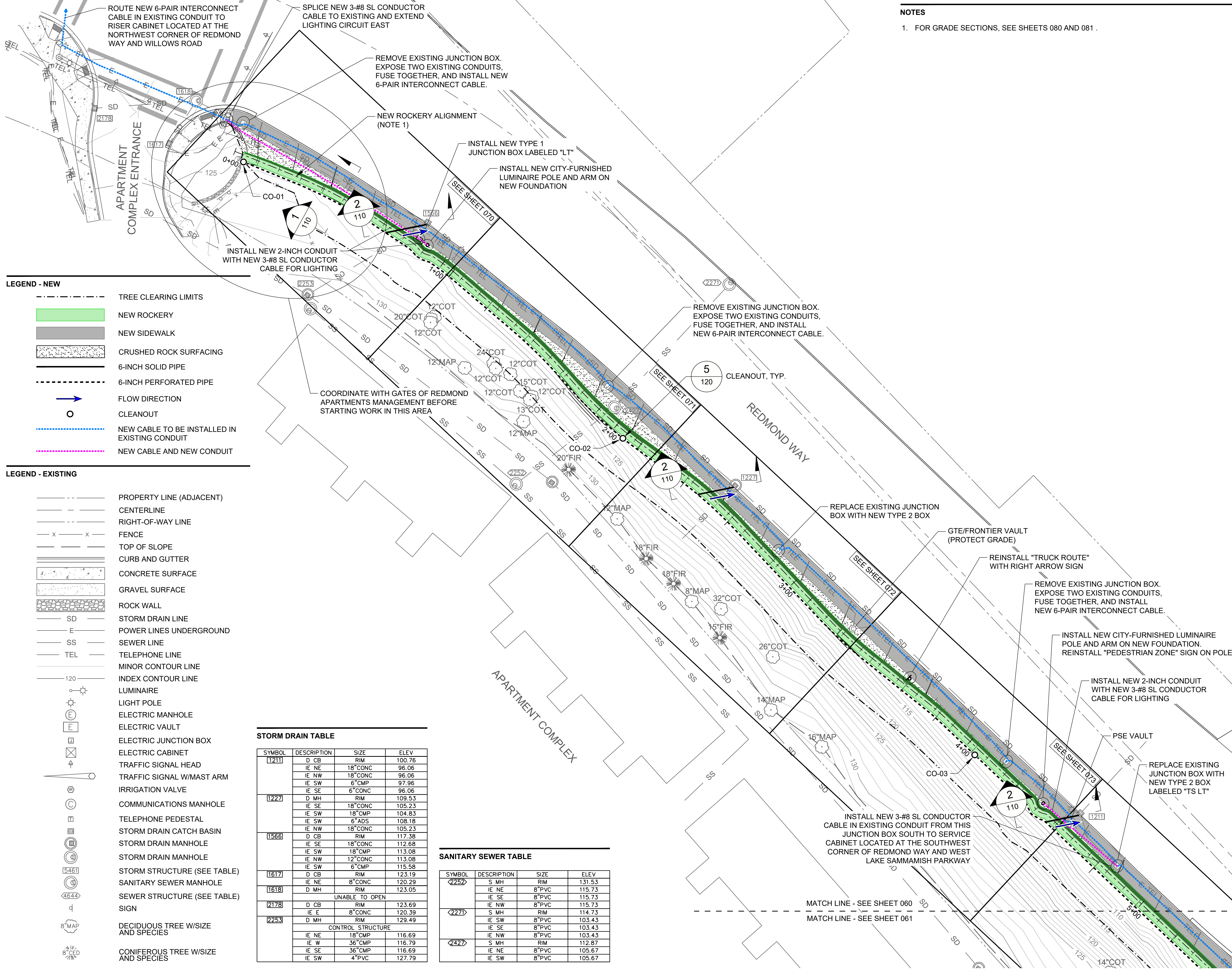
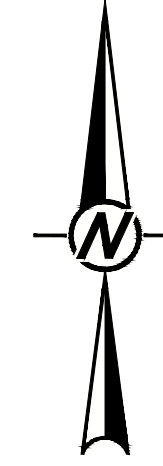


Path: I:\redmond\_golder\gis\workspaces\redmondrockery\080\_Design\02\_PROD\002\_008.dwg | Last Edited By: vrayner | Date: 2020-08-11 11:56:47 PM  
 Path: I:\redmond\_golder\gis\workspaces\redmondrockery\080\_Design\02\_PROD\002\_008.dwg | Last Edited By: vrayner | Date: 2020-08-11 11:56:47 PM



**NOTES**

1. FOR GRADE SECTIONS, SEE SHEETS 080 AND 081.



**LEGEND - NEW**

- TREE CLEARING LIMITS
- NEW ROCKERY
- NEW SIDEWALK
- CRUSHED ROCK SURFACING
- 6-INCH SOLID PIPE
- 6-INCH PERFORATED PIPE
- FLOW DIRECTION
- CLEANOUT
- NEW CABLE TO BE INSTALLED IN EXISTING CONDUIT
- NEW CABLE AND NEW CONDUIT

**LEGEND - EXISTING**

- PROPERTY LINE (ADJACENT)
- CENTERLINE
- RIGHT-OF-WAY LINE
- FENCE
- TOP OF SLOPE
- CURB AND GUTTER
- CONCRETE SURFACE
- GRAVEL SURFACE
- ROCK WALL
- SD
- E
- SS
- TEL
- 120
- LUMINAIRE
- LIGHT POLE
- ELECTRIC MANHOLE
- ELECTRIC VAULT
- ELECTRIC JUNCTION BOX
- ELECTRIC CABINET
- TRAFFIC SIGNAL HEAD
- TRAFFIC SIGNAL W/MAST ARM
- IRRIGATION VALVE
- COMMUNICATIONS MANHOLE
- TELEPHONE PEDESTAL
- STORM DRAIN CATCH BASIN
- STORM DRAIN MANHOLE
- STORM DRAIN MANHOLE
- STORM STRUCTURE (SEE TABLE)
- SANITARY SEWER MANHOLE
- SEWER STRUCTURE (SEE TABLE)
- SIGN
- DECIDUOUS TREE W/SIZE AND SPECIES
- CONIFEROUS TREE W/SIZE AND SPECIES

**STORM DRAIN TABLE**

SYMBOL	DESCRIPTION	SIZE	ELEV
1211	D CB	RIM	100.76
	IE NE	18" CONC	96.06
	IE NW	18" CONC	96.06
	IE SW	6" CMP	97.96
	IE SE	6" CONC	96.06
1222	D MH	RIM	109.53
	IE SE	18" CONC	105.23
	IE SW	18" CMP	104.83
	IE SW	6" ADS	108.18
	IE NW	18" CONC	105.23
1566	D CB	RIM	117.38
	IE SE	18" CONC	112.68
	IE SW	18" CMP	113.08
	IE NW	12" CONC	113.08
	IE SW	6" CMP	115.58
1617	D CB	RIM	123.19
	IE NE	8" CONC	120.39
1618	D MH	RIM	123.05
2178	D CB	UNABLE TO OPEN	
	IE E	8" CONC	123.69
	D MH	RIM	129.49
2253		CONTROL STRUCTURE	
	IE NE	18" CMP	116.69
	IE W	36" CMP	116.79
	IE SE	36" CMP	116.69
	IE SW	4" PVC	127.79

**SANITARY SEWER TABLE**

SYMBOL	DESCRIPTION	SIZE	ELEV
2252	S MH	RIM	131.53
	IE NE	8" PVC	115.73
	IE SE	8" PVC	115.73
	IE NW	8" PVC	115.73
2271	S MH	RIM	114.73
	IE SW	8" PVC	103.43
	IE SE	8" PVC	103.43
	IE NW	8" PVC	103.43
2427	S MH	RIM	112.87
	IE NE	8" PVC	105.67
	IE SW	8" PVC	105.67

**FINAL DESIGN DRAFT**

0 20 40  
1" = 20' FEET

CLIENT: CITY OF REDMOND

PROJECT: REDMOND WAY ROCKERY REPLACEMENT, WASHINGTON

TITLE: SITE PLAN OVERVIEW (1 OF 2)

PHASE: 008

PROJECT NO.: 1403741903

REVISIONS:

REV.	DATE	DESCRIPTION	BY
D	2020-06-12	FINAL DESIGN DRAFT FOR REVIEW	VMN
C	2020-02-28	100% DESIGN	VMN
B	2019-12-02	60% DESIGN	VMN
A	2019-08-16	30% DESIGN	VMN
REV.	YYYY-MM-DD	DESCRIPTION	DESIGNED
		PREPARED	REVIEWED
		APPROVED	

CONSULTANT: GOLDER

REDMOND 18300 NE UNION HILL ROAD REDMOND, WA 98052 USA

TEL: (425) 883-0777 WWW.GOLDER.COM

DATE: 2020-06-11 11:56:47 PM

Path: \\redmond\goldr\gis\matt\cadd\redmond\rockery\080\_Design\02\_PROD\DUCTION\DWG\1 File Name: 1403741903\_008.dwg | Last Edited By: vrayner Date: 2020-08-11 Time: 5:30:27 PM | Printed By: vrayner Date: 2020-08-11 Time: 5:06:02 PM

**LEGEND - NEW**

- TREE CLEARING LIMITS
- NEW ROCKERY
- NEW SIDEWALK
- CRUSHED ROCK SURFACING
- NEW PARKING AREA (NOTE 2)
- GRAVEL BALLAST AREA
- 6-INCH SOLID PIPE
- 6-INCH PERFORATED PIPE
- FLOW DIRECTION
- CLEANOUT
- CATCH BASIN TYPE 1 WITH VANED GRATE
- NEW CABLE TO BE INSTALLED IN EXISTING CONDUIT
- NEW CABLE AND NEW CONDUIT

**LEGEND - EXISTING**

- PROPERTY LINE (ADJACENT)
- CENTERLINE
- RIGHT-OF-WAY LINE
- FENCE
- TOP OF SLOPE
- CURB AND GUTTER
- CONCRETE SURFACE
- GRAVEL SURFACE
- ROCK WALL
- SD STORM DRAIN LINE
- E POWER LINES UNDERGROUND
- SS SEWER LINE
- TEL TELEPHONE LINE
- MINOR CONTOUR LINE
- INDEX CONTOUR LINE
- LUMINAIRE
- LIGHT POLE
- ELECTRIC MANHOLE
- ELECTRIC VAULT
- ELECTRIC JUNCTION BOX
- ELECTRIC CABINET
- TRAFFIC SIGNAL HEAD
- TRAFFIC SIGNAL W/MAST ARM
- IRRIGATION VALVE
- COMMUNICATIONS MANHOLE
- TELEPHONE PEDESTAL
- STORM DRAIN CATCH BASIN
- STORM DRAIN MANHOLE
- STORM DRAIN MANHOLE
- STORM STRUCTURE (SEE TABLE)
- SANITARY SEWER MANHOLE
- SEWER STRUCTURE (SEE TABLE)
- SIGN
- DECIDUOUS TREE W/SIZE AND SPECIES
- CONIFEROUS TREE W/SIZE AND SPECIES
- DITCH (REFERENCE NOTE 2)

**STORM DRAIN TABLE**

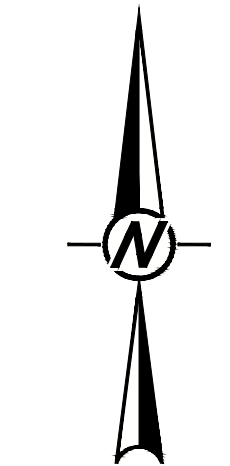
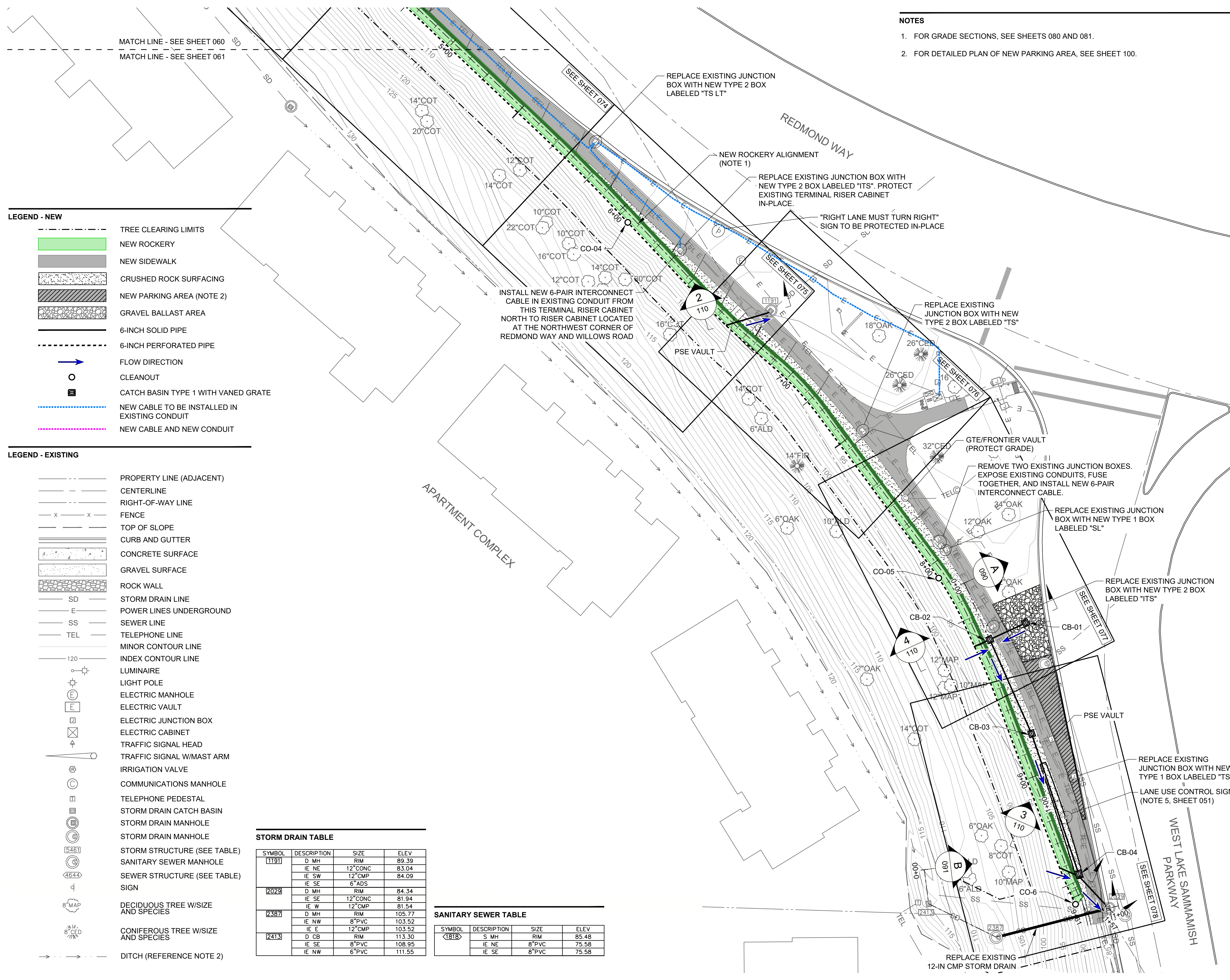
SYMBOL	DESCRIPTION	SIZE	ELEV
1191	D MH	RIM	89.39
	IE NE	12"CONC	83.04
	IE SW	12"CMP	84.09
	IE SE	6"ADS	
2029	D MH	RIM	84.34
	IE SE	12"CONC	81.94
	IE W	12"CMP	81.54
2387	D MH	RIM	105.77
	IE NW	8"PVC	103.52
	IE E	12"CMP	103.52
2413	D CB	RIM	113.30
	IE SE	8"PVC	108.95
	IE NW	6"PVC	111.55

**SANITARY SEWER TABLE**

SYMBOL	DESCRIPTION	SIZE	ELEV
1818	S MH	RIM	85.48
	IE NE	8"PVC	75.58
	IE SE	8"PVC	75.58

**NOTES**

- FOR GRADE SECTIONS, SEE SHEETS 080 AND 081.
- FOR DETAILED PLAN OF NEW PARKING AREA, SEE SHEET 100.



**FINAL DESIGN  
DRAFT**

0      20      40  
1" = 20'      FEET

CLIENT  
**CITY OF REDMOND**

PROJECT  
**REDMOND WAY ROCKERY REPLACEMENT  
REDMOND, WASHINGTON**

REV. 9 of 25

CONSULTANT  
**GOLDER**

REDMOND  
18300 NE UNION HILL ROAD  
REDMOND, WA 98052  
USA  
[+1] (425) 883-0777  
www.golder.com

---

TITLE  
**SITE PLAN OVERVIEW (2 OF 2)**

PROJECT NO.  
**1403741903**

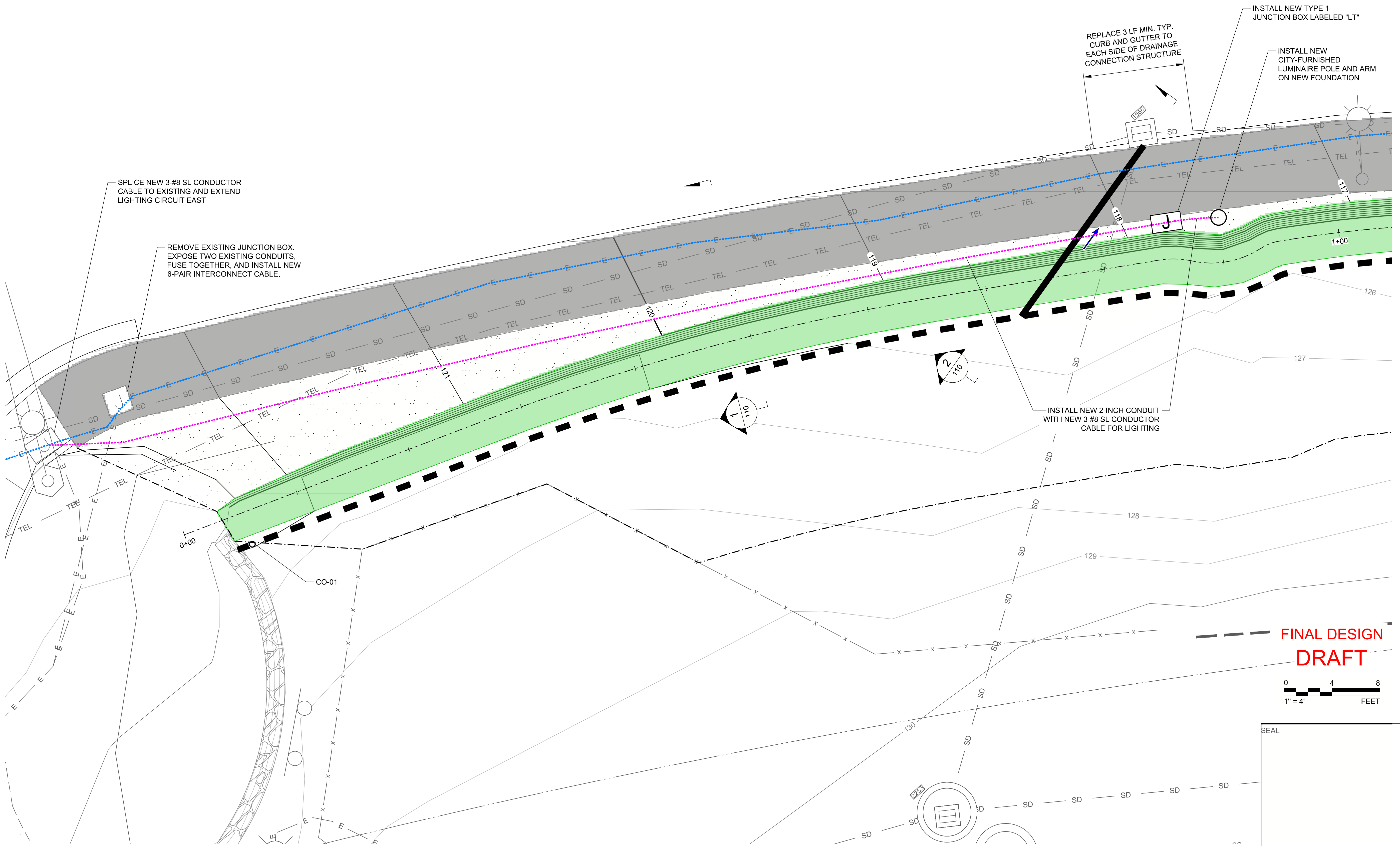
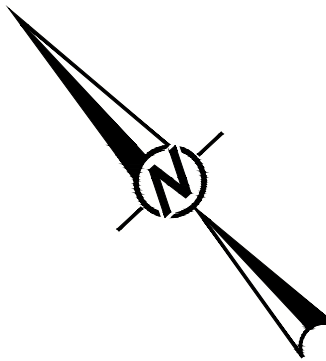
PHASE  
**008**

REV. YYY-MM-DD DESCRIPTION  
DESIGNED    REVIEWED    APPROVED

D	2020-06-12	FINAL DESIGN DRAFT FOR REVIEW	VMN	REDMOND	FSS	JU
C	2020-02-28	100% DESIGN	VMN	REDMOND	FSS	JU
B	2019-12-02	60% DESIGN	VMN	REDMOND	FSS	JU
A	2019-08-16	30% DESIGN	VMN	REDMOND	FSS	JU

1" IF THIS MEASUREMENT DOES NOT MATCH WHAT IS SHOWN, THE SHEET SIZE HAS BEEN MODIFIED FROM ANS1.

**NOTES**  
 1. SEE SHEET 060 FOR LEGEND.



SPLICE NEW 3-#8 SL CONDUCTOR CABLE TO EXISTING AND EXTEND LIGHTING CIRCUIT EAST

REMOVE EXISTING JUNCTION BOX. EXPOSE TWO EXISTING CONDUITS, FUSE TOGETHER, AND INSTALL NEW 6-PAIR INTERCONNECT CABLE.

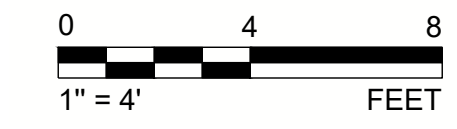
REPLACE 3 LF MIN. TYP. CURB AND GUTTER TO EACH SIDE OF DRAINAGE CONNECTION STRUCTURE

INSTALL NEW TYPE 1 JUNCTION BOX LABELED "LT"

INSTALL NEW CITY-FURNISHED LUMINAIRE POLE AND ARM ON NEW FOUNDATION

INSTALL NEW 2-INCH CONDUIT WITH NEW 3-#8 SL CONDUCTOR CABLE FOR LIGHTING

**FINAL DESIGN DRAFT**



SEAL

Path: \\redmond\golder\gis\matt\cable\redmond\redmondrockery\08\_Design\02\_PROD\02\1903\_1903\_008\_007.dwg | Last Edited By: vrayner | Date: 2020-08-11 | Time: 5:46:46 PM

REV. D	2020-06-12	FINAL DESIGN DRAFT FOR REVIEW	VMN	REDMOND	FSS	JU
C	2020-02-28	100% DESIGN	VMN	REDMOND	FSS	JU
B	2019-12-02	60% DESIGN	VMN	REDMOND	FSS	JU
A	2019-08-16	30% DESIGN	VMN	REDMOND	FSS	JU
REV.	YYYY-MM-DD	DESCRIPTION	DESIGNED	PREPARED	REVIEWED	APPROVED

CLIENT	CITY OF REDMOND
CONSULTANT	REDMOND 18300 NE UNION HILL ROAD REDMOND, WA 98052 USA [+1] (425) 883-0777 www.golder.com
PROJECT	REDMOND WAY ROCKERY REPLACEMENT REDMOND, WASHINGTON
TITLE	SITE PLAN - STA 0+00 TO 1+04
PROJECT NO.	1403741903
PHASE	008
REV.	10 of 25
SHEET	070

1 in. IF THIS MEASUREMENT DOES NOT MATCH WHAT IS SHOWN, THE SHEET SIZE HAS BEEN MODIFIED FROM ANS/D