

# REDMOND »»» 2050

## Land Use and Community Design

---

March 7, 2023



# Agenda

- Introduce community conversations related to land use
- Introduce idea of Community Design Element

## **Objective:**

Identify questions and interests for March 14 study session

# Land Use: What We Are Asking

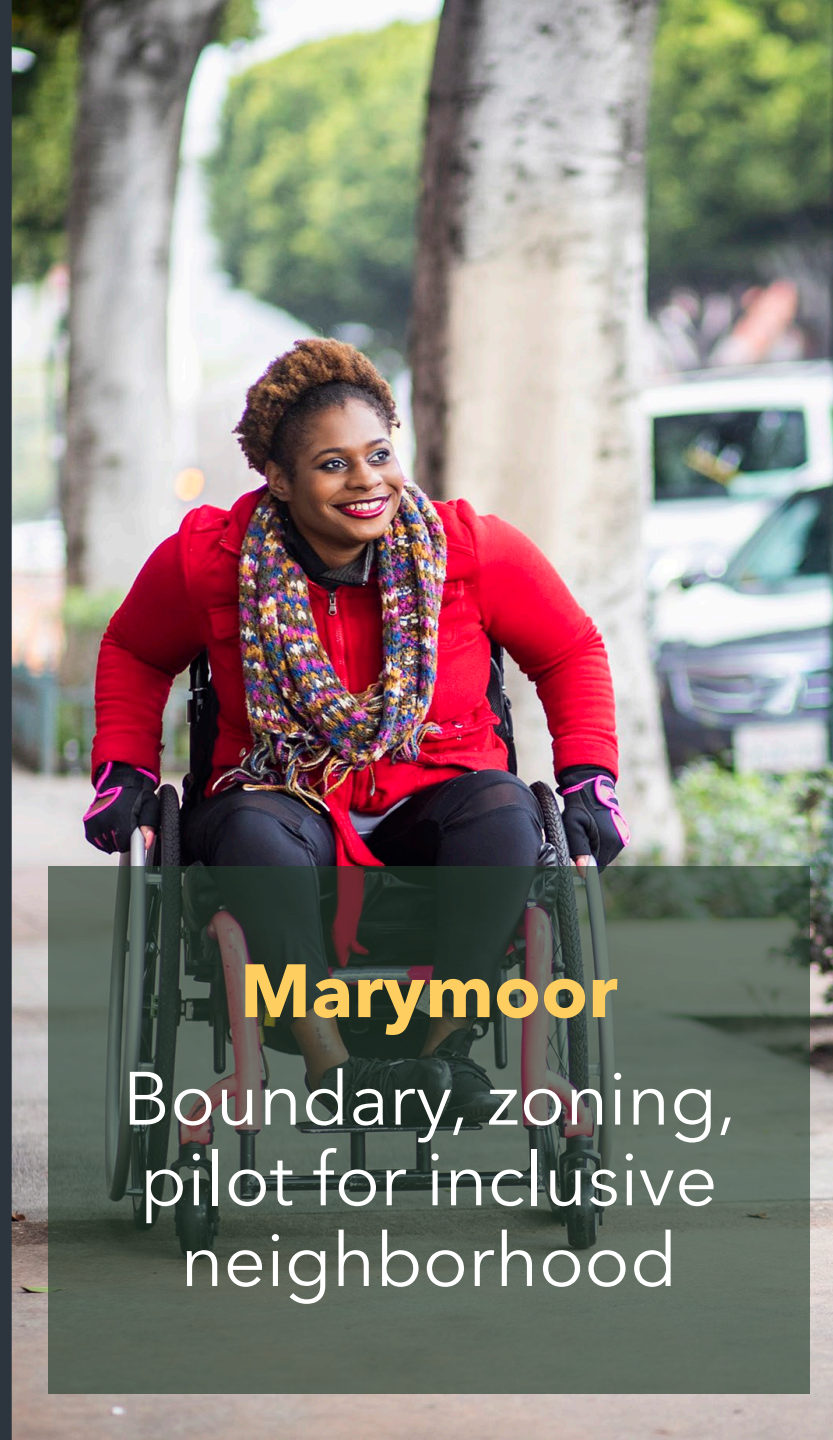
Timing	Topic	Key Audiences	What are we asking?
Q1	<b>Light Rail Station Accessibility</b>	People with disabilities People who walk, bike	What barriers do you face accessing stations in Overlake?
Q1-Q2	<b>Overlake Code Revisions</b>	Property owners, Developers City Council,	What works/doesn't work? What are your highest priorities?
Q1-Q2	<b>SE Redmond</b> (Industrial Center & Corridor Planning)	Manuf./Ind. businesses, Employees Property owners Residents, Commuters	What do you need in zoning to be successful? MP Overlay and BP Housing Proposals Corridor planning (land use, transportation, etc.)
Q1-Q2	<b>Marymoor Village</b>	Tribes People who would benefit from universal design Property owners, Developers	How could tribal culture be recognized? What elements are important to you? What works/doesn't in code?
Q2-Q3	<b>Downtown</b>	Community Developers	What elements of design are important? What works/doesn't in code?
Q2-Q3	<b>Community Design</b>	Community Developers	Information about reorganizing design-related policies
Q2-Q3	<b>Complete Neighborhoods</b>	Community	What elements are important to you?





## **Downtown**

Offices, nightlife,  
building design &  
height, zoning



## **Marymoor**

Boundary, zoning,  
pilot for inclusive  
neighborhood



## **SE Redmond**

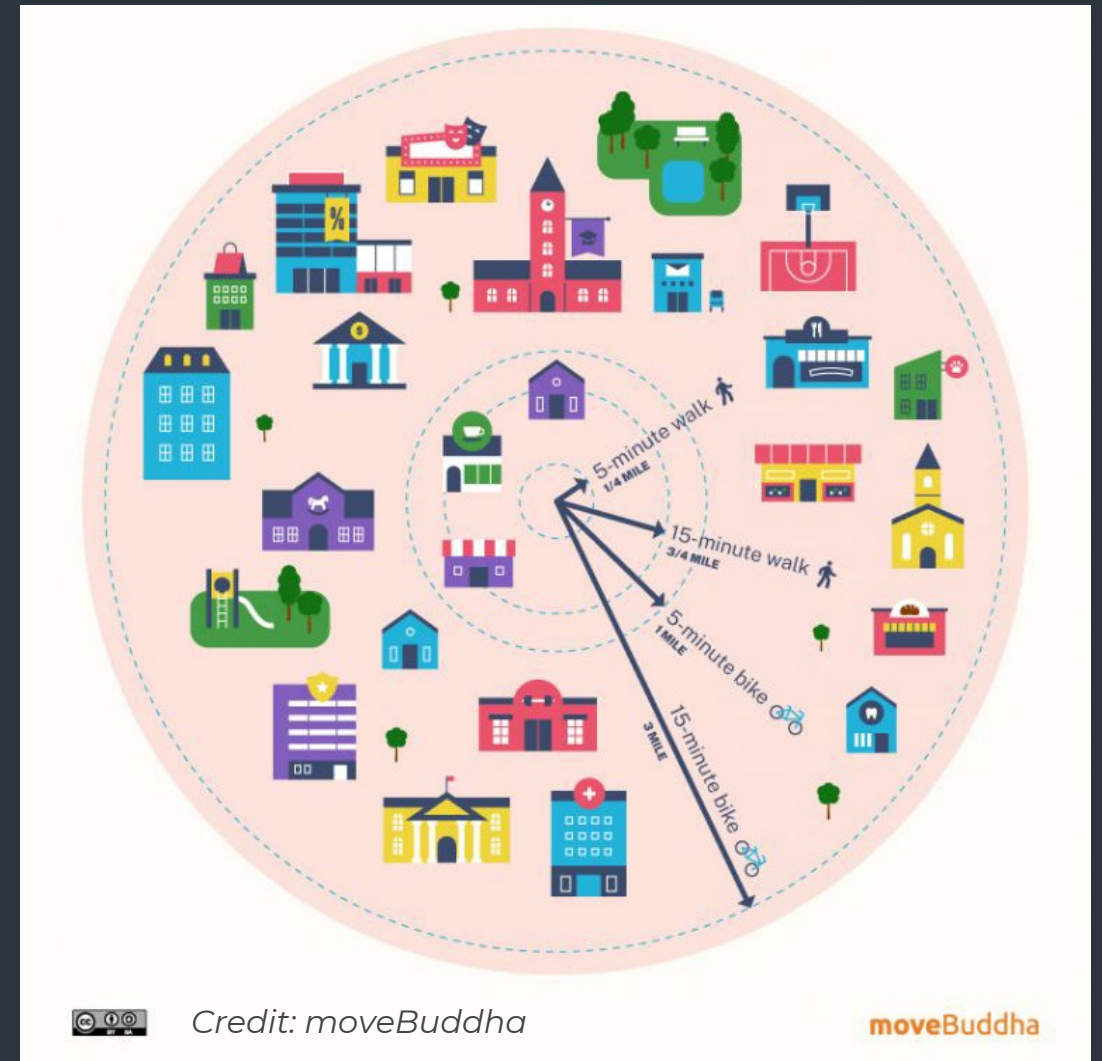
New center, business  
retention, Redmond  
Way corridor



# What is a complete neighborhood?

*A neighborhood where most human needs and many desires are located within a comfortable walking distance.*

- Sometimes a biking distance is applied
- “Neighborhood” and “city” are both used in various definitions







## Home-Based Businesses

Consider updates that make it easier to start or expand a home-based business



## Repurposing Residential Structures

Business operating out of formerly residential structure



## Commercial Clusters

Neighborhood-scale businesses in clusters or corridors

# Community Design Discussion Purpose

*To guide updates to Land Use and Community Character and Historic Preservation Elements.*

- Shift from community and neighborhood “character” to a focus on *design*
- “Community Design” element that combines topics from several chapters and allows for additional design-related policy discussions

# When “Character” is Exclusionary

---

## Redmond Example One

Neighborhood allows several types of housing, but...

- Have a minimum percentage of housing required to be detached single-family (SF)
- Requires all housing units to have the same look and feel as SF
- Requires minimum spacing between non-SF developments

## Redmond Example Two

Neighborhood development standards require large setbacks and specific, high-cost landscaping within setbacks





## Community Design Element

- **Consolidate** design related policies  
(from Centers, Land Use, Neighborhoods and Design chapters)
- Unify policies that impact how Redmond feels, looks, or sounds
- Establish policies related to inclusive design
- Update/expand design-related policies for centers, corridors, and other neighborhoods
- Address design of buildings and public realm in cohesive manner





## Policy Updates

Options for  
character / design  
policy updates



## Equity in Our Built Environment

Accessible, safe, and  
comfortable for all  
ages and abilities



## Suburban to Urban

Expanding options,  
increasing flexibility,  
and streamlining  
code



# Next Steps

## **Tonight**

Identify Council questions and interest related to these topics for discussion at study session

## **Mar. 14 Study Session**

Understand Council interests and prioritize so that staff work can be responsive to them

## **Q2-Q3**

Community engagement on these topics

REDMOND  
 2050



# Thank You

---

