

Community Facilities District 2016-1 Update

May 5, 2026

Micah Ross, Senior Engineer





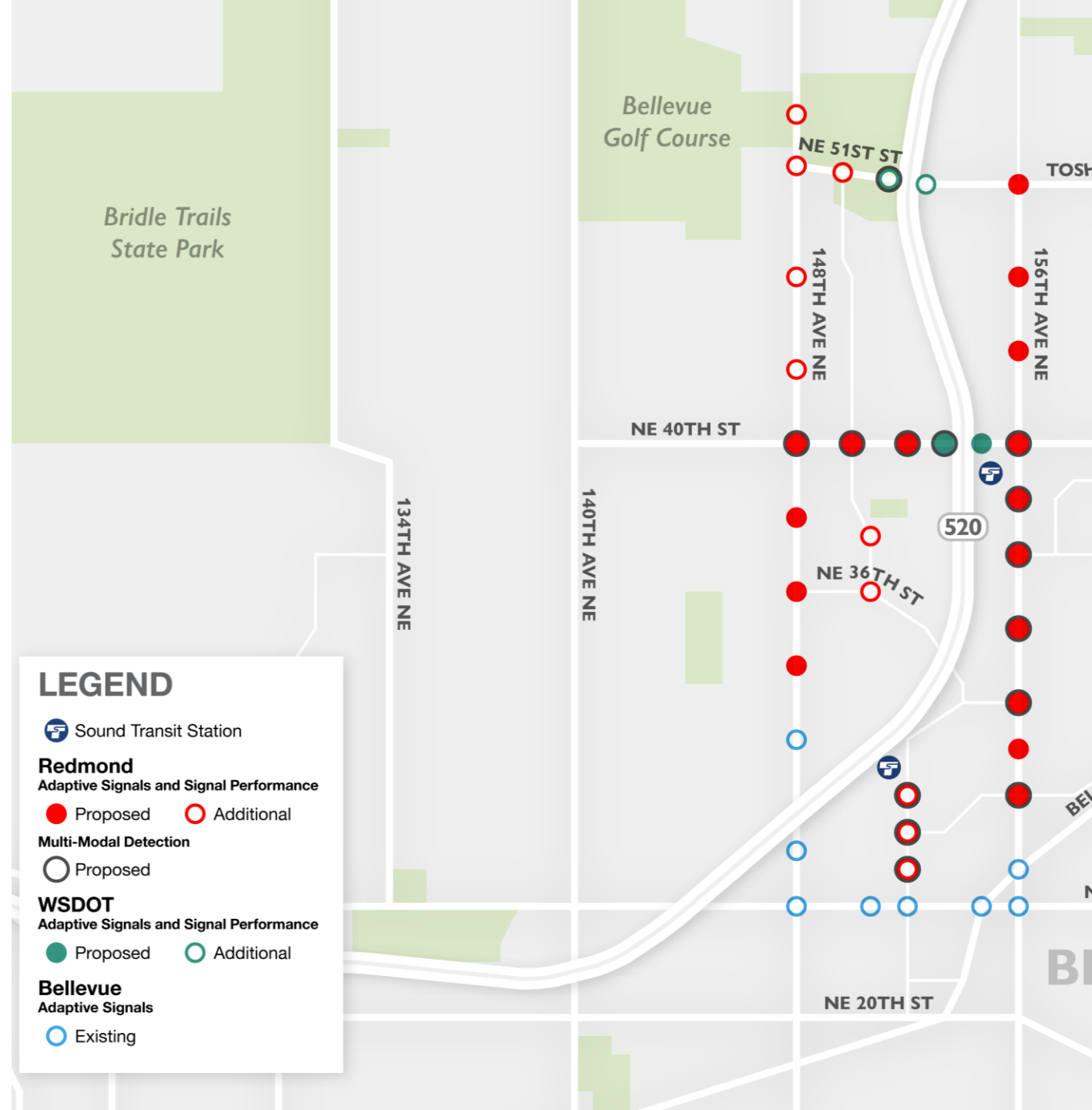
40th Street Shared Use Path

(163rd Ave to 172nd Ave)

- Design consultant is developing alternatives for path alignment and roadway cross sections
- Balancing tree preservation with utility conflicts, walls, etc.

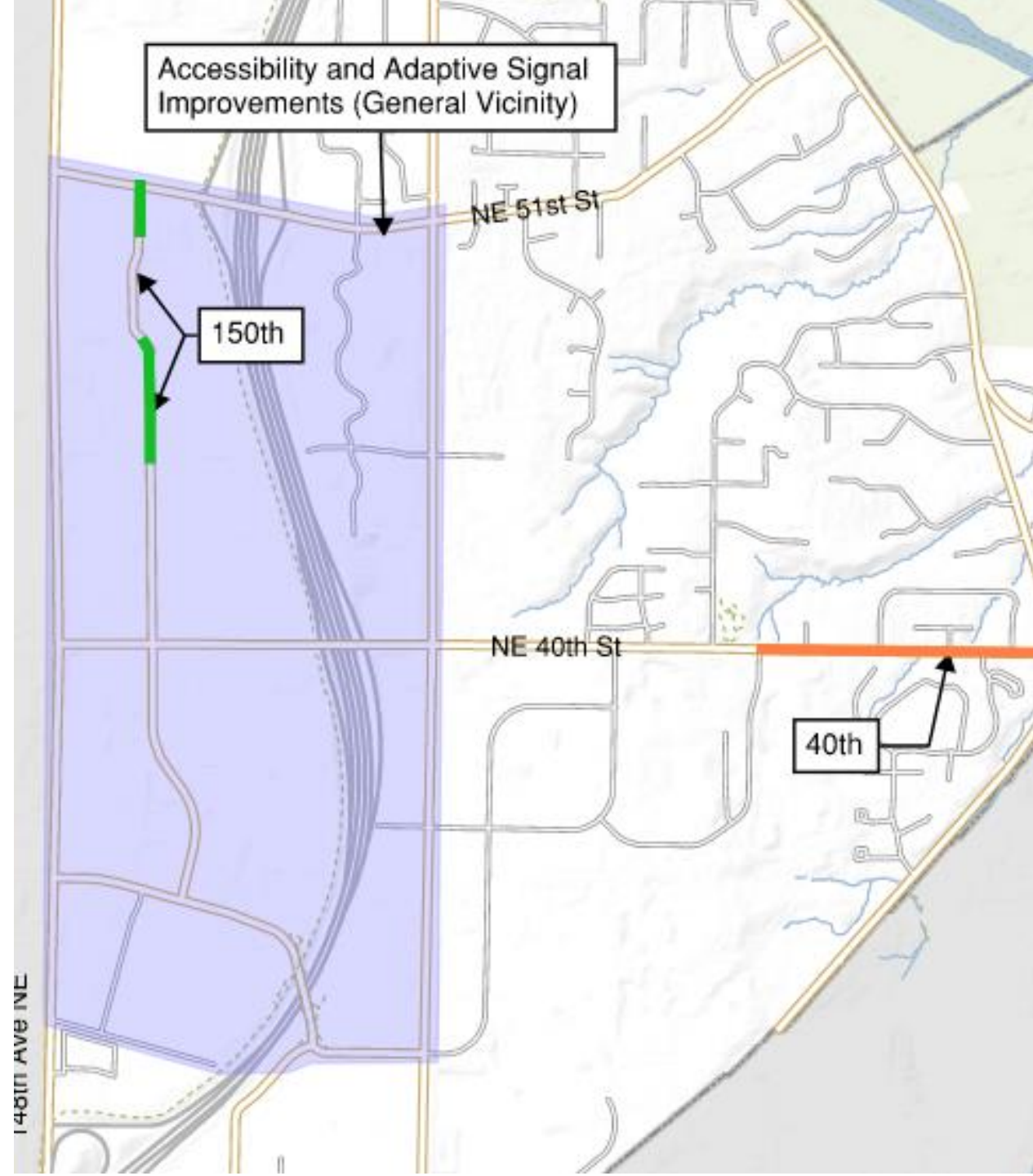
Overlake Adaptive Signals

- The project is scheduled to kick off in Q4 2026
- Adaptive signal and multi-modal detection technologies to be deployed along key corridors
- System will provide performance measures to help monitor overall system health



Overlake Accessibility

- Project has preliminary scope defined
- Working on getting a project manager assigned and beginning design



150th Ave Improvements

- Widen roadway to add bicycle lanes in both directions
- Address sight distance at curve
- Begin design fall 2026
- Will incorporate crossing requested by CBRE near Building 126



Thank You

Any Questions?

