

STARCHASE

GPS SOLUTIONS FOR PUBLIC SAFETY

REDUCE RISK. SAVE LIVES. PROTECT COMMUNITIES.

ABOUT STARCHASE



- Private Corporation - HQ in Virginia Beach, VA.
- Specialize in GPS technology solutions for Law Enforcement and Public Safety/Security sectors.
- Patented - sole source GPS solutions provided exclusively in the entire US and numerous countries around the world.
- Our team is comprised of prior L/E Officers, DoD Veterans, Certified I/T & Mechanical Engineers and former Fortune 500 professionals.

PRODUCT SUITE

GUARDIAN-VX
VEHICLE MOUNTED LAUNCHER

GUARDIAN-HX
HAND-HELD LAUNCHER

COREVIEW[®]
REAL-TIME MAPPING

APPTRAC[®]
MOBILE TRACKING APPLICATION

SLIPSTREAM[®]
VEHICLE TRACKING SYSTEM



DE-ESCALATION TOOLS



INCREASE OFFICER
SAFETY



REDUCE
RISK



REDUCE
LIABILITY



SAFE
APPREHENSION

OUR MISSION: REDUCE RISK, **SAVE LIVES**, PROTECT COMMUNITIES.



GUARDIAN-VX

VEHICLE MOUNTED LAUNCHER

GUARDIAN-VX

VEHICLE MOUNTED LAUNCHER



VEHICLE LAUNCHER UNIT

- Rugged GPS Tag & Track System
- Dual Barrel
- GPS Tag Deployment Speed: 26 MPH (38 fps)
- Range: 18-20 Feet
- NIJ Certified – Less-lethal



OPERATOR CONSOLE

- Simple User Operation
- Audible & Visual Cues for 'eyes up operation'
- Arming Time: 15-30 seconds
- Console Fire Button
- Remote Fire - FOB
- Two GPS Tags
- System will auto-shutdown if unattended



Edited by PowerDirector



2021-03-29 11:15:10Z
AXON FLEET 2 X54107534



X – FACTOR



0
Injuries
Fatalities

10,000+
Tags
Deployed

85%+
Apprehension
Rate

2,000+
Auto-Theft
Recoveries

\$150M+
Asset
Recoveries

Data collected from case studies and individual agency-shared data (2015 to present)

X - Benefits



- De-escalate high-risk vehicle events
 - Suspect speed within 10 Mph of posted limit w/in 2 minutes
 - Physiological impact: less pressure/adrenalin
 - Deliberate tracking: short-term, exigent circumstances
 - Appropriate resource planning / coordination
 - Cross-jurisdictional functionality
 - Controlled environment for apprehension
-



AGENCY SNAPSHOT

2014 without StarChase

187 Pursuits – 98 Terminated

53% apprehension rate

2015 without StarChase

235 Pursuits – 136 Terminated

45% apprehension rate

2016- StarChase Added to Policy

301 Pursuits – 154 Terminated

90% apprehension rate

2017- StarChase Added to Policy

87 Pursuits – 49 Terminated

82% apprehension rate

**Independence, MO PD Performance Data Presented to IACP*

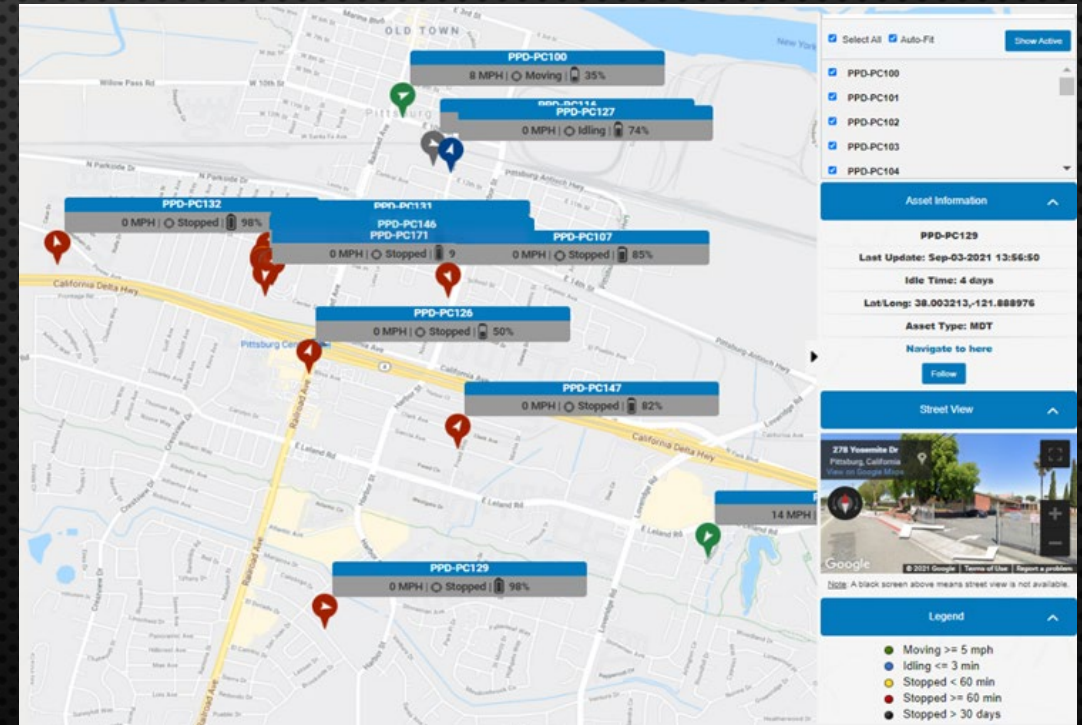


COREVIEW^{RTM}

REAL-TIME MAPPING

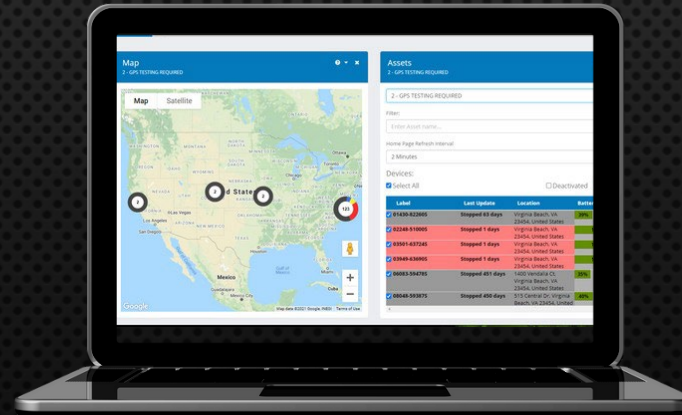
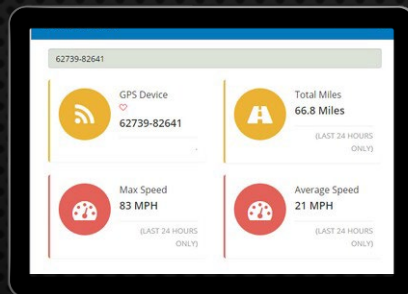
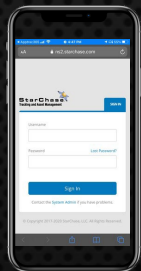


- Secure Login access
- See assets in single or layer views
- Real-Time with historical playback
- Court Admissible
- Layered map views such as satellite, map, street, traffic, POI, etc
- Gov Cloud Certified
- API integration available upon technical review





ANY DEVICE

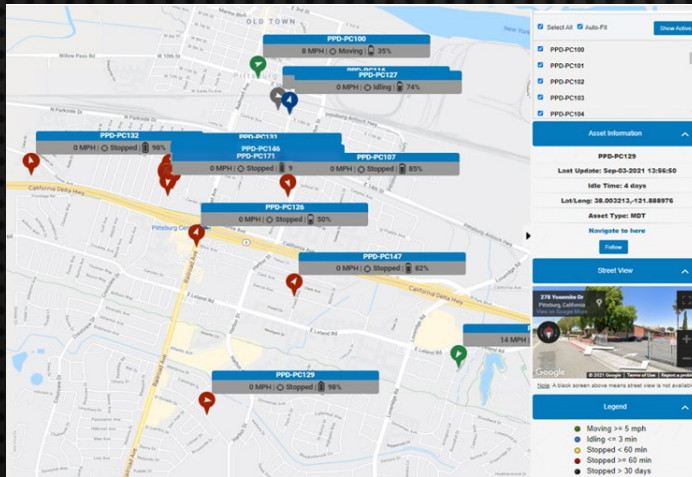


API INTEGRATION



Integrate LPR's, CAMS, SHOTSPOTTER, Other Monitored Platforms

COREVIEW^{RTM}
REAL-TIME MAPPING





GUARDIAN-HX

HAND-HELD LAUNCHER

GUARDIAN-HX

HAND-HELD LAUNCHER



Compact Portability

NIJ Certified –Less Lethal

Precision Designed



Long Battery Life

20-35 ft. Range

Familiar Footprint

GUARDIAN-HX

HAND-HELD LAUNCHER



- OPERATION: Single Shot, Nitrogen powered
- BARREL CAPACITY: 1 Tag
- WEIGHT: 7.5 lbs.
- BARREL LENGTH: 5"
- OVERALL LENGTH: 27.75"max (24.5" stock-collapse)
- WIDTH: 3"
- HEIGHT: 13"
- VELOCITY: 37 MPH (54 fps)
- RANGE: Up to 30' (angled shot up to 60')
- TRIGGER PULL FORCE: 2 LBS (electronic)
- SIGHTS: Fixed, Red Dot
- SAFETY: Manual, Left Side
- BATTERY: Rechargeable unit, quick release
- EFFECTIVE: Favorable in broad environments & extreme climates



TAG

GPS round adheres to any target vehicle surface for all stationary or moving incidents.



TRACK

Unlimited viewing access of GPS location in real time from any web enabled platform.

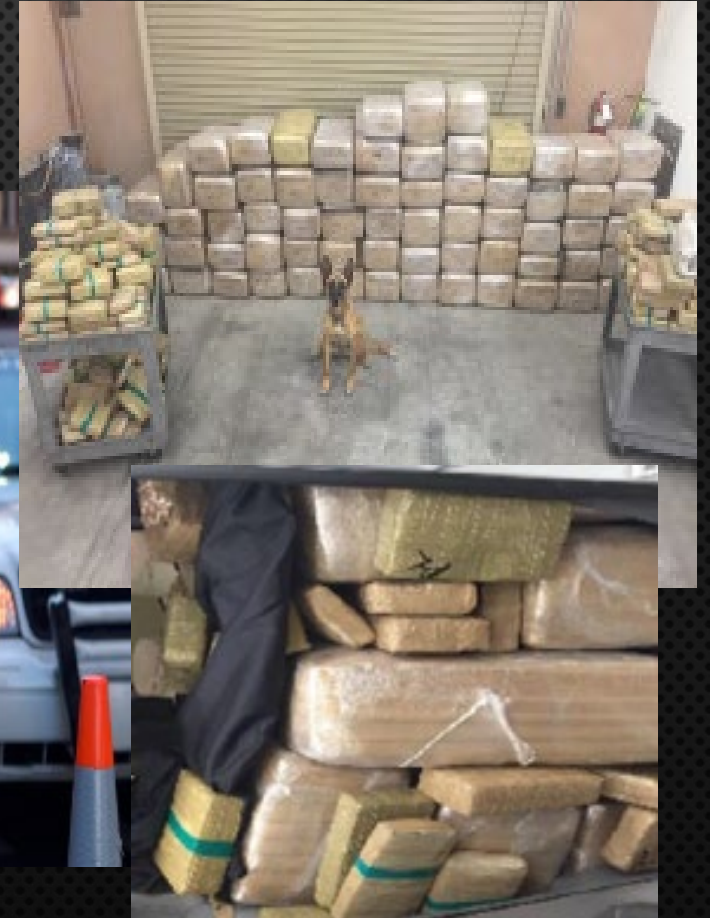


LOCATE

De-escalates critical incidents leveraging existing agency assets to execute a safe apprehension plan



- Auto Theft Recovery
- Special Operations
- Investigations
- Patrol Operations
- DUI/Security Checkpoint
- Arms & Narcotics Trafficking
- Human Trafficking & Smuggling





APPTRAC^{MTA}

MOBILE TRACKING APPLICATION



Leverage Existing Mobile Devices



Toggle “On-Duty” / “Off-Duty” for Privacy



Critical Incident Management/Visibility



Unparalleled Safety Benefits



Full Suite of Alerts and Reports



Real Time Incident Mapping with ‘pin drop’



View and Manage Your AppTrac-365 Assets via CoreView RTM

Keep track of your most important assets and improve response time

Mobile Tracking Application with multi-functional capabilities using StarChase's CoreView Real-Time Mapping Platform

- **Real-Time On-Duty Tracking**
- **Leverage existing cell phones**
- **Foot & Vehicle Based Patrol**
- **Bicycle & Cycle Patrol**
- **Task Force Visibility**
- **Coordinated Emergency Response**
- **Civil Unrest/Protest/Active Shooter**





SLIPSTREAM^{VTS}

VEHICLE TRACKING SYSTEM



Vehicle Tracking Application with multi-functional capabilities using StarChase's CoreView Real-Time Mapping Platform

- 360° visibility on field assets and surroundings
- Advance Reporting & Alerts
- Detailed reporting and dashboards
- Instant messaging on critical events happening in real-time.
- Cost Effective - No additional equipment required
- Leverage existing infrastructure and equipment
- Fully Integrated complete vehicle tracking system

