

# Update on Sound Transit Light Rail in Redmond

---

October, 15 2024



# Purpose

- Downtown Redmond Light Rail Extension Update





# Roadmap Timeline

*We are here*



**Pre-revenue Service begins**

Testing and commissioning of rail system.

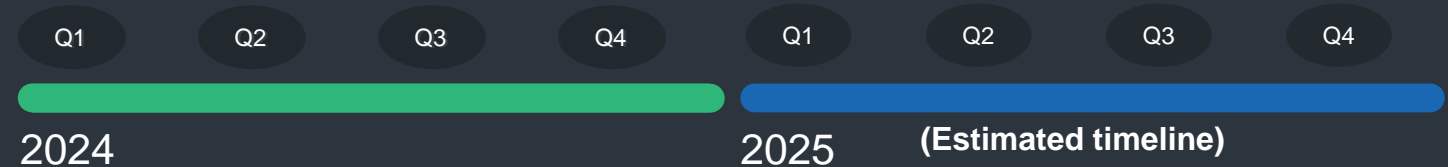
**Construction complete**

**Revenue Service begins**

Light Rail is open to the public with service between Redmond and Bellevue



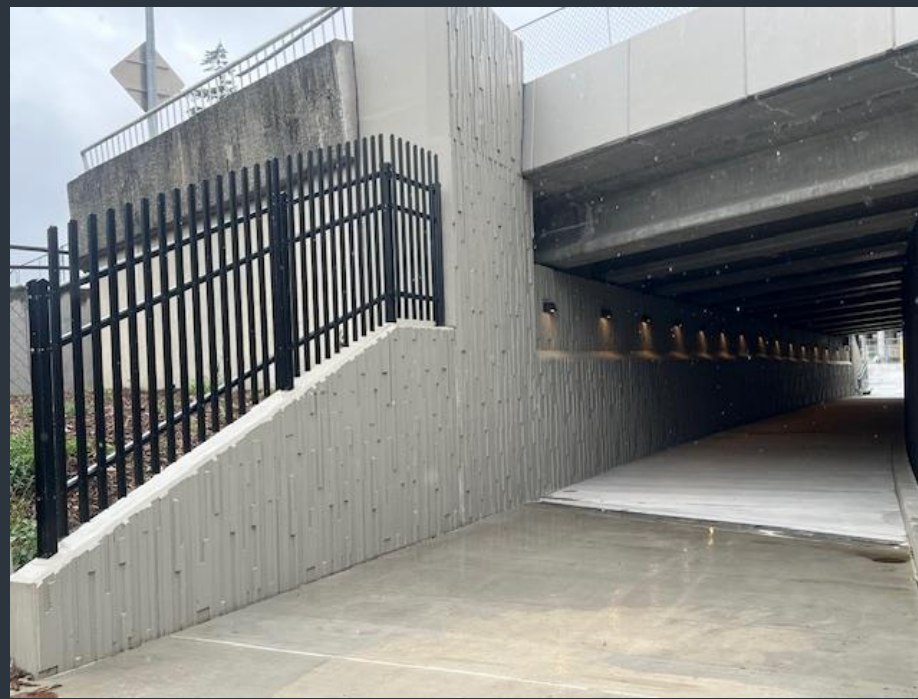
*Service to Seattle begins*  
*(estimated)*



# Completed Project Milestones

---

- NE 40<sup>th</sup> Street Underpass was opened to the public
- Final paving at NE 70<sup>th</sup> St, Cleveland St, , NE 60<sup>th</sup> St, and NE 76<sup>th</sup> St.



40<sup>th</sup> Underpass Entrance



Paving at NE 76 ST

# Up Coming Milestones Q4

---

- Redmond Central Connector (RCC) opens to the public.
- Street work substantially complete throughout Redmond.
- Opening of the East Lake Sammamish Trail extension from Marymoor Park to the RCC.
- Pre-revenue service begins.



Marymoor Station Garage



Redmond Central Connector



Concrete repairs at ESLP



Concrete repairs at NE 60<sup>th</sup> St

# City coordination with Sound Transit

---

- Concrete repairs at NE 60<sup>th</sup> St and East Lake Sammamish Parkway
  - Sound Transit and SWK completed concrete repairs at the request of the City that were outside of their construction limits without additional costs.
- Partnering for project closeout
  - The City, Sound Transit, SWK, and other project stakeholders met to develop a framework for the administrative and physical closeout of the project. This framework will provide a smooth and timely transition to operational service.



# Thank You



Any Questions?

