

# Moving Toward 2050

## Transportation Master Plan Status Update

.....  
Transportation Planning and Engineering Division  
August 5, 2024  
Staff Report





# Agenda

- Outline and schedule of Transportation Master Plan (TMP)
- TMP Chapters in Progress
- Community Engagement Timeline
- Upcoming Milestones

# 2050 Transportation Vision



## Guiding Principles

*Safety*



*Equity and Inclusion*



*Sustainability*



*Technology Forward*



*Resilience*



## Transportation Strategies

Organize around light rail

Maintain transportation infrastructure

Improve travel choices and mobility

Enhance freight and service mobility


# Change Driven by Comprehensive Plan

REDMOND  
2050

Comprehensive (COMP) Plan - Adopts Vision for the City							
 Transportation	 Housing	 Parks, Arts & Culture	 Public Safety	 Utilities	 Capital Facilities	 Neighborhoods	 Human Services
 Economic Vitality	 Urban Centers	 Land Use	 Natural Environment	 Shorelines	 Historic Preservation	 Annexation & Regional Planning	 Implementation & Evaluation

Typically updated every 8-10 years, amendments throughout the year



Functional & Strategic Plans - Defines How Vision will be Implemented								
 TRANSPORTATION	 Urban Centers & Neighborhoods	 Utilities	 ADA / Accessibility	 Environment & Sustainability	 Housing & Human Services	 Public Safety & Emergency Preparedness	 Facilities	 Parks & Trails

**Transportation Master Plan (TMP)**, typically updated every 8-10 years, last major update 2013



Community Involvement



Environmental Review

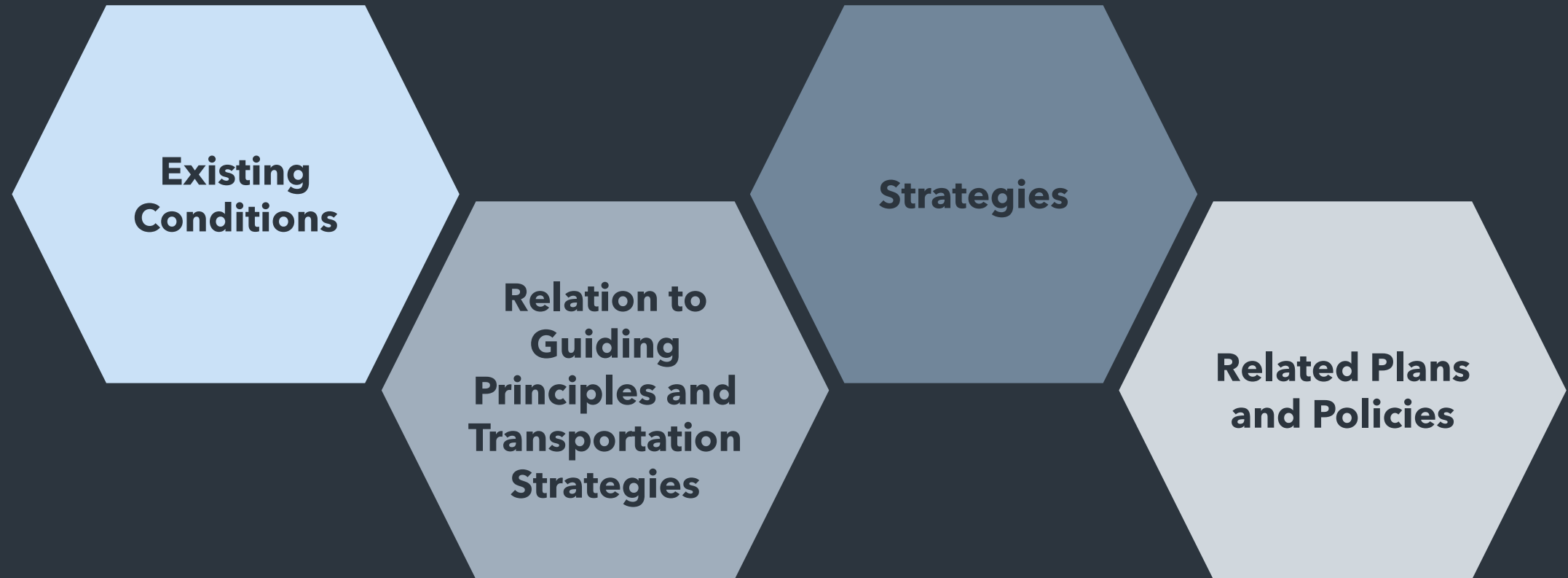
# Transportation Master Plan Outline



## Chapters:

1. Executive Summary
2. Introduction
3. Street System Plan
4. Active Transportation Plan - Walking
5. Active Transportation Plan - Bicycling
6. Transit System Plan
7. Curbspace Management
8. Freight and Goods Delivery Plan
9. Transportation Demand Management
10. Technology Forward
11. Monitoring Progress

# General Chapter Overview



# Additional Transportation Planning Efforts



## Completed

Local Road Safety Plan

Bicycle Design Guide

## In Progress

Safer Streets Action Plan

Technology Inventory and  
Assessment

2023-2050 Transportation  
Facilities Plan (TFP)

Ongoing Transportation  
Demand Management  
(TDM) Activities

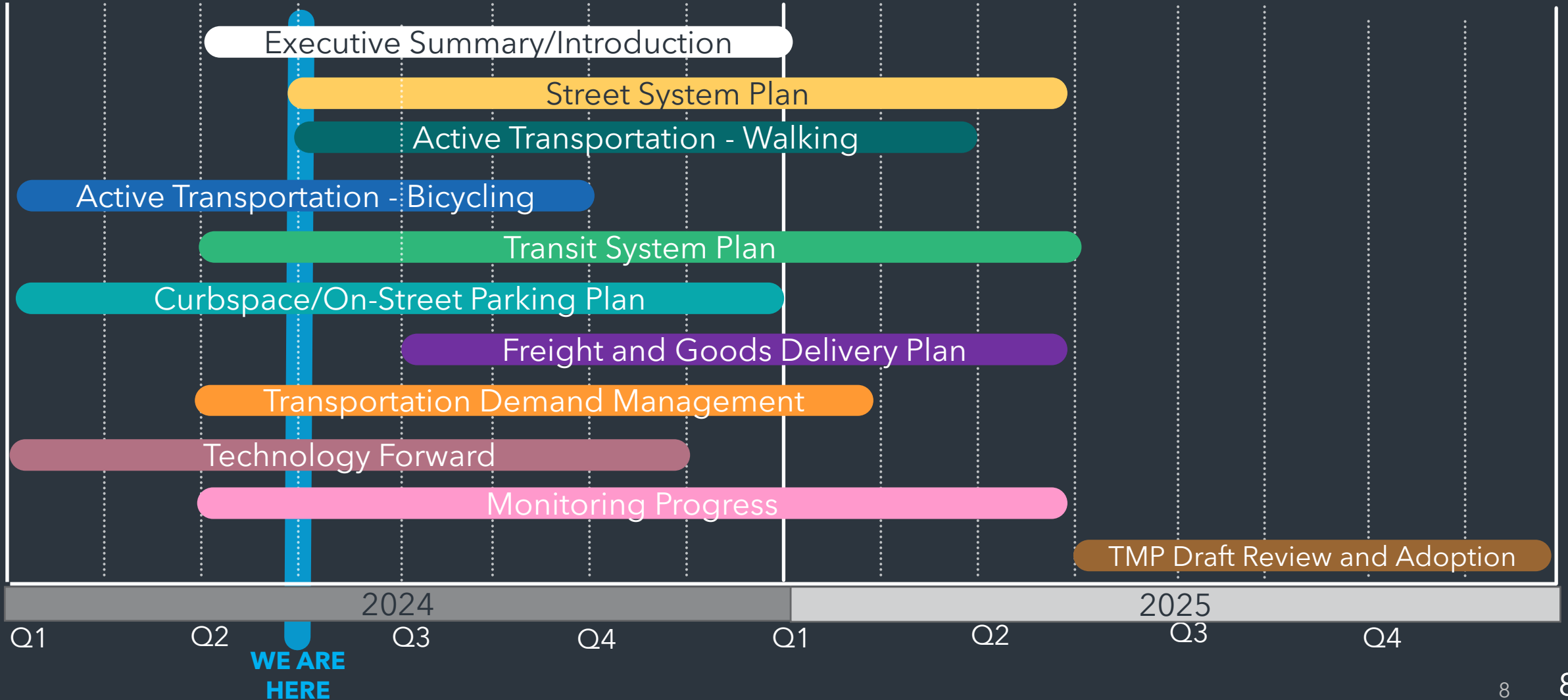
## Not Started

ADA Transition Plan

Citywide Right of Way  
Management Plan

Urban Centers Parking  
Management Plans

# Transportation Master Plan Schedule





# Active Transportation Plan - Bicycling



- Developing an investment scenario that will align with the City's goals for reducing Vehicle Miles Traveled (VMT) and Green House Gas (GHG) emissions
- Focusing on converting shorter vehicle trips to bicycle mode
- Developing e-bike strategies



# Curbspace Management



- Establishing a policy for prioritizing curbspace
- On-street parking managed as a component of curbspace
- Defining policies that will inform urban centers parking plan update/development

# Active Transportation Plan - Walking

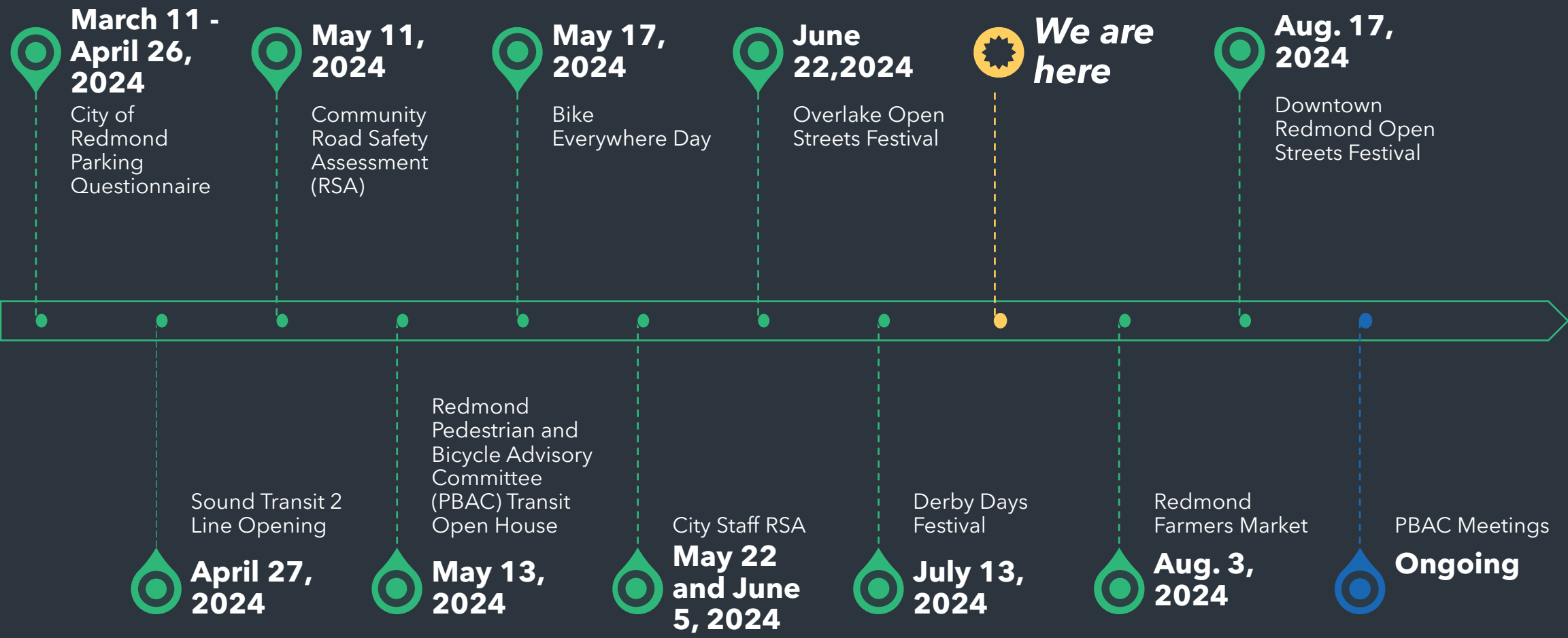


- Completing gaps in existing pedestrian network
- Pedestrian level of traffic stress assessment of crossings, identify crossing gaps, establish policies for installing enhanced, low stress crossings
- Provide framework for alternative approaches to creating pedestrian connections





# Ongoing Community Engagement





# Initial Community Feedback

## What have we asked?

- What safety concerns do you see around light rail station areas?
- What barriers prevent you from using transit, including light rail?
- How do you travel in Redmond, when not in a car?

## What have we heard?

- More first/last mile connections
- More pedestrian and bicycle connections to transit
- More bicycle infrastructure connecting Redmond to neighboring Kirkland and Bellevue
- More information about public transit programs, especially King County Metro Community Van and Metro Flex

# Community Feedback



## What are we asking now?

### Light Rail Station Access

- How do/would you travel to the Redmond light rail stations?
- What travel modes do/will you use when accessing light rail stations?
- What challenges do you face?

### E-Bike Usage

- How many households in Redmond own e-bikes?
- How are people in Redmond utilizing e-bikes?
- How would people like to see Redmond's bike infrastructure updated to support more e-bike usage?
- How can we encourage more bike and e-bike usage in Redmond?



# Next Steps

- Continuing to Develop TMP Content
- Upcoming Council Touchpoints:
  - Aug. 13 Study Session – focus on Safer Streets Action Plan
  - November Staff Report – focus on TMP Update
- Safer Streets Action Plan Draft ready for Council input in Q1 2025



# Questions?

---

Michael Hintze, [mhintze@redmond.gov](mailto:mhintze@redmond.gov)

Transportation Planning Manager

