

# Update on Sound Transit Light Rail in Redmond

---

February 21, 2023

Vangie Garcia, P.E., PMP

Transportation Planning and Engineering Manager





# Purpose

Provide East Link and Downtown Redmond Link Extension Project updates

- Current status of civil work
- Construction transitioning to working on track work

# Where Are We?

- **2006** - Environmental review began from Seattle to Downtown Redmond
- **2016** - Overlake construction began
- **2020** - Downtown construction began
- ➔ ● **2023** - Overlake stations construction complete
- **2025/2026** - Downtown extension opens



# East Link - E360

.....

- Sound Transit Board of Directors passed a resolution authorizing to continue exploring the East Link Starter Line
- Redmond Technology Station Garage repairs completed, bus loop opening targeted for March/April 2023





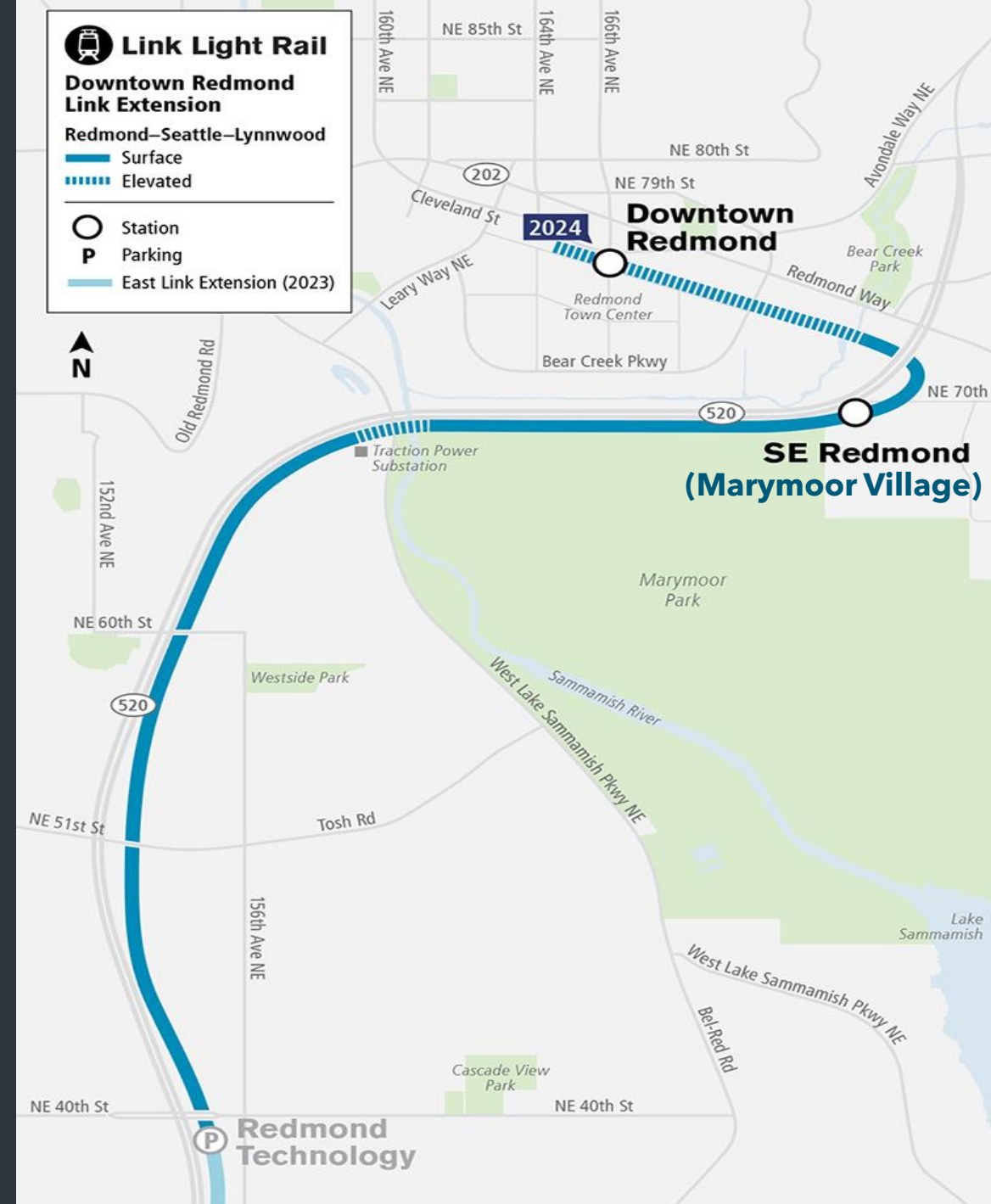


# Redmond Technology Station Bridge

- Construction approximately 95% complete
- Planting in progress

# Downtown Redmond Link Extension (DRLE)

- 63% completion for overall design-build progress
- Aerial guideway decks are complete
- Welding of track rail is underway





# DRLE Work Ahead

.....  
Construction activities for the next six months:

- Marymoor Village Garage will be topped off
- Marymoor Village Station ongoing
- Downtown Station and Plaza ongoing
- Train tracks installation ongoing
- Train Overhead Contact Systems (OCS) poles and wire installation started
- Other train systems work ongoing





# Marymoor Village Parking Garage

.....

- Level 6 construction is underway
- Garage will have 1,400 parking stalls



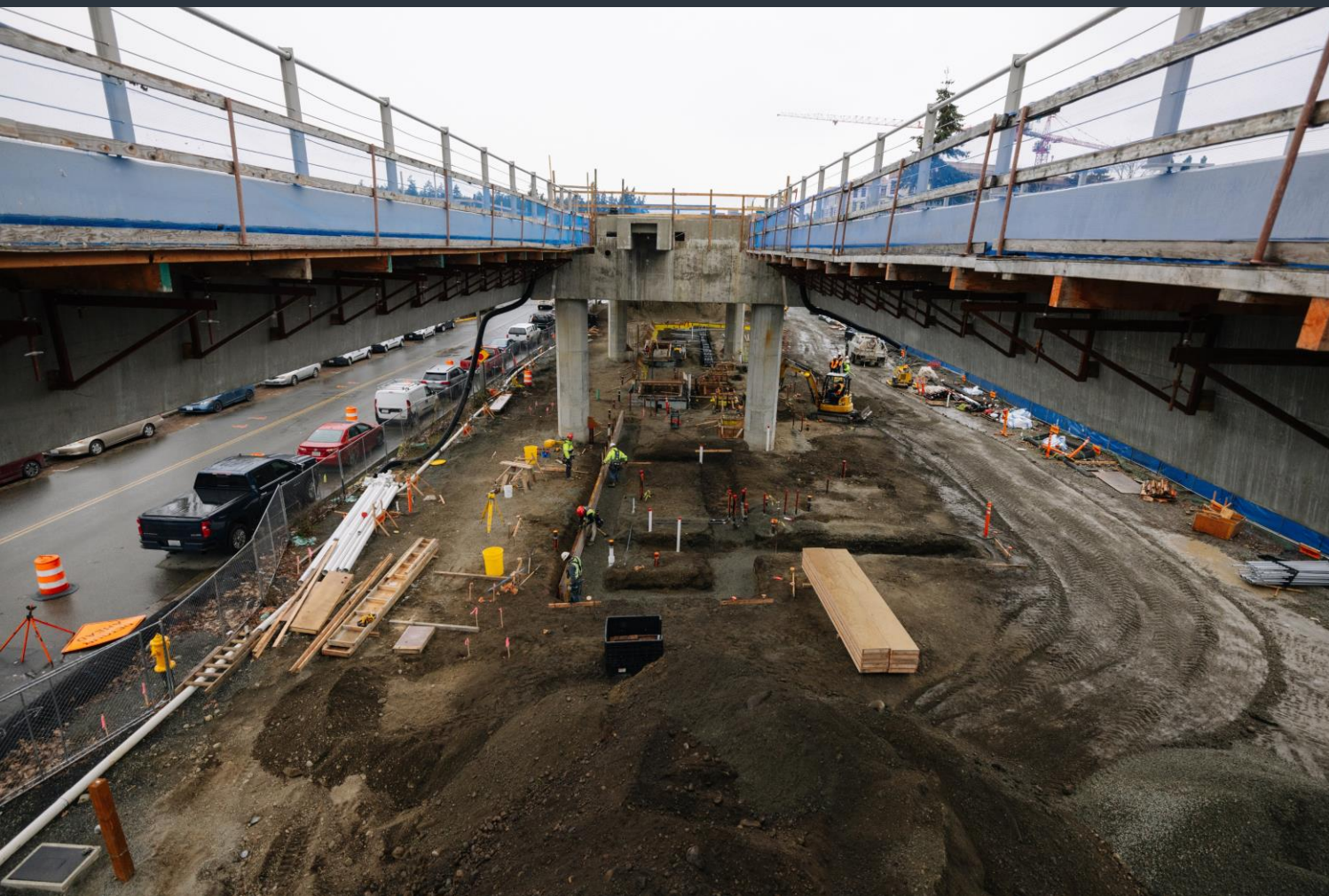


# Marymoor Village Station

.....

- Steel canopy on the station platform





# Downtown Station

.....

- Building structure for Downtown Station has begun
- Escalator/elevator is work underway





## Between Marymoor Village Station and Downtown Redmond Station

- Crews preparing to install train tracks for elevated guideway





## Between SR 520 and Marymoor Park

- For the elevated guideway parallel to SR 520 and over West Lake Sammamish Parkway, crews are constructing the plinths for the train tracks



# Thank You

---

Any Questions?

