



# CIP Quarterly Projects Update

---

Quarter 1, 2025



# Capital Division Portfolio Reporting

## 2025-2026 CIP

CIP Projects	2024 Q4	2025 Q1
Active	35	36

Completion	2025	2026
Targeted for Completion	18	9
Total Complete	2	0
Percent complete	11%	0%



# Completed & Soon to be Completed Projects

Project	Substantial Completion	Budget	Expected Cost	Comments
EV Charging	January 2025	\$734,334	\$700,000	
10,000 Block of Avondale Erosion	March 2025	\$4,091,986	\$3,500,000	
Control & Telemetry	April 2025	\$5,205,057	\$4,500,000	
PPE Management – Storage and Extractors	April 2025	\$505,000	\$535,000	~95% complete, project will finish over budget.
40 <sup>th</sup> St. Sidewalks (156 <sup>th</sup> Ave to Bel-Red Rd.)	May 2025	\$2,066,361	\$2,060,000	~80% complete, expected to finish on budget.
Overlake Station Vault - Stormwater Hatch	May 2025	\$155,000	\$170,000	
Pavement Mgmt. – West Lake Samm. Pkwy (N. of Marymoor to Leary Way)	June 2025	\$3,267,693	\$3,267,693	Construction will start in May





# Project & Program Reporting

.....

# Scope, Schedule & Budget Indicators

	Green ●	Yellow ●	Red ●
Scope	Scope OK	Some scope issues	Major scope issues
Schedule	On or ahead of schedule	1-3 months behind	Over 3 months behind
Budget	On or under budget (without contingency)	Within budget + contingency	Over budget + contingency

## Funding (Budget)

Funding number is budget as approved by Council; most recent number shown.



# Program Report - General Government (Facilities)

*Active projects managed by the Construction Division*

Program Manager: Quinn Kuhnhausen

Project Name	Phase	Targeted Completion	Project Standing	Budget	CIP Inclusion	Information
Electric Vehicle Charging Stations	Complete	January 2025	●	\$734,334	2023-2024	
PPE Management - Storage and Extractors	Construction	April 2025	●	\$505,000	2019-2020	
Fire Station 17 Siding Replacement	Construction	October 2025	●	\$1,119,620	2023-2024	
Sustainability LED Lighting Building Retrofit	Award	December 2025	●	\$741,187	2019-2020	
Sustainability Building Automation (Energy Management System)	Award	July 2026	●	\$506,408	2019-2020	
Public Safety Building Phase 2 (Mechanical and Electrical)	Award	July 2026	●	\$3,075,096	2017-2018	
Facilities ADA Improvements	Pre-Design	November 2026	●	\$300,000	2019-2020	
MOC Campus Redevelopment	Pre-Design	2030	●	\$225,000,000	2023-2024	Application for Progressive Design Build delivery approved.



Q. Kuhnhausen/A. Kim

# ADA Facilities Improvements (City Hall, PSB, FS 11, the Garage, RCCMV)

Project #: 2402    Project start: 2024    Pre-Design start: May 2024

Targeted completion: November 2026

Scope ●

Schedule ●

Budget ●

Total Project Budget: \$300,000

Phase	Project Funding*	Project Spending	Pre-Design Progress	
Pre-Design	\$300,000	\$52,944	<div><div></div></div>	55% Done 45% Remaining

## ➤ Project Progress

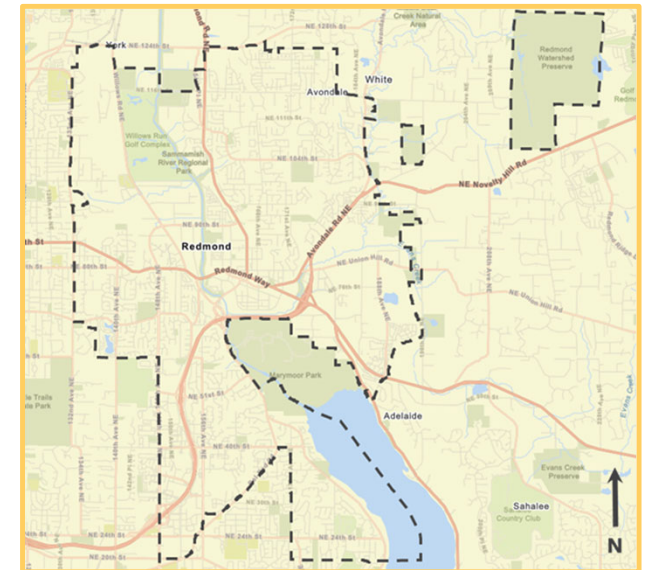
- Consultant completed the initial data analysis to prioritize and cluster improvements for five facilities

## ➤ Issues and Solutions for Yellow/Red Indicators

- No issues

## ➤ Key Upcoming Activities in the next month

- Start scheduling site visits for selected facilities



Funding Sources: General Fund

\* Project funding not broken into phases

# Program Report - Parks

*Active projects managed by the Construction Division*

Program Manager: Dave TucheK

Project Name	Phase	Targeted Completion	Project Standing	Budget	CIP Inclusion	Information
Redmond Central Connector Phs 3	Construction	August 2025	●	\$8,075,000	2019-2020	
Turf Replacement, Grass Lawn Park Softball Field 1	Award	October 2025	●	\$1,851,216	2019-2020	Cooperative purchasing agreement will be signed in May
Turf Replacement, Hartman Park Baseball Infield	Award	October 2025	●	\$599,245	2019-2020	Cooperative purchasing agreement will be signed in May
Reservoir Park Sports Court Replacement	Advertisement	September 2025	●	\$1,181,682	2019-2020	
Meadow Park Sports Court Replacement	Design	September 2025	●	\$593,910	2019-2020	Project will go out for bids in May

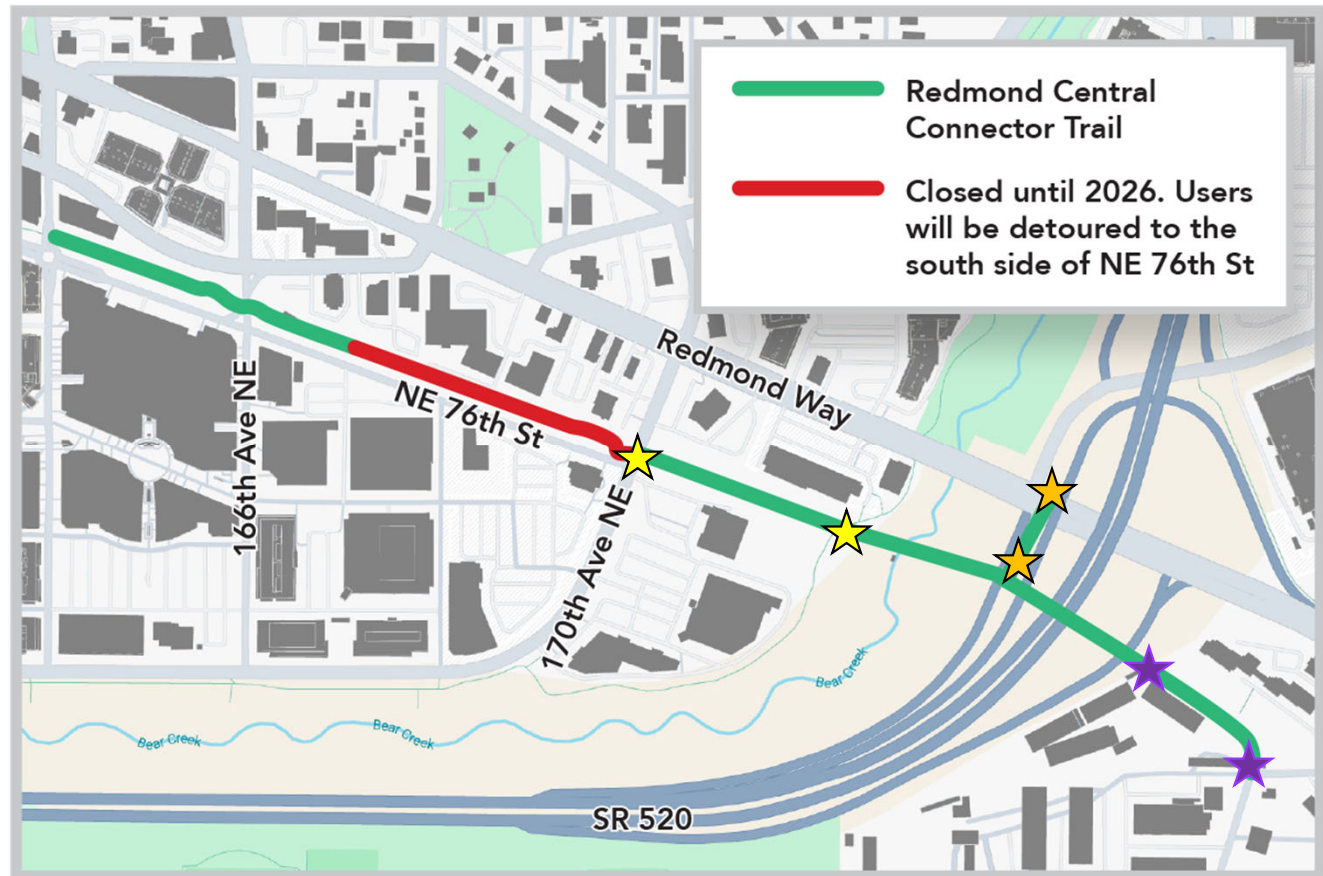




# Redmond Central Connector / EasTrail

- ★ The Central Connector Trail from the Bear Creek Trail to 170<sup>th</sup> Ave NE.
- ★ Connection to the walking and bike trail north to Union Hill Rd.
- ★ Connection to the East Lake Sammamish trail.

Opening May 10, 2025



# Redmond Central Connector Phase 3

Project #: 1915    Project start: 2021    Construction start: October 2024

Targeted completion: August 2025

Scope ●

Schedule ●

Budget ●

Total Project Budget: \$8,075,000

Phase	Construction Phase Funding	Construction Phase Spending	Construction Progress	
Construction	\$4,990,760	\$1,346,330	<div> <div style="width: 40%;"></div> <div style="width: 60%;"></div> </div> <div> <div style="width: 40%;"></div> <div style="width: 60%;"></div> </div>	

## ➤ Project Progress

- Contractor installing conduit for lighting and fill for new trail connections
- Work on concrete at intersection this month

## ➤ Issues and Solutions for Yellow/Red Indicators

- Long lead items such as signal poles will not be delivered until June

## ➤ Key Upcoming Activities in the next month

- Electrical conduit installation continues.
- Work on trail paving in April



Funding Sources: Grants, Impact Fees, PSE

# Program Report - Traffic Operations

*Active projects managed by the Construction Division unless otherwise noted*

Program Manager: Paul Cho

Project Name	Phase	Targeted Completion	Project Standing	Budget	CIP Inclusion	Information
Pavement Management -West Lake Samm Pkwy (Marymoor - Leary Way)	Construction	June 2025	●	\$3,267,693	2019-2020	Active construction will begin in May
Pavement Management - NE 24 <sup>th</sup> St. (WLSP - 172 <sup>nd</sup> Ave.)	Design	August 2026	●	\$14,443,553	2017-2018	Project involves extensive underground utility work.
Pavement Management - 154 <sup>th</sup> Ave NE (Redmond Way - 85 <sup>th</sup> St.)	Pre-Design	October 2026	●	\$1,688,026	2023-2024	
Pavement Management - Avondale Rd. (90 <sup>th</sup> St. - Novelty Hill Rd.)	Pre-Design	September 2027	●	\$11,366,766	2019-2020	Project includes replacement of AC watermain.
Pedestrian & Bicycle Safety Projects (164 Ave NE; East Lk Samm Pkwy; NE 104 St)	Initiation	October 2026	●	\$2,061,877	2023-2024	



# W. Lake Samm Pkwy Paving (N. of Marymoor to Leary Way)

Project #: 2311    Project start: 2023    Construction start: October 2024


Targeted completion: June 2025

Scope ●

Schedule ●

Budget ●

Total Project Budget: \$3,267,693

Phase	Construction Phase Funding	Construction Phase Spending	Construction Progress	
Design	\$1,620,384	\$33,966	0% 	100%
			■ Done	■ Remaining

## ➤ Project Progress

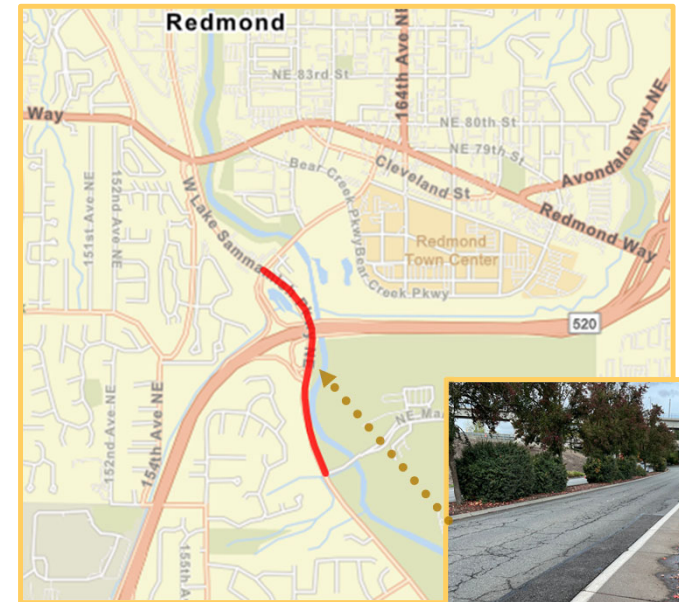
- Material submittals are coming in for approval

## ➤ Issues and Solutions for Yellow/Red Indicators

- Paving window in WSDOT Limited access is closed from October until April 2025
- Paving likely in May of 2025

## ➤ Key Upcoming Activities in the next month

- Preconstruction meeting and Notice to Proceed May 5, 2025



Funding Sources: General Fund, Grant, Business Tax

# Program Report - Transportation Planning

*Active projects managed by the Construction Division unless otherwise noted*

Program Manager: Michael Hintze

Project Name	Phase	Targeted Completion	Project Standing	Budget	CIP Inclusion	Information
Sidewalk Repairs - NE 40 <sup>th</sup> St. (156 <sup>th</sup> - Bel-Red Rd.)	Construction	May 2025	●	\$2,066,361	2017-2018	
Sidewalk Repairs - 166 <sup>th</sup> Ave (80 <sup>th</sup> - 85 <sup>th</sup> ), Avondale Way (170 <sup>th</sup> Ave. - Union Hill Rd),	Ad & Award	September 2025	●	\$2,705,371	2019-2020	Project will go out for bids in May
Bel-Red Buffered Bike Lanes	Ad & Award	November 2025	●	\$4,132,269	2019-2020	Project will go out for bids in April
NE 70 <sup>th</sup> Street Shared Use Path & Crosswalk (Redmond Way to 180 <sup>th</sup> Avenue NE)	Design	December 2025	●	\$3,116,863	2019-2020	
40 <sup>th</sup> Shared Use Path (163 <sup>rd</sup> Ave. to 172 <sup>nd</sup> )	Initiated	March 2027	●	\$7,106,922	2019-2020	
156 <sup>th</sup> Ave NE Shared Use Path (4300 block to 51 <sup>st</sup> St.)	Initiated	December 2027	●	\$4,970,518	2023-2024	



# NE 40<sup>th</sup> St. Shared Use Path (163<sup>rd</sup> Ave NE to 172<sup>nd</sup>)

Project #: 2333    Project start: 2024    Pre-Design start: April 2025

Targeted completion: March 2027

Scope ●

Schedule ●

Budget ●

Total Project Budget: \$7,106,922

Phase	Pre-Design Phase Funding	Pre-Design Phase Spending	Pre-Design Progress	
Pre-Design	\$249,927	\$944	<div> <div style="width: 5%;">5%</div> <div style="width: 95%;">95%</div> </div>	<div> <div style="width: 5%;">Done</div> <div style="width: 95%;">Remaining</div> </div>

## ➤ Project Progress

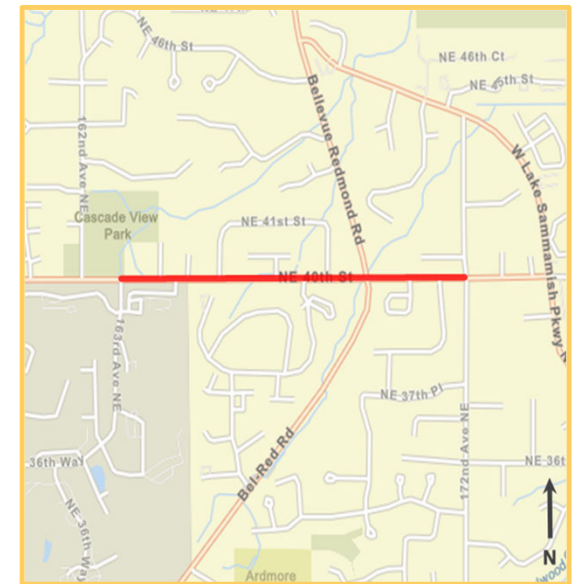
- Project charter completed
- Request for Proposal completed
- The project team visited the site to confirm the scope and project limits

## ➤ Issues and Solutions for Yellow/Red Indicators

- No issues

## ➤ Key Upcoming Activities in the next month

- Request for Design Proposal will be advertised in April



Funding Sources: Impact Fees, Community Facilities District (CFD)



# Program Report - Utilities

Active projects managed by the Construction Division unless otherwise noted

Program Manager: Doug De Vries

Project Name	Phase	Targeted Completion	Project Standing	Budget	CIP Inclusion	Information
10,000 Block of Avondale Rd. Erosion	Complete	March 2025	●	\$4,091,986	2019-2020	Joint project with Transportation.
Control System and Telemetry Upgrades Phase 2 and Phase 3	Construction	April 2025	●	\$5,205,057	2017-2018	
Overlake Station Vault - Stormwater Hatch	Construction	May 2025	●	\$155,000	2023-2024	
Reservoir Park Water Tank Repairs	Design	September 2025	●	\$735,000	2019-2020	
Evans Creek Relocation	Design	October 2026	●	\$19,003,074	2009-2010	Construction start delayed one year to complete permitting requirements and finish land acquisition.
Lift Station Equipment Upgrades Phs 2	Design	February 2028	●	\$3,526,685	2023-2024	
Novelty Hill Advanced Metering Infrastructure*	Pre-Design	October 2026	●	\$1,712,649	2019-2020	
Stormwater Infrastructure Replacement Improvement Project #2 - Sunrise Vue	Pre-Design	October 2026	●	\$331,834	2015-2016	
Monticello Pond Deep Sediment Removal	Initiation	March 2026	●	225,736	2019-2020	The project is on hold until summer for lower water levels.
Willows Rd. Watermain Extension	Initiation	January 2027	●	\$2,936,825	2021-2022	
Corrugated Metal Pipe Replacement Phs 1	Initiation	October 2026	●	\$630,867	2023-2024	



\*Managed by Maintenance and Operations

# Evans Creek Relocation

Project #: 0995    Project start: 2019    Design start: Mar 2020

Targeted completion: October 2026

Scope ●

Schedule ●

Budget ●

Total Project Budget: \$19,003,073

Phase	Design Phase Funding	Design Phase Spending	Design Progress	
Design	\$2,368,419	\$1,945,213	<div> <div style="width: 80%;"></div> <div>80% Done 20% Remaining</div> </div>	

## ➤ Project Progress

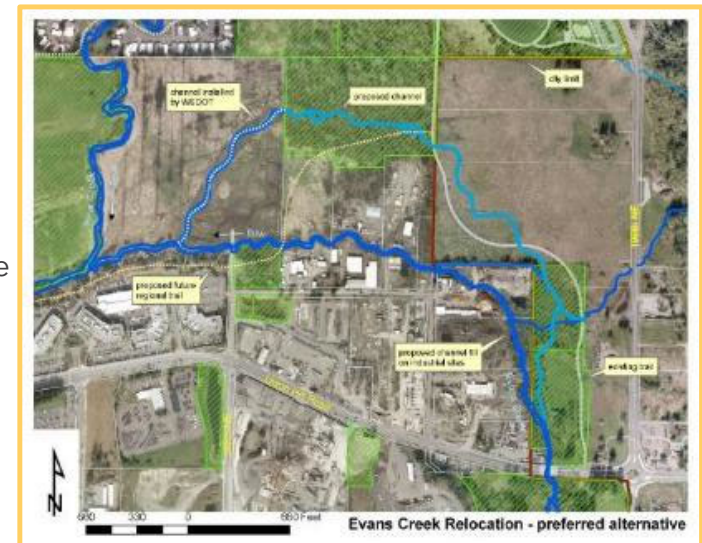
- Submitted final information to FEMA except for King County concurrence form.
- Still in conversations with King County on punch list with remaining items needed before concurrence.
- Drafted Maintenance and Operations agreement for internal review
- Exchanged information with Skanska, Handegard, and Schroeder on easements.

## ➤ Issues and Solutions for Yellow/Red Indicators

- The ad date is dependent on permits from King County. The last date to advertise to begin construction this summer is April 9<sup>th</sup>.

## ➤ Key Upcoming Activities in the next month

- Director level negotiations on level of risk City will accept for County approval.
- Need responses from FEMA and King County staff on remaining issues
- Continue to negotiate with property owners to acquire easements. City Attorney will file a petition for condemnation if needed.



Funding Sources: Stormwater CIP, Grants



# Pedestrian & Bicycle Safety Projects

Project	Status	Project Outcomes
40 <sup>th</sup> St. Sidewalks (156 <sup>th</sup> Ave to Bel-Red Rd.)	Construction	Safe pedestrian access to Redmond Technology Station that meets ADA requirements eliminates tripping hazards and reduces maintenance frequency.
Redmond Central Connector Phs III	Construction	Provide safe bicycle and pedestrian routes from the Bear Creek Trail/East Lake Sammamish Trail to the Cross Kirkland Corridor and the rest of the 42-mile Eastrail system
Sidewalk Repairs - 166 <sup>th</sup> Ave NE (80 <sup>th</sup> to 85 <sup>th</sup> St) and Avondale Way (170 <sup>th</sup> Ave to UHR)	Ad & Award	Safer pedestrian access within downtown and to the Downtown Redmond Light Rail Station and improved long-term maintenance needs.
Bel-Red Buffered Bike Lanes (30 <sup>th</sup> St. to WLSP)	Ad & Award	Improved pedestrian and bicycle access to Overlake Village Light Rail Station and Overlake Village.
NE 70 <sup>th</sup> Shared Use Path & Crosswalk	Design	Improved bicycle and pedestrian connectivity to the new Sound Transit light rail station.
156 <sup>th</sup> Ave NE Shared Use Path (4300 block to 51 <sup>st</sup> St.)	Initiation	A new facility for cyclists to enhance the safety for pedestrians and cyclists.
Pedestrian & Bicycle Safety Projects (164 Ave NE; East Lk Samm Pkwy; NE 104 St	Initiation	Safe, protected crossings for employees, residents, and business patrons.
Pedestrian and Bicycle Access - NE 40 <sup>th</sup> Street Shared Use Path (163 <sup>rd</sup> Ave NE to 172 <sup>nd</sup> )	Initiation	Improved pedestrian and bicycle access to the Redmond Technology Light Rail Station meeting ADA requirements.
ADA Improvements - Transportation Curbs and Ramps	Upcoming	New ramps will meet current ADA standards
Pedestrian Safety Improvements at Slip Lanes	Upcoming	Safety improvements at multiple pedestrian crossing locations.
Accessible Pedestrian System (APS) Upgrade	Upcoming	Improved pushbutton accessibility for pedestrians at up to 10 locations.
Pedestrian Safety Signs for Signals	Upcoming	Increased safety for pedestrians and bicyclists at multiple intersections.



# Capital Division Summary



# Summary of Capital Division Projected Milestones

	2025 Q2
<b>Pre-Design Start</b>	<ul style="list-style-type: none"> <li>- Pedestrian and Bicycle Access - NE 40th Street Shared Use Path (163rd Ave NE to 172nd)</li> <li>- Pedestrian &amp; Bicycle Safety Projects (164 Ave NE; East Lk Samm Pkwy; NE 104 St)</li> <li>- Willows Rd. Watermain Extension</li> </ul>
<b>Design Start</b>	<ul style="list-style-type: none"> <li>- ADA Improvements - Facilities Project 1</li> <li>- Pavement Management - Avondale Road (NE 90th Street to Novelty Hill Road)</li> <li>- Willows Rd. Watermain Extension</li> <li>- Stormwater Infrastructure Replacement Improvement Project #2 - Sunrise Vue</li> </ul>
<b>Advertise</b>	<ul style="list-style-type: none"> <li>- Evans Creek Relocation</li> <li>- Hardscape Project - Reservoir Park Sport Court Replacement</li> <li>- Reservoir Park Water Tank</li> <li>- Bel-Red Buffered Bike Lanes (30th St. to WLSP)</li> <li>- Hardscape Project - Meadow Park Sport Court Replacement</li> <li>- Sidewalk Repair Projects - 166th Ave NE (80th to 85th St) and Avondale Way (170th Ave to UHR)</li> </ul>
<b>Award</b>	<ul style="list-style-type: none"> <li>- Fire Station 17 Siding Replacement</li> <li>- Public Safety Building Phase 2 (Mechanical and Electrical)</li> <li>- Sustainability Building Automation (Energy Mgmt System)</li> <li>- Sustainability LED Lighting Building Retrofit</li> <li>- Evans Creek Relocation</li> <li>- Hardscape Project - Reservoir Park Sport Court Replacement</li> <li>- Reservoir Park Water Tank</li> <li>- Turf Replacement Grass Lawn Park Softball Field 1</li> <li>- Turf Replacement Hartman Park Baseball Infield</li> <li>- Bel-Red Buffered Bike Lanes (30th St. to WLSP)</li> <li>- Hardscape Project - Meadow Park Sport Court Replacement</li> <li>- Sidewalk Repair Projects - 166th Ave NE (80th to 85th St) and Avondale Way (170th Ave to UHR)</li> </ul>



# Summary of Capital Division Projected Milestones

	2025 Q2
<b>Substantial Completion</b>	<ul style="list-style-type: none"><li>- Pavement Management - West Lake Sammamish Parkway (North of Marymoor to Leary Way)</li><li>- PPE Management - Storage and Extractors</li><li>- Sidewalk Repair Project - 40th Street (156th Avenue to Bel-Red Road)</li><li>- Overlake Station Vault - Stormwater Hatch</li><li>- Control System and Telemetry Upgrades Phase 2 and Phase 3</li></ul>
<b>Acceptance</b>	<ul style="list-style-type: none"><li>- 152nd Avenue NE Improvements (24th Street to 28th Street)</li><li>- Cycle Track - 156th Avenue (NE 28th Street to 31st Street and 36th Street to 40th Street)</li><li>- Electric Vehicle Charging Stations (phase 1)</li><li>- 10,000 Block of Avondale Rd. Erosion</li><li>- Hardscape Project - Grass Lawn Park Parking Lot Repairs</li></ul>





# Thank You

---

Questions?

