

PARCC Plan:

Level of Service + Draft Policies

August 9, 2022

Council Study Session

Caroline Chapman Jeff Aken, Glenn Coil,
and Steve Duh (Conservation Technix)



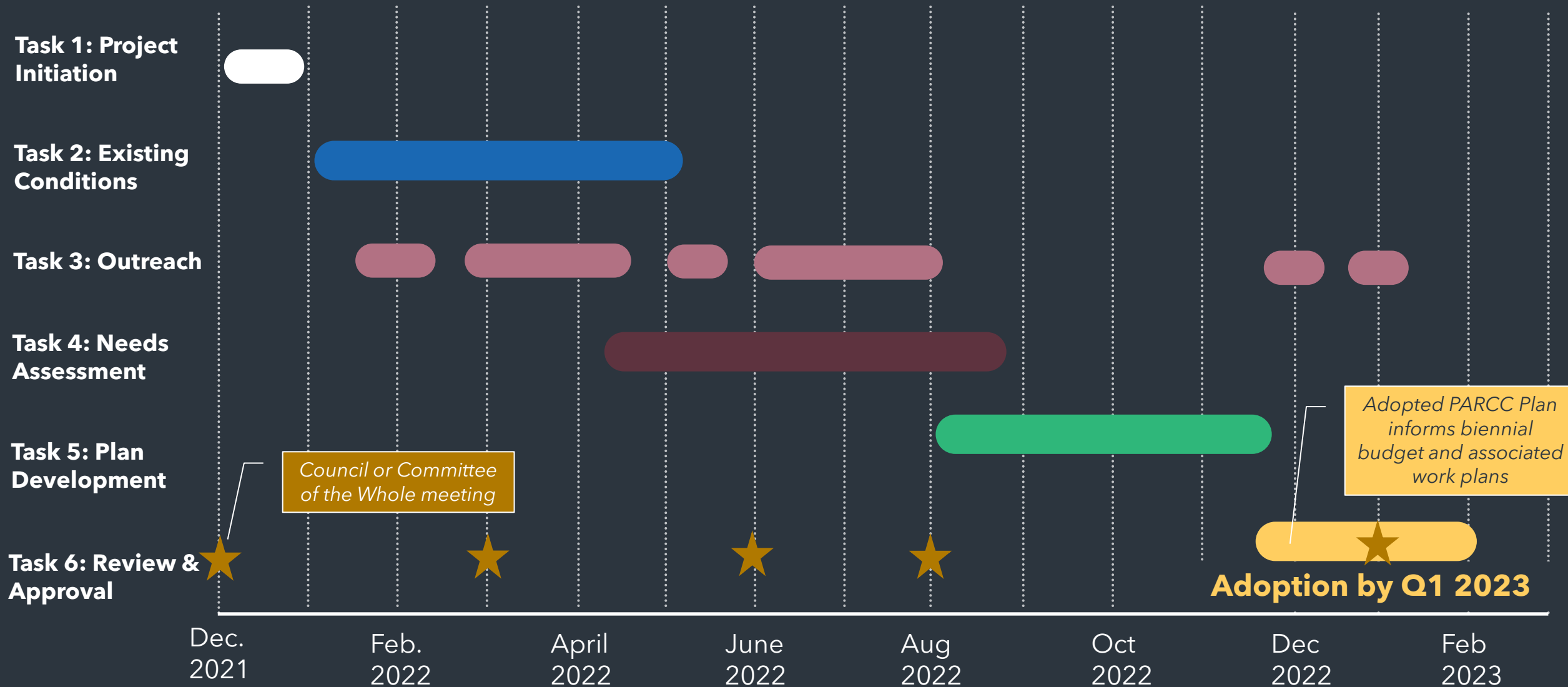
A woman and a child are walking away from the camera on a wooden pier that extends over a body of water. The woman is wearing a dark puffer jacket and the child is wearing a dark jacket and a beanie. They are holding hands. In the background, there are houses and trees on the far shore under a cloudy sky.

Agenda

- PARCC Plan Schedule
- Level of Service
- Capital Projects Update
- Draft PARCC Element Policies
- Next Steps

Discussion: *Does this information bring up questions or priorities that you'd like staff to consider the next phase?*

PARCC Plan Timeline



PARCC Plan Pillars

Community Needs Assessment

- Surveys
- Meetings and Stakeholder feedback

Presented June 14

Level of Service

- Mapping and Inventory
- Capital project updates

Today

Capital Projects

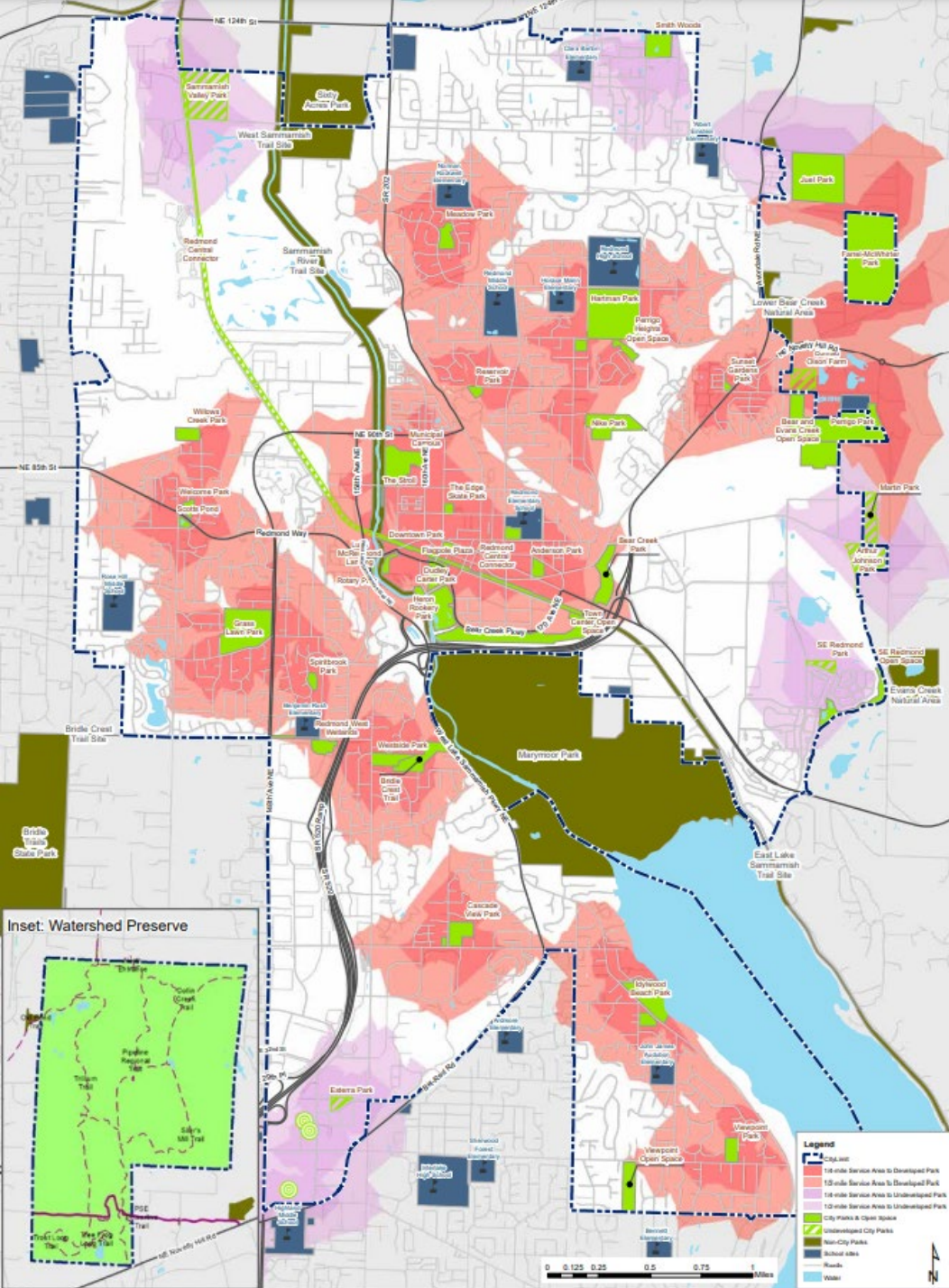
- Capital improvement list
- Project prioritization

Meeting date TBD



Level of Service

*Assessment that gives a “snapshot in time” by **geography**, **quality**, and **quantity**. Used to show progress towards goal.*



GEOGRAPHY SCORE:

½ Mile/10 Minute Walk to Parks

Maps can be used to identify **underserved areas** and **prioritize projects**.

54% of households within ½ mile of developed City of Redmond park

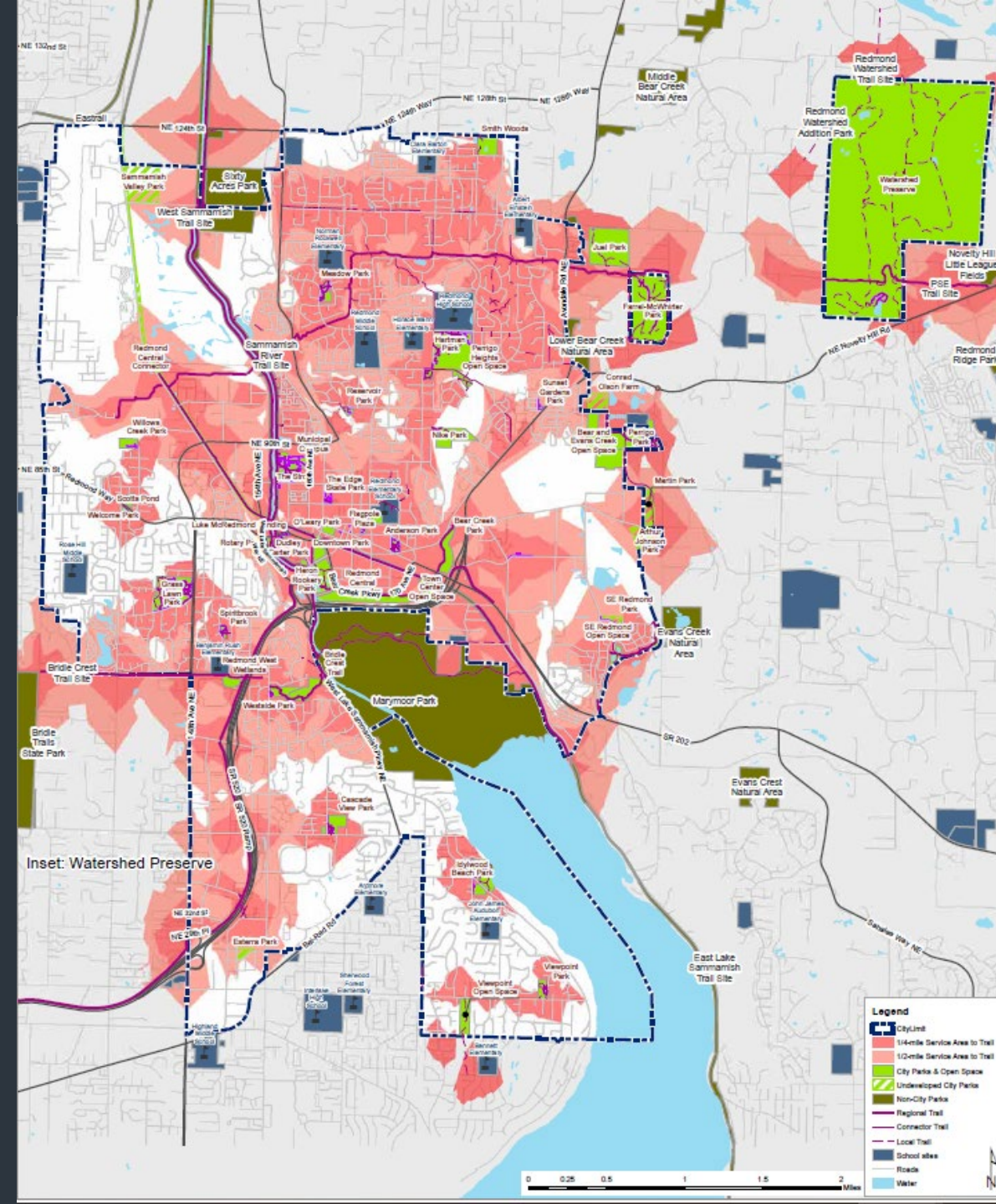
63.5% of households are within a ½ mile walk of a developed park – including non- City of Redmond facilities such as a school or County park.

GEOGRAPHY SCORE:

½ Mile/10 Minute Walk to Trail

Maps can be used to identify **underserved areas** and **prioritize projects**.

70% of households within ½ mile of trail access



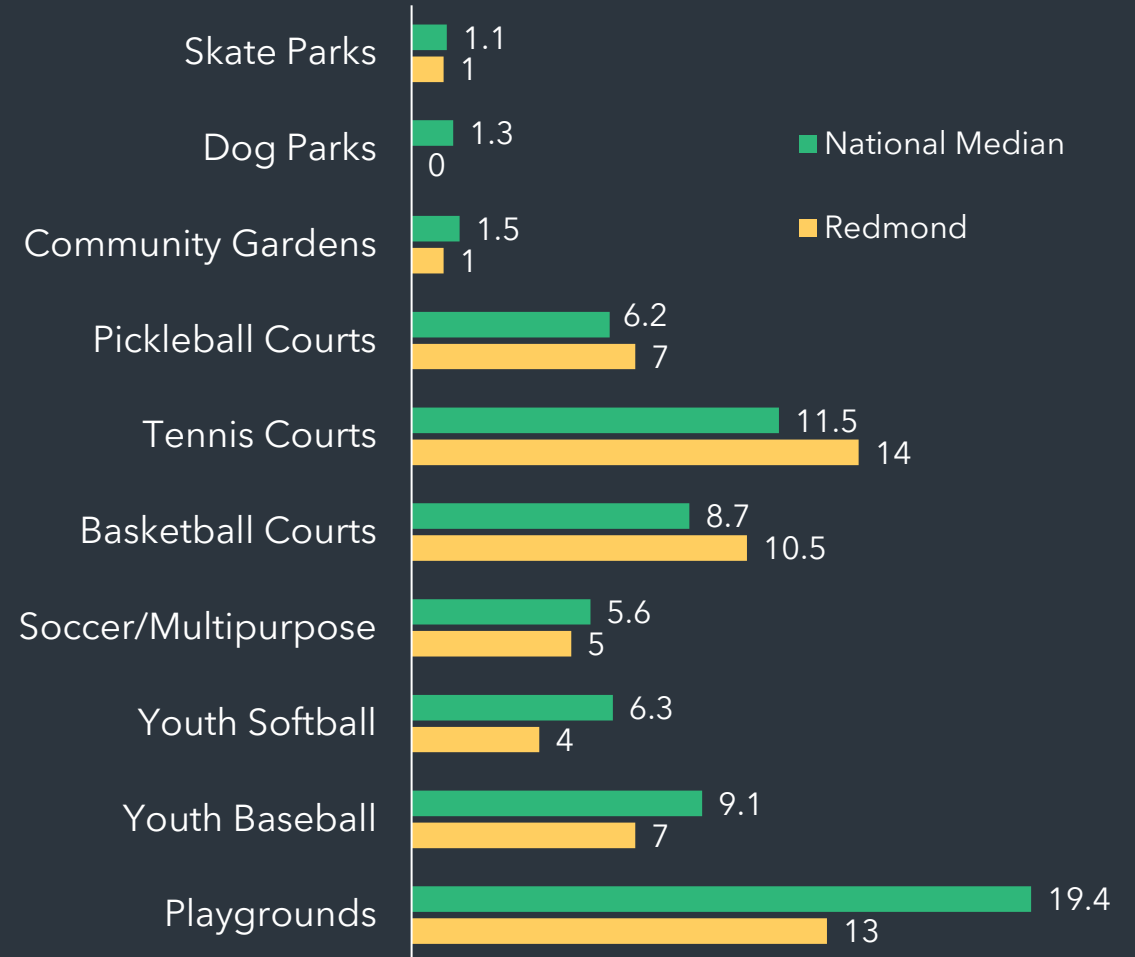
Quality Metrics

Public Satisfaction	
Satisfaction with City parks	90.1% A
Satisfaction with City trails	90.5% A
Public Sentiment: Condition	
Condition of parks rated excellent or good	72.4% B
Condition of natural resource parks rated excellent or good	63.2% C
Condition of trails	76.5% B
Agency Based Assessment	
Condition of existing parks (3-point scale)	1.2 B

Quantity Metrics

- Redmond has **17.4 acres/ 1,000 people**
- NRPA Median is **10.4/1,000**

Redmond Amenities compared
to National Average of
Similar Sized Jurisdictions



Assessment Summary by Neighborhood

Neighborhood	Acres per 1,000 people*	Average Park Score (1 to 3)	Amount of COR Playgrounds or Sports Amenities	Anticipated Growth**
Bear Creek	High	1.2	Moderate	Low
Downtown	Moderate	1.3	Low	Moderate
Education Hill	Moderate	1.6	High (#1)	Low
Grass Lawn	Moderate-Low	1.4	High	Low
Idylwood	Moderate	1.6	Moderate	Low
North Redmond	Low	1.0	None	Low
Overlake	Low	1.6	Moderate	High
Sammamish Valley	High	n/a	None	Low
SE Redmond	Moderate-Low	1.0	None	Moderate
Willows	Low	1.6	Low	Moderate

*2020 population + 25% of employment

**Based on Redmond 2050 Growth Scenarios



Capital Project Update

Progress from 2017 PARCC Plan, considerations for rating future projects

Capital Projects Update

Near Term (2017-2021) Project Progress

- **20 out of 24** projects completed
- **3 moved** to 2023-28 CIP
- **1 cancelled**
- **3 moved up** from mid-term projects



Project Rating Criteria: Incorporate Council & Community Priorities

Maintenance of
existing resources

Focus on **equity**,
underserved
communities

Connections to
parks and other
destinations

Supports
economic and
social **resiliency**



PARCC Element Draft Policies

Glenn Coil

REDMOND
 **2050**

PARCC Element (Comprehensive Plan)

Required consistency between
**Comprehensive Plan (2050),
Functional Plan (PARCC Plan)
& Capital Facilities Plan**

CF-1

Develop and regularly update functional plans that assess capital facility needs and strategies for addressing such needs. Provide opportunities for public involvement appropriate to the nature of the update. Use functional plans to guide the development of capital priorities and investment decisions within each of the following functional areas:

...

- *Parks, arts, recreation, culture and conservation*

Must Include:

- ✓ Estimates of Demand
- ✓ Evaluation of Facilities and Service Needs
- ✓ Evaluation of intergovernmental coordination for regional approaches to meet demand

What's New

2017 PARCC Plan & PARCC Element

- 2 Framework Policies
- 10 subsections by topic
- 65 PARCC policies



Redmond 2050

- 4 Framework Policies
- 14 total PARCC policies + 2 SMP Policies
- Policies flagged to include in PARCC Plan

- Emphasis on Redmond 2050 themes – **Equity & Inclusion, Resiliency, and Sustainability**
- **Simplified policies around framework policies** or moved to PARCC Plan
 1. Build Strong Communities
 2. Recreation & Cultural Enrichment
 3. Promote Conservation & Natural Areas
 4. Ensure Sound Management and Maintenance
- Codified **Shoreline Master Program** policies
- Draft policies **support PARCC element requirements**

PARCC

State, Regional, County Policy Emphasis:

- A. GMA requirements
- B. Align and implement PSRC's Regional Open Space Conservation Plan
- C. Prioritize facilities for urban residents and underserved communities

Other Major Policy Drivers:

- A. Need for facilities in Redmond's centers (Overlake, Marymoor) due to rapid growth
- B. Need for community centers
- C. Emerging technologies - ebikes, scooters
- D. Enhancing tree canopy
- E. Flexibility to meet changing needs and demands



PARCC Element 1.0



What we heard:

Community prioritizes funding for maintaining existing parks

Prepare for growth

Indoor community centers and facilities need improvement.

Prioritize equity & accessibility

Support for sustainability and conservation

What we did:

✓ FW-PR-4 Framework goal to highlight and prioritize maintenance and operations

✓ FW-PR-1 looks at future community needs for developing public amenities in partnership with development and areas of growth

✓ PR-4 focuses on partnerships to develop indoor facilities, will be further addressed by PARCC Plan

- ✓ Expand equity and accessibility language in policies, including FW-PR-1
- ✓ Identify opportunities for culturally diverse arts and recreation (FW-PR-2)
- ✓ Prioritize investments in underserved areas (PR-2)

✓ FW-PR-3 and supporting policies will address habitat, tree canopy, and connection to the natural world

Thank you!

Next Steps:

- Create potential project lists
- Develop project evaluation criteria
- Community Meeting (Fall) on potential projects
- Council Study Session (Winter) on draft plan



LetsConnectRedmond.com/PARCC

Appendix



2017 PARCC Plan: Parks & Trails LOS

Parks Amenity	Target Population	Distance	2017 Actual
Children's Play Feature	100% of residents	Convenient access (1/2 mile to 1 mile dependent on park amenities)	52%
Outdoor Sports and Fitness Facilities	100% of residents 25% of employment	Convenient access (1/2 mile to 1 mile depending on park type)	54%
Trails	100% of residents 25% of employment	1/4 mile to trail access point	34%
Urban Parks	Provide park land in urban centers that accommodate events of 10,000 people in one or more parks. Park land in each urban center should provide a variety of uses including active park land, respite opportunities for residents and workers, as well as flexible space for communitywide events and programs		
Resource Parks	Continue to enhance natural areas within all parks and especially in resource parks to improve tree canopy health and coverage in an effort to meet a citywide tree canopy coverage goal of 45 percent. Strategically acquire new land to preserve high quality forested areas and habitat.		

Existing Criteria from 2017 Plan

- Developed with feedback from public, staff, and the Capital Investment Strategy team
- Projects that address **safety hazards** and **preservation** of existing assets weighted higher

Exhibit 10.1: Rating Criteria for Capital Projects

Criteria	Description	Project Type	Weighted	Scale
Safety Hazard	Physical safety hazards such that use of the facility or amenity may fail and cause harm to people.	PR, TR, RN	X3	0 – 5
Preserve/Replace Asset	Investment necessary to retain the value of the asset.	PR, TR, RN	X2	0 – 5
Geographic Equity	Each neighborhood has access to parks and trails.	PR, TR	Not weighted	0 – 5
Walkability/Connectivity	Completing non-motorized connections through construction of trails.	PR, TR	Not weighted	0 – 5
Community Demand	Community use and feedback indicate the need for a facility.	PR, TR	Not weighted	0 – 5
Service Delivery	Improve service delivery for maintenance and operations and/or recreational programming.	PR, TR, RN	Not weighted	0 – 5
Unique Benefits (seven categories)	Environmental, economic, public art, historic preservation/cultural resources, partnerships, regulatory requirements. Each benefit category is scored separately, seven in total.	PR, TR	Not weighted	0 – 5 for each category
Customer Service	Improve the experience of customers using the park, specifically addressing the ability to use park features and meet expectations for quality.	RN	Not weighted	0 – 5

Draft Recommendation

	2017 Definition	2023 Suggestion	Changes
Safety Hazard:	Physical safety hazards like use of the facility or amenity may fail and cause danger to people.	Safety Hazard	None proposed
Preserve/ Replace Asset:	Investment necessary to retain the value of the asset.	Preserve/ Replace Asset:	None proposed, priority affirmed in community feedback
Community Demand:	Community use and feedback indicate the need for a facility.	Community Demand:	None proposed
Geographic Equity	Each neighborhood has access to parks and trails.	Equity (Expanded)	Expand score to evaluate historically underserved (to be defined) <i>& reflect unique features</i>
Walkability/ Connectivity	Completing non-motorized connections	NEW: Improves Level of Service	Replace Walkability and service delivery since LOS addresses these topics
Service Delivery	Improve service delivery for maintenance and operations and/or recreational programming		
Unique Benefits (7 total categories)	Environmental, economic, public art, historic preservation, partnerships, regulatory requirements	Environmental Benefits <i>(Brought up a level)</i>	Previously under ‘unique benefits’, includes canopy, wetlands, ESAP actions
		Regulatory Requirements <i>(Brought up a level)</i>	None proposed: Required law or grant (Ecology, ADA) or supports regional plan
		NEW: Improves resiliency (Groups economic benefit, partnerships, to one score)	Investment would provide economic benefits or benefit from partnerships
Customer Service	Improve the experience of customers using the park, specifically addressing the ability to use park features and meet expectations for quality	Cut	Covered by community demand, safety, Level of Service

go from
14
to
8
criteria

	<i>Sports Fields/Courts</i>	<i>Amenities and Structures</i>	<i>Average Parks Site Score</i>
Anderson Park	1.0	1.0	1.0
Arthur Johnson Park-undeveloped	-	-	-
Bear and Evans Creek Open Space	-	1.0	1.0
Bear Creek Park	-	1.0	1.0
Bridal Crest Trail	-	1.3	1.7
Cascade View Park	1.3	1.3	1.5
Conrad Olson Farm-undeveloped	-	-	-
Downtown Park	-	1.0	1.0
Dudley Carter Park	-	-	-
Edge Skate Park	1.0	1.0	1.0
Esterra Park-underconstruction	-	-	-
Farrel-McWhirter Park	1.0	1.1	1.4
Flagpole Plaza	-	1.2	1.6
Grass Lawn Park	1.0	1.1	1.4
Hartman Park	1.1	1.0	1.0
Heron Rookery Park	-	1.5	1.8
Idylwood Beach Park	1.0	1.1	1.0
Juel Park	1.0	1.7	1.9
Luke McRedmond Landing	1.0	1.0	1.0
Martin Park	-	1.0	1.0
Meadow Park	1.8	1.0	1.3
Municipal Campus	1.5	1.0	1.2
Nike Park	1.5	1.0	1.2

	<i>Sports Fields/Courts</i>	<i>Amenities and Structures</i>	<i>Average Parks Site Score</i>
O'Leary Park	2.0	1.0	1.3
Perrigo Heights Open Space	-	2.0	2.5
Perrigo Park	1.0	1.1	1.4
Redmond Central Connector	-	1.0	1.0
Redmond West Wetlands	-	1.7	2.3
Reservoir Park	3.0	1.2	2.1
Rotary Park	-	2.0	2.5
Sammamish Valley Park-undeveloped	-	-	-
Scotts Pond	-	1.5	1.8
SE Redmond Park (Open Space)	-	1.0	1.0
SE Redmond Park-undeveloped	-	-	-
Smith Woods	-	1.0	1.0
Spiritbrook Park	1.0	1.0	1.0
Sunset Gardens Park	1.0	1.0	1.0
The Stroll	-	1.3	1.7
Town Center Open Space	-	1.0	1.0
Viewpoint Park	1.5	1.7	2.1
Viewpoint Park (Open Space)	-	1.3	1.6
Watershed Preserve	-	1.0	1.0
Welcome Pond	-	1.0	1.0
Westside Park	1.0	1.1	1.0
Willows Creek Park	1.7	1.1	1.6
Average	1.32	1.19	1.38



DRAFT PARCC Policies

Build Strong Communities

FW-PR-1

Build strong communities by providing accessible and resilient parks, trails, and community centers that meet current and future community needs.

PR-1	Develop distinctive parks and community centers that respond to the unique needs of the community it serves.
PR-2	Prioritize Parks and Recreation investments in underserved communities to improve equitable access to public amenities.
PR-3	Increase connectivity and resiliency by developing safe trails and pathways that are easily accessed by a variety of trail users.
PR-4	Expand access to Parks & Recreation opportunities through partnerships with public, private, and non-profits that will pursue innovative approaches in acquisition, development, programming, and joint maintenance.
PR-5	Encourage development of publicly accessible open space amenities within public and private developments in the Urban Centers.

Recreation and Cultural Enrichment

FW-PR-2

Provide all community members with diverse recreational and cultural arts opportunities that reflect community needs.

PR-6	Support the growth of Redmond's creative economy, create opportunities for the local arts and culture community, champion equitable access to the arts for all residents and a more vibrant city.
PR-7	Provide inclusive, comprehensive, and quality events, arts, enrichment activities, and recreational programs that accommodate the needs and interests of all community members.
PR-8	Provide opportunities to improve physical and mental health by encouraging use of parks and recreation facilities and participation in recreational and enrichment programs.

Promote Conservation and Natural Areas

FW-PR-3

Maintain and promote a vibrant system of parks and trails that are sustainably designed, preserve various types of habitat, and protect the natural beauty of Redmond.

PR-9

Preserve and enhance natural areas within parks to protect wildlife habitat and corridors, enhance urban forest canopy, and support climate action goals.

PR-10

Encourage the public's connection to the natural world by providing access to natural areas and waterways in ways that will not compromise the environmental integrity of the area.

PR-11

Preserve and enhance the historic resources within the park and recreation system.

Ensure Sound Management and Maintenance

FW-PR-4

Target investments that allow for affordable, fair, and equitable delivery of services that provide a safe, resilient, efficient, and functional system.

PR-12

Proactively manage and maintain park assets in a way that results in replacement or renovation in advance of need.

PR-13

Prepare, as part of the functional plan, a long-term financial strategy that funds capital projects for current and future needs of the parks and recreation system that is consistent with the Comprehensive Plan and complies with state and regional regulations.

PR-14

Develop and maintain level of service standards to monitor equitable access to opportunities that improve quality of life and address current and past inequities.

Policies incorporated as part of the Shoreline Master Program

These are referenced in the 2009 SMP Ordinance 2486 and shall be maintained.

PR-15	Encourage the acquisition of property which will provide access to shorelines and local streams, with emphasis on areas where current and anticipated development patterns are unlikely to provide access or where there are significant access needs. Promote the creation of open space corridors along these water resources to provide for passive recreation and wildlife habitat. (SMP).
PR-16	As a complement to the citywide pedestrian pathway system, the City should develop a visual system for enhancing connections to the shoreline and identifying shoreline areas, considering such elements as street graphics, landscaping, street furniture or artwork. (SMP)