

JUNE 2, 2020, TUESDAY**4:30 p.m. Parks and Human Services Committee of the Whole**

I.	Pandemic Response	Planning/Parks
Councilmember	Question	Staff Response
	No questions	

II.	Senior Center	Parks
Councilmember	Question	Staff Response
	No questions	

III.	Human Service 2021-2022 Application Process	Planning
Councilmember	Question	Staff Response
	No Questions	

IV.	Green Redmond Partnership	Parks
Councilmember	Question	Staff Response
	No Questions	

V.	Redmond Central Connector III- Linkages with RCC I & II	Planning/Parks
Councilmember	Question	Staff Response
Kritzer	1. Could we get a more detailed diagram of the planned improvements? While Attachment A gives the location, it doesn't make it very clear in a visual way how changes will be made.	The project includes 3 connections to the RCC (and a 4th will be built by Sound Transit as part of the Downtown Redmond Link Extension (DRLE))

		<ul style="list-style-type: none">• The project at 90th completes a bike-lane to trail improvement, allowing bikes to transition from the bike lane onto the sidewalk/trail on the northbound side. This is important since there is a large amount of right-turning traffic at this location and it will offer a much more comfortable and safe connection between the trail and the existing bike network. It includes sidewalk and trail improvements at the NE corner of 90th.• The project at 87th includes a crosswalk at Willows, RRFB (rectangular rapid flash beacons) and curb, gutter, sidewalk to make the connection to the RCC. It will greatly improve access from the neighborhoods to the west of Willows.• The Red 160 connection will improve access towards Cleveland by making a current social path a concrete, ADA accessible access route up to the trail. It's been a desire line for years to access the trail this way. <p>All improvements were identified in the PARCC plan and will improve both ADA access and general access to the trail.</p> <p>Please see attached plan sections to see more detail.</p>
--	--	---

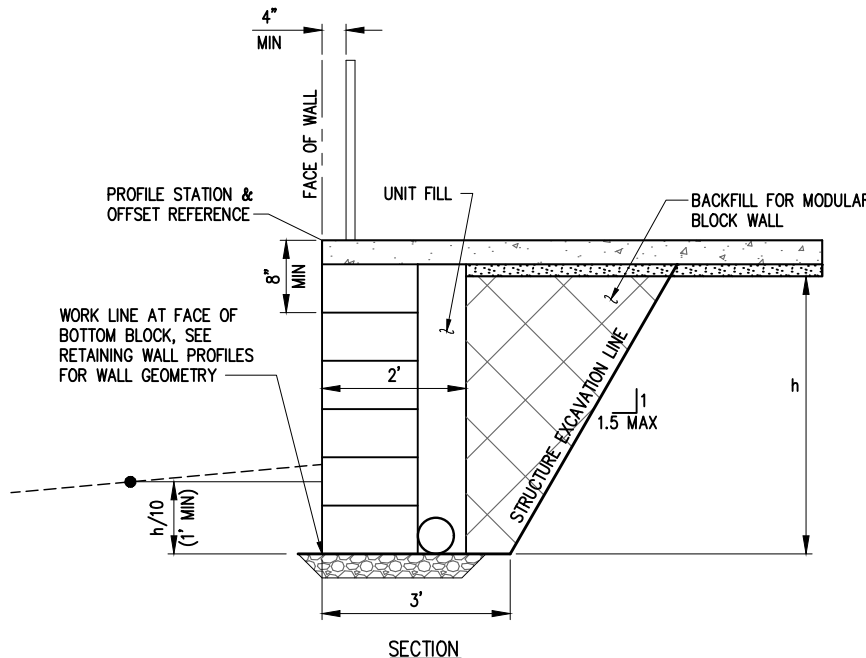
K:\PROJECTS\REDMOND\19013 - ON-CALL CONSTRUCTION SVCS\19013W6 - Central Connector Linkages\DESIGN\Drawings\Contract\19013W6COV.dwg 2/25/2020 9:06 AM

KPG PROJECT No. 19013W6	SHT <u>1</u> OF <u>12</u>
-------------------------	---------------------------

DETAIL TO BE INCLUDED IN FUTURE SUBMITTAL

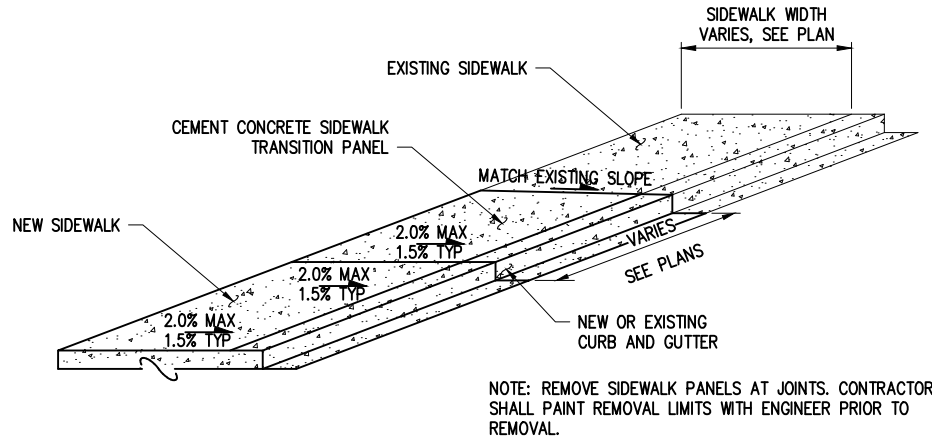
MODULAR BLOCK FILL WALL DETAIL

NTS



MODULAR BLOCK FILL WALL

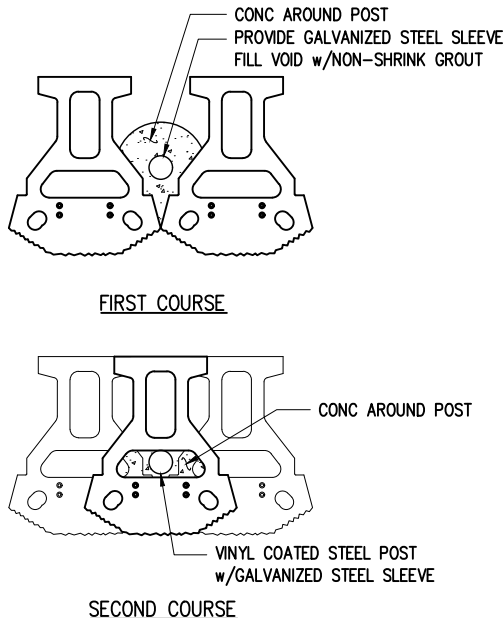
NTS



DETAIL TO BE INCLUDED IN FUTURE SUBMITTAL

CEMENT CONCRETE SIDEWALK TRANSITION DETAIL


NTS



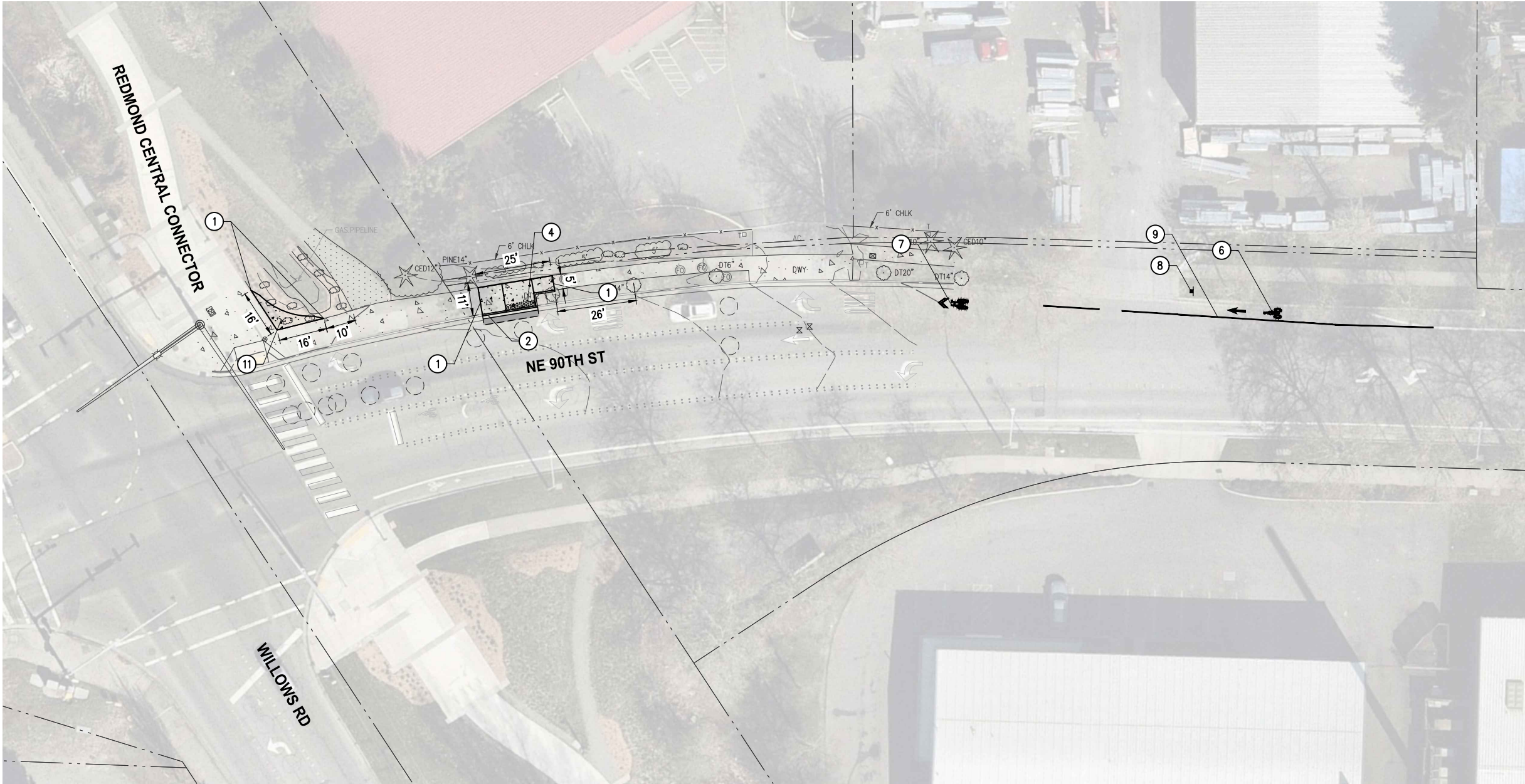
POST POSITION DETAIL

NTS

NO.	DATE	BY	APPR.	REVISIONS	<div>Approved By</div> <div>19013W6DET.dwg</div> <div>FILENAME 02/27</div> <div>DESIGNED BY DATE 02/27</div> <div>DRAWN BY DATE 02/27</div> <div>PROJECT MANAGER DATE 02/27</div> <div>PROJECT ENGINEER DATE 02/27</div>

KPG Interdisciplinary Design SEATTLE 3131 Elliott Ave Suite 400 WA 98121 (206) 296-1560 www.kpgid.com	30% REVIEW SUBMITTAL 02/24/2020	 City of Redmond WASHINGTON	CITY OF REDMOND CENTRAL CONNECTOR LINKAGES	DETAILS DETAILS 01			
				KPG PROJECT No. 19013W6	SHT 2	OF 12	

K:\PROJECTS\REDMOND\19013 - ON-CALL CONSTRUCTION\SVCS\19013W6 - Central Connector Linkages\DESIGN\Drawings\Contract\19013W6PLN.dwg 2/25/2020 9:07 AM



GENERAL NOTES

1. USE CAUTION WHEN EXCAVATING IN PROXIMITY OF EXISTING UTILITIES. CONTRACTOR IS RESPONSIBLE FOR DAMAGE TO UTILITIES AND UTILITY STRUCTURES.
2. PRESERVE AND PROTECT ALL ABOVE AND BELOW GRADE IMPROVEMENTS THAT ARE TO REMAIN IN PLACE.
3. REMOVAL OF SIDEWALK PANELS SHALL BE BETWEEN EXPANSION JOINTS WITH NO SAWCUTTING.
4. THE CONTRACTOR SHALL MAINTAIN A PEDESTRIAN PATHWAY AT ALL TIMES.
5. REMOVE ALL CONFLICTING CHANNELIZATION IN ACCORDANCE WITH WSDOT 9-22.3(6).
6. MAINTAIN ALL EXISTING CURB UNLESS OTHERWISE NOTED ON PLANS.
7. PROTECT ALL UTILITY STRUCTURES ABOVE AND BELOW GRADE THAT ARE TO REMAIN IN PLACE.

CONSTRUCTION NOTES

- ① MATCH EXISTING.
- ② INSTALL CONCRETE CURB AND GUTTER PER COR STD DET 304.
- ④ INSTALL PARALLEL CURB RAMP TYPE B PER COR STD DET 307.
- ⑥ INSTALL BICYCLE LANE CHANNELIZATION PER COR STD DET 319 & 319A.
- ⑦ INSTALL SHARROW LANE PER COR STD DET 320.
- ⑧ INSTALL SHARROW LANE SIGN R4-11 PER COR STD DET 320.
- ⑨ INSTALL LANE LINE TYPE C PER COR STD DET 312.
- ⑪ INSTALL CONCRETE PER DETAIL, SHEET 2.
- ⑱ INSTALL 8" WHITE LANE LINE PER COR STD DET 319.

LEGEND

- CONCRETE PAVEMENT
- CONCRETE SIDEWALK
- NEW PAVEMENT
- OVERLAY PAVEMENT
- DETECTABLE WARNING SURFACE
- SAWCUT LINE
- CUT LINE

NO.	DATE	BY	APPR.	REVISIONS

Approved By		19013W6PLN.dwg
ENGINEERING MANAGER	DATE	MD 02/20
PROJECT MANAGER	DATE	DY 02/20
PROJECT ENGINEER	DATE	SA 02/20
	CHECKED BY	DATE

KPG
Interdisciplinary Design
SEATTLE
3131 Elliott Ave
Suite 400 WA 98121
(206) 286 1640
www.kpg.com

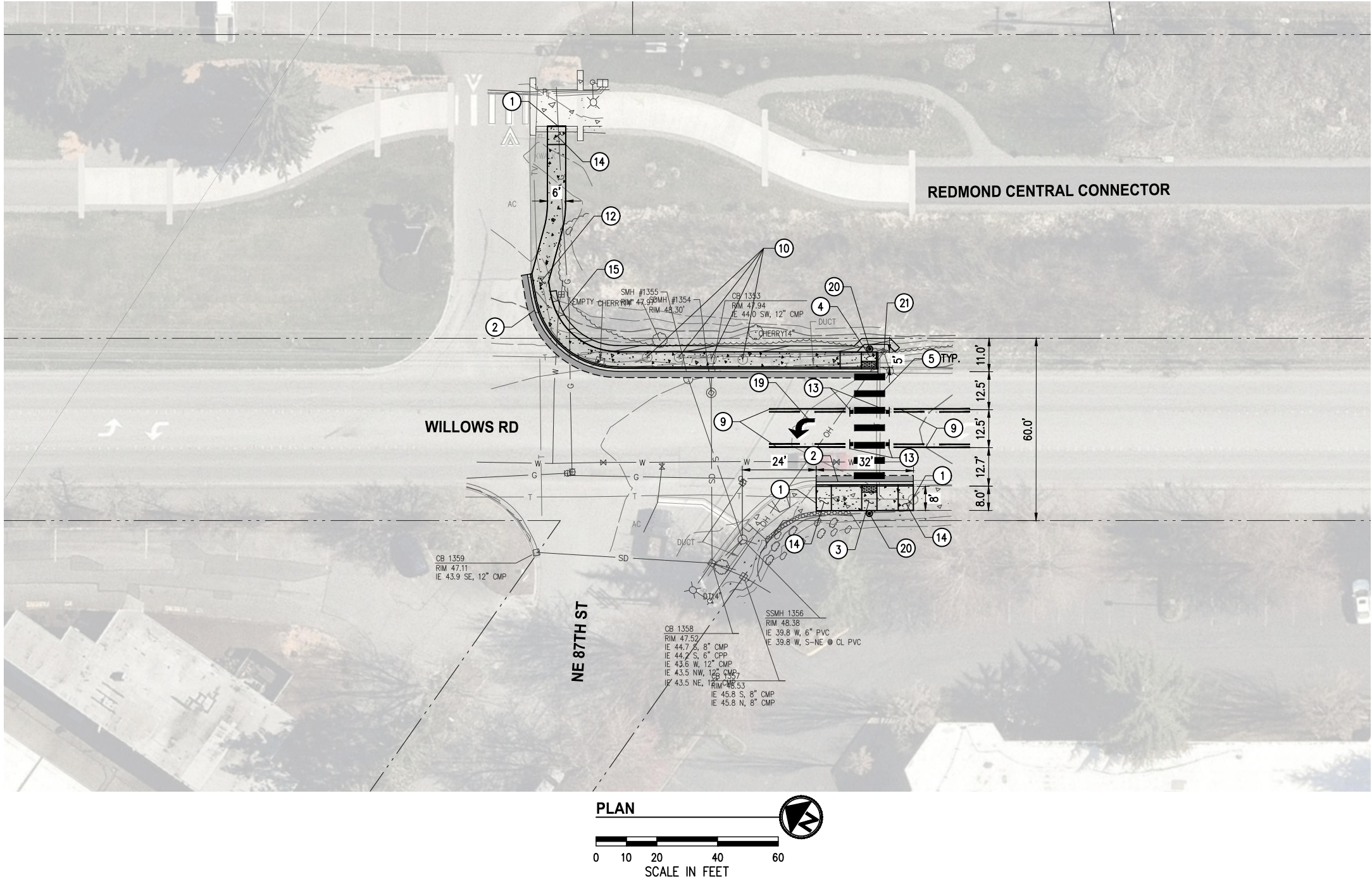
**30% REVIEW
SUBMITTAL**
02/24/2020



CITY OF REDMOND
CENTRAL CONNECTOR LINKAGES

ROADWAY PLAN
SITE A - NE 90TH ST & WILLOWS RD

K:\PROJECTS\REDMOND\19013 - ON-CALL CONSTRUCTION\SVCS\19013W6 - Central Connector Linkages\DESIGN\Drawings\Contract\19013W6PLN.dwg 2/25/2020 9:07 AM



- GENERAL NOTES**
1. USE CAUTION WHEN EXCAVATING IN PROXIMITY OF EXISTING UTILITIES. CONTRACTOR IS RESPONSIBLE FOR DAMAGE TO UTILITIES AND UTILITY STRUCTURES.
 2. PRESERVE AND PROTECT ALL ABOVE AND BELOW GRADE IMPROVEMENTS THAT ARE TO REMAIN IN PLACE.
 3. REMOVAL OF SIDEWALK PANELS SHALL BE BETWEEN EXPANSION JOINTS WITH NO SAWCUTTING.
 4. THE CONTRACTOR SHALL MAINTAIN A PEDESTRIAN PATHWAY AT ALL TIMES.
 5. REMOVE ALL CONFLICTING CHANNELIZATION IN ACCORDANCE WITH WSDOT 9-22.3(6).
 6. MAINTAIN ALL EXISTING CURB UNLESS OTHERWISE NOTED ON PLANS.
 7. PROTECT ALL UTILITY STRUCTURES ABOVE AND BELOW GRADE THAT ARE TO REMAIN IN PLACE.

- CONSTRUCTION NOTES**
- ① MATCH EXISTING.
 - ② INSTALL CONCRETE CURB AND GUTTER PER COR STD DET 304.
 - ③ INSTALL PARALLEL CURB RAMP TYPE A PER COR STD DET 307.
 - ④ INSTALL PARALLEL CURB RAMP TYPE B PER COR STD DET 307.
 - ⑤ INSTALL CROSSWALK MARKING PER COR STD DET 311.
 - ⑨ INSTALL LANE LINE TYPE C PER COR STD DET 312.
 - ⑩ ADJUST UTILITY TO GRADE, BY OTHERS.
 - ⑫ INSTALL CONCRETE RAMP PER DETAIL, SHEET X. RAMP SLOPES SHALL BE 7.5% MAX AND CROSS SLOPES SHALL BE 1.5% MAX. LANDINGS SHALL BE 1.5% MAX IN ALL DIRECTIONS.
 - ⑬ INSTALL FLEXIBLE IN ROAD CROSSWALK SIGN R1-6, PER DETAIL, SHEET 2.
 - ⑭ INSTALL CEMENT CONCRETE SIDEWALK TRANSITION PANEL PER DETAIL, SHEET 2.
 - ⑮ INSTALL MODULAR BLOCK FILL WALL PER DETAIL, SHEET 2.
 - ⑰ INSTALL LEFT TURN LANE CHANNELIZATION PER COR STD 419.
 - ⑳ INSTALL AC POWERED RRFB.
 - ㉑ UTILITY POLE TO REMAIN.

- LEGEND**
- | | |
|--|----------------------------|
| | CONCRETE PAVEMENT |
| | CONCRETE SIDEWALK |
| | NEW PAVEMENT |
| | OVERLAY PAVEMENT |
| | DETECTABLE WARNING SURFACE |
| | SAWCUT LINE |
| | CUT LINE |
| | GIS ROW LINE |

NO.	DATE	BY	APPR.	REVISIONS

Approved By		19013W6PLN.dwg
ENGINEERING MANAGER	DATE	MD 02/20
PROJECT MANAGER	DATE	DY 02/20
PROJECT ENGINEER	DATE	SA 02/20
	CHECKED BY	DATE

KPG
Interdisciplinary Design
SEATTLE
3131 Elliott Ave
Suite 400 WA 98121
(206) 286 1640
www.kpg.com

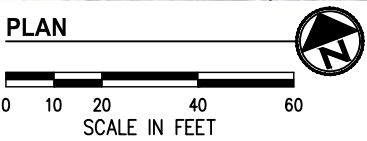
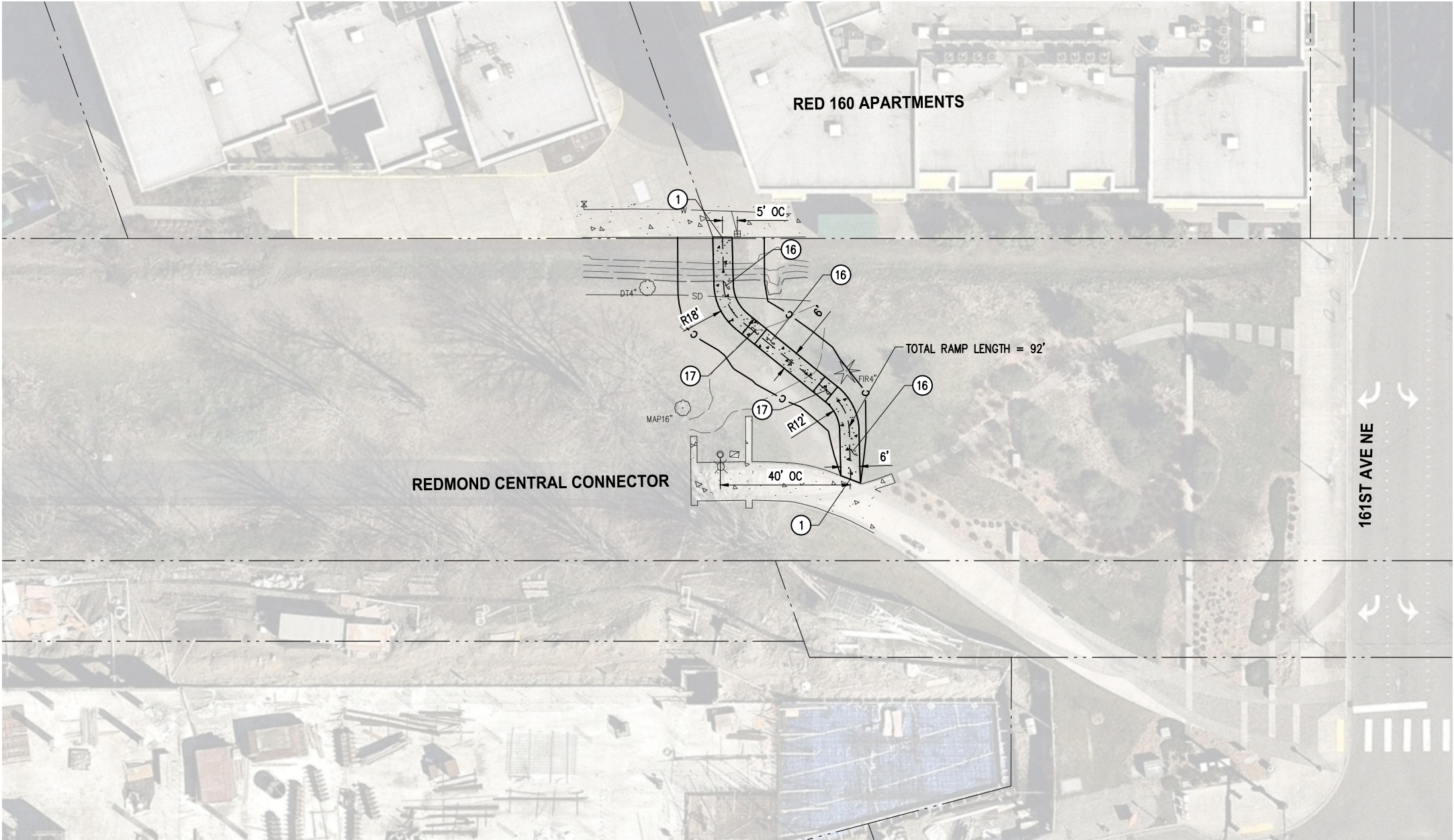
**30% REVIEW
SUBMITTAL**
02/24/2020



CITY OF REDMOND
CENTRAL CONNECTOR LINKAGES

ROADWAY PLAN
SITE B - NE 87TH ST & WILLOWS RD

K:\PROJECTS\REDMOND\19013 - ON-CALL CONSTRUCTION\SVCS\19013W6 - Central Connector Linkages\DESIGN\Drawings\Contract\19013W6PLN.dwg 2/25/2020 9:07 AM



GENERAL NOTES

1. USE CAUTION WHEN EXCAVATING IN PROXIMITY OF EXISTING UTILITIES. CONTRACTOR IS RESPONSIBLE FOR DAMAGE TO UTILITIES AND UTILITY STRUCTURES.
2. PRESERVE AND PROTECT ALL ABOVE AND BELOW GRADE IMPROVEMENTS THAT ARE TO REMAIN IN PLACE.
3. REMOVAL OF SIDEWALK PANELS SHALL BE BETWEEN EXPANSION JOINTS WITH NO SAWCUTTING.
4. THE CONTRACTOR SHALL MAINTAIN A PEDESTRIAN PATHWAY AT ALL TIMES.
5. REMOVE ALL CONFLICTING CHANNELIZATION IN ACCORDANCE WITH WSDOT 9-22.3(6).
6. MAINTAIN ALL EXISTING CURB UNLESS OTHERWISE NOTED ON PLANS.
7. PROTECT ALL UTILITY STRUCTURES ABOVE AND BELOW GRADE THAT ARE TO REMAIN IN PLACE.

CONSTRUCTION NOTES

- ① MATCH EXISTING.
- ①⑥ INSTALL CONCRETE RAMP. RUNNING SLOPE SHALL BE 7.5% MAX AND CROSS SLOPE SHALL BE 1.5% MAX.
- ①⑦ INSTALL 5' X 6' CONCRETE RAMP LANDING. SLOPES SHALL BE 1.5% MAX IN ALL DIRECTIONS.

LEGEND

- CONCRETE PAVEMENT
- CONCRETE SIDEWALK
- NEW PAVEMENT
- OVERLAY PAVEMENT
- DETECTABLE WARNING SURFACE
- SAWCUT LINE
- CUT LINE
- GIS ROW LINE

NO.	DATE	BY	APPR.	REVISIONS

Approved By		19013W6PLN.dwg
		FILENAME
		MD
ENGINEERING MANAGER	DATE	DESIGNED BY
		DY
PROJECT MANAGER	DATE	DRAWN BY
		SA
PROJECT ENGINEER	DATE	CHECKED BY

KPG
Interdisciplinary Design
SEATTLE
3131 Elliott Ave
Suite 400 WA 98121
(206) 286 1640
www.kpg.com

**30% REVIEW
SUBMITTAL**
02/24/2020



CITY OF REDMOND
CENTRAL CONNECTOR LINKAGES

ROADWAY PLAN SITE C - RED 160 APTS		
KPG PROJECT No. 19013W6	SHT	8 OF 12