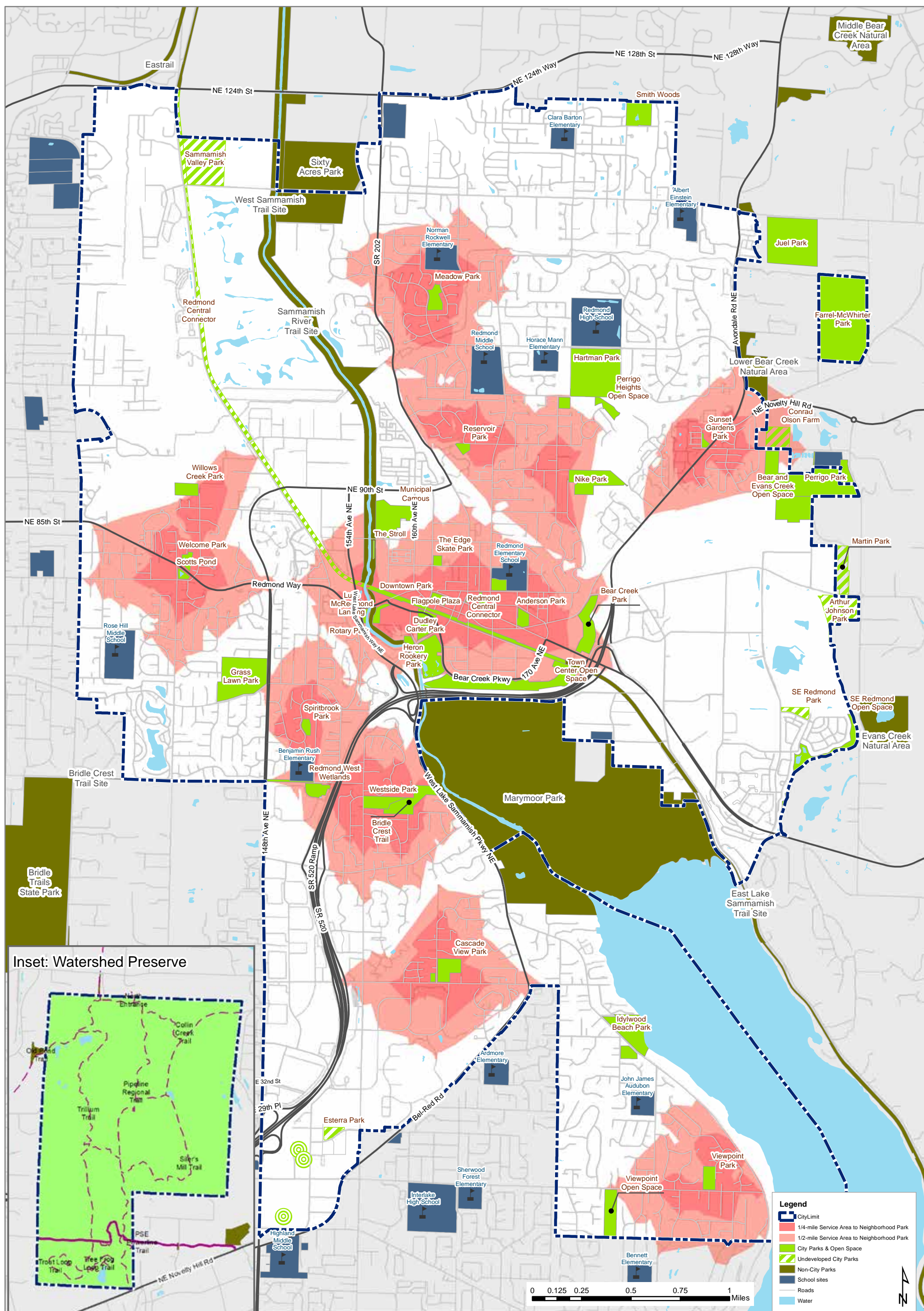
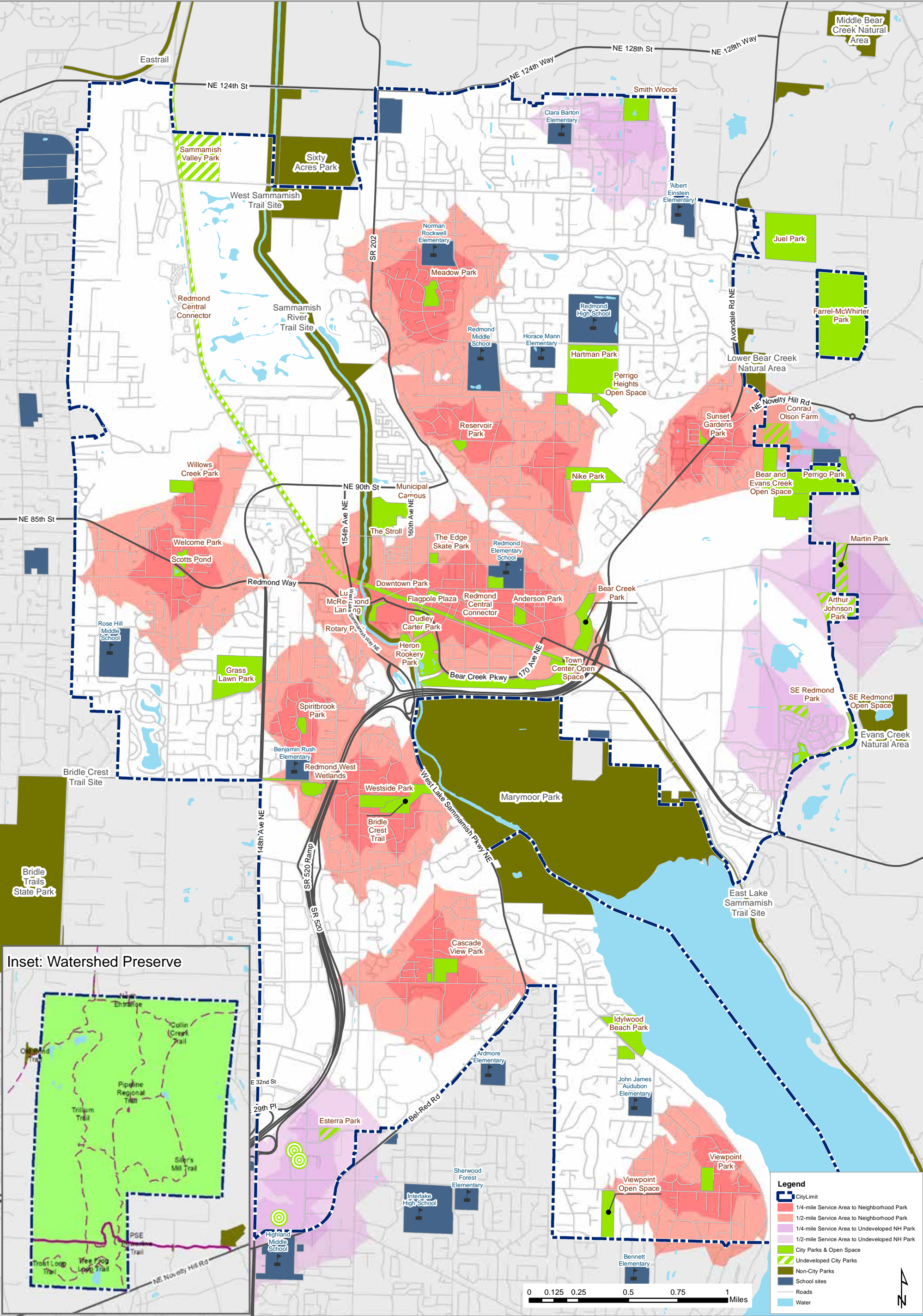


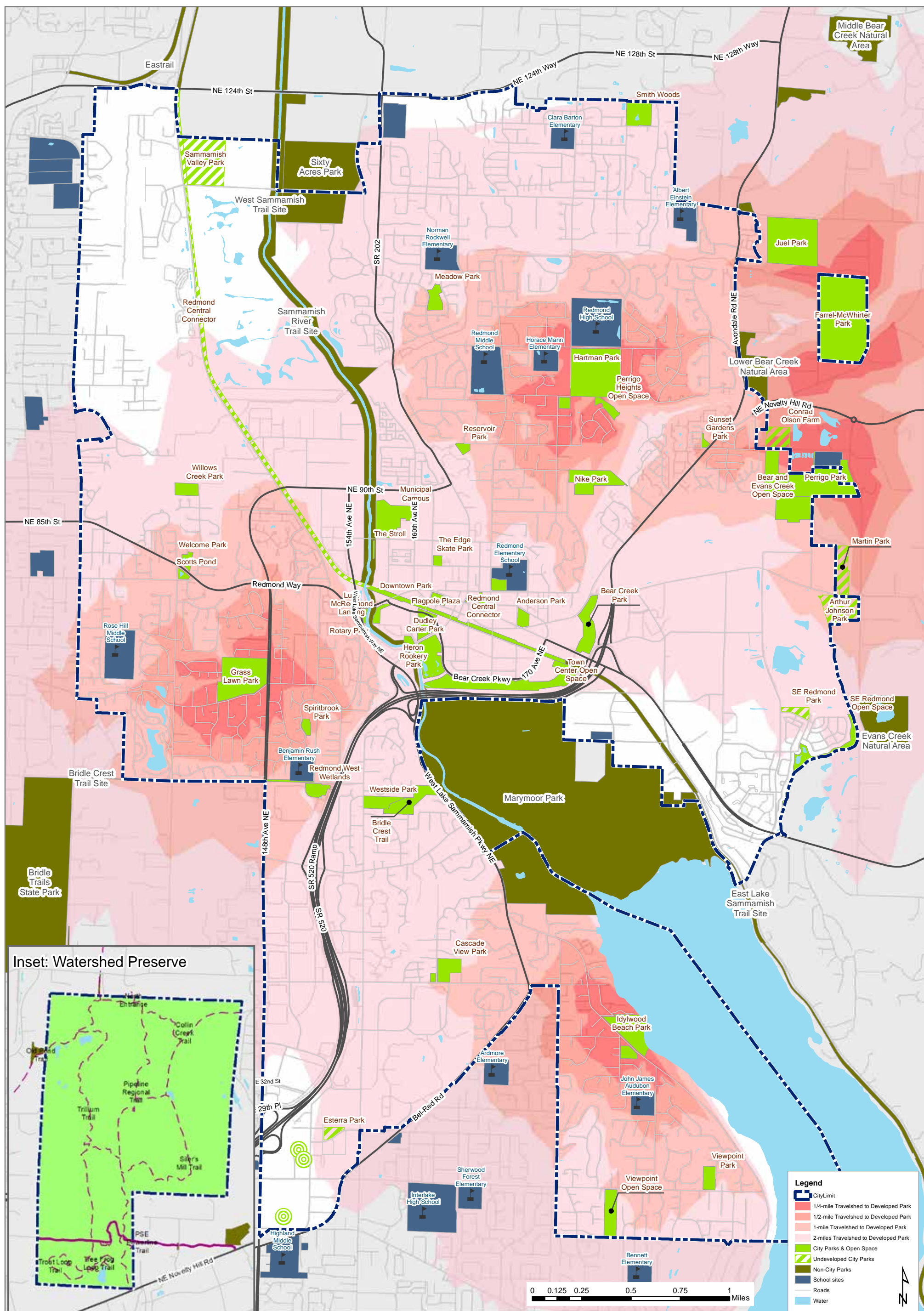
## Map 1: Existing Parks & Open Spaces



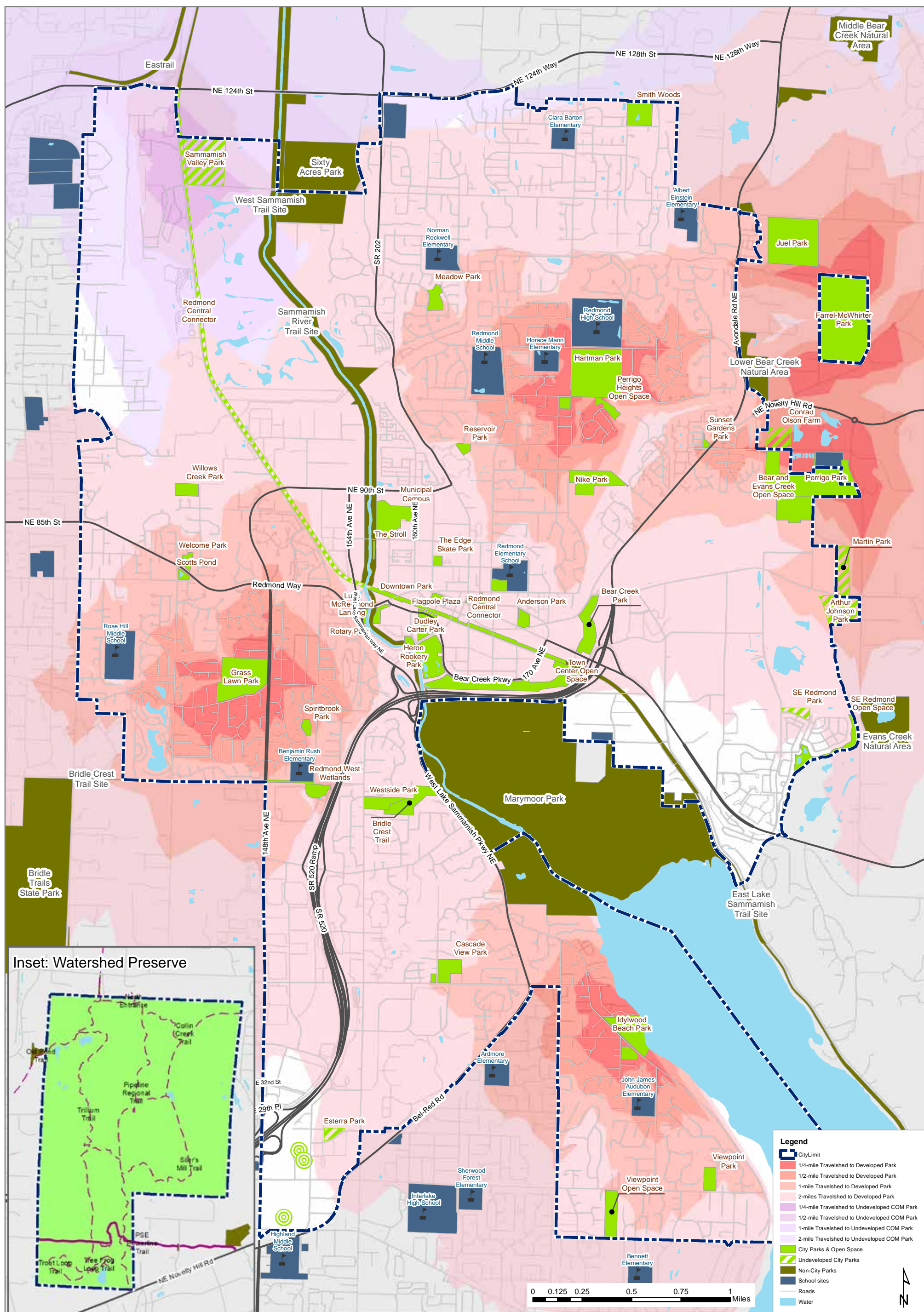
## Map 2: Travelsheds for Developed Neighborhood Parks (to ½-mile)



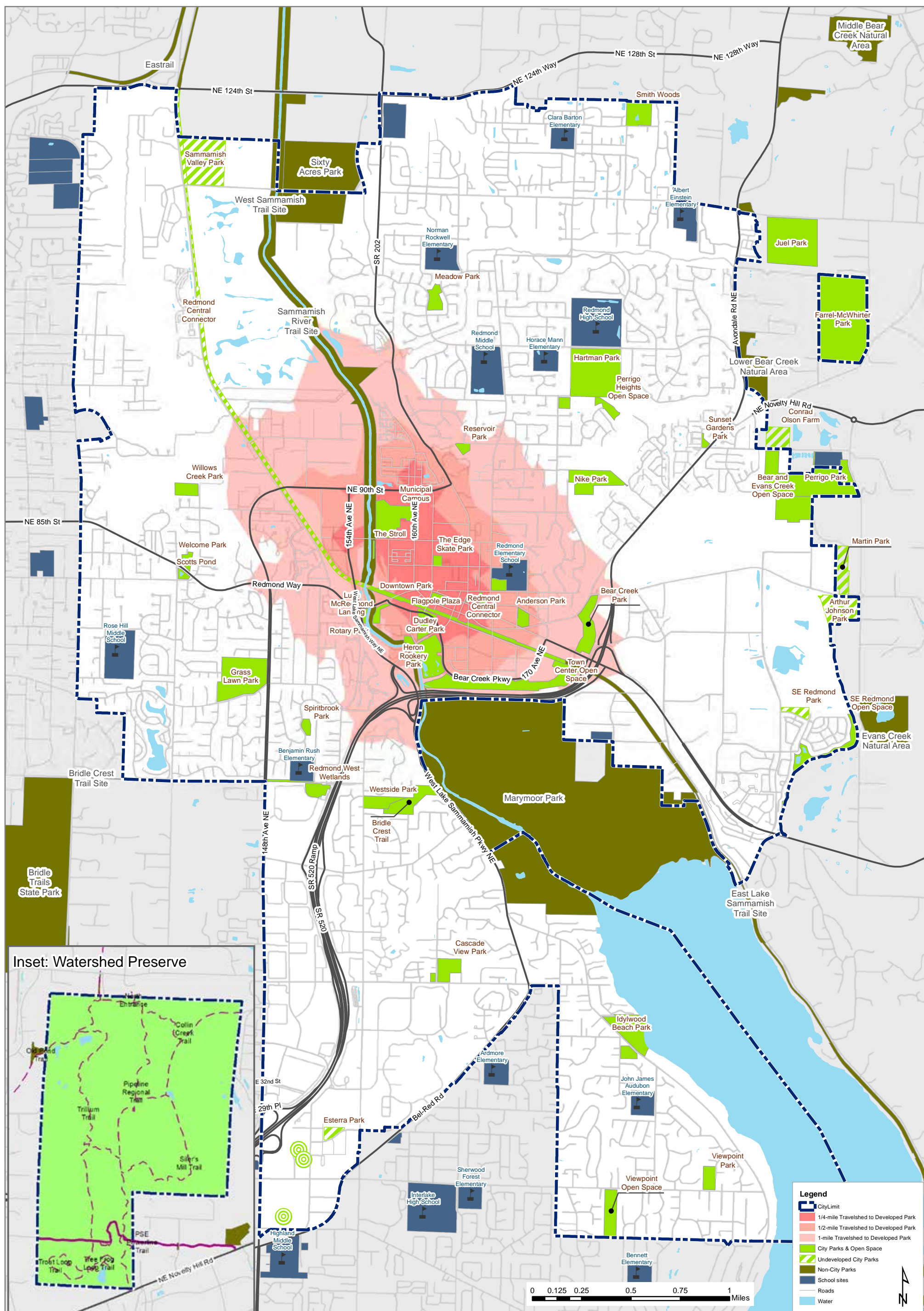
Map 3: Travelsheds for All Neighborhood Parks (to 1/2-mile)



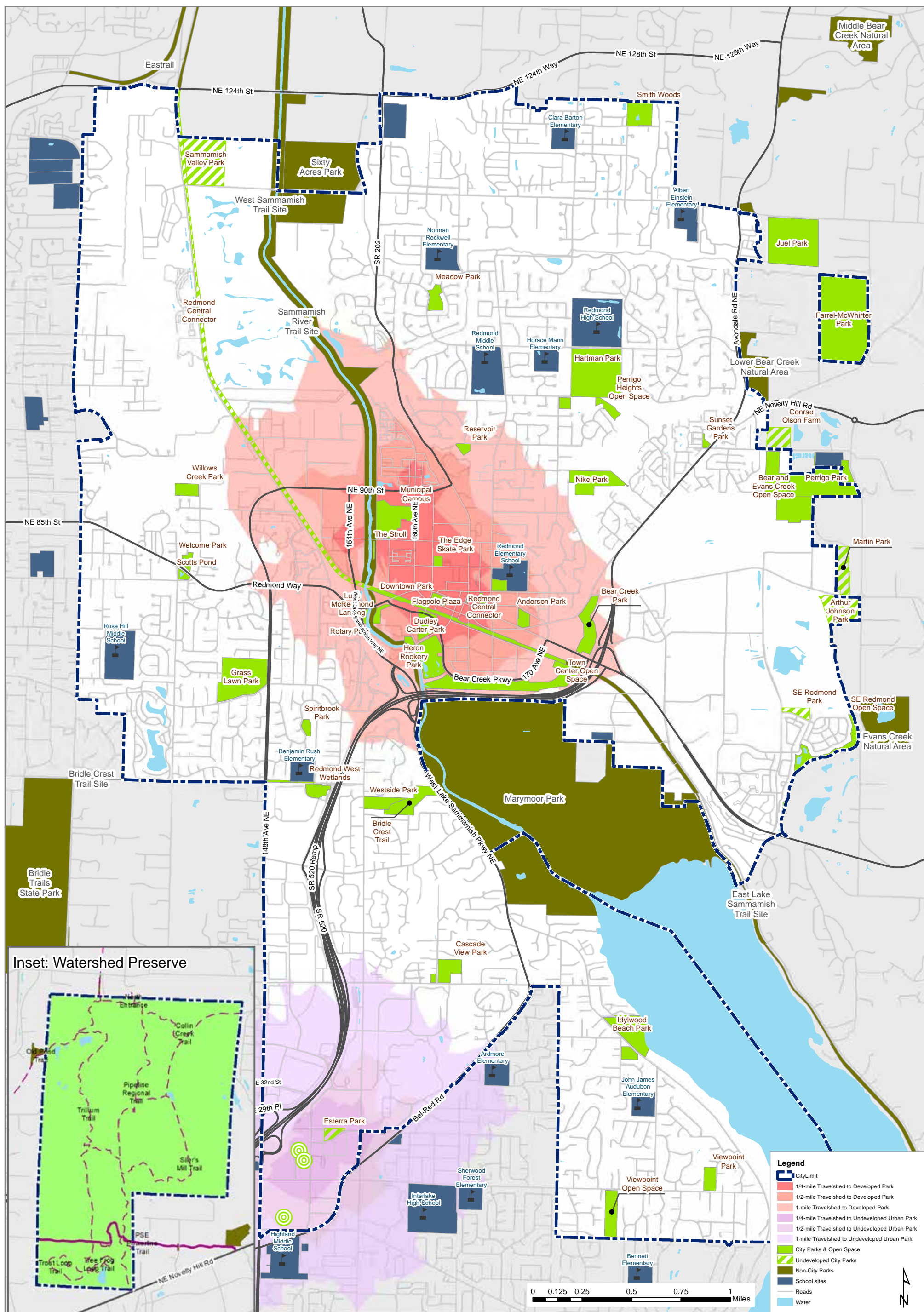
## Map 4: Travelsheds for Developed Community Parks (to 2-miles)



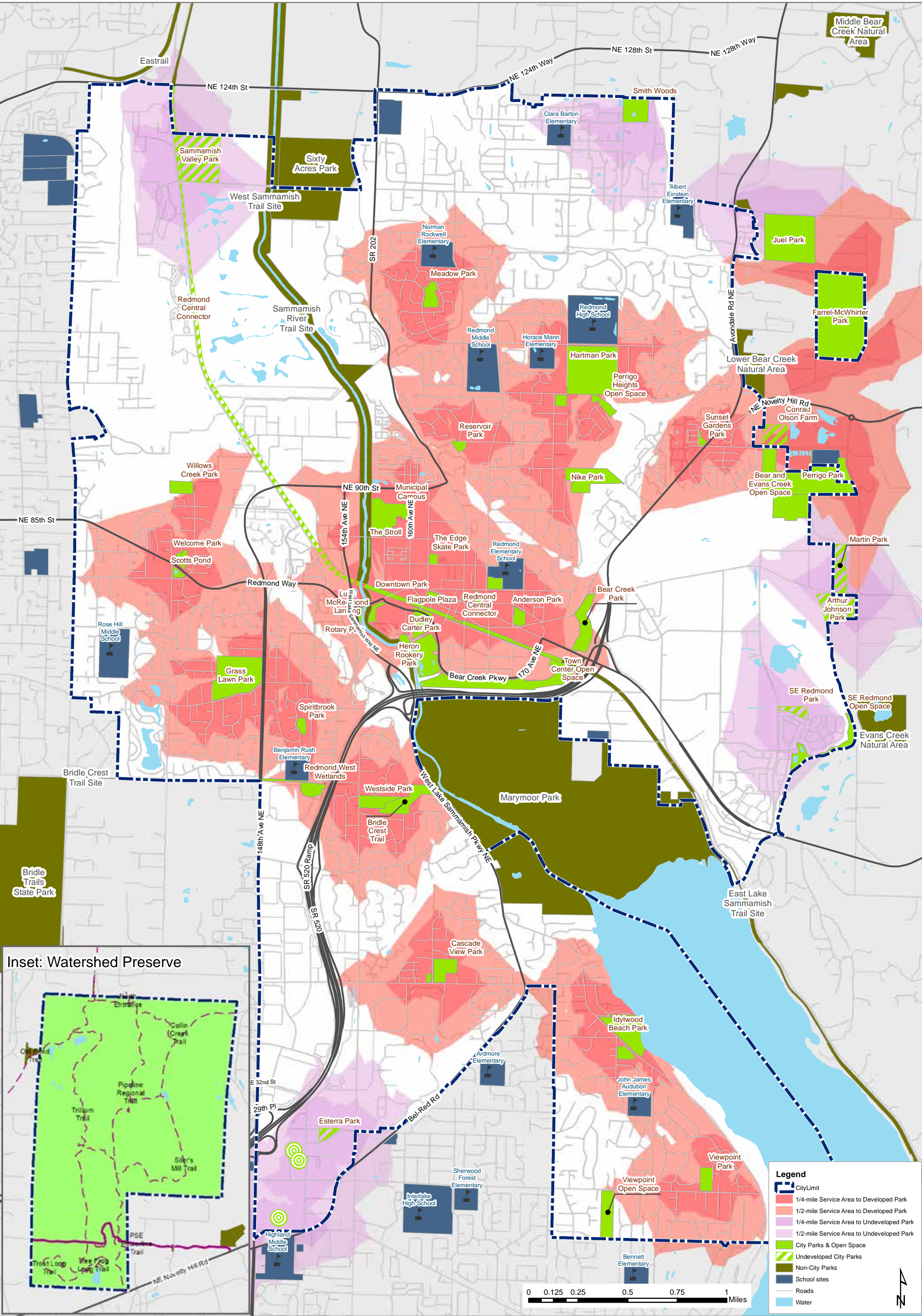
## Map 5: Travelsheds for All Community Parks (to 2-miles)



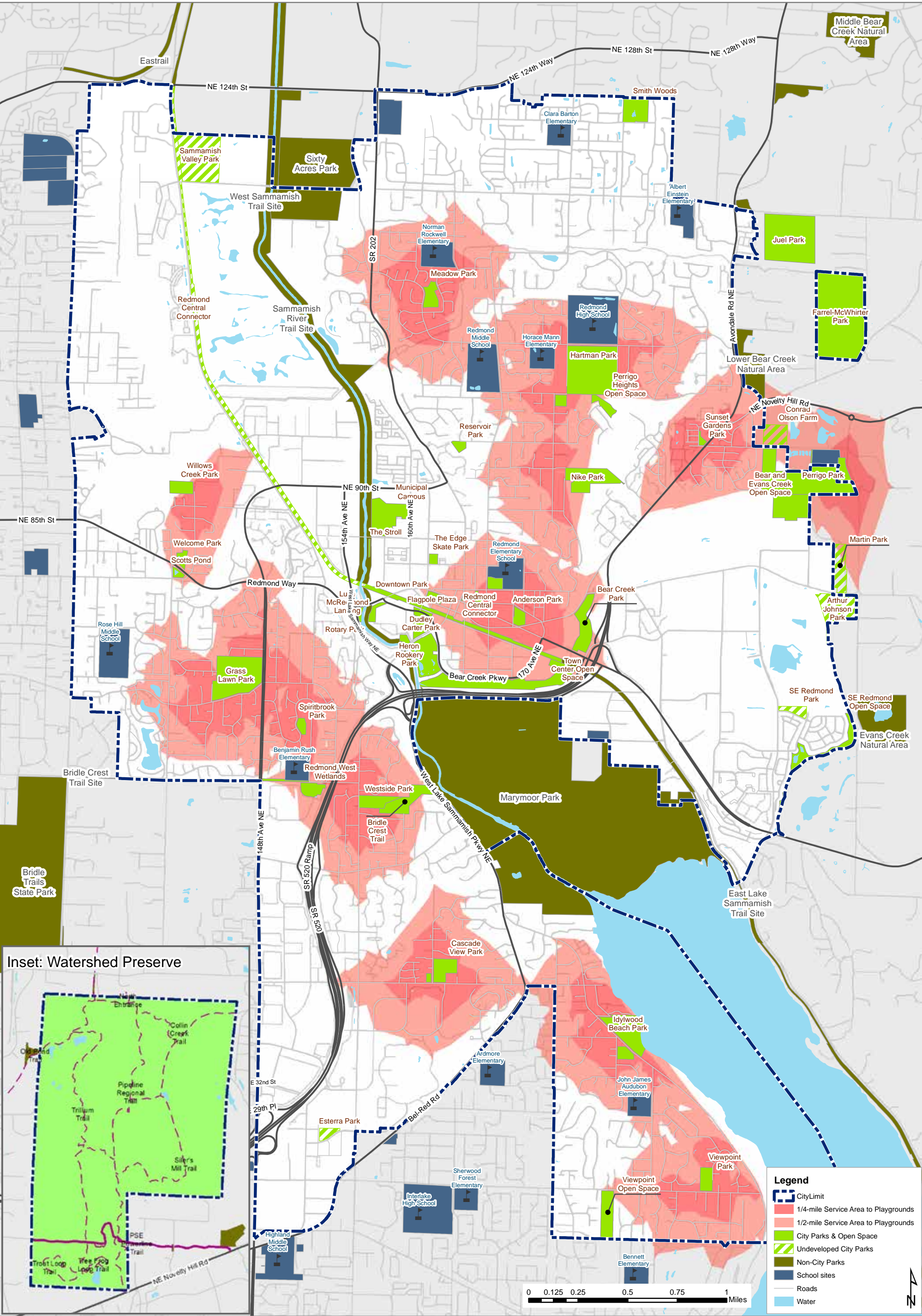
## Map 6: Travelsheds for Developed Urban Parks (to 1-mile)



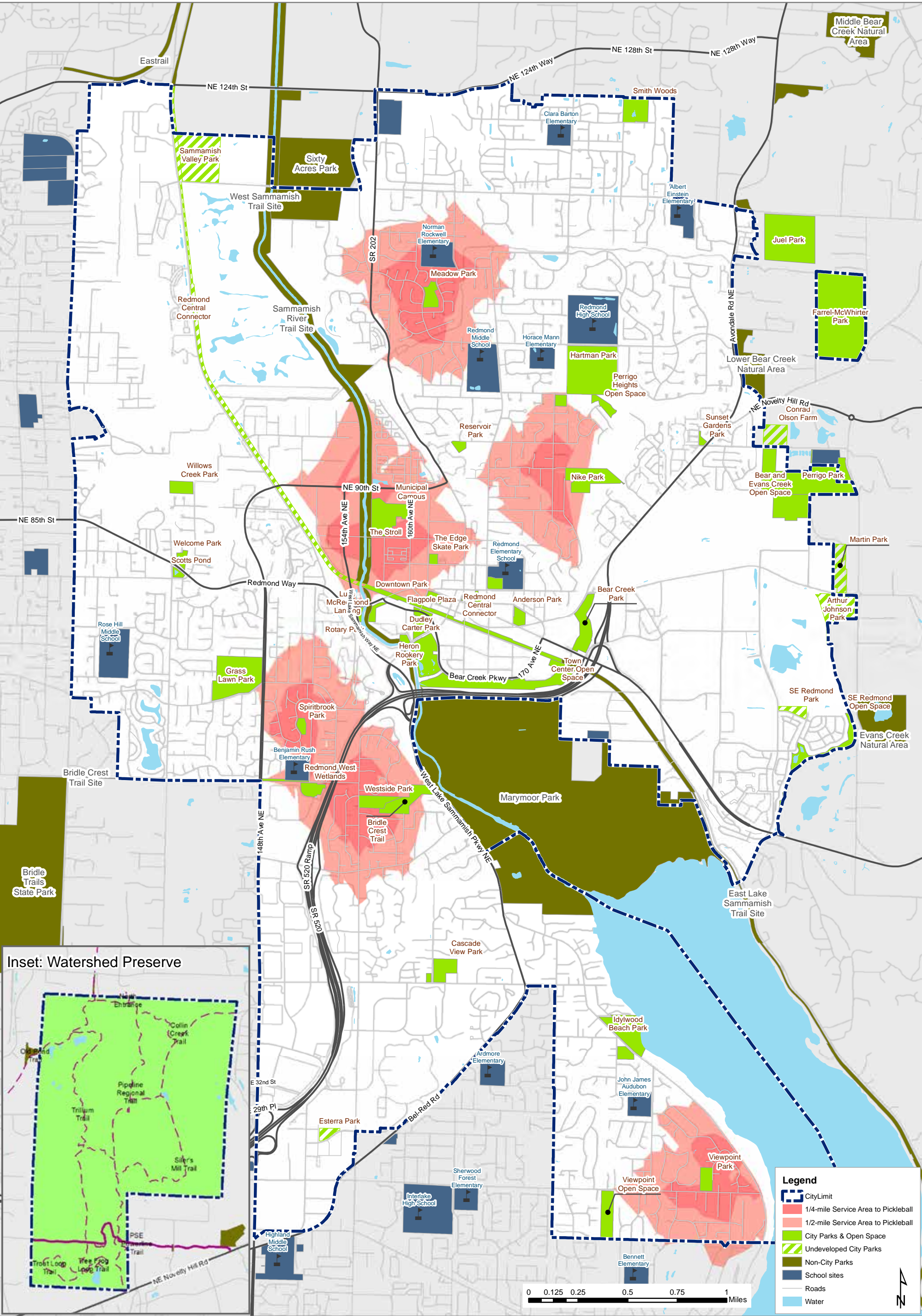
## Map 7: Travelsheds for All Urban Parks (to 1-mile)



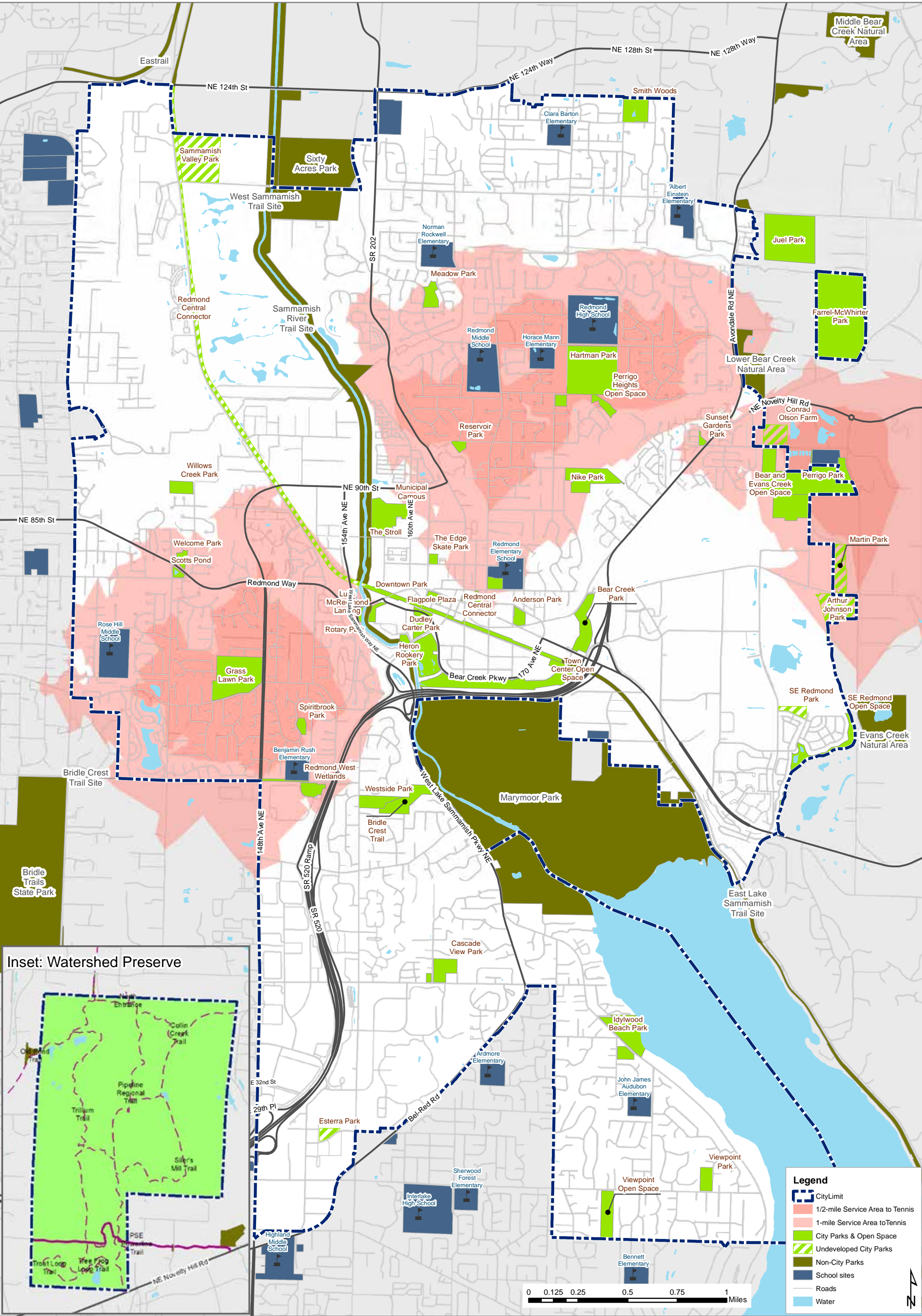
Map 8: Travelshed Composite - Developed & Undeveloped Parks (to 1/2-mile)



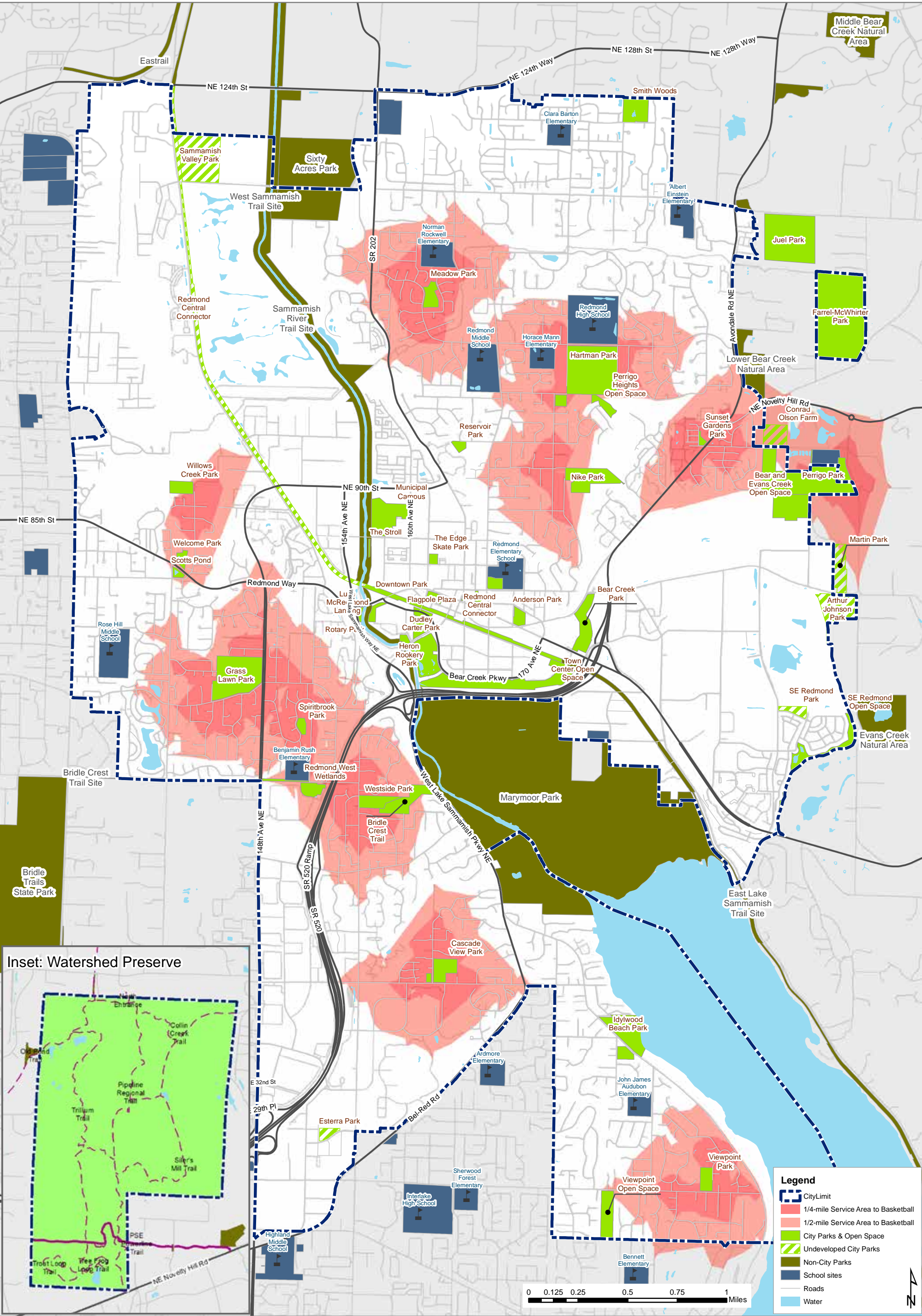
Map 10: Service Area to Playgrounds (1/4- & 1/2-mile)



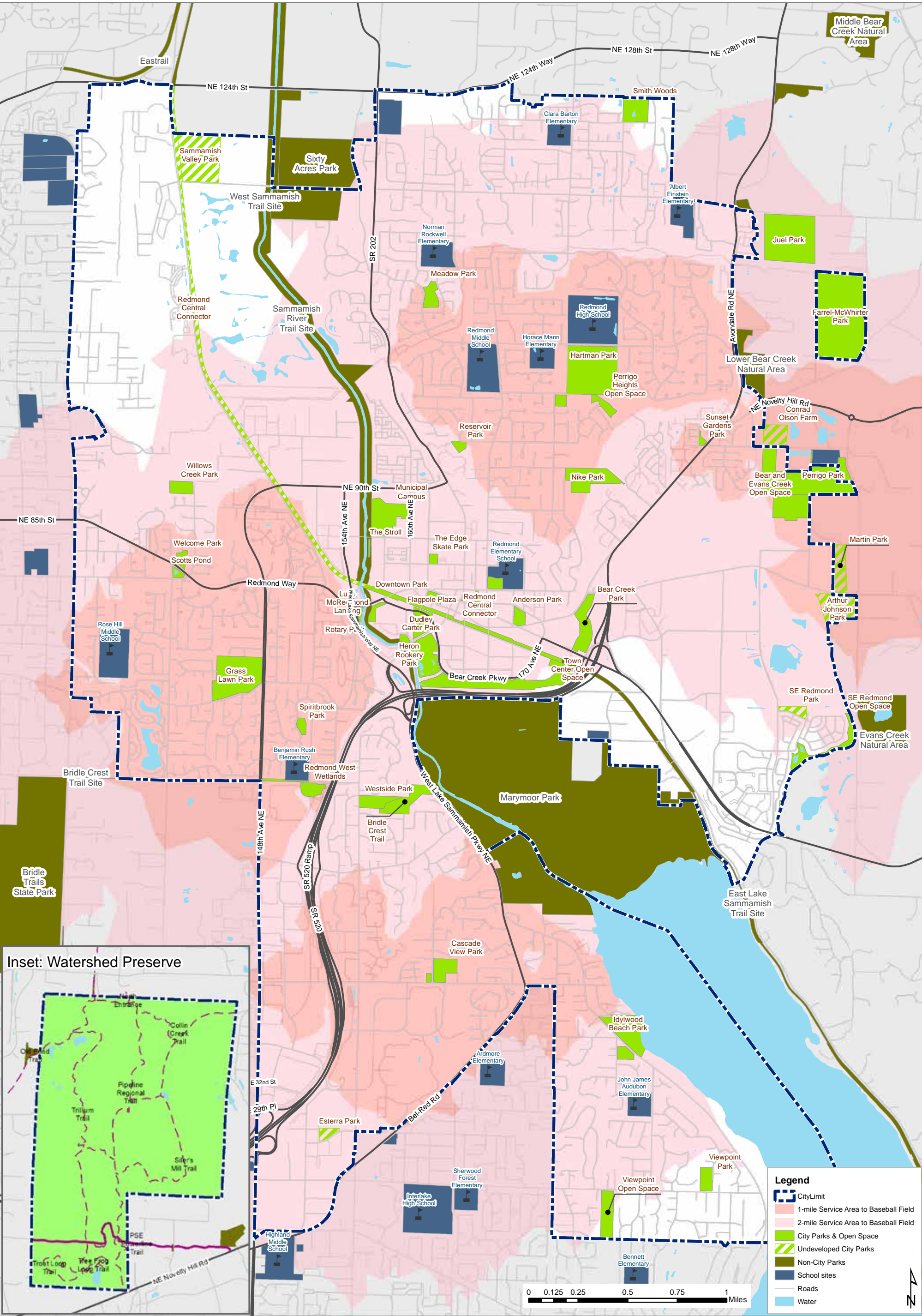
Map 11: Service Area to Pickleball Courts (1/4- & 1/2-mile)



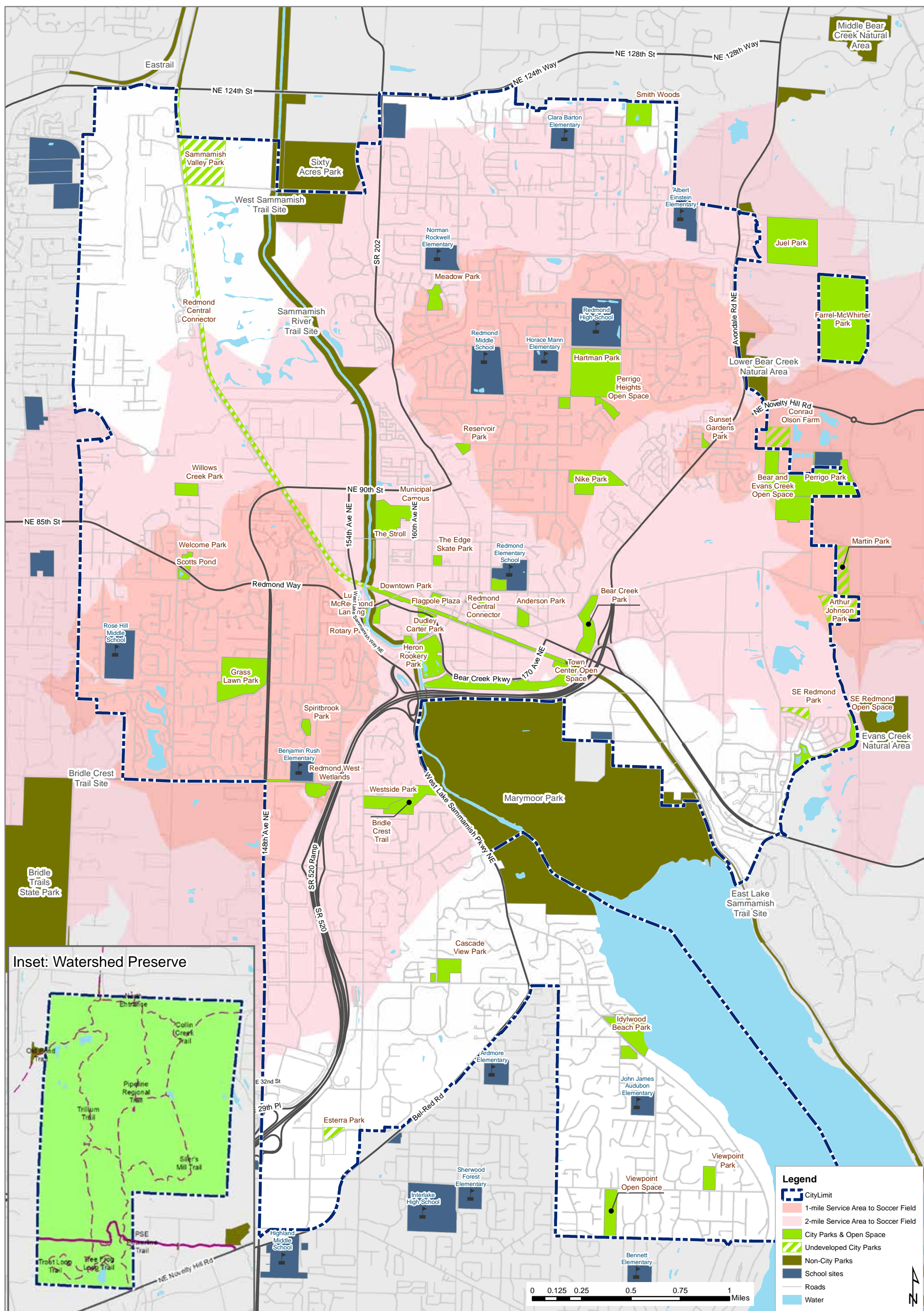
Map 12: Service Area to Tennis Courts (1/2- & 1-mile)



Map 13: Service Area to Basketball Courts (1/4- & 1/2-mile)



Map 14: Service Area to Baseball/Softball Fields (1- & 2-miles)



## Map 15: Service Area to Soccer Fields (1- & 2-miles)



