

February 27<sup>th</sup>, 2019

Kristi Wilson  
Interim Director of Public Works  
City of Redmond  
15670 NE 85<sup>th</sup> Street  
Redmond, WA, 98073

**Downtown Redmond Link Extension, Letter of Concurrence**  
**LOC 16 DRLE: NE 51<sup>st</sup> Street Utility Betterments & CFD Project No. 2 Interface**

**Purpose**

The purpose of this letter is to seek concurrence from the City of Redmond for the NE 51<sup>st</sup> Street utility betterments and the interface between the Downtown Redmond Link Extension project and the City of Redmond's CFD Project No. 2 – NE 51<sup>st</sup> Street Improvements project.

**NE 51st Street Utility Betterments**

The Downtown Redmond Link Extension project will add an additional 175 feet of 12" water main along with required appurtenances (tees, valves, etc.) to support the installation of a new 8" PRV station and vault for the City of Redmond. The new 8" PRV station will replace the existing PRV station located along the northern side of NE 51st St., approximately 210 feet east of the NE 51st St./SR 520 on/off-ramp intersection. This work will also include the installation of a new fire hydrant and lateral to help in set up and testing of the new 8" PRV station. The contractor shall install the PRV vault top elevation to match the grade of the sidewalk and install a gravity drain to the swale north of the PRV. Last, the DRLE Contractor will remove the existing PRV station and vault, then dispose of them as directed by the City of Redmond; this work will also include filling the existing 8" water main with CDF for abandonment by City of Redmond standards. The quantities for this betterment work are listed below:

- 175' 12" main
- 110' 8" main for PRV
- 25' 6" main for FH
- 1 8" PRV and vault per standard details 708, 709A, 709B, 710A, and 710B
- 1 FH
- 2 8" Gate Valves
- 2 12" Gate Valves
- 1 6" Gate Valve
- 2 cy yds CDF for 8" pipe abandonment
- Removal and dispose of existing 8" PRV

**CHAIR**

**John Marchione**  
*Redmond Mayor*

**VICE CHAIRS**

**Kent Keel**  
*University Place Mayor*

**Paul Roberts**  
*Everett Councilmember*

**BOARD MEMBERS**

**Nancy Backus**  
*Auburn Mayor*

**David Baker**  
*Kenmore Mayor*

**Claudia Balducci**  
*King County Council Vice Chair*

**Dow Constantine**  
*King County Executive*

**Bruce Dammeler**  
*Pierce County Executive*

**Jenny Durkan**  
*Seattle Mayor*

**Dave Earling**  
*Edmonds Mayor*

**Rob Johnson**  
*Seattle Councilmember*

**Joe McDermott**  
*King County Councilmember*

**Roger Millar**  
*Washington State Secretary of Transportation*

**Kim Roscoe**  
*Fife Mayor*

**Dave Somers**  
*Snohomish County Executive*

**Dave Upthegrove**  
*King County Councilmember*

**Peter von Reichbauer**  
*King County Councilmember*

**Victoria Woodards**  
*Tacoma Mayor*

**CHIEF EXECUTIVE OFFICER**

**Peter M. Rogoff**

## CFD Project No. 2 – NE 51st Street Improvements

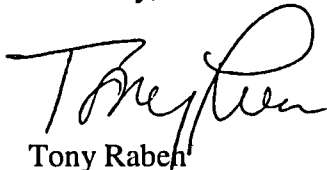
The City of Redmond is in the design phase of the CFD Project No. 2 – NE 51<sup>st</sup> Street Improvements project which improves the roadway, sidewalks, curb radii, curb ramps, traffic signal, illumination, utilities, and drainage along NE 51<sup>st</sup> Street at and near the intersection of NE 51<sup>st</sup> Street and the SR 520 on/off-ramps. The Design-Builder will complete the work shown in the Downtown Redmond Link Extension drawings with concurrence from the City of Redmond. See Attachment 1 for the description of work to be done by Sound Transit and the City of Redmond. The City of Redmond is responsible for completion of their street improvement project up to the interchange ramp terminals. The City of Redmond expects to go to construction in summer 2019, with an anticipated completion of fall 2020.

To facilitate completion of the portion of the City's project at the interface with Sound Transit's project prior to Sound Transit's work beginning at the interface, the City agrees to the following:

- Work in good faith to advertise their project for bid by April 2019.
- Include provisions in their 51<sup>st</sup> St. construction contract, such as milestones, liquidated damages, or other constraints, that will facilitate substantial completion of work at the interface by July 2020.
- Each month following NTP of the City's CFD Project No. 2, the City will assess the likeliness of substantially completing the work at the Sound Transit interface by July 2020 and take corrective action, if necessary, to ensure the milestone is met.
- In the event the City's project work at the interface is not completed by July 2020 or when Sound Transit's contractor desires to begin work, whichever is later, the City will work with ST to identify options to minimize cost or other impacts to Sound Transit's project.

The reconstruction of the interchange ramp terminal intersection will be completed by Sound Transit using the design concept provided by the City's 90% design submittal of 51<sup>st</sup>. Should you have any questions, please don't hesitate to contact me at (206) 398-5171. Please sign below and return one of the enclosed originals – please keep the additional copy for your records.

Sincerely,



Tony Raben  
Executive Project Director, DRLE

### Attachments:

1. NE 51<sup>st</sup> Street Improvements

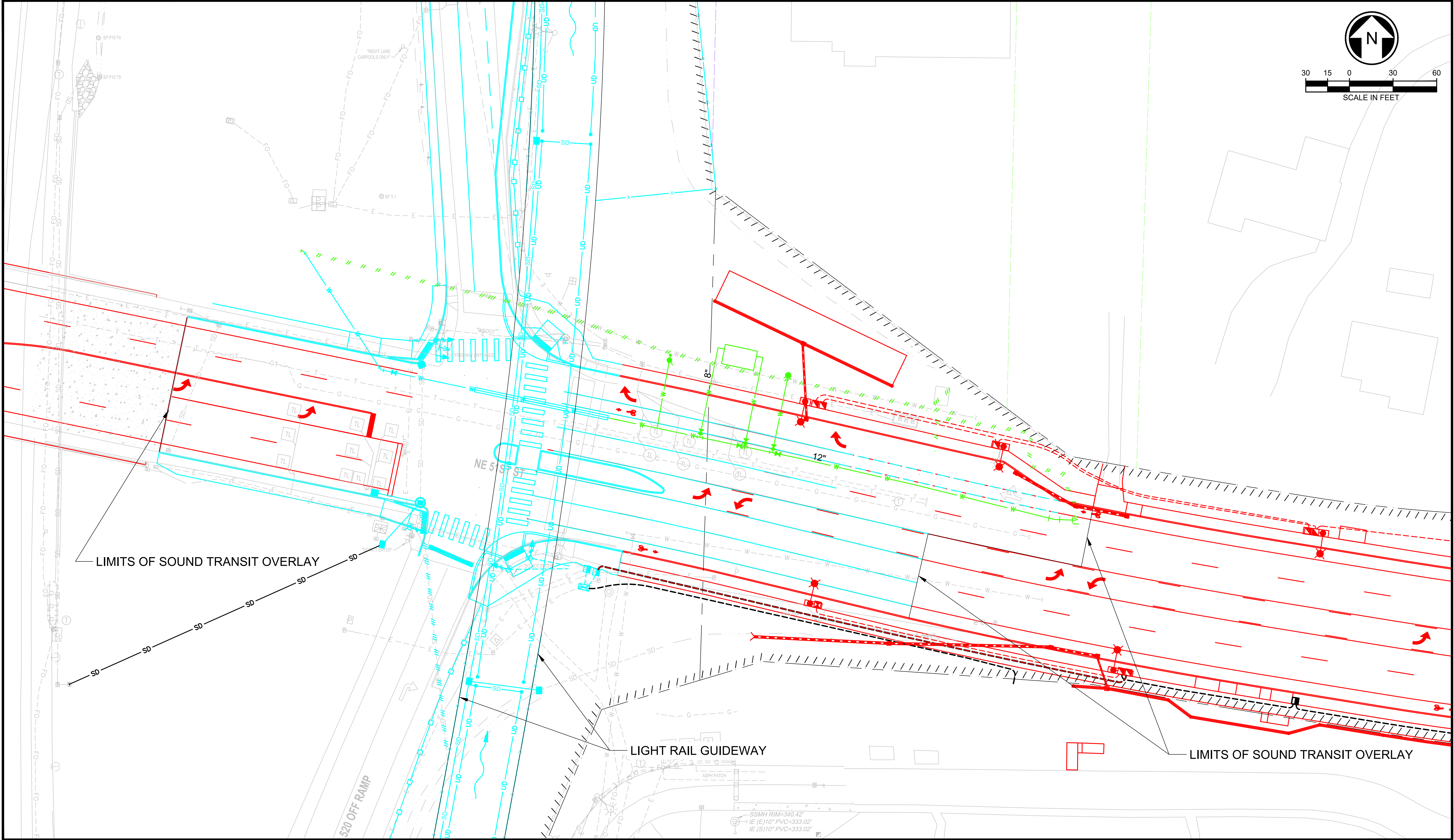
### Concurrence:

Kristi Wilson , 3/1/19  
Date

Kristi Wilson, Interim Director of Public Works  
City of Redmond

Enclosure (s):

cc: ST Document Control



**LEGEND**

— WORK DONE BY CITY OF REDMOND

— WORK DONE BY SOUND TRANSIT

— WORK DONE BY SOUND TRANSIT,  
PAID FOR BY CITY OF REDMOND

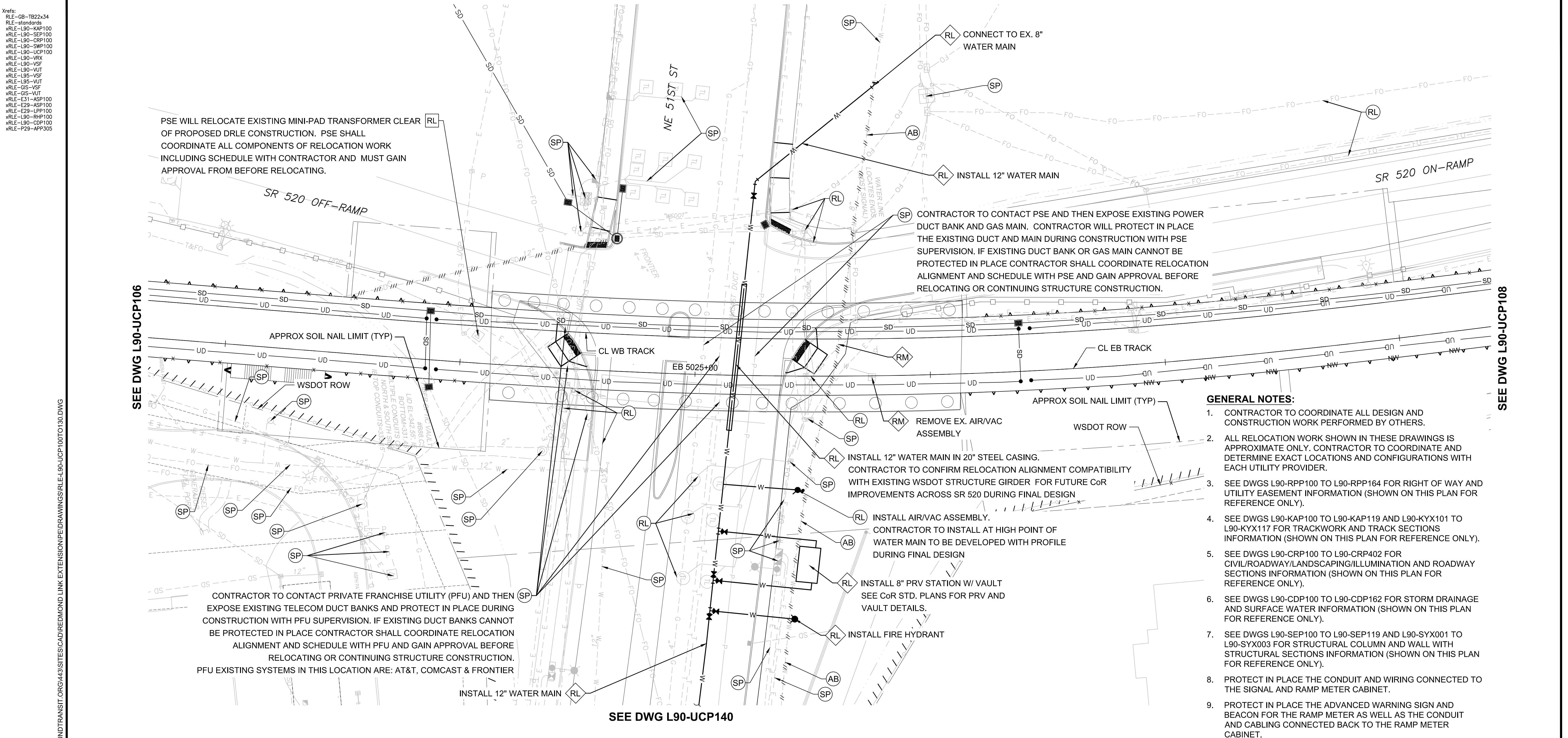


**ATTACHMENT 1**  
**NE 51ST ST IMPROVEMENTS**  
 DOWNTOWN REDMOND LINK EXTENSION



Xrefs:  
RLE--GB--TB22x34  
RLE--standards  
xRLE--L90--KAP100  
xRLE--L90--SEP100  
xRLE--L90--CRP100  
xRLE--L90--SWP100  
xRLE--L90--UCP100  
xRLE--L90--VRY  
xRLE--L90--VSF  
xRLE--L90--VUT  
xRLE--L95--VSF  
xRLE--L95--VUT  
xRLE--GIS--VSF  
xRLE--GIS--VUT  
xRLE--E31--ASP100  
xRLE--E29--ASP100  
xRLE--E29--LPP100  
xRLE--L90--RHP100  
xRLE--L90--CDP100  
xRLE--P29--APP305

09/27/18 | 11:33 AM | TYLER  
C:\USERS\PUBLIC\DOCUMENTS\TYLER\JHTTPS\SHAREPOINT\_SOUNDTRANSIT\ORGB443\SITES\CAD\REDMOND LINK EXTENSION\PE\DRAWINGS\RLE-L90-UCP100\T0130.DWG



EXISTING UTILITY INFORMATION:

- THE LOCATIONS OF THE EXISTING UTILITIES ARE APPROXIMATE AND WERE COMPILED FROM AVAILABLE INFORMATION PROVIDED BY PUBLIC AND PRIVATE UTILITY PROVIDERS, SOME FIELD SURVEY DATA, AND SITE OBSERVATIONS. THOUGH THIS COMPILATION REPRESENTS THE AVAILABLE INFORMATION OF EXISTING UTILITIES, THE INFORMATION PROVIDED HEREON MAY VARY FROM ACTUAL SIZES AND LOCATIONS.
- THE CONTRACTOR SHALL CONDUCT THEIR OWN RESEARCH AND INVESTIGATIONS WHICH IN THEIR PROFESSIONAL OPINION ARE NECESSARY TO EVALUATE THE ACCURACY OF THIS INFORMATION IN ADVANCE OF CONSTRUCTION WORK AND SUBSURFACE PENETRATIONS PERFORMED SO AS TO PREVENT THE IMPACT TO UTILITY SYSTEMS AND THEIR CUSTOMERS. SUCH WORK SHALL BE PERFORMED IN A MANNER CONSISTENT WITH THE ORDINARY STANDARD OF CARE.

- XX REFERENCE UTILITY WORK TO BE PERFORMED BY DESIGN-BUILD CONTRACTOR.
- XX WORK TO BE PERFORMED BY OTHERS (DESIGN-BUILD CONTRACTOR TO COORDINATE)
- XX PRESCRIPTIVE UTILITY WORK TO BE PERFORMED BY DESIGN-BUILD CONTRACTOR

RL = RELOCATE EXISTING UTILITY OR INSTALL NEW

SP = SUPPORT/PROTECT DURING CONSTRUCTION (MEANS AND METHODS TO BE DETERMINED BY THE DESIGN-BUILD CONTRACTOR AND UTILITY OWNER)

AD = ADJUST TO NEW GRADE

RM = REMOVE

AB = ABANDON IN PLACE (DESIGN-BUILD CONTRACTOR TO VERIFY IF ABANDONMENT IN PLACE IS ACCEPTABLE TO UTILITY OR CITY OF REDMOND)

GENERAL NOTES:

- CONTRACTOR TO COORDINATE ALL DESIGN AND CONSTRUCTION WORK PERFORMED BY OTHERS.
- ALL RELOCATION WORK SHOWN IN THESE DRAWINGS IS APPROXIMATE ONLY. CONTRACTOR TO COORDINATE AND DETERMINE EXACT LOCATIONS AND CONFIGURATIONS WITH EACH UTILITY PROVIDER.
- SEE DWGS L90-RPP100 TO L90-RPP164 FOR RIGHT OF WAY AND UTILITY EASEMENT INFORMATION (SHOWN ON THIS PLAN FOR REFERENCE ONLY).
- SEE DWGS L90-KAP100 TO L90-KAP119 AND L90-KYX101 TO L90-KYX117 FOR TRACKWORK AND TRACK SECTIONS INFORMATION (SHOWN ON THIS PLAN FOR REFERENCE ONLY).
- SEE DWGS L90-CRP100 TO L90-CRP402 FOR CIVIL/ROADWAY/LANDSCAPING/ILLUMINATION AND ROADWAY SECTIONS INFORMATION (SHOWN ON THIS PLAN FOR REFERENCE ONLY).
- SEE DWGS L90-CDP100 TO L90-CDP162 FOR STORM DRAINAGE AND SURFACE WATER INFORMATION (SHOWN ON THIS PLAN FOR REFERENCE ONLY).
- SEE DWGS L90-SEP100 TO L90-SEP119 AND L90-SYX001 TO L90-SYX003 FOR STRUCTURAL COLUMN AND WALL WITH STRUCTURAL SECTIONS INFORMATION (SHOWN ON THIS PLAN FOR REFERENCE ONLY).
- PROTECT IN PLACE THE CONDUIT AND WIRING CONNECTED TO THE SIGNAL AND RAMP METER CABINET.
- PROTECT IN PLACE THE ADVANCED WARNING SIGN AND BEACON FOR THE RAMP METER AS WELL AS THE CONDUIT AND CABLING CONNECTED BACK TO THE RAMP METER CABINET.

CONCEPTUAL DESIGN

CONFORMED SET

DESIGNED BY:  
M. AUSTIN  
DRAWN BY:  
J. TYLER  
CHECKED BY:  
D. PROCTOR  
APPROVED BY:  
Y. YANG



Parametrix  
ENGINEERING · PLANNING · ENVIRONMENTAL SCIENCES

SUBMITTED BY:  
BRAD PHILLIPS

DATE:  
09/24/2018

REVIEWED BY:



DATE:

SCALE:  
1" = 20'  
FILENAME:  
RLE-L90-UCP100T0130  
CONTRACT No.:  
CN 0148-18  
DATE:  
03/29/2019

DOWNTOWN REDMOND LINK EXTENSION  
RTS TO DOWNTOWN REDMOND

PRESCRIPTIVE/REFERENCE

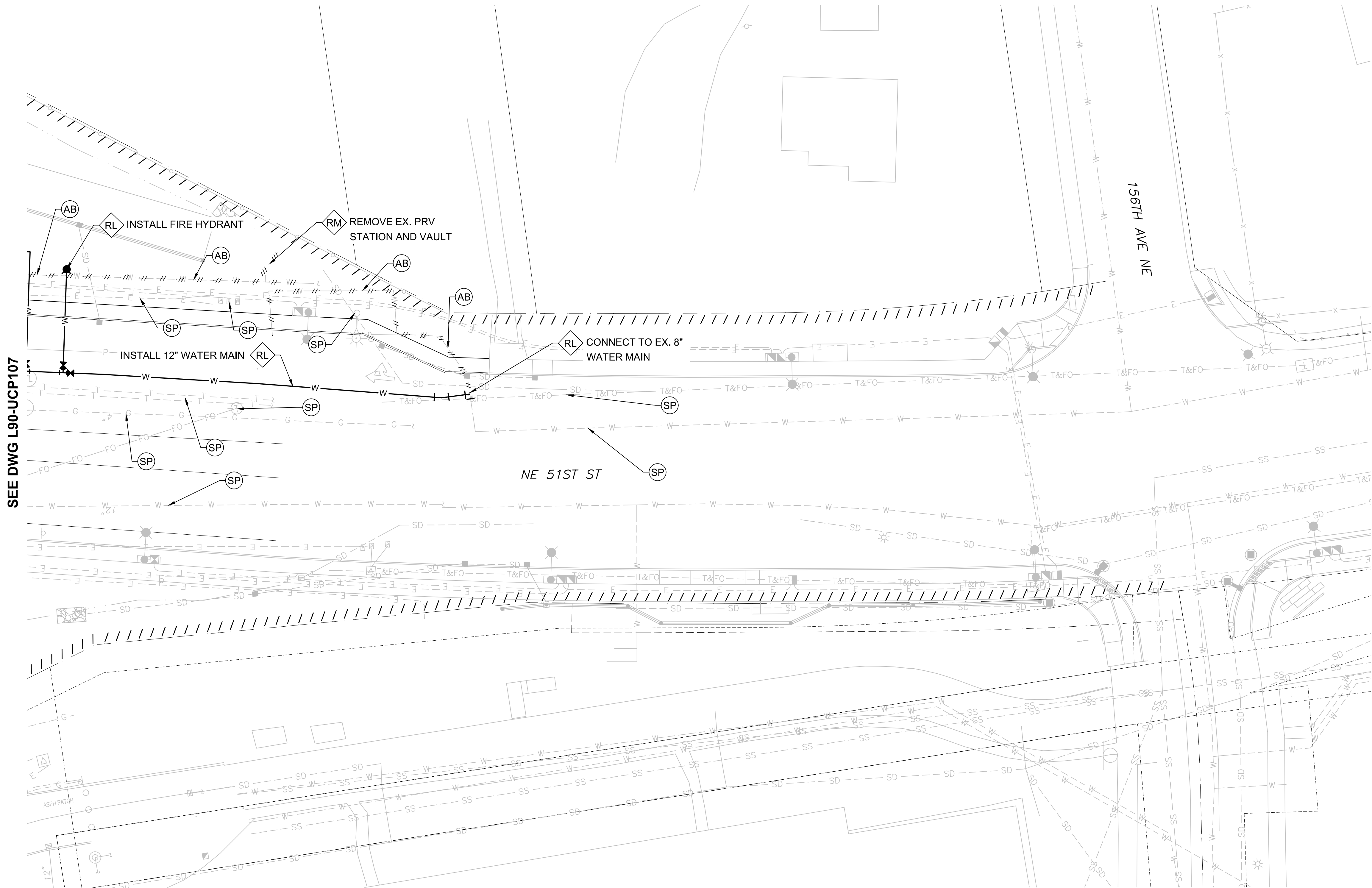
COMPOSITE UTILITIES PLAN  
EB STA 5023+00 TO EB STA 5028+00

DRAWING No.:  
L90-UCP107

LOCATION ID:

SHEET No.:  
250  
REV:

Xrefs:  
RLE--GB--TB22x34  
RLE--standards  
xRLE--L90--KAP100  
xRLE--L90--SEP100  
xRLE--L90--CRP100  
xRLE--L90--SWP100  
xRLE--L90--UCP100  
xRLE--L90--VRY  
xRLE--L90--VSF  
xRLE--L90--VUT  
xRLE--L95--VSF  
xRLE--L95--VUT  
xRLE--GIS--VSF  
xRLE--GIS--VUT  
xRLE--E31--ASP100  
xRLE--E29--ASP100  
xRLE--E29--LPP100  
xRLE--L90--RHP100  
xRLE--L90--CDP100  
xRLE--P29--APP305



- GENERAL NOTES:**
1. CONTRACTOR TO COORDINATE ALL DESIGN AND CONSTRUCTION WORK PERFORMED BY OTHERS.
  2. ALL RELOCATION WORK SHOWN IN THESE DRAWINGS IS APPROXIMATE ONLY. CONTRACTOR TO COORDINATE AND DETERMINE EXACT LOCATIONS AND CONFIGURATIONS WITH EACH UTILITY PROVIDER.
  3. SEE DWGS L90-RPP100 TO L90-RPP164 FOR RIGHT OF WAY AND UTILITY EASEMENT INFORMATION (SHOWN ON THIS PLAN FOR REFERENCE ONLY).
  4. SEE DWGS L90-KAP100 TO L90-KAP119 AND L90-KYX101 TO L90-KYX117 FOR TRACKWORK AND TRACK SECTIONS INFORMATION (SHOWN ON THIS PLAN FOR REFERENCE ONLY).
  5. SEE DWGS L90-CRP100 TO L90-CRP402 FOR CIVIL/ROADWAY/LANDSCAPING/ILLUMINATION AND ROADWAY SECTIONS INFORMATION (SHOWN ON THIS PLAN FOR REFERENCE ONLY).
  6. SEE DWGS L90-CDP100 TO L90-CDP162 FOR STORM DRAINAGE AND SURFACE WATER INFORMATION (SHOWN ON THIS PLAN FOR REFERENCE ONLY).
  7. SEE DWGS L90-SEP100 TO L90-SEP119 AND L90-SYX001 TO L90-SYX003 FOR STRUCTURAL COLUMN AND WALL WITH STRUCTURAL SECTIONS INFORMATION (SHOWN ON THIS PLAN FOR REFERENCE ONLY).

**EXISTING UTILITY INFORMATION:**

1. THE LOCATIONS OF THE EXISTING UTILITIES ARE APPROXIMATE AND WERE COMPILED FROM AVAILABLE INFORMATION PROVIDED BY PUBLIC AND PRIVATE UTILITY PROVIDERS, SOME FIELD SURVEY DATA, AND SITE OBSERVATIONS. THOUGH THIS COMPILATION REPRESENTS THE AVAILABLE INFORMATION OF EXISTING UTILITIES, THE INFORMATION PROVIDED HEREON MAY VARY FROM ACTUAL SIZES AND LOCATIONS.
2. THE CONTRACTOR SHALL CONDUCT THEIR OWN RESEARCH AND INVESTIGATIONS WHICH IN THEIR PROFESSIONAL OPINION ARE NECESSARY TO EVALUATE THE ACCURACY OF THIS INFORMATION IN ADVANCE OF CONSTRUCTION WORK AND SUBSURFACE PENETRATIONS PERFORMED SO AS TO PREVENT THE IMPACT TO UTILITY SYSTEMS AND THEIR CUSTOMERS. SUCH WORK SHALL BE PERFORMED IN A MANNER CONSISTENT WITH THE ORDINARY STANDARD OF CARE.

- (XX) REFERENCE UTILITY WORK TO BE PERFORMED BY DESIGN-BUILD CONTRACTOR.
- (XX) WORK TO BE PERFORMED BY OTHERS (DESIGN-BUILD CONTRACTOR TO COORDINATE)
- (XX) PRESCRIPTIVE UTILITY WORK TO BE PERFORMED BY DESIGN-BUILD CONTRACTOR

RL = RELOCATE EXISTING UTILITY OR INSTALL NEW

SP = SUPPORT/PROTECT DURING CONSTRUCTION (MEANS AND METHODS TO BE DETERMINED BY THE DESIGN-BUILD CONTRACTOR AND UTILITY OWNER)

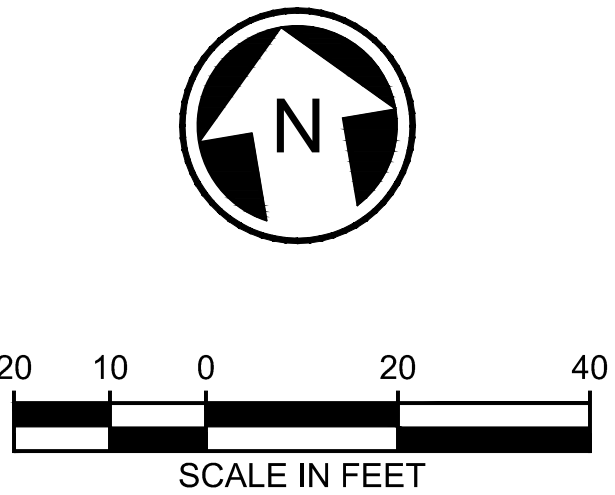
AD = ADJUST TO NEW GRADE

RM = REMOVE

AB = ABANDON IN PLACE (DESIGN-BUILD CONTRACTOR TO VERIFY IF ABANDONMENT IN PLACE IS ACCEPTABLE TO UTILITY OR CITY OF REDMOND)

PRELIMINARY  
ENGINEERING

NOT FOR  
CONSTRUCTION



**CONCEPTUAL DESIGN**

**CONFORMED SET**

DESIGNED BY:  
M. AUSTIN  
DRAWN BY:  
J. TYLER  
CHECKED BY:  
D. PROCTOR  
APPROVED BY:  
Y. YANG



**Parametrix**  
ENGINEERING · PLANNING · ENVIRONMENTAL SCIENCES

SUBMITTED BY:  
BRAD PHILLIPS

DATE:  
09/24/2018

REVIEWED BY:



DATE:

SCALE:  
1" = 20'  
FILENAME:  
RLE-L90-UCP131TO164  
CONTRACT No.:  
CN 0148-18  
DATE:  
03/29/2019

**DOWNTOWN REDMOND LINK EXTENSION  
RTS TO DOWNTOWN REDMOND**

**PRESCRIPTIVE/REFERENCE**

COMPOSITE UTILITIES PLAN  
NE 51ST ST

DRAWING No.:  
**L90-UCP140**  
LOCATION ID:  
SHEET No.:  
283  
REV: