

VICINITY MAP

Project Site:
Hartman Park
17300 NE 104th St
Redmond, WA 98052



PROJECT AREA

CITY OF REDMOND

HARTMAN PARK FIELDS #5 AND #6 SYNTHETIC TURF REPLACEMENT



SITE PLAN

Owner

City of Redmond
Department of Parks and Recreation
18120 NE 76th St
Redmond, WA 98052
(425) 556-2300 Phone

Prime Consultant

D.A. Hogan & Associates, Inc.
119 1st Avenue S., Suite 110
Seattle, WA 98104
(206) 285-0400 Phone

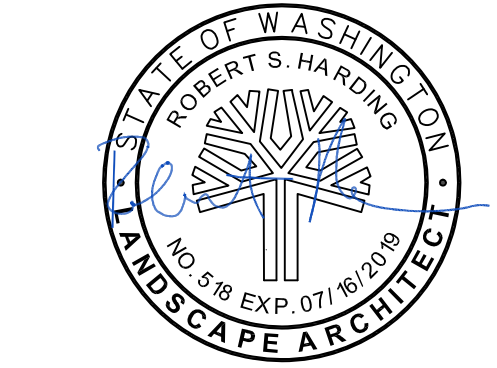
Drawing Index

F-0.0	Cover & Index Sheet
F-0.1	Demolition Plan
F-0.2	Demolition Details
F-1.0	Layout Plan
F-1.1	Drainage Plan
F-2.1	Typical Sections & Details
F-2.2	Softball Field Details
F-2.3	Drainage Details
F-3.1	Composite Layout Plan
F-3.2	Soccer Layout and Details
F-3.3	Softball Layout and Details

REVISION	DATE



HARTMAN PARK FIELDS #5 AND #6 SYNTHETIC TURF REPLACEMENT

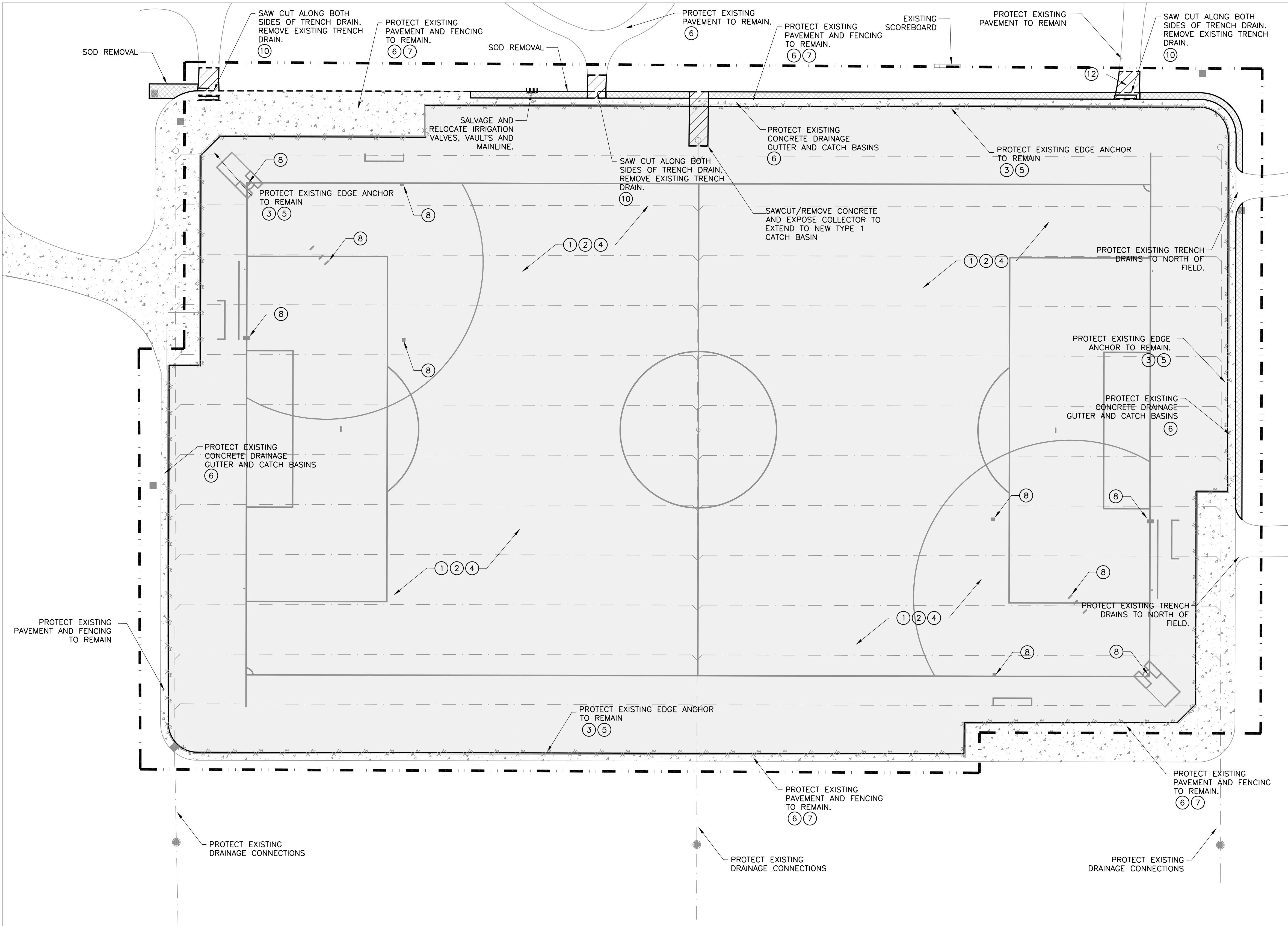


BID SET	
DATE	06/14/19
SCALE	NTS
DRAWN	REF
CHECKED	RSH
COPYRIGHT © 2019 D.A. HOGAN & ASSOCIATES	

COVER & INDEX SHEET

SHEET
F-0.0

File: F-0.1 Hartman Park CURRENT 24x36.dwg Plotted by: DominiqueD Date: 13-Jun-19 10:20:57am



DEMOLITION LEGEND

	EXISTING SYNTHETIC TURF TO BE REMOVED AND DISPOSED OF OFF SITE
	EXISTING SOIL/SOD TO BE REMOVED TO ACCOMMODATE TRENCH DRAIN AND PAVING
	EXISTING SYNTHETIC TURF TO BE REMOVED AND DISPOSED OF OFF SITE
	EXISTING EDGE ANCHOR
	LIMIT OF WORK
	SAWCUT LINE
	EXISTING CHAINLINK FENCING TO REMAIN

DEMOLITION NOTES

- (INDICATES GENERAL CONSTRUCTION NOTE)
- (INDICATES SPECIFIC CONSTRUCTION KEYNOTE)
- REMOVE ALL EXISTING SYNTHETIC TURF AND INFILL AND DISPOSE OF OFF SITE. THE CONTRACTOR IS ENCOURAGED TO MAKE EVERY EFFORT TO RECYCLE THE VARIOUS COMPONENTS OF THE EXISTING SYNTHETIC TURF SURFACING SYSTEM. EXISTING TURF IS A SAND AND RUBBER INFILLED TURF INSTALLED OVER A PERMEABLE AGGREGATE BASE.
- THE CONTRACTOR SHALL UTILIZE EXTREME CARE DURING TURF REMOVAL TO PROTECT EXISTING PERMEABLE AGGREGATE BASE TO REMAIN. IT IS STRONGLY RECOMMENDED THAT ALL CONSTRUCTION TRAFFIC ASSOCIATED WITH THE TURF REMOVAL OCCUR ON THE EXISTING SYNTHETIC TURF TO PROTECT THE EXISTING PERMEABLE AGGREGATE. DISTURBED OR SEGREGATED PERMEABLE AGGREGATE MATERIALS SHALL BE REMOVED AND REPLACED WITH NEW TOP COURSE AGGREGATE AS DIRECTED BY THE ENGINEER.
- PROTECT EXISTING EDGE ANCHOR SYSTEM AND PERIMETER FROM DAMAGE AROUND ENTIRE PERIMETER OF EXISTING PLAYFIELD. EDGE ANCHOR SHALL BE CHECKED FOR DAMAGE BY CONTRACTOR AND ENGINEER BEFORE INSTALLATION OF SUPPLEMENTAL PAD.
- PRIOR TO INSTALLATION OF THE SUPPLEMENTAL PAD AND INFILLED SYNTHETIC TURF SYSTEM THE EXISTING BASE SHALL BE CHECKED FOR PLANARITY BY THE CONTRACTOR AND ENGINEER. THE CONTRACTOR SHALL PERFORM A STRING-LINE INSPECTION OF THE EXISTING PERMEABLE AGGREGATE BASE ON 5 FOOT CENTERS IN TWO DIRECTIONS AND SHALL DOCUMENT ALL AREAS THAT EXCEED 1/4 INCH IN 10 FEET. THE AREAS OF THE EXISTING PERMEABLE AGGREGATE THAT DO NOT CONFORM WITH THE SURFACE TOLERANCES SHALL BE CORRECTED BY SCREEDING A WASHED PLASTER SAND ACROSS THE SURFACE OF THE EXISTING PERMEABLE AGGREGATE. FOR BIDDING PURPOSES, THE CONTRACTOR SHALL ASSUME APPROXIMATELY 9,000 SF OF AREA WILL REQUIRE CORRECTIVE WORK WITH AN AVERAGE DEPTH OF 3/8 OF AN INCH OF SAND. THIS ALLOWANCE DOES NOT INCLUDE ANY AGGREGATE DISPLACEMENT RESULTING FROM THE TURF REMOVAL. AFTER COMPLETION OF THE CORRECTIVE WORK, THE CONTRACTOR SHALL SCHEDULE AN INSPECTION WITH THE ENGINEER PRIOR TO COMMENCING WITH INSTALLATION OF THE NEW SUPPLEMENTAL PAD AND INFILLED SYNTHETIC TURF SYSTEM.
- FOR PURPOSES OF BIDDING, CONTRACTOR SHALL ASSUME REMOVAL AND REPLACEMENT OF 500 LF OF EDGE ANCHOR/NAILER.
- PROTECT EXISTING PAVED SURFACES FROM DAMAGE DURING CONSTRUCTION.
- EXISTING FENCE SHALL REMAIN IN PLACE. AT THE CONTRACTOR'S OPTION, THE EXISTING RAILS AND FABRIC MAY BE REMOVED TO FACILITATE THE REMOVAL AND INSTALLATION OF THE SYNTHETIC TURF SYSTEM. RAILS AND FABRIC TO BE PROTECTED DURING CONSTRUCTION AND REINSTALLED FOLLOWING THE INSTALLATION OF THE TURF.
- EXISTING BASE ANCHOR ASSEMBLIES FOR 60' BASE PATH, HOME PLATE AND PITCHER'S PLATE TO BE REMOVED AND REPLACED.
- PROTECT EXISTING CATCH BASINS TO REMAIN DURING CONSTRUCTION. INSTALL TESC MEASURES AROUND RIMS AND MAINTAIN THROUGHOUT CONSTRUCTION. CLEAN DEBRIS FROM DRAINAGE SYSTEM BASINS WITHIN THE LIMIT OF WORK.
- SAW CUT ON BOTH OF SIDE OF TRENCH DRAINS TO WEST OF FIELD. REMOVE EXISTING TRENCH DRAIN AND BACKFILL VOID WITH CRUSHED SURFACING TOP COURSE AND COMPACT TO 95%.
- CONTRACTOR SHALL FIELD VERIFY LOCATIONS OF ALL EXISTING CONDITIONS.
- SAWCUT AND REMOVE EXISTING PAVEMENT DOWN TO EXISTING CONCRETE WALKWAY.



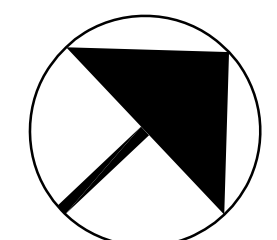
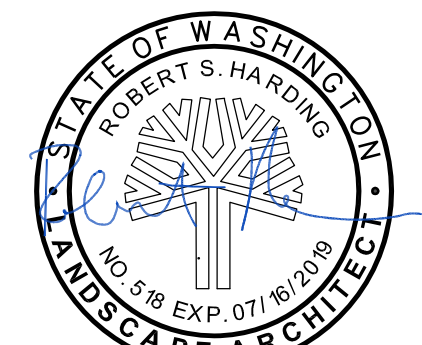
REVISION	DATE



HARTMAN PARK FIELDS #5 AND #6 SYNTHETIC TURF REPLACEMENT



119 1st Avenue South, Suite 110
Seattle, Washington 98104
P. 206.285.0600
F. 206.285.0480



NORTH
0 20' 40'
SCALE: 1" = 20'

BID SET

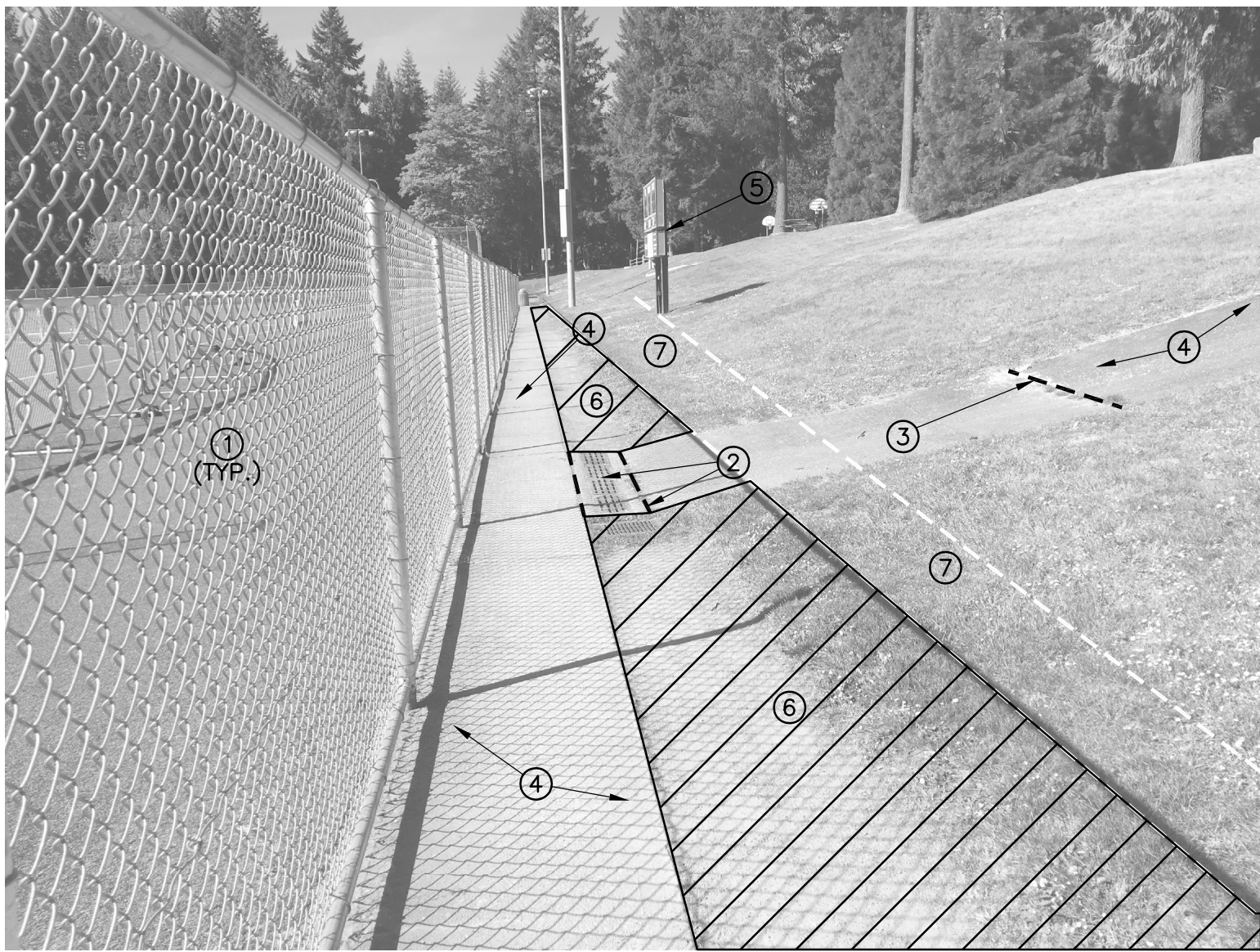
DATE	06/14/19
SCALE	1"=20'
DRAWN	REF
CHECKED	RSH
COPYRIGHT © 2019 D.A. HOGAN & ASSOCIATES	

DEMOLITION PLAN

SHEET

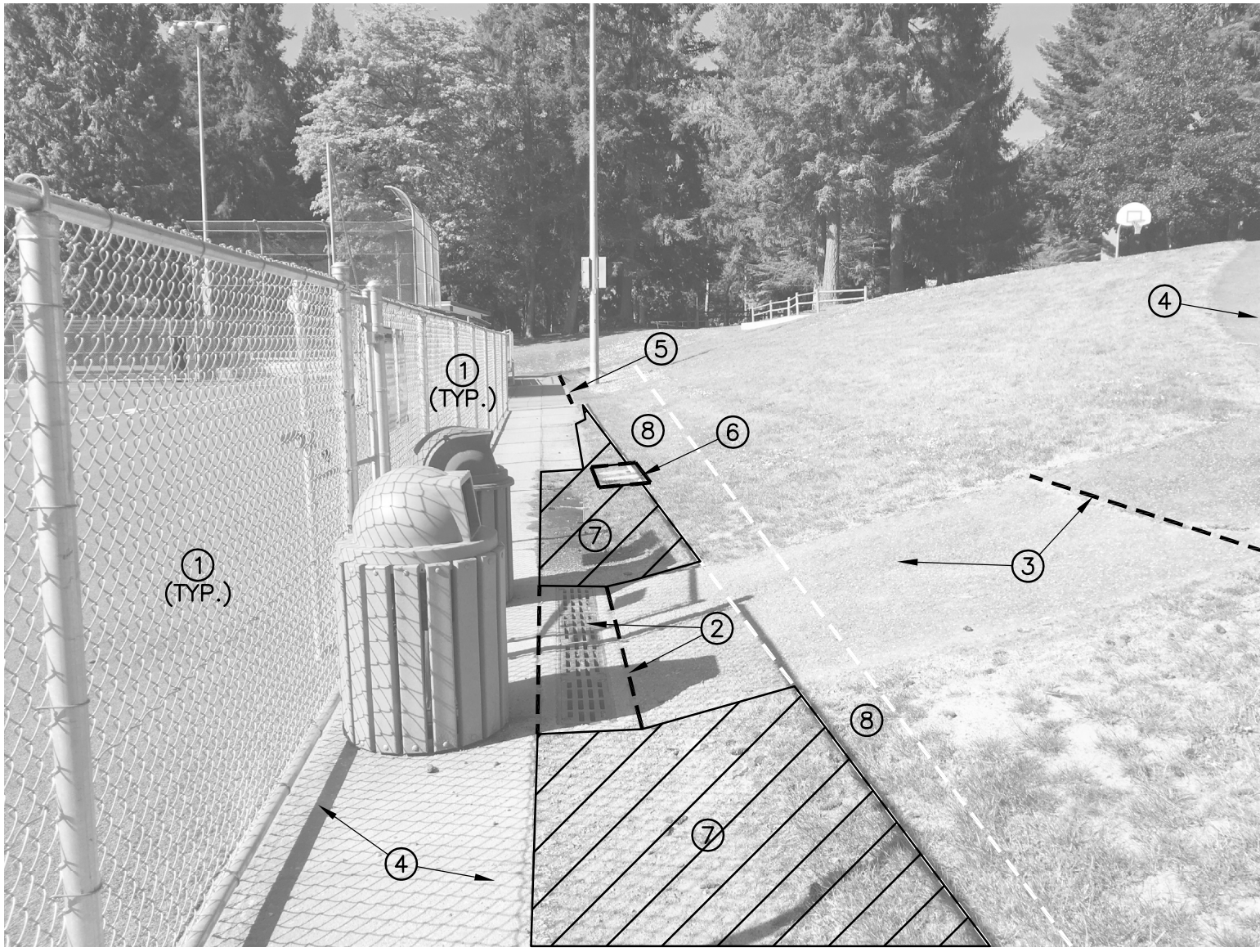
F-0.1

File: F-0.2 Demolition Details.dwg Plotted by: DominiqueD Date: 13-Jun-19 12:41:38pm



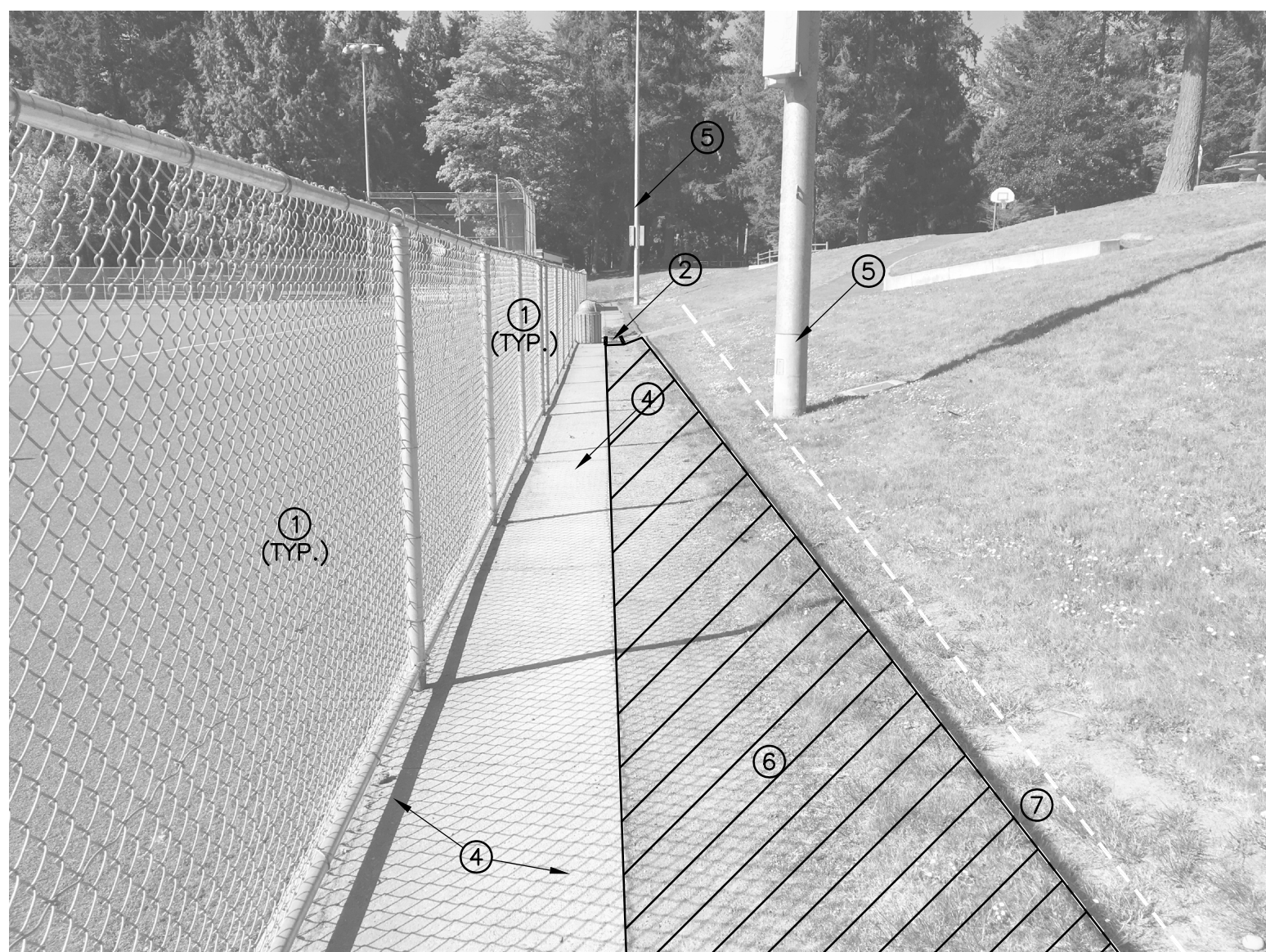
- NOTES:
- ① PROTECT EXISTING CHAIN LINK FENCE TO REMAIN.
 - ② SAWCUT CONCRETE SURROUND AND REMOVE EXISTING TRENCH DRAIN.
 - ③ SAWCUT AND REMOVE EXISTING ASPHALT FOR REGRADING OF HILLSIDE.
 - ④ PROTECT EXISTING PAVEMENT TO REMAIN.
 - ⑤ EXISTING SCOREBOARD TO REMAIN.
 - ⑥ REMOVE
 - ⑦ 4.5' GRADE TRANSITION/RESOD

1 EAST PATHWAY CONNECTION
F-0.2 NOT TO SCALE



- NOTES:
- ① PROTECT EXISTING CHAIN LINK FENCE TO REMAIN.
 - ② SAWCUT CONCRETE SURROUND AND REMOVE EXISTING TRENCH DRAIN.
 - ③ SAWCUT AND REMOVE EXISTING ASPHALT FOR REGRADING OF HILLSIDE.
 - ④ PROTECT EXISTING PAVEMENT TO REMAIN.
 - ⑤ SAWCUT EDGE OF EXISTING CONCRETE TO ALIGN WITH NEW CONCRETE PAVEMENT TO THE EAST.
 - ⑥ SALVAGE AND RELOCATE EXISTING IRRIGATION VALVES, VAULT BOXES AND IRRIGATION MAINLINE.
 - ⑦ REMOVE
 - ⑧ 4.5' GRADE TRANSITION/RESOD

2 CENTER PATHWAY CONNECTION
F-0.2 NOT TO SCALE



- NOTES:
- ① PROTECT EXISTING CHAIN LINK FENCE TO REMAIN.
 - ② SAWCUT CONCRETE SURROUND AND REMOVE EXISTING TRENCH DRAIN.
 - ③ SAWCUT AND REMOVE EXISTING ASPHALT FOR REGRADING OF HILLSIDE.
 - ④ PROTECT EXISTING PAVEMENT TO REMAIN.
 - ⑤ PROTECT EXISTING FIELD LIGHTING.
 - ⑥ REMOVE
 - ⑦ 4.5' GRADE TRANSITION/RESOD

3 NORTH WALKWAY
F-0.2 NOT TO SCALE

REVISION	DATE



HARTMAN PARK FIELDS #5 AND #6 SYNTHETIC TURF REPLACEMENT

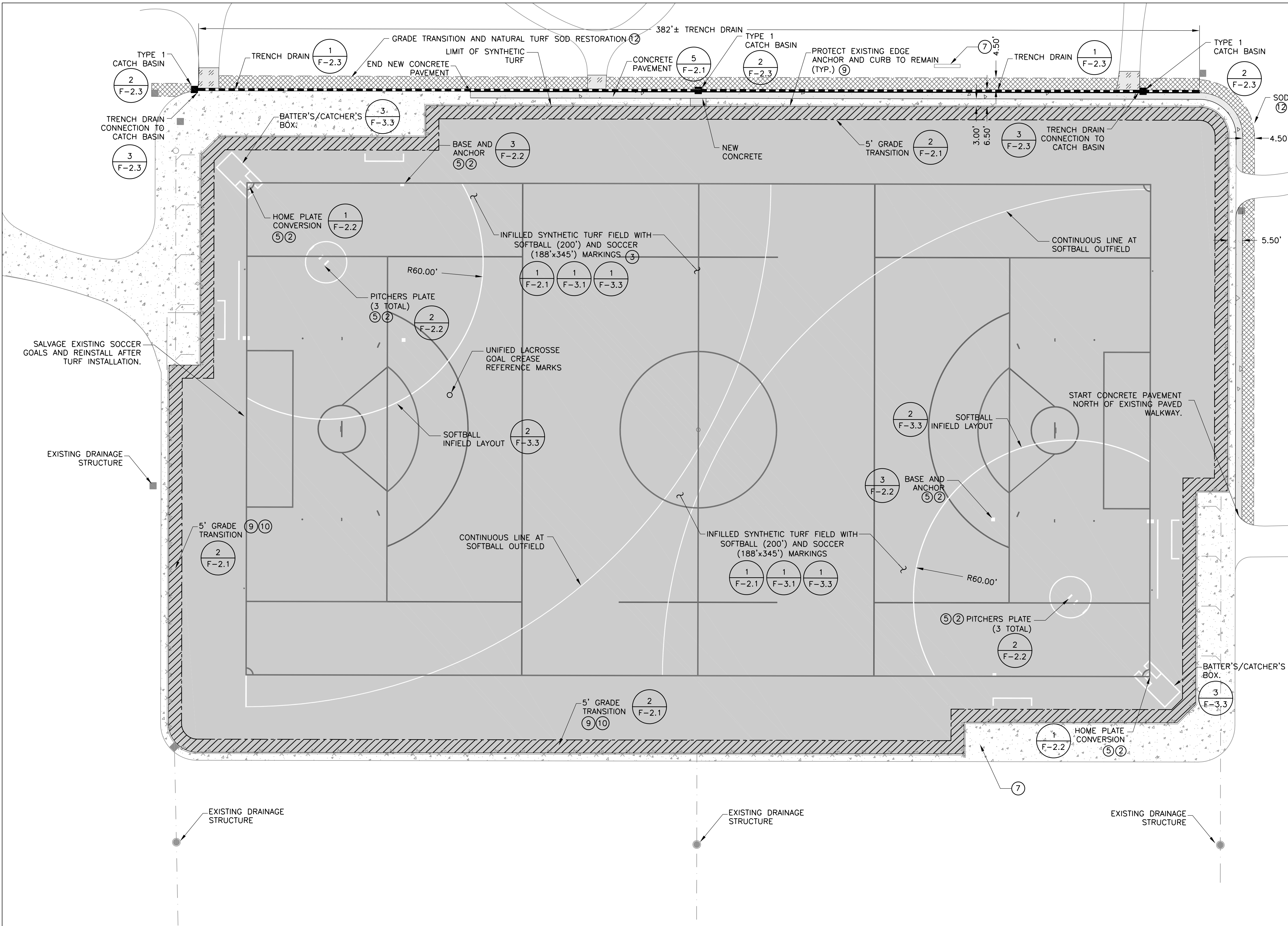


BID SET	
DATE	06/14/19
SCALE	NOT TO SCALE
DRAWN	REF
CHECKED	RSH
COPYRIGHT © 2019 D.A. HOGAN & ASSOCIATES	

DEMOLITION DETAILS

SHEET
F-0.2

File: F-0.1 Hartman Park CURRENT 24x35.dwg Plotted by: DominiqueD Date: 14-Jun-19 9:32:50am



LAYOUT NOTES

1. (INDICATES GENERAL CONSTRUCTION NOTE)
3. (INDICATES SPECIFIC CONSTRUCTION KEYNOTE)

- THE CONTRACTOR SHALL SECURE ANY AREAS WITH 6 FOOT HIGH TEMPORARY CHAINLINK FENCING IF NOT ALREADY SECURED BY EXISTING FENCE.
- PRIOR TO INSTALLATION OF ANY IMPROVEMENTS, CONTRACTOR SHALL ACCURATELY SURVEY AND FIELD CONFIRM THE LOCATION OF HOME PLATE, 1ST/, 2ND/ AND 3RD/ BASE, FOUL POLE AND FOUL LINES ON EACH SOFTBALL FIELD. CONFIRMATION AND SUBSEQUENT CONSTRUCTION, INCLUDING INSTALLATION OF NEW BASES AND PLATES, SHALL ENSURE THAT FIRST AND THIRD BASE LINES RESULT IN AN INTERNAL 90 DEGREE ANGLE, AND THAT LOCATION OF FOUL POLES REPRESENT A TRUE EXTENSION OF EACH FOUL LINE.
- CONTRACTOR SHALL FIELD VERIFY SYNTHETIC TURF SURFACING DIMENSIONS TO MATCH EXISTING FIELD. SEE SYNTHETIC TURF COMPOSITE LAYOUT PLAN FOR SYNTHETIC TURF LINES AND MARKINGS.
- RE-GRADE DISTURBED AGGREGATE BASE TO MEET PLANARITY AND INFILTRATION RATE REQUIREMENTS. THE CONTRACTOR SHALL HAVE PROJECT ENGINEER AND SYNTHETIC TURF INSTALLATION FOREMAN APPROVE THE BASE BEFORE BEGINNING THE SUPPLEMENTAL PAD AND SYNTHETIC TURF INSTALLATION.
- FURNISH AND INSTALL NEW BASES AND PLATES IN THE INFIELD AREA AS SHOWN. EXISTING BASE ANCHORS BE REPLACED.
- SYNTHETIC TURF INFILL TO MATCH FLUSH WITH EXISTING CONCRETE CURBS.
- PROTECT ALL EXISTING ELEMENTS TO REMAIN AROUND SITE INCLUDING FENCING, CURB, EDGE ANCHOR, PAVEMENT, ETC.
- PRESSURE WASH EXISTING SOCCER GOALS.
- FURNISH AND INSTALL SUPPLEMENTAL PAD SYSTEM. PROVIDE GRADE TRANSITION AT PERIMETER OF FIELD FOR INSTALLATION OF SUPPLEMENTAL PAD SYSTEM.
- PROTECT AND UTILIZE EXISTING EDGE ANCHOR TO SECURE NEW SYNTHETIC TURF SURFACING AROUND THE FIELD PERIMETER. MAKE REPAIRS AS NEEDED.
- PROTECT ALL EXISTING UTILITIES TO REMAIN THROUGHOUT CONSTRUCTION.
- FURNISH SOD AT 4.5' GRADE TRANSITION (3-18" PIECES OF SOD)

LAYOUT LEGEND

	SYNTHETIC TURF AND PERMEABLE AGGREGATE		EXISTING CHAINLINK FENCE
	CONCRETE PAVING		TRENCH DRAIN
	ASPHALT PAVING		EXISTING EDGE NCHOR/NAILER
	5' GRADE BREAK AT FIELD PERIMETER TO TAPER BASE FOR SUPPLEMENTAL PAD TO MEET FLUSH WITH MODIFIED EDGE ANCHOR		EXISTING CATCH BASIN INLET
	SOD GRADE TRANSITION		

REVISION DATE

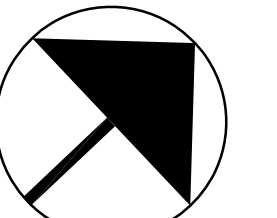
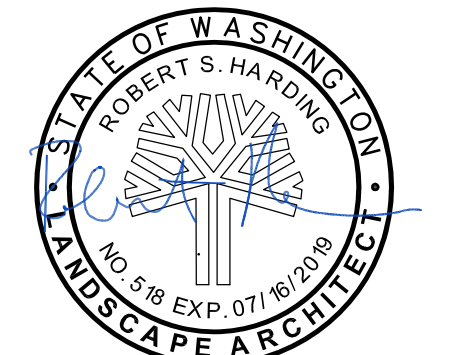


City of Redmond
WASHINGTON

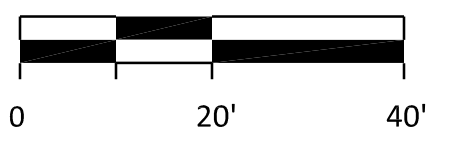
HARTMAN PARK FIELDS #5 AND #6 SYNTHETIC TURF REPLACEMENT



DA HOGAN
119 1st Avenue South, Suite 110
Seattle, Washington 98104
P. 206.285.0600
F. 206.285.0480



NORTH



SCALE: 1" = 20'

BID SET

DATE 06/14/19

SCALE 1"=20'

DRAWN REF

CHECKED RSH

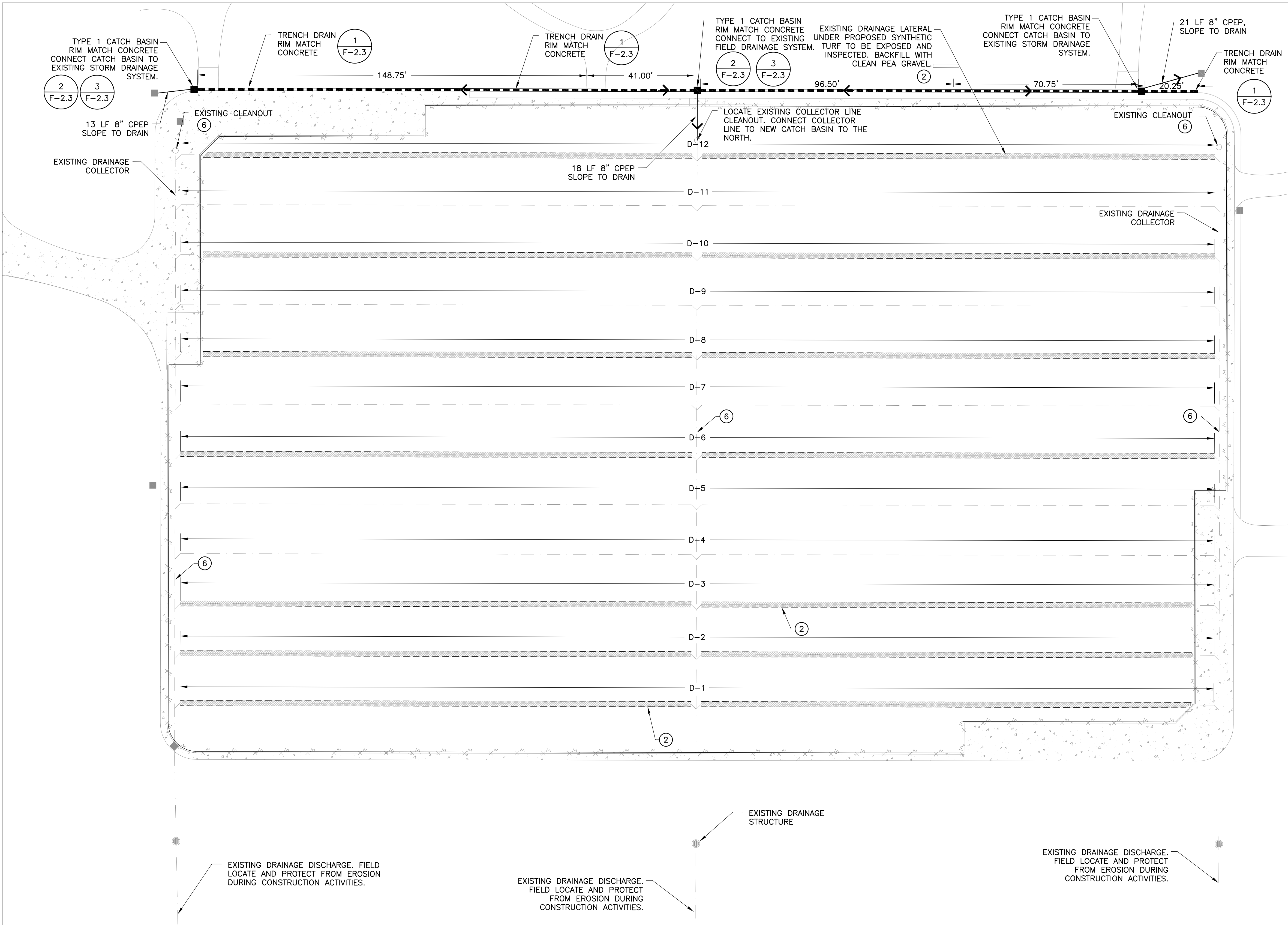
COPYRIGHT © 2019 D.A. HOGAN & ASSOCIATES

LAYOUT PLAN

SHEET

F-1.0

File: F-0.1 Hartman Park CURRENT 24x36.dwg Plotted by: DominiqueD Date: 13-Jun-19 12:35:05pm



DRAINAGE NOTES

1. FIELD LOCATE THE EXISTING SUBSURFACE DRAINAGE TRENCHES ACROSS THE ENTIRE FIELD AREA PRIOR TO FINISH FIELD GRADING ACTIVITIES. IF DAMAGED, FURNISH AND INSTALL NEW PIPING TO THE EXISTING SUBSURFACE DRAINAGE SYSTEMS.
2. EXISTING DRAINAGE LATERALS UNDER SYNTHETIC TURF INDICATED ON THE PLAN SHALL BE EXPOSED AND INSPECTED. REMOVE AND REPLACE EXISTING PEA GRAVEL WITH NEW CLEAN PEA GRAVEL FROM SUBGRADE ELEVATION TO TOP OF PIPE.
3. THE BACKFILL FOR ALL PERFORATED PIPE SHALL BE CLEAN WASHED PEA GRAVEL. REFER TO THE SPECIFICATIONS FOR THE GRADATION REQUIREMENTS.
4. DURING PLACEMENT OF SPECIFIED TRENCH BACKFILL, PIPE MUST BE HELD IN PLACE TO PREVENT DISPLACEMENT AND PROVIDE FOR ACHIEVING SPECIFIED INVERT ELEVATION. DO NOT DAMAGE PIPE OR ALLOW PIPE TO BE DISPLACED BY PLACEMENT OF BACKFILL MATERIAL.
5. NO TRUCKS OR EQUIPMENT WILL BE ALLOWED TO DRIVE OVER THE TOP OF THE TRENCHES EXCEPT TRACK-EQUIPPED MACHINERY UTILIZED IN SPREADING BASE AGGREGATE MATERIALS. BACKFILLED TRENCHES ARE TO BE STAKED AND FLAGGED 3' ABOVE GRADE AT MAXIMUM 30' SPACING FOR IDENTIFICATION.

- NOTE LEGEND**
- 1 (INDICATES GENERAL CONSTRUCTION NOTE)
 - 3 (INDICATES SPECIFIC CONSTRUCTION KEYNOTE)
 - 6. FIELD LOCATE EXISTING CLEAN OUTS AND END OF PIPE. FLUSH EXISTING COLLECTOR AND DOWNSTREAM PIPE TO POINT OF DISCHARGE. PROTECT DISCHARGE LOCATION FROM EROSION.

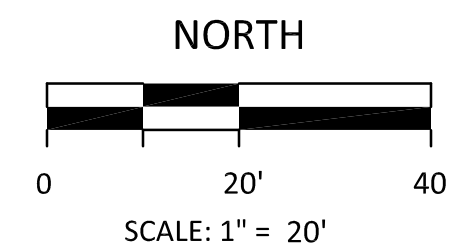
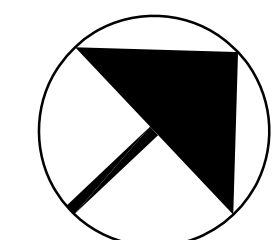
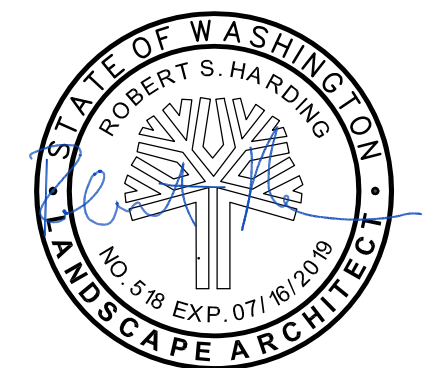
DRAINAGE LEGEND

- 4" PERF. CORR. POLY DRAIN TUBING
- 4" CORR. POLY DRAIN TUBING
- EXCAVATE DRAINAGE TRENCHES TO EXISTING DRAINAGE PIPE. INSPECT AND BACKFILL WITH PEA GRAVEL AS SHOWN IN DETAIL.
- TRENCH DRAIN
- NEW TYPE 1 CATCH BASIN INLET
- EXISTING CATCH BASIN INLET
- FLOW DIRECTION

REVISION	DATE



HARTMAN PARK FIELDS #5 AND #6 SYNTHETIC TURF REPLACEMENT



BID SET

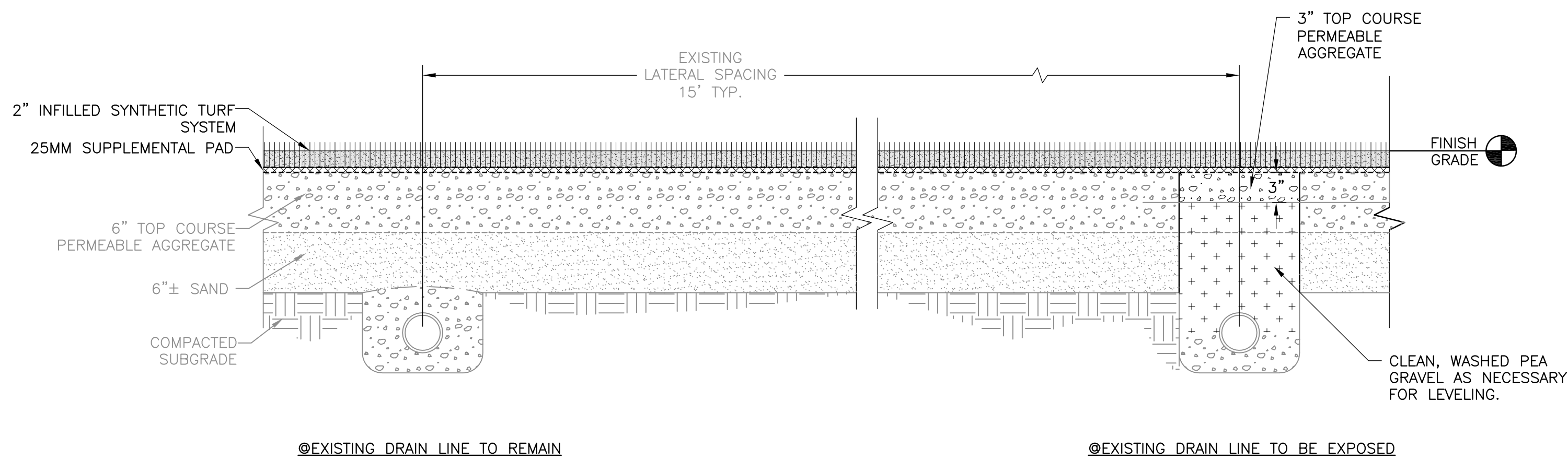
DATE	06/14/19
SCALE	1"=20'
DRAWN	REF
CHECKED	RSH
COPYRIGHT © 2019 D.A. HOGAN & ASSOCIATES	

DRAINAGE PLAN

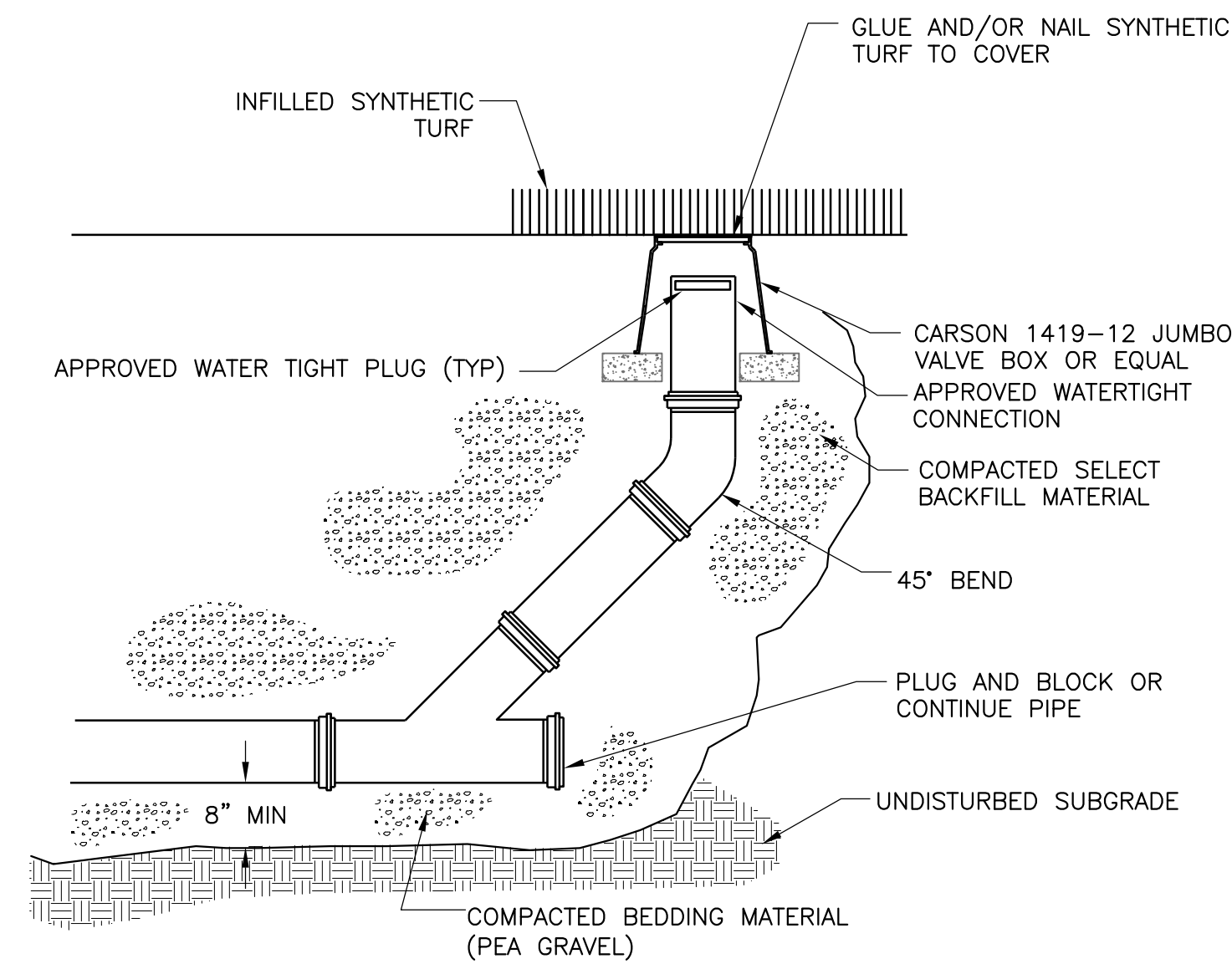
SHEET

F-1.1

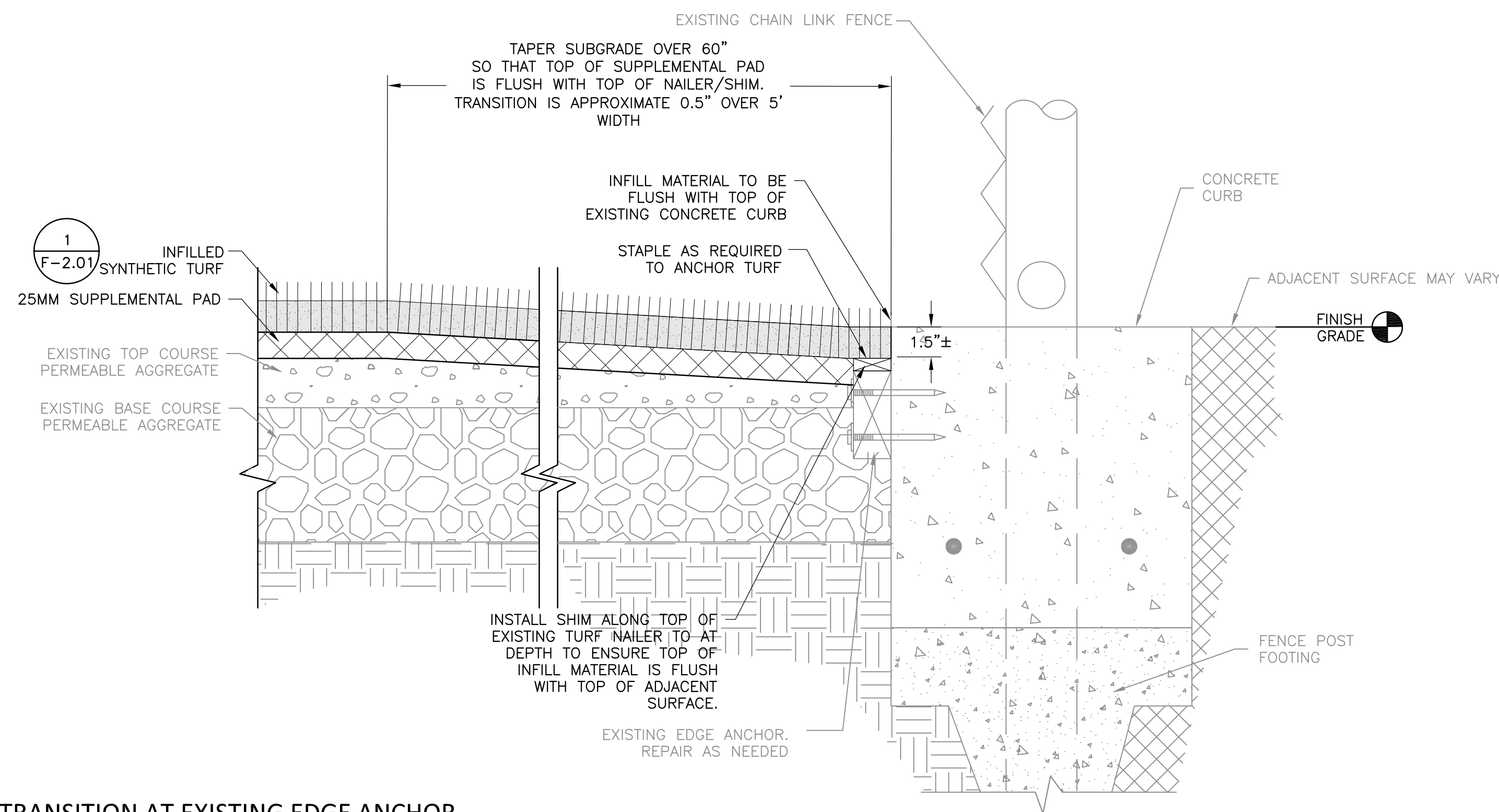
File: F-2.1 Typical Sections.dwg Plotted by: DominiqueD Date: 13-Jun-19 12:24:34pm



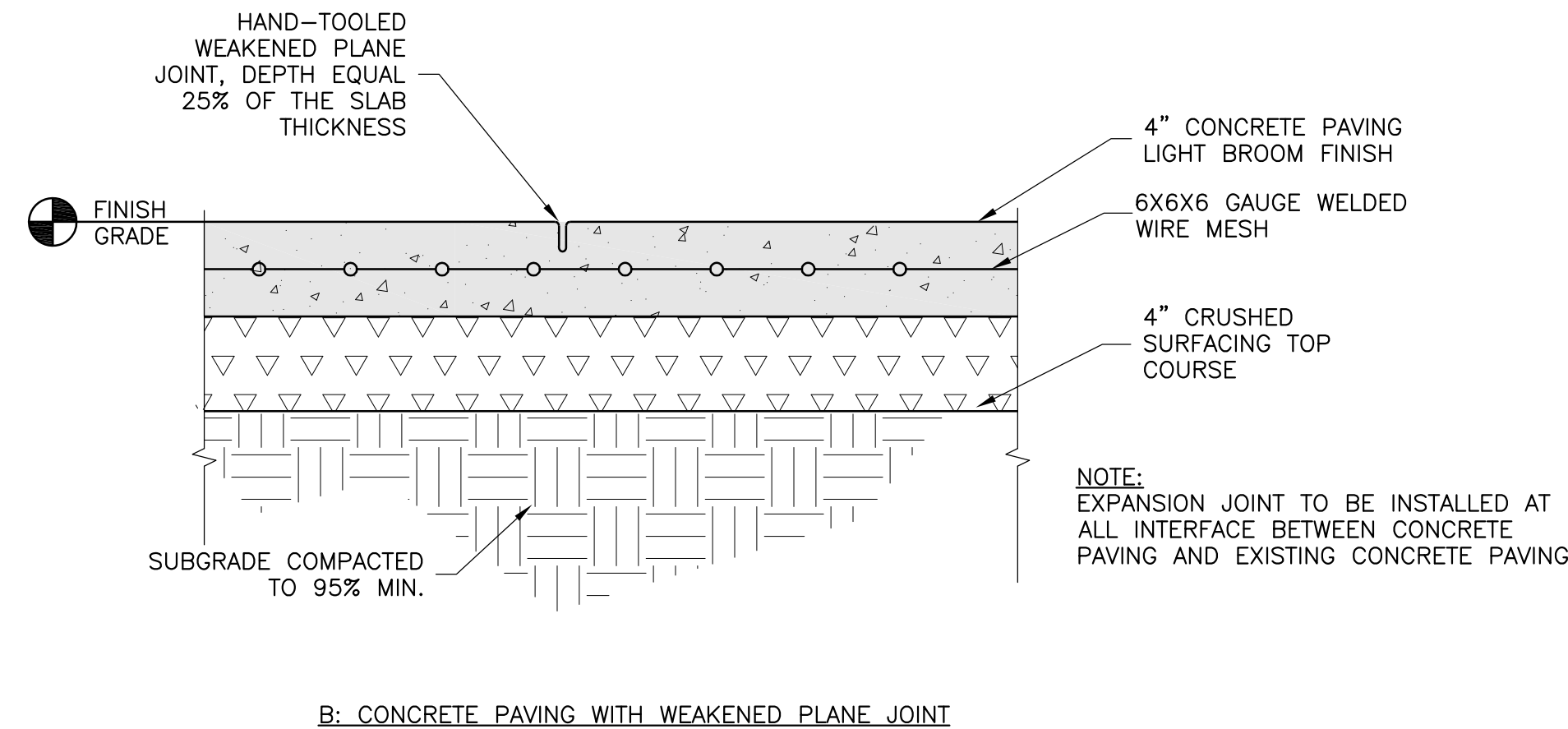
1
F-2.1 SYNTHETIC TURF FIELD SECTION
NOT TO SCALE



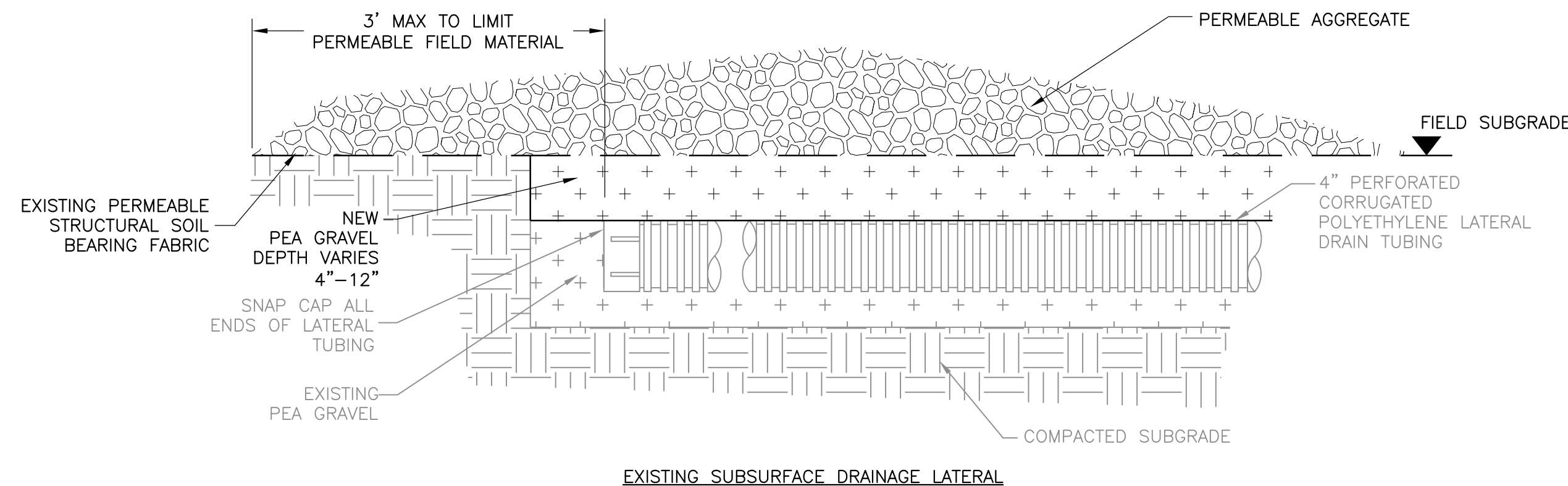
4
F-2.1 EXISTING CLEANOUT
NOT TO SCALE



2
F-2.1 TRANSITION AT EXISTING EDGE ANCHOR
NOT TO SCALE



5
F-2.1 CONCRETE PAVING
NOT TO SCALE

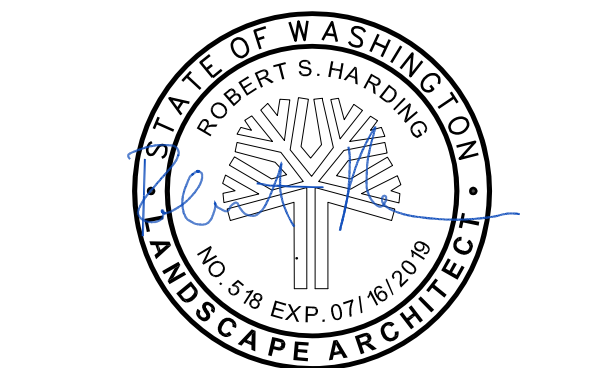


3
F-2.1 EXISTING SUBSURFACE DRAINAGE LATERAL
NOT TO SCALE

REVISION	DATE



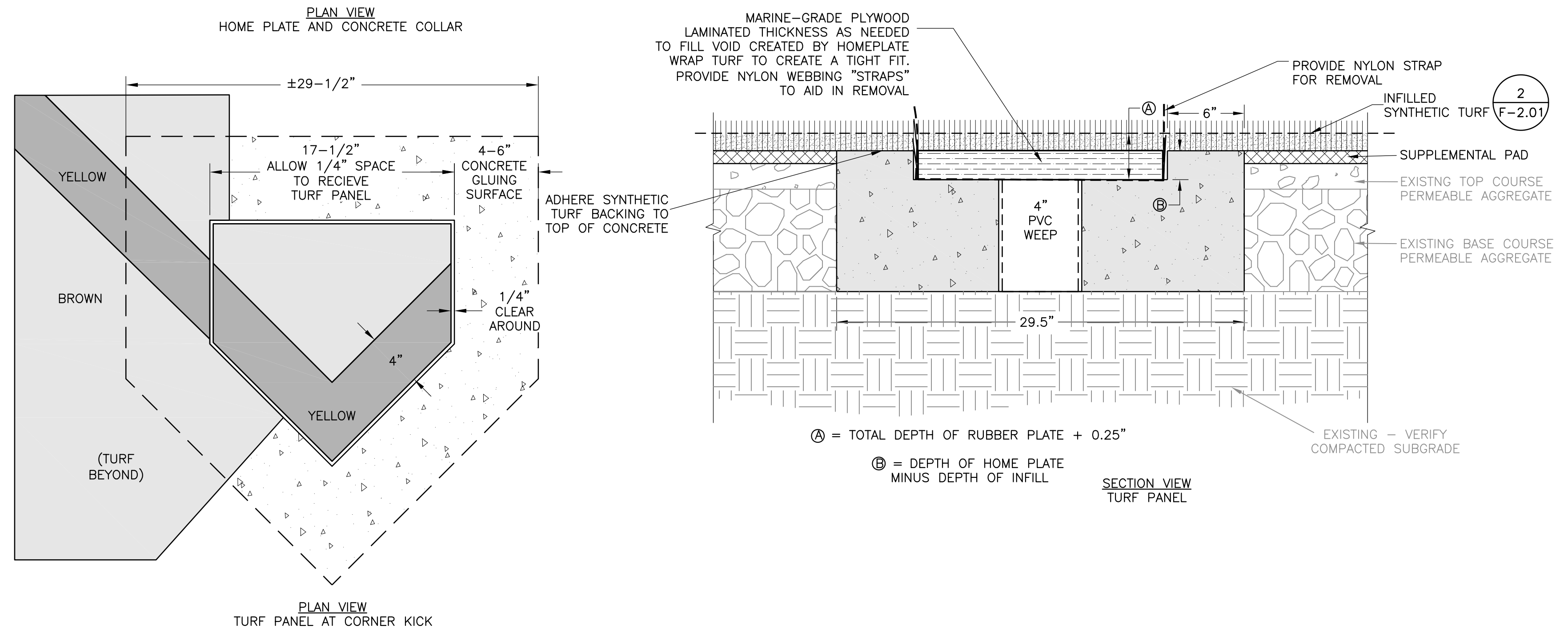
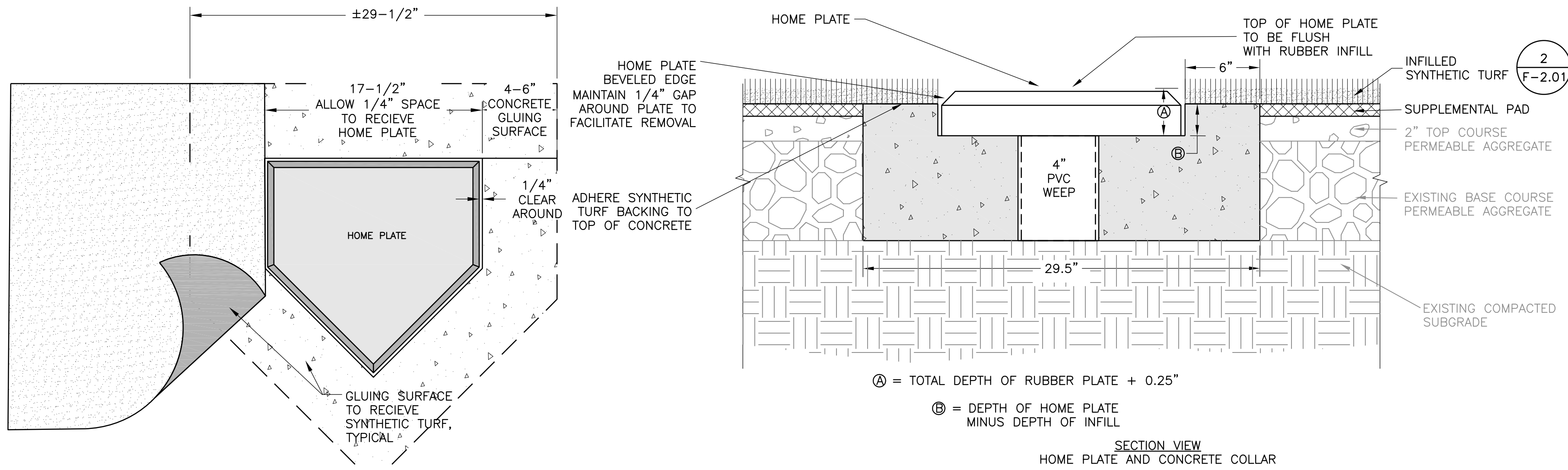
HARTMAN PARK FIELDS #5 AND #6 SYNTHETIC TURF REPLACEMENT



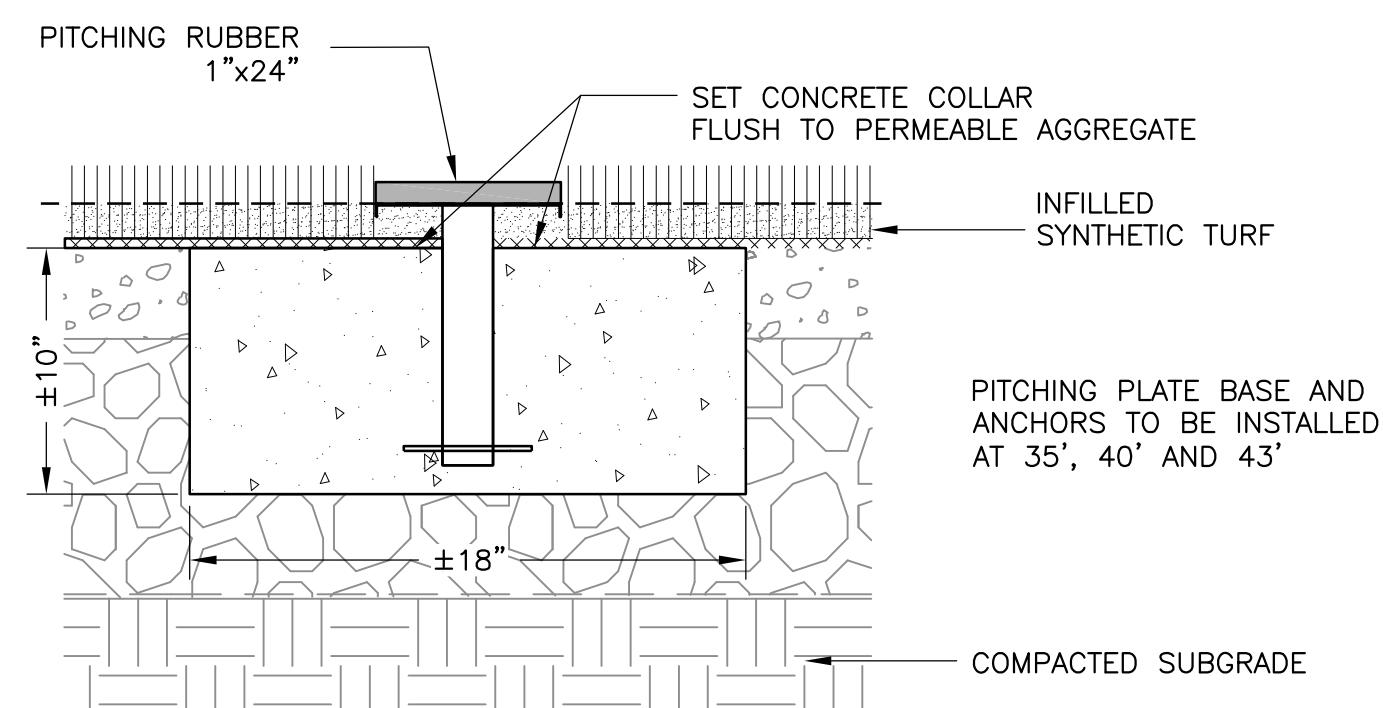
BID SET	
DATE	06/14/19
SCALE	NTS
DRAWN	REF
CHECKED	RSH
COPYRIGHT © 2019 D.A. HOGAN & ASSOCIATES	

TYPICAL SECTIONS AND DETAILS

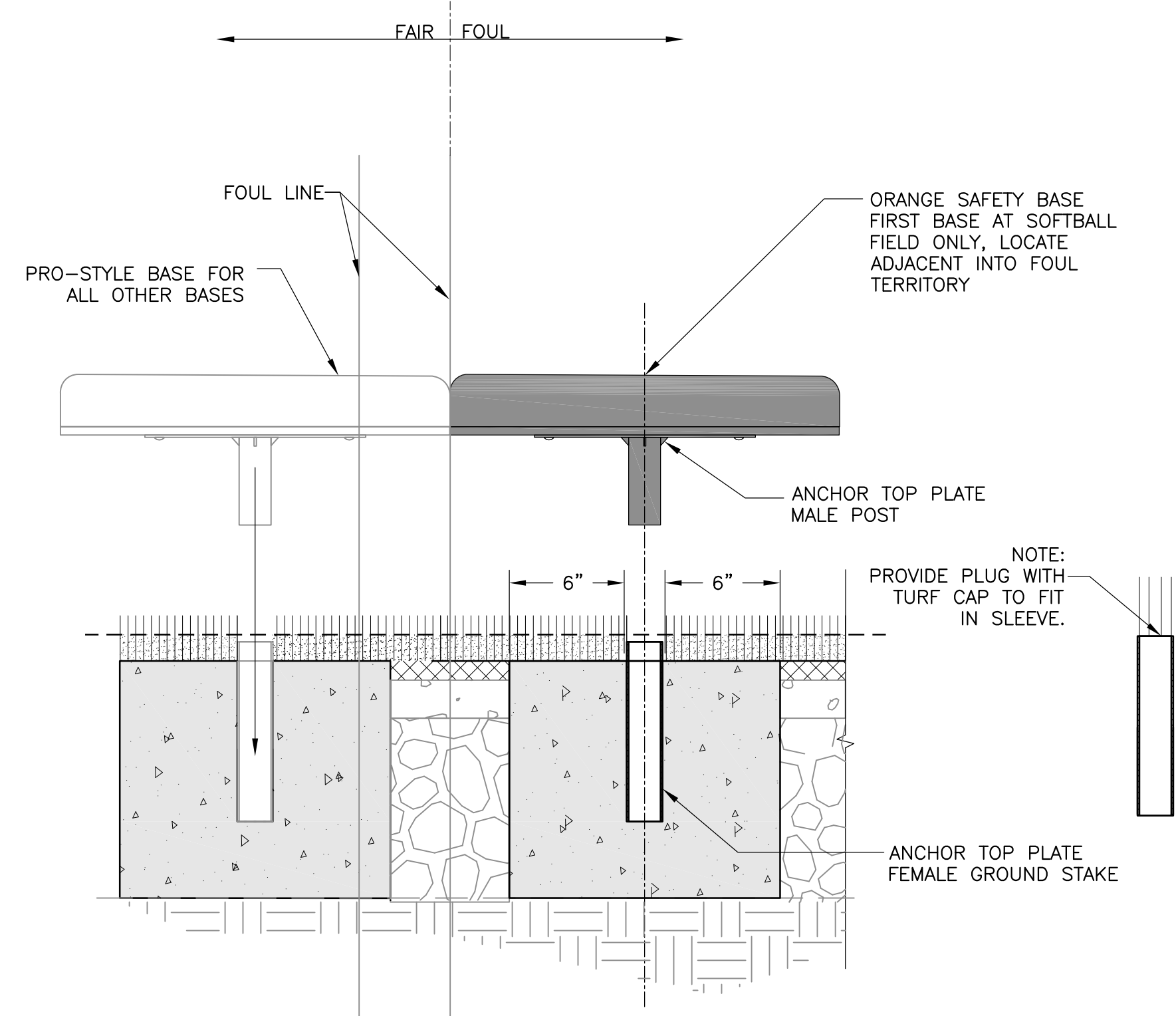
SHEET
F-2.1



1 HOME PLATE CONVERSION
F-2.2 NOT TO SCALE



2 PITCHING PLATE
F-2.2 NOT TO SCALE



3 SAFETY BASE WITH ANCHOR
F-2.2 NOT TO SCALE

File: F-2.2 Softball Field Details.dwg Plotted by: DominiqueD Date: 13-Jun-19 12:35:08pm

REVISION	DATE



HARTMAN PARK FIELDS #5 AND #6 SYNTHETIC TURF REPLACEMENT



119 1st Avenue South, Suite 110
Seattle, Washington 98104
P. 206.285.0400
F. 206.285.0480

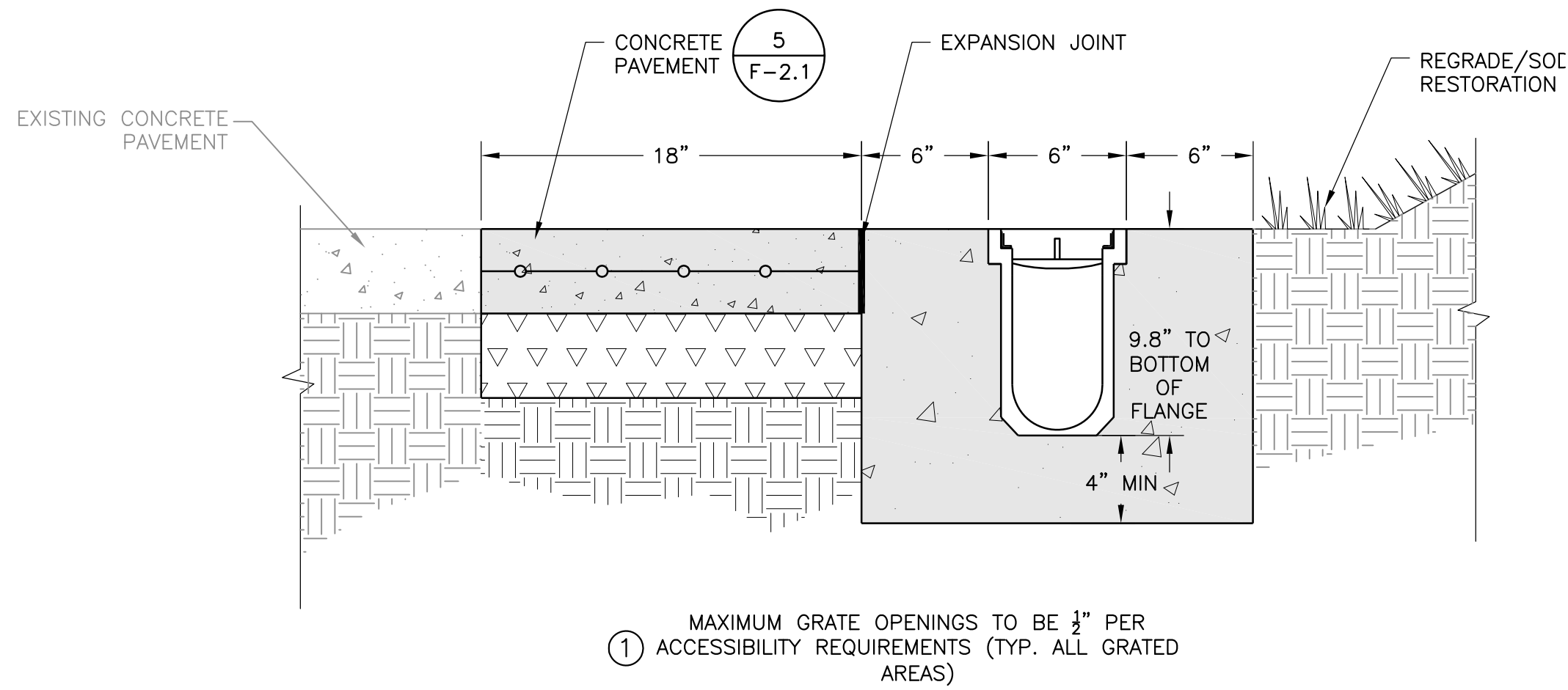


BID SET	
DATE	06/14/19
SCALE	NTS
DRAWN	REF
CHECKED	RSH
COPYRIGHT © 2019 D.A. HOGAN & ASSOCIATES	

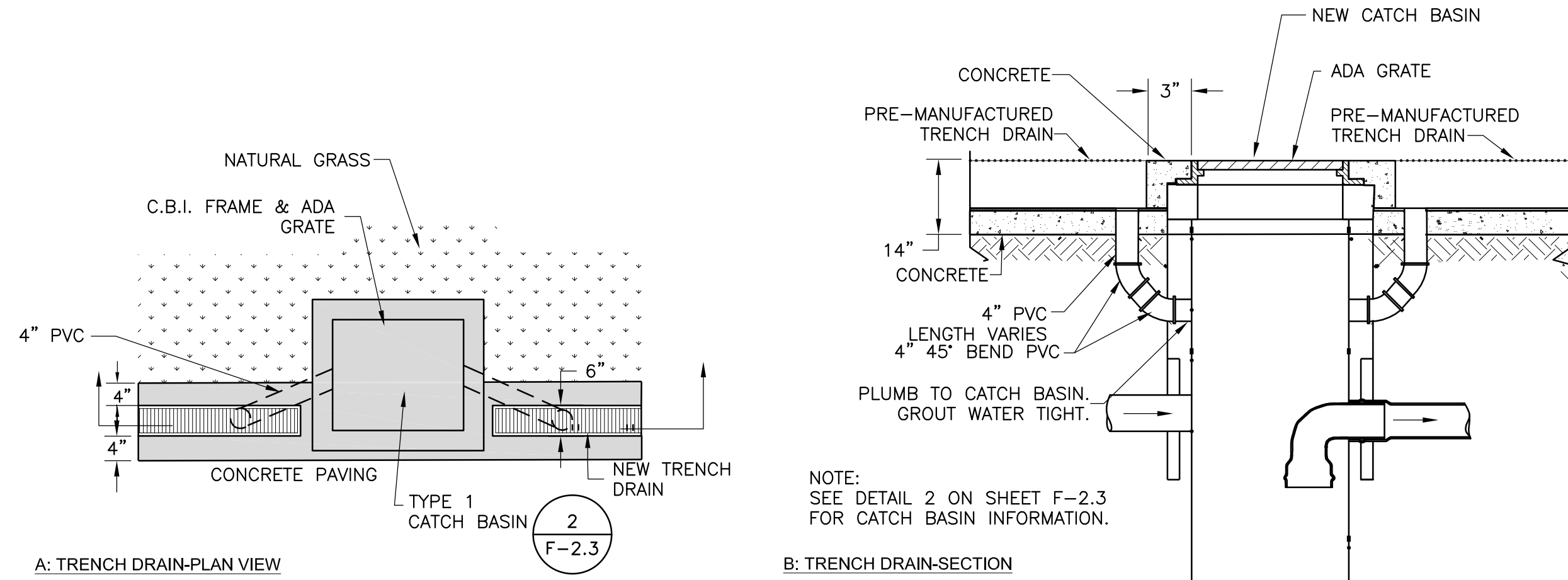
SOFTBALL FIELD DETAILS

SHEET

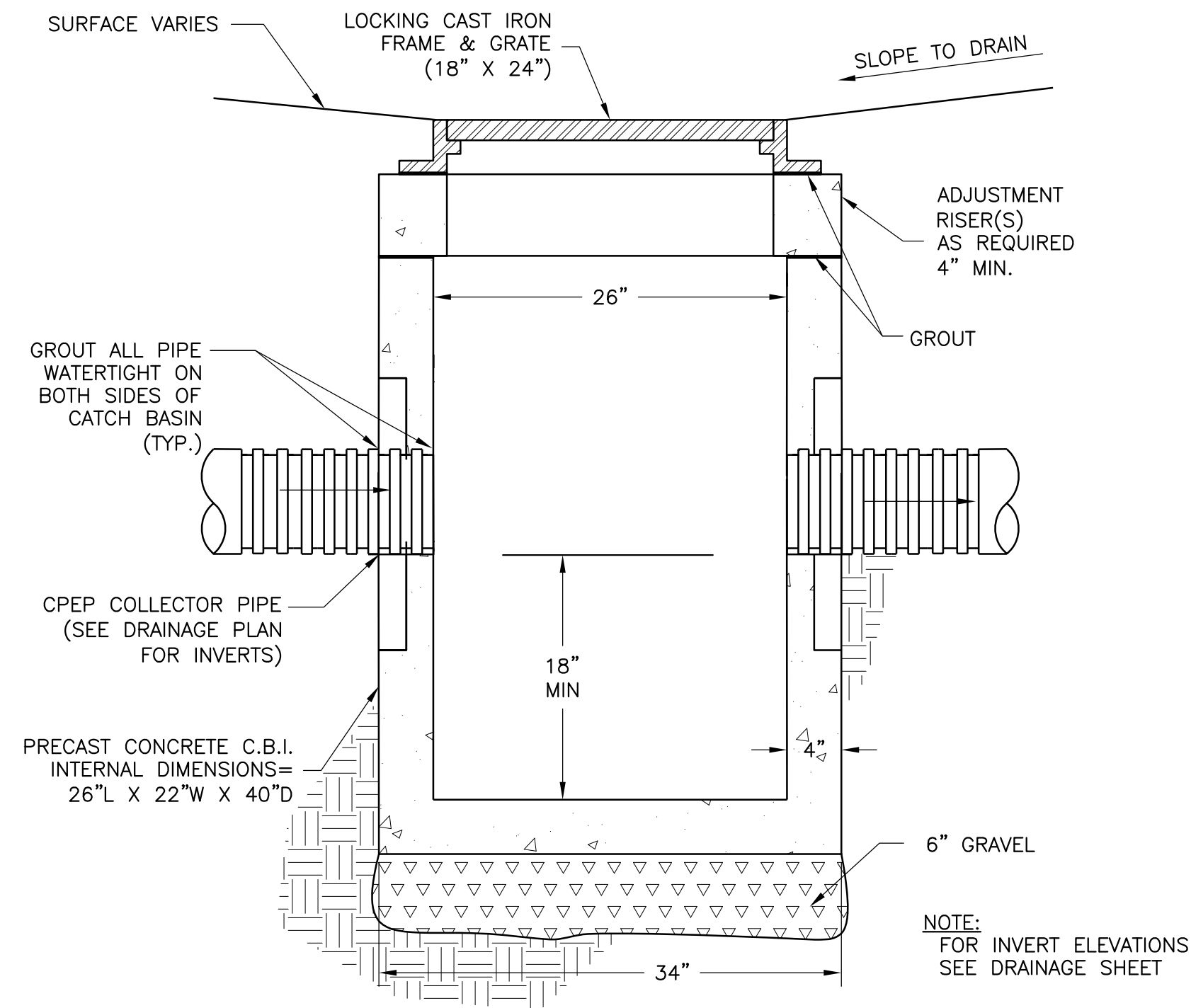
F-2.2



1
F-2.3 TRENCH DRAIN AT CONCRETE PAVEMENT
NOT TO SCALE



3
F-2.3 TRENCH DRAIN CATCH BASIN CONNECTION
NOT TO SCALE



2
F-2.3 TYPE 1 CATCH BASIN
NOT TO SCALE

File: F-2.3 Drainage Details.dwg Plotted by: DominiqueD Date: 13-Jun-19 12:32:48pm

REVISION	DATE



HARTMAN PARK FIELDS #5 AND #6 SYNTHETIC TURF REPLACEMENT



BID SET	
DATE	06/14/19
SCALE	NTS
DRAWN	REF
CHECKED	RSH
COPYRIGHT © 2019 D.A. HOGAN & ASSOCIATES	

DRAINAGE DETAILS

SHEET

F-2.3

File: F-3.2 Soccer Layout and Details.dwg Plotted by: DominiqueD Date: 13-Jun-19 12:49:02pm

REVISION	DATE



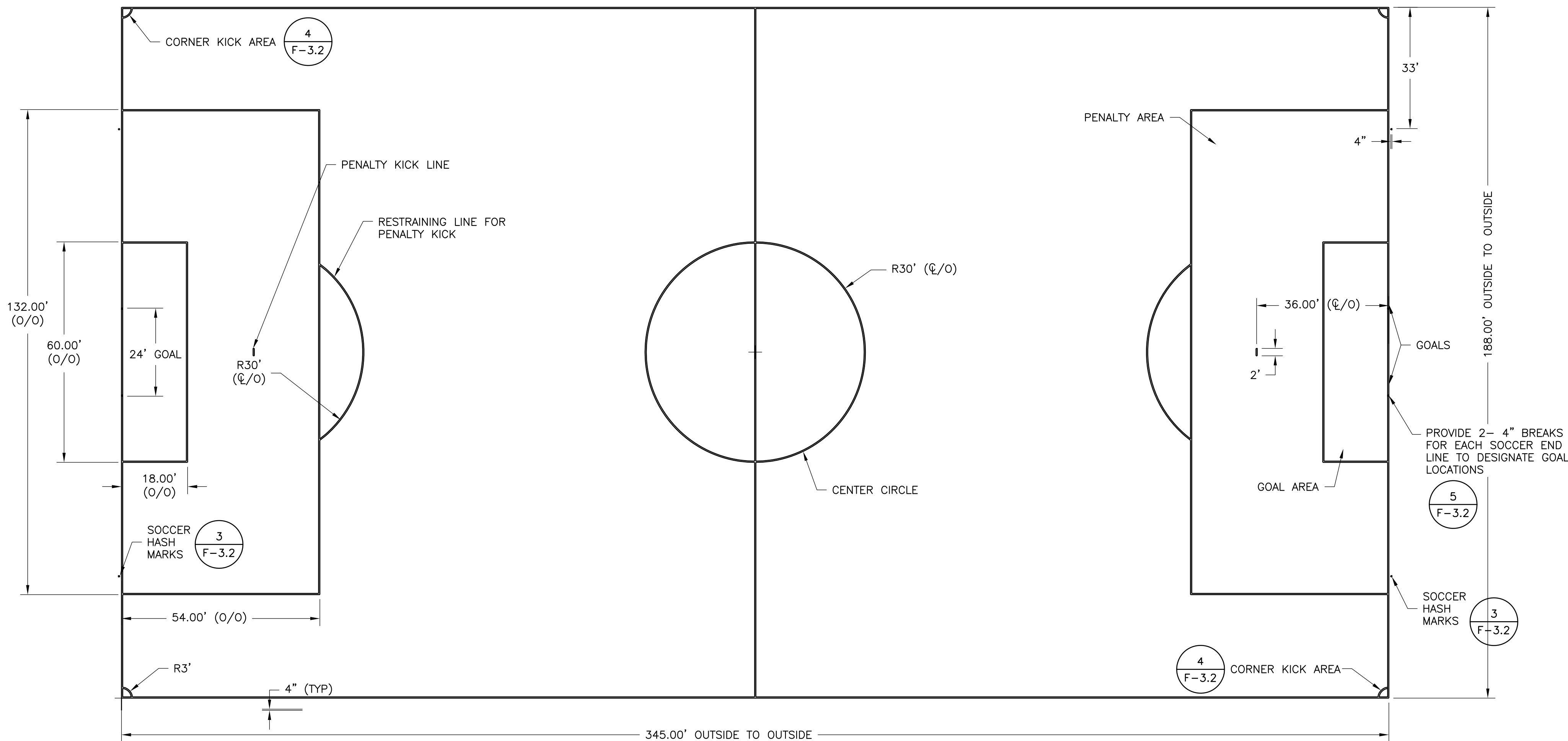
HARTMAN PARK
FIELDS #5 AND #6
SYNTHETIC TURF
REPLACEMENT



BID SET	
DATE	06/14/19
SCALE	NTS
DRAWN	REF
CHECKED	RSH
COPYRIGHT © 2019 D.A. HOGAN & ASSOCIATES	

SOCCER LAYOUT
AND DETAILS

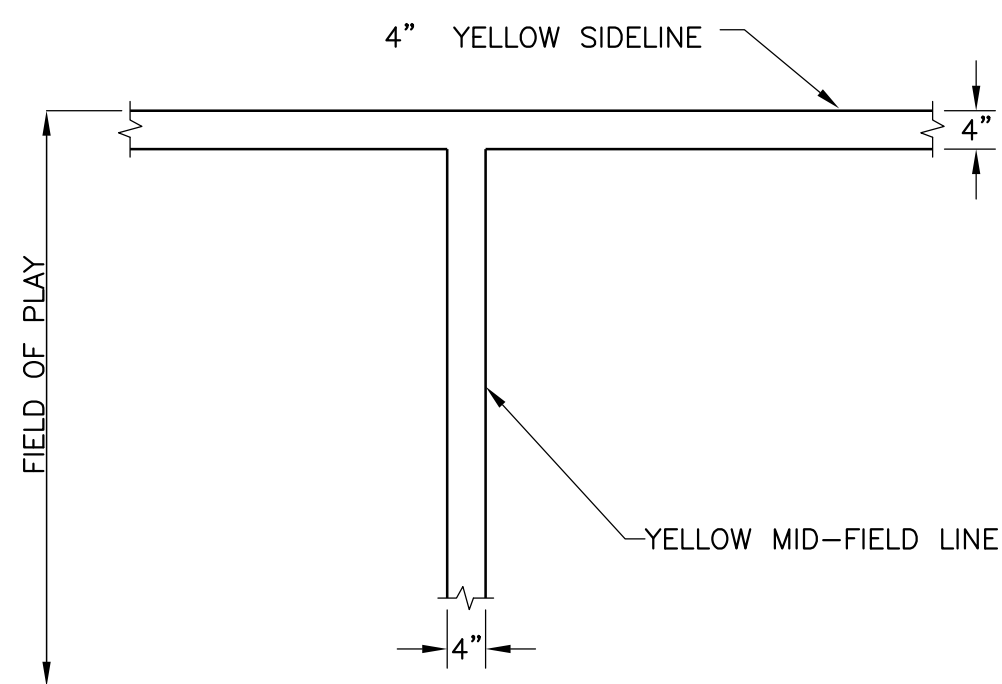
SHEET
F-3.2



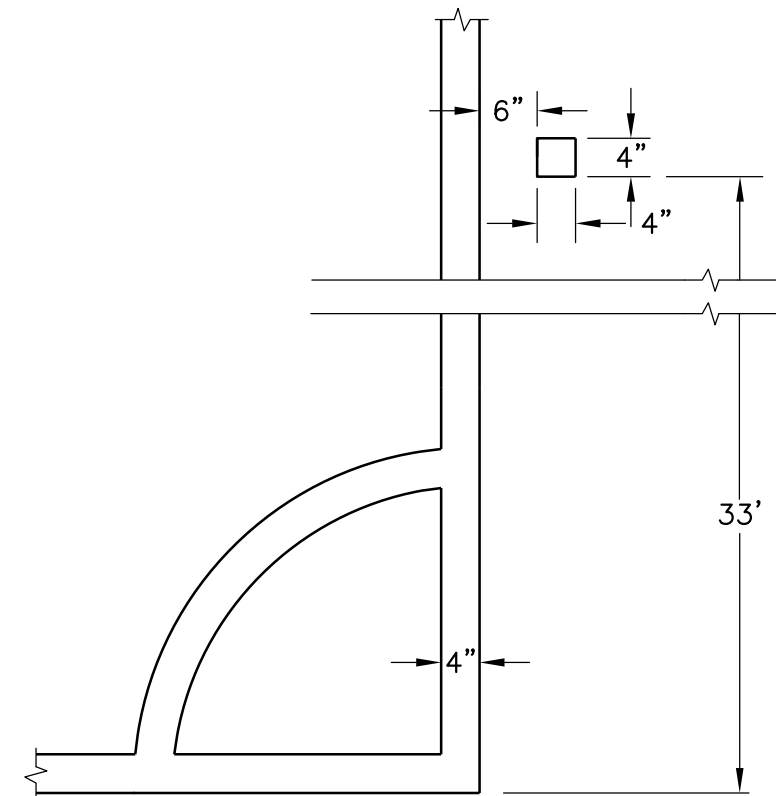
SOCCER LAYOUT NOTES

- CONTRACTOR SHALL VERIFY ALL DIMENSIONS. ALL LINE WORK IS TO BE LAID OUT WITH A TOLERANCE OF 1/4 INCH.
- ALL SOCCER LINES ARE 4 INCH YELLOW/GOLD INLAID TURF AS DIMENSIONED ON SOCCER LAYOUT PLAN.
- THE SOCCER GOAL AREA IS 18 FEET BY 60 FEET. REFER TO PLAN FOR LOCATION.
- THE SOCCER PENALTY AREA IS 54 FEET BY 132 FEET.
- THE PENALTY MARK IS A 2 FOOT LINE, 4 INCHES WIDE, 36 FEET FROM THE END LINE AND CENTERED ON THE GOAL. THE RESTRAINING LINE FOR PENALTY KICK AN ARC 30 FEET FROM THIS MARK OUTSIDE OF THE PENALTY AREA. REFER TO PLAN FOR LOCATION.
- THE HALFWAY LINE FOR THE SOCCER FIELD IS A 4 INCH YELLOW INLAID LINE WITH A CIRCLE, 30 FEET IN RADIUS IN THE CENTER OF THE FIELD. THE RADIUS POINT OF THE MIDFIELD CIRCLE WILL BE INLAID YELLOW DOT WITH A 9 INCH DIAMETER.
- THE CORNERS OF THE SOCCER FIELD SHALL HAVE A 3 FOOT RADIUS IN YELLOW TURF DESIGNATING THE CORNER KICK AREA. THE HASH MARK IS A 4"x4" MARKER THAT IS 6" FROM THE ENDLINE, 33 FEET FROM THE SIDE LINE.

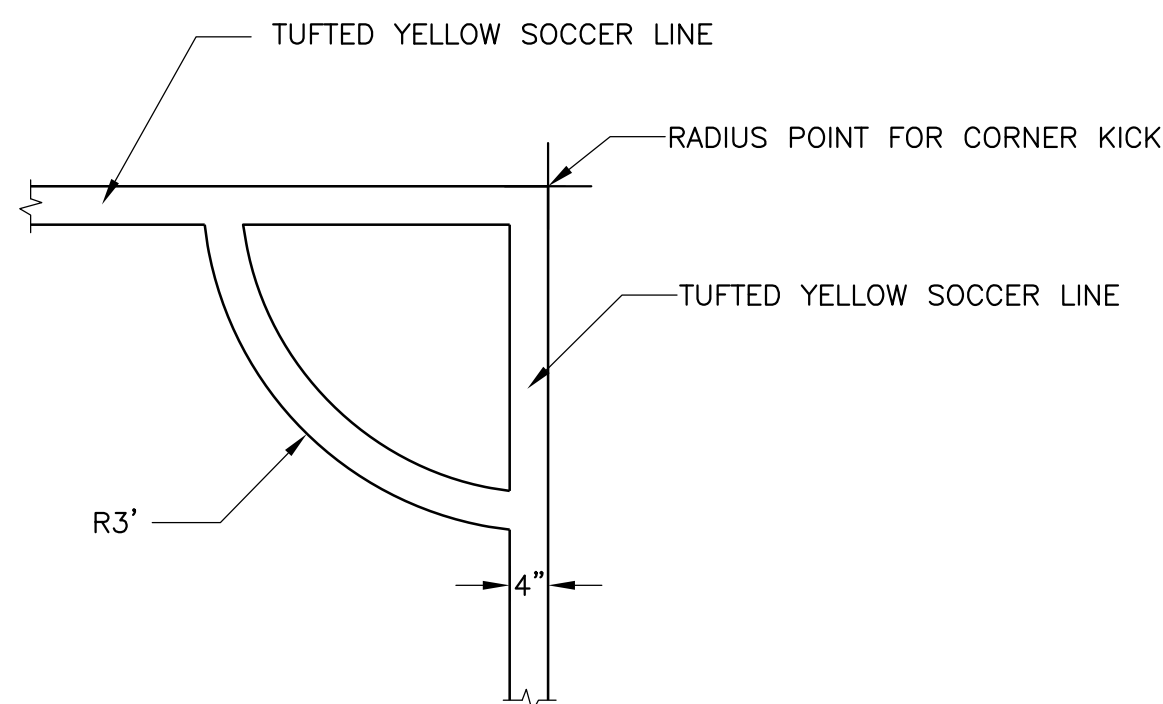
1 SOCCER LAYOUT PLAN
F-3.2 SCALE 1"=20'



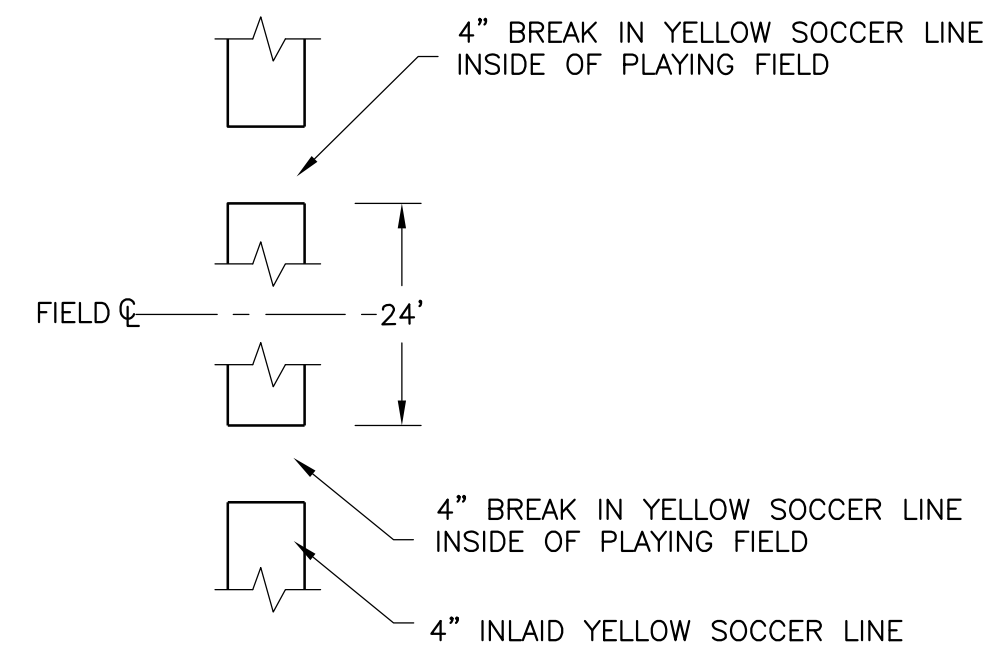
2 SOCCER SIDELINE
F-3.2 NOT TO SCALE



3 SOCCER HASH MARKS
F-3.2 NOT TO SCALE

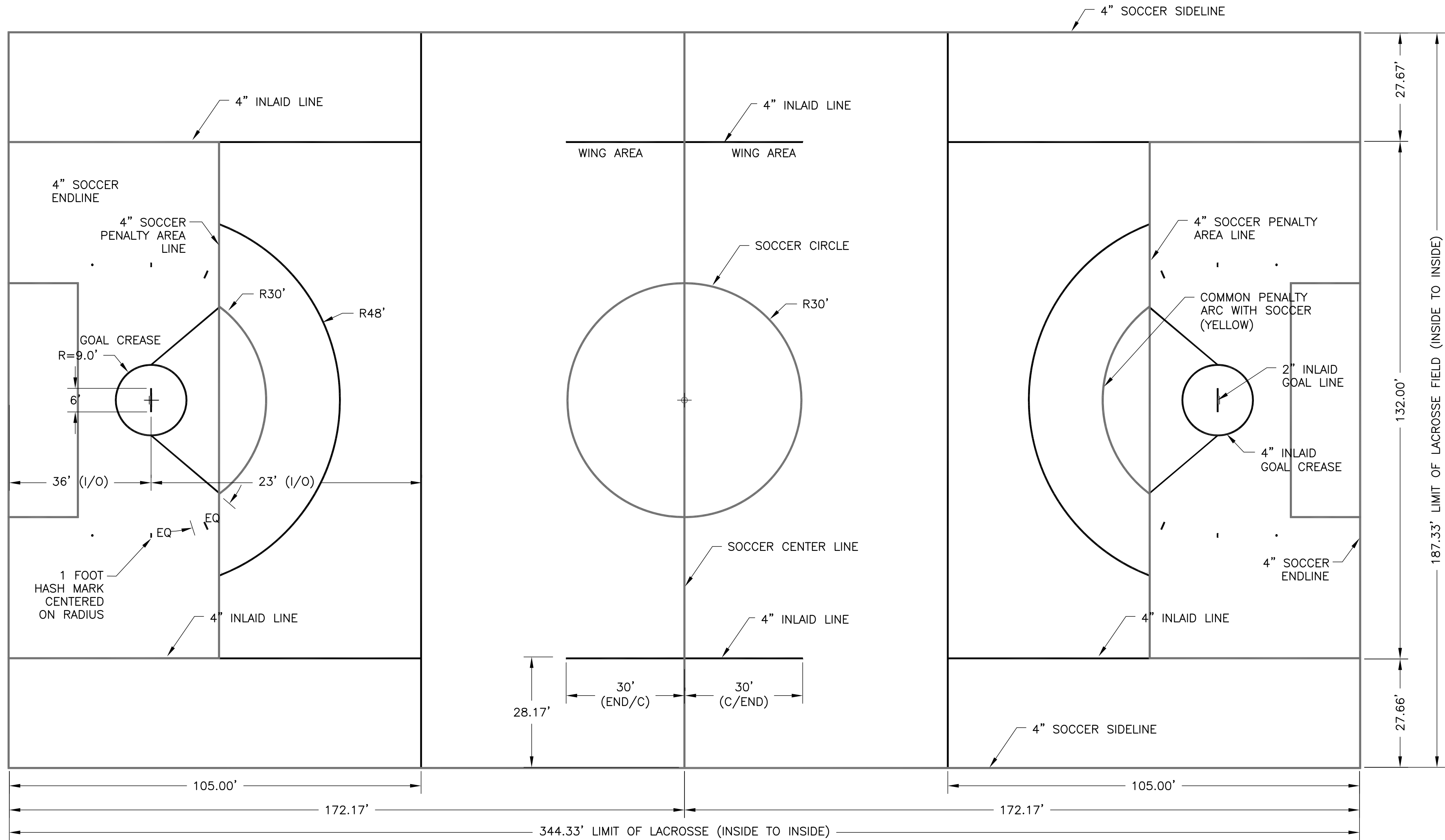


4 CORNER KICK DETAIL
F-3.2 NOT TO SCALE



5 SOCCER GOAL ALIGNMENT SQUARES
F-3.2 NOT TO SCALE

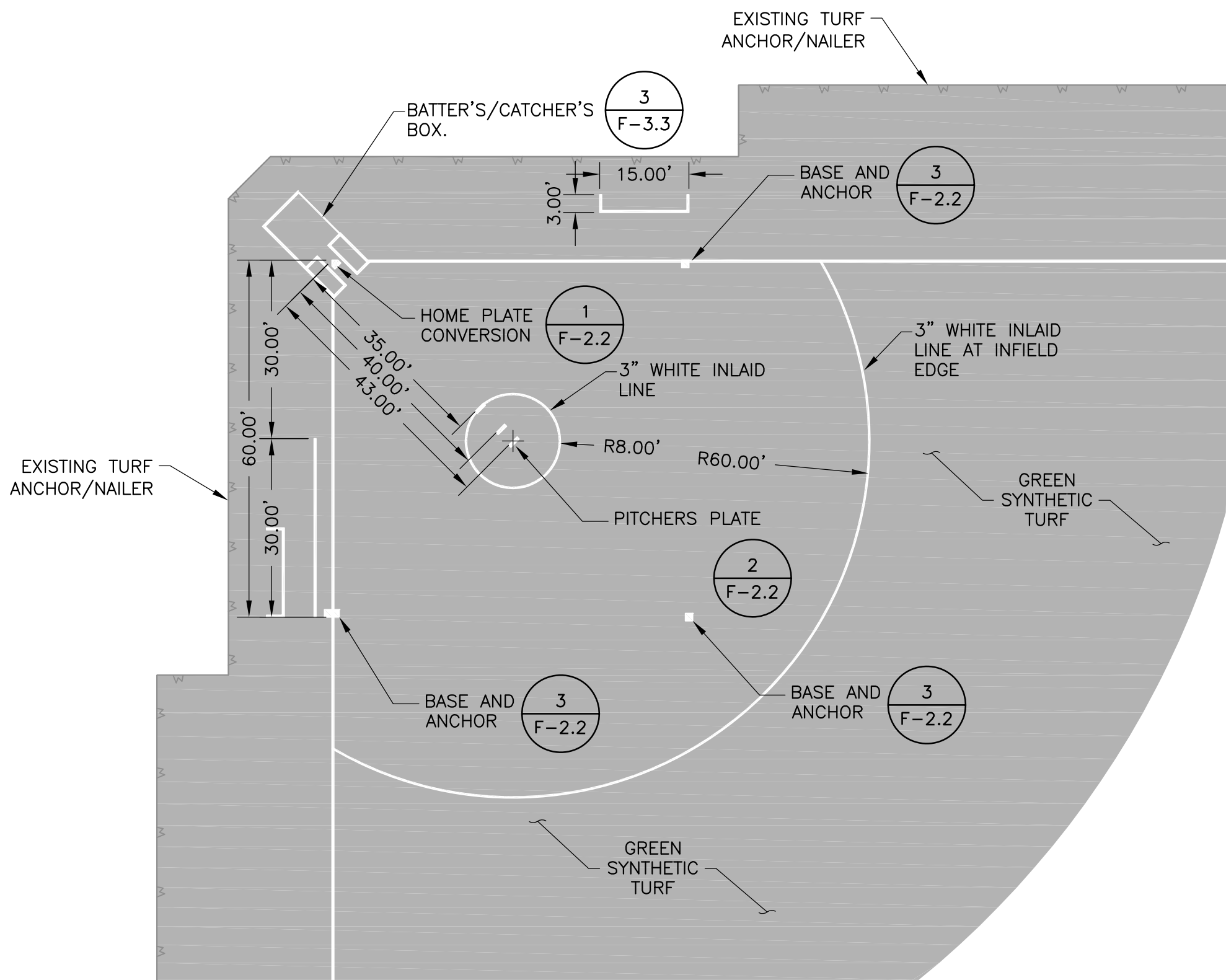
File: F-3.3 Softball Layout and Details.dwg Plotted by: DominiqueD Date: 14-Jun-19 9:43:16am



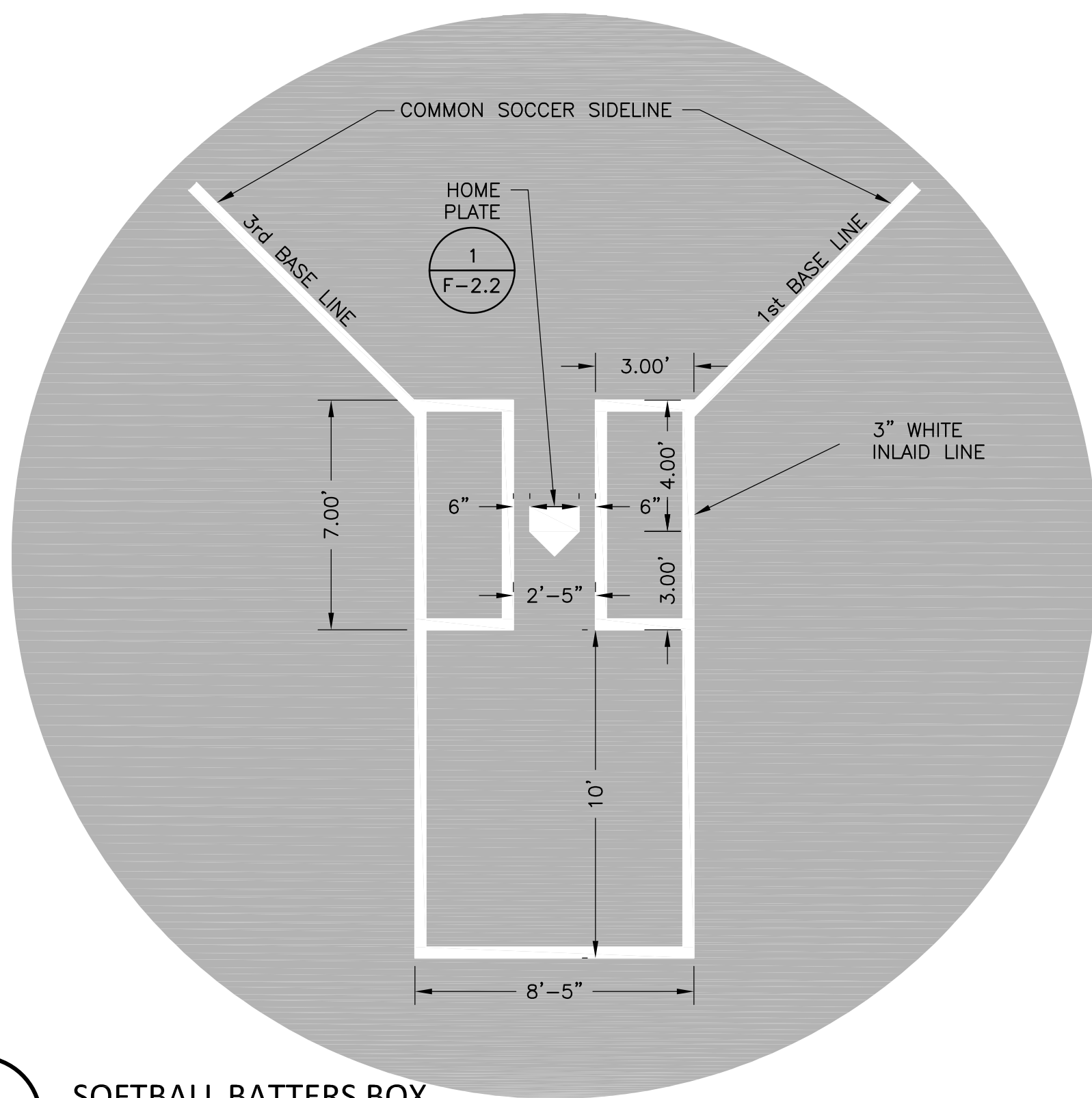
1
F-3.3 UNIFIED LACROSSE LAYOUT PLAN
SCALE 1"=20'

LACROSSE NOTES

1. PROVIDE LACROSSE LINES AND MARKINGS WITH 4" WIDE INLAID BLUE TURF UNLESS OTHERWISE NOTED.
2. CENTER LINE ON LACROSSE FIELD IS A YELLOW LINE.
3. THE GOAL LINE SHALL BE A 2" BLUE INLAID LINE.
4. THE SUBSTITUTION AREA AND COACHES AREA WILL BE DEFINED BY 4" BLUE INLAID LINES.
5. ALL COMMON LINES WITH SOCCER FIELD SHALL BE YELLOW. LACROSSE MARKINGS ARE SECONDARY TO SOCCER MARKINGS.



2
F-3.3 SOFTBALL LAYOUT PLAN
SCALE 1"=20'

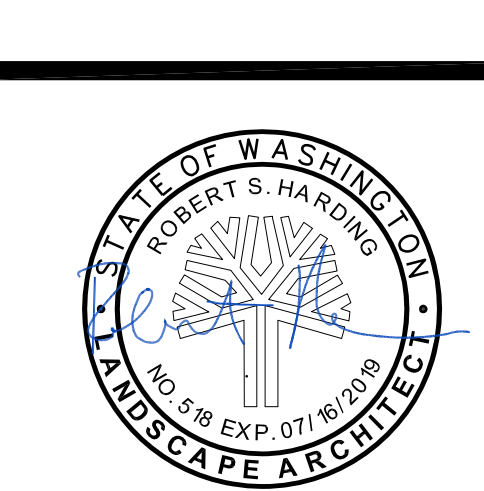


3
F-3.3 SOFTBALL BATTERS BOX
NOT TO SCALE

REVISION	DATE



HARTMAN PARK
FIELDS #5 AND #6
SYNTHETIC TURF
REPLACEMENT



BID SET	
DATE	06/14/19
SCALE	NTS
DRAWN	REF
CHECKED	RSH
COPYRIGHT © 2019 D.A. HOGAN & ASSOCIATES	

SOFTBALL AND
LACROSSE LAYOUT
AND DETAILS