

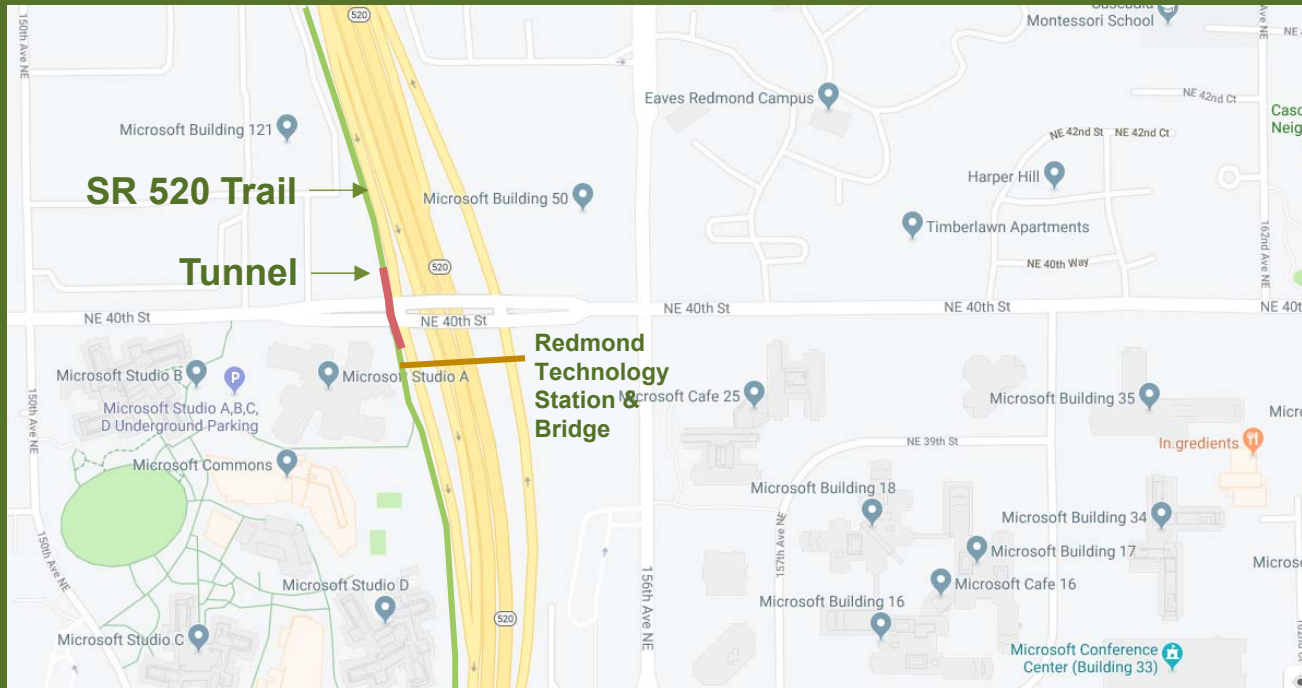
COMMITTEE OF THE WHOLE

SR 520 Tunnel Public Art

City Council
October 1, 2019



PURPOSE



Brief City Council on the final concept for the SR 520
Pedestrian/Bicycle Tunnel Public Art



PROJECT GOALS

- Incorporating Redmond's as a "forward-looking city shaping the world's future" through technology.
- Creating a safe and inviting pedestrian/bicycle facility
- Attracts people to come and experience Redmond



PROJECT INSPIRATION



Trompe-l'oeil



Superstudio



Portal



City of Redmond
WASHINGTON

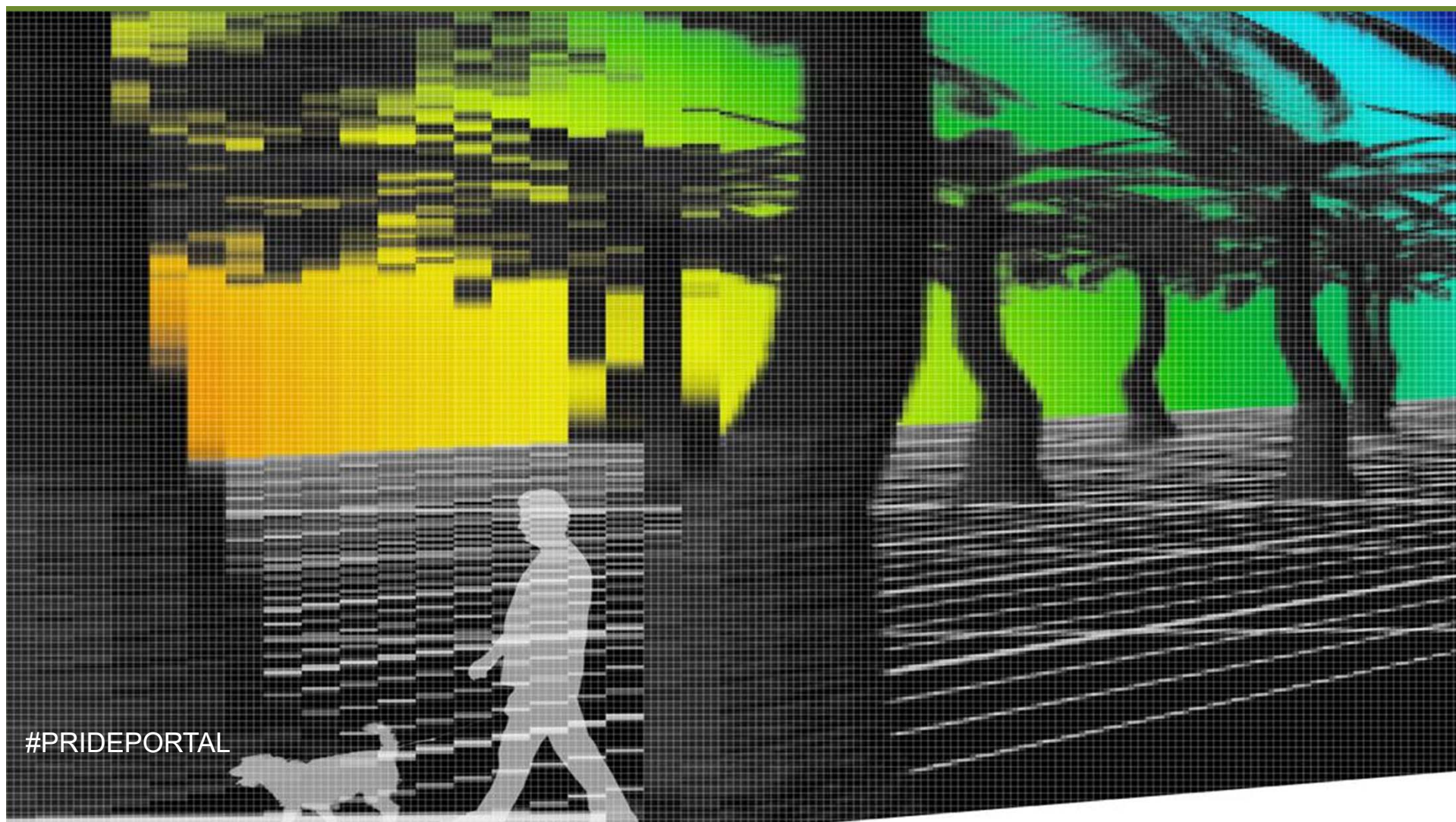
PROJECT INSPIRATION



Proud Together: Microsoft kicks off global Pride celebrations in Redmond

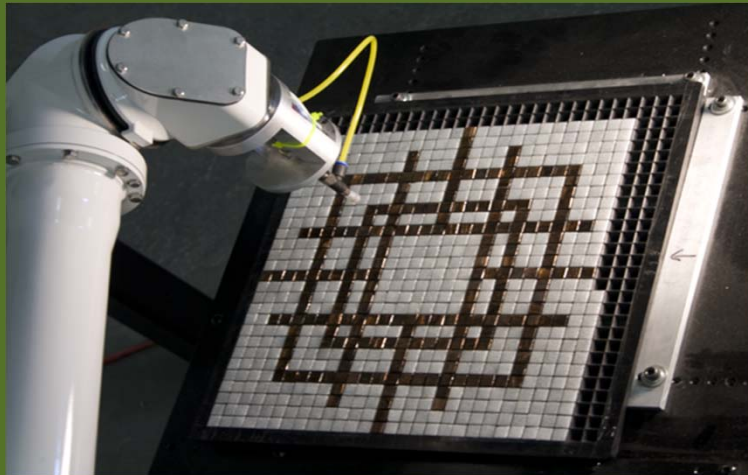






#PRIDEPORTAL

FABRICATION

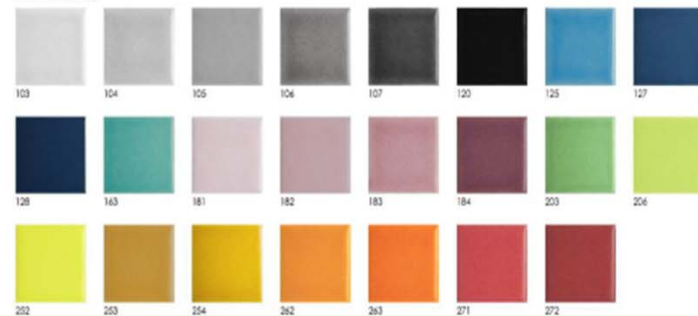


MATERIALS AND DURABILITY



West Wall

Glazed Porcelain



TECHNICAL CHARACTERISTICS & TEST DATA



**RESISTANT TO
CHEMICAL ATTACK**
ISO 10545/13



RESISTANT TO FROST
UNI EN 202 * ISO 10545/12



**<0.5% WATER
ABSORPTION**
ISO 10545/3



**RESISTANT TO
THERMAL SHOCK**
ISO 10545/9



LIGHT & COLOR FAST
ISO 10545-16



**RESISTANT TO
GLAZE ABRASION**
ISO 10545-7



**RESISTANT TO
STAIN**
ISO 10545-14



**RESISTANT TO
GLAZE CRACKING**
ISO 10545-11



**PASSES
BREAKING STRENGTH**
ISO 10545-4



**PASSES
MODULUS OF RUPTURE**
ISO 10545-4

BUDGET

- \$32,200 - WSDOT Grant Funded budget for tile acquisition and installation
- \$57,100 – City contribution for additional costs for tile fabrication (art)
- \$90,300 – Cost estimate of Artwork

Source of City funding: Public Art Fund



NEXT STEP

Finalize artwork design to incorporate into project bid package



THANK YOU

Questions?

Chris Weber
Cultural Arts Administrator
cweber@Redmond.gov
425-556-2316

