

# Redmond **WESTSIDE PARK** Renovation

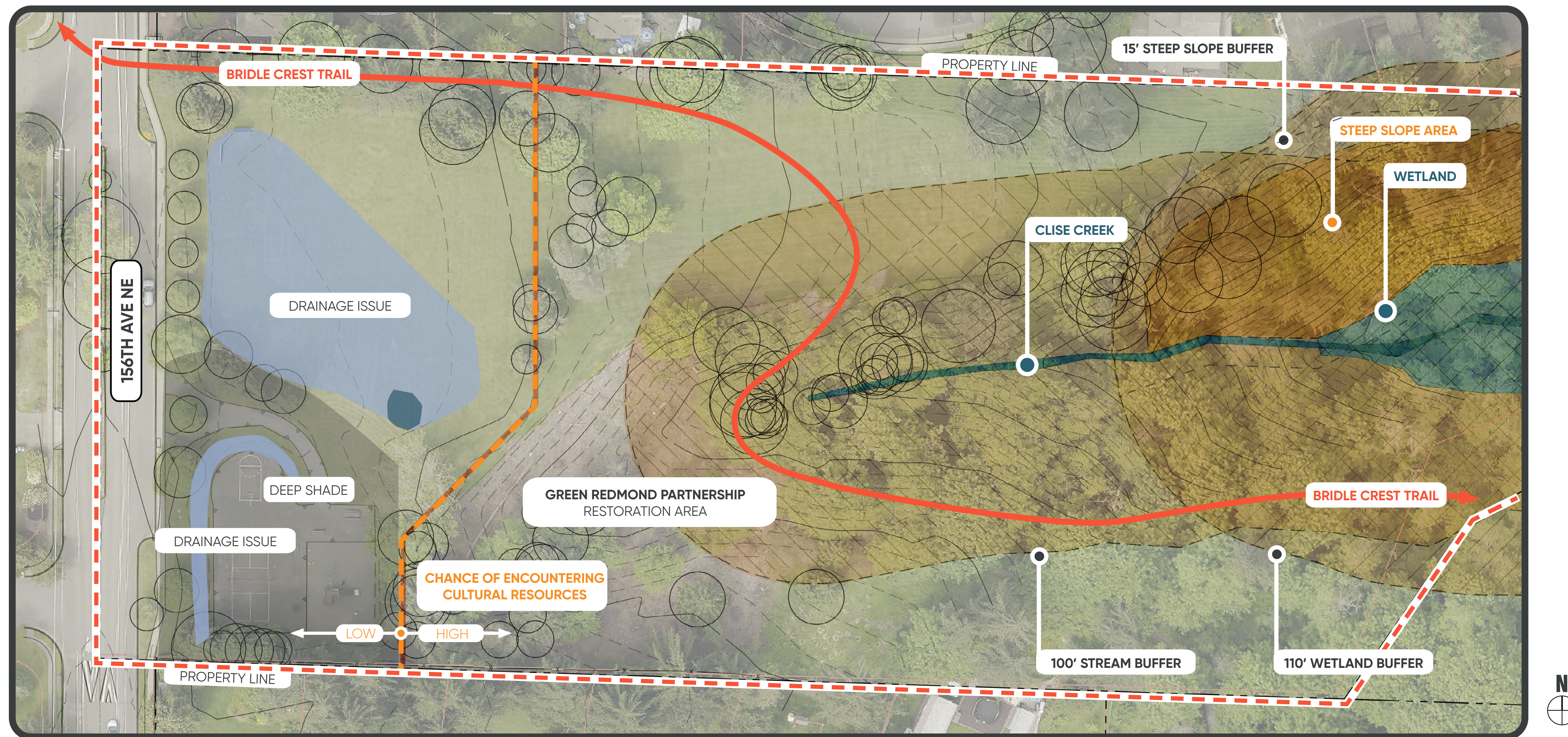
# Project Overview

Westside Park is a **47-year-old neighborhood park** in the Overlake Neighborhood. Existing recreation features include a small playground, open ball field, half basketball court, and open space. Recreation is currently limited in the 6.4 acre park due to poor drainage and outdated play equipment. **The Bridle Crest Trail** traverses through Westside park and through a forested ravine leading towards Marymoor Park.

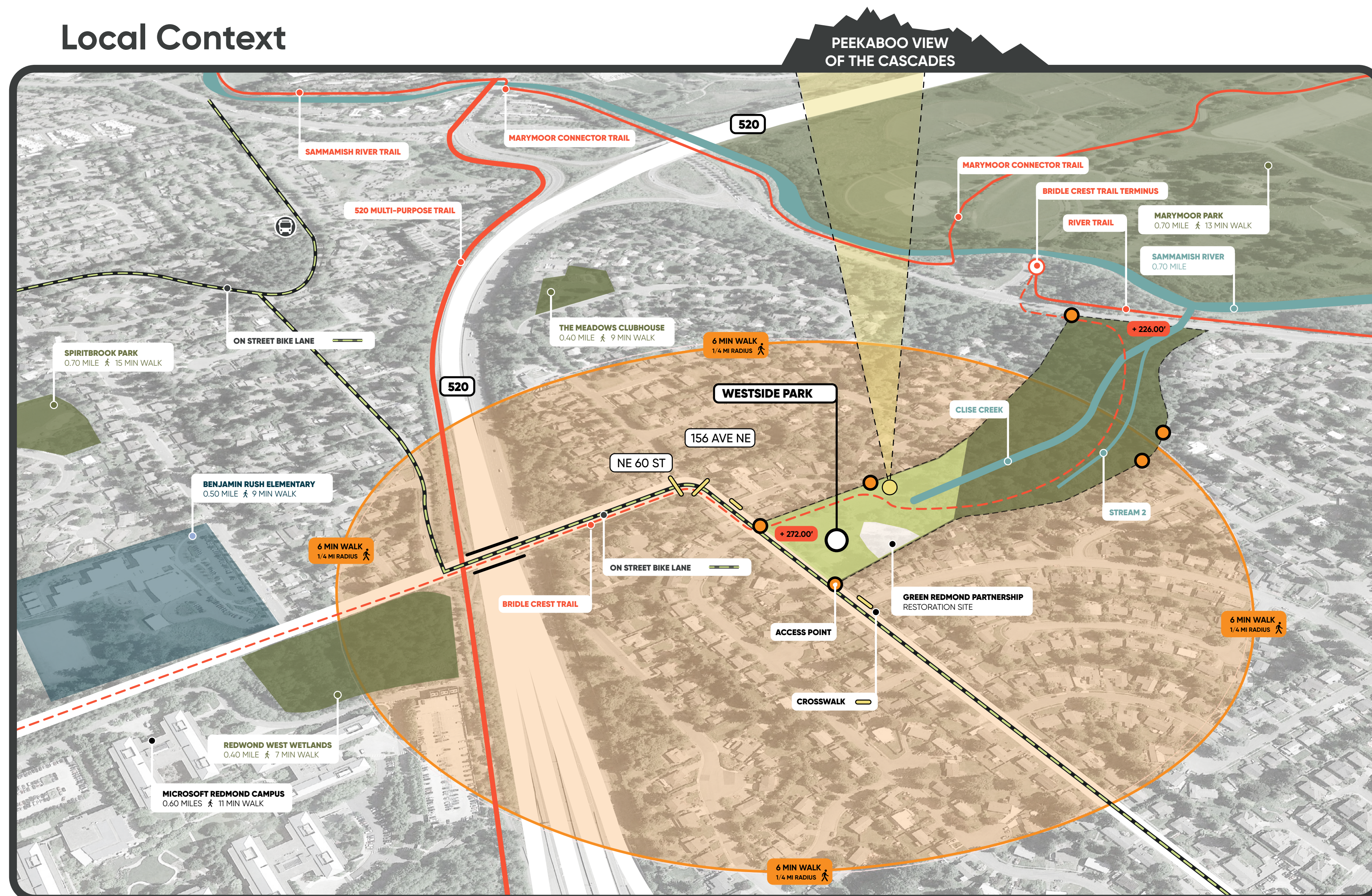
The park was acquired by the City in 1968, developed in the 1970s and extensively renovated in 1991. **A master planning process was undertaken in 2009 to update the park** and included extensive input from residents in the neighborhood. The master plan included some improvements to the Bridle Crest Trail, including a more defined trail through the active portion of the park and signage. The park is both a **neighborhood destination** for activities and an **important connection in Redmond for pedestrians, cyclists and equestrians**.

**The overall project budget is \$2.6 million.**

## Current Conditions Map



## Local Context



## Project Goals

The City of Redmond seeks to refine and update the Westside Park master plan with the community and finalize the park design. Proposed park elements include:

- Construct playground in new location
- Install drainage for open lawn space
- Construct an enhanced or expanded sport court
- Construct an open picnic shelter
- Install a drinking fountain
- Expand irrigation system
- Construct new pathways and trails to connect park elements

## Upcoming Schedule

## November 18, 2019 - Community Check-in

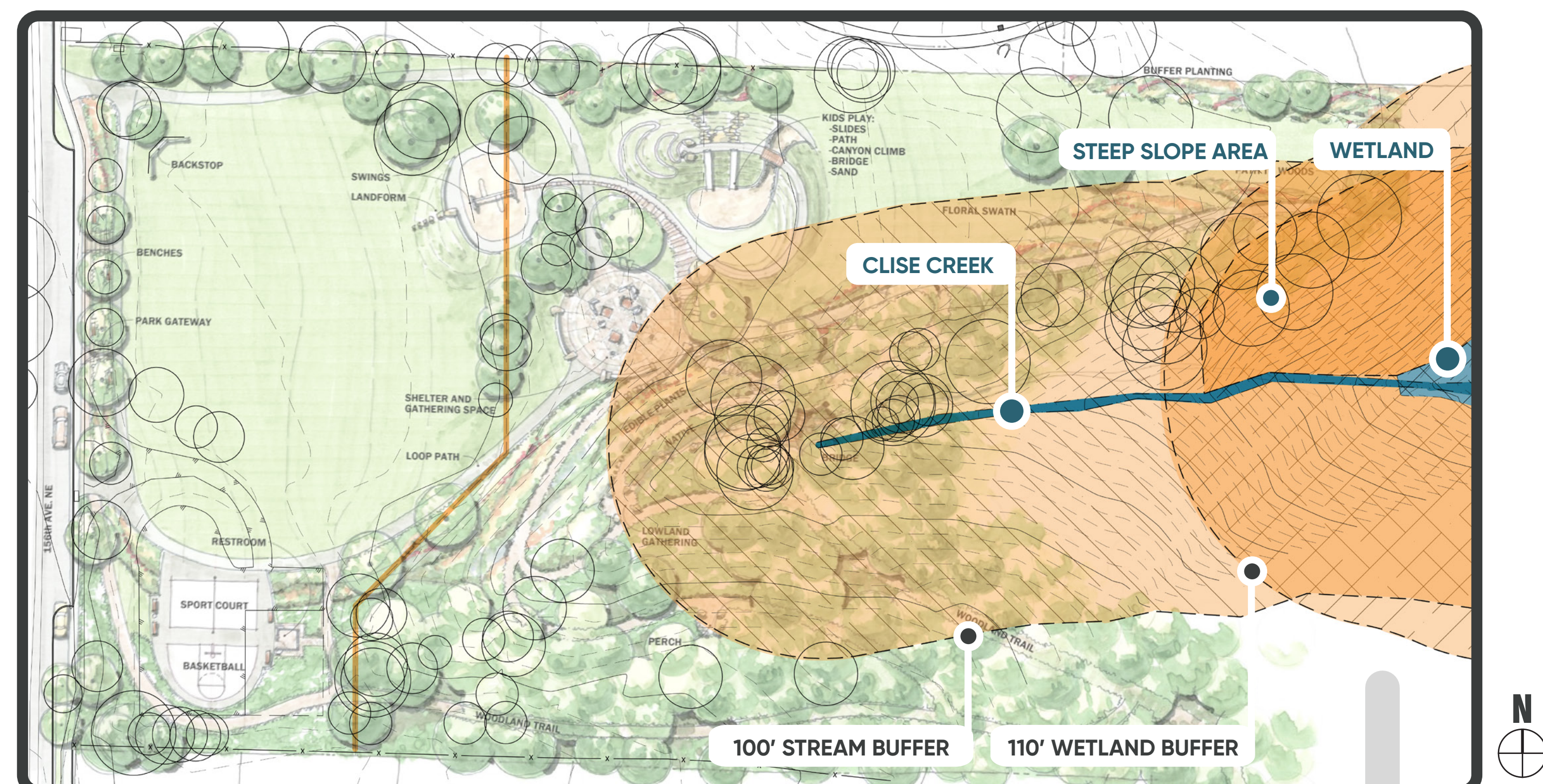
## January 13, 2020 - Two Concepts Public Meeting

## February 11, 2020 - Preferred Option Presentation

## 2020 - 2021 Construction



## 2009 Master Plan with Critical Area Overlays



## Recap of Community Preferences

### Community Preferences from Public Input + Survey:

These elements will be present in both design Options.

- ✓ Horse Trail
- ✓ Winding Paths
- ✓ Picnic Shelter
- ✓ Flexible, Open Lawns
- ✓ Active Play / Sport Court
- ✓ Native Plants & Fall Color

### More Input Needed Here:

Vote for these distinguishing elements on the Option Boards!

- ? Contemporary or Naturalistic
- ? Size of Loop Path
- ? Shelter Character
- ? Size of Sport Court
- ? Types of Play
- ? Location of Gathering Space

Now it's Time to Vote! →

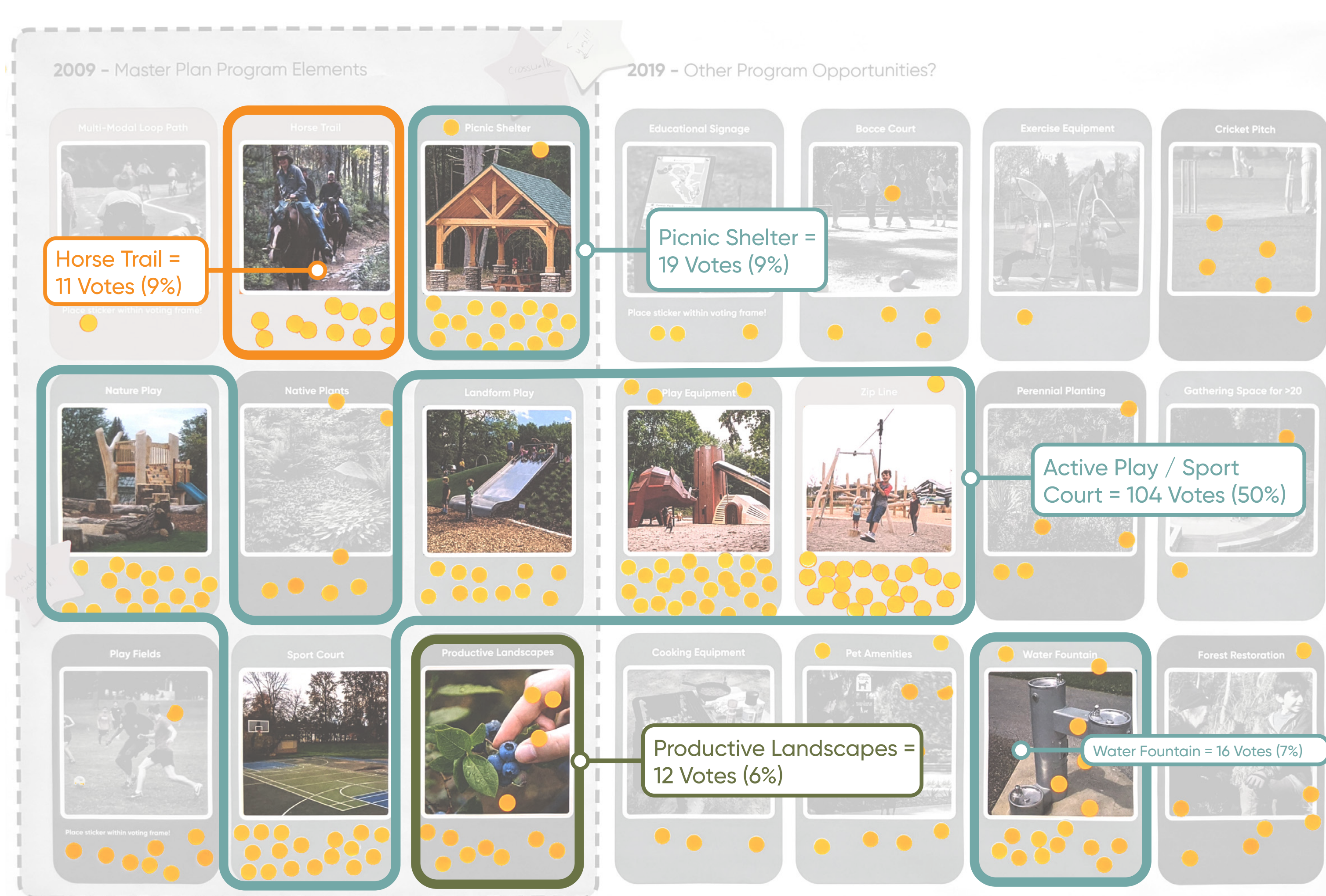
## 2019 Public Check-in (11/20/2019 Meeting)

### Public Check-in Goals:

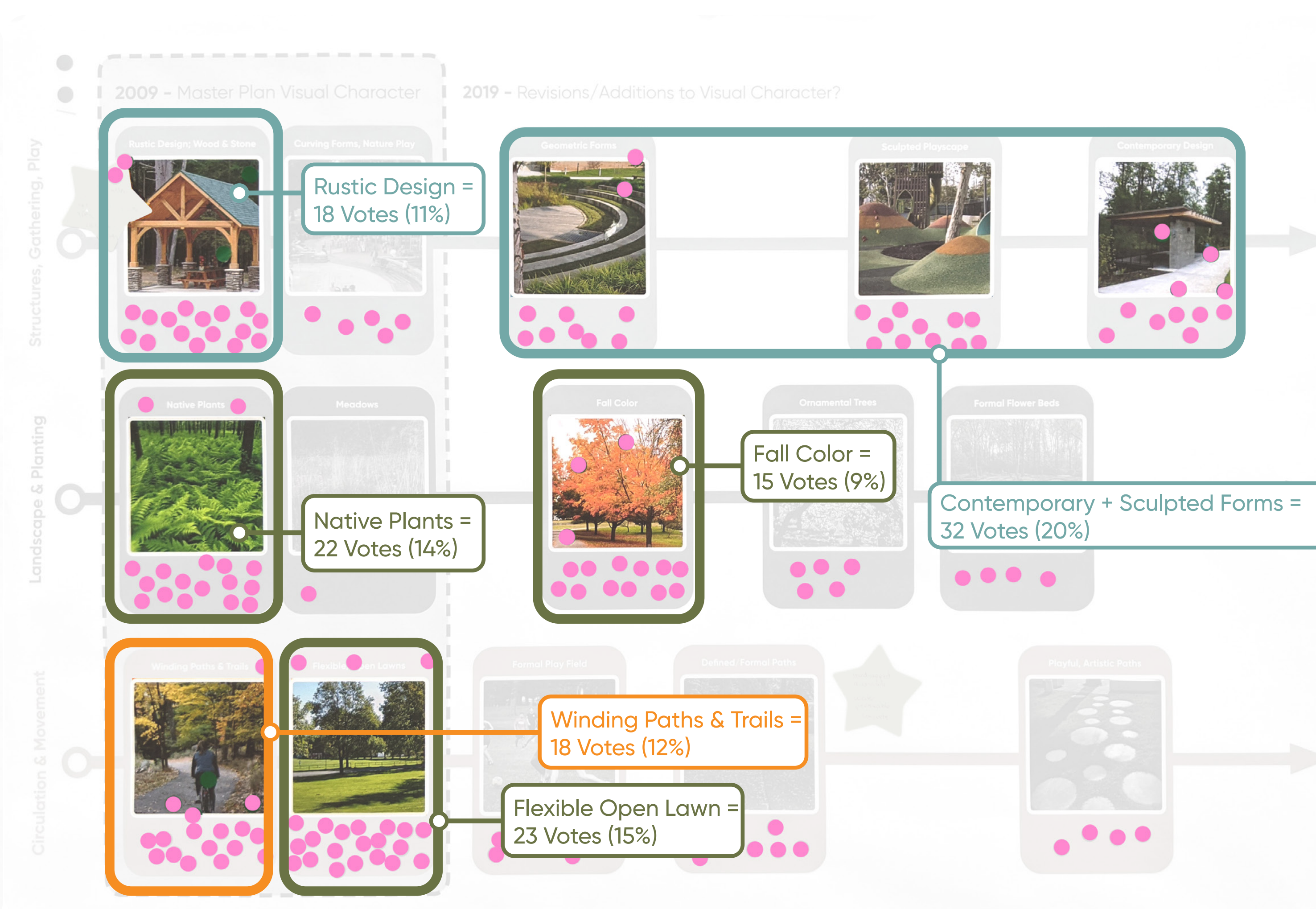
1. Revise Master Plan to minimize or avoid impacts to critical areas
2. Revisit community preferences for Park program and visual character



### Program Elements - 213 Votes



### Visual Character - 156 Votes



### Key Findings:

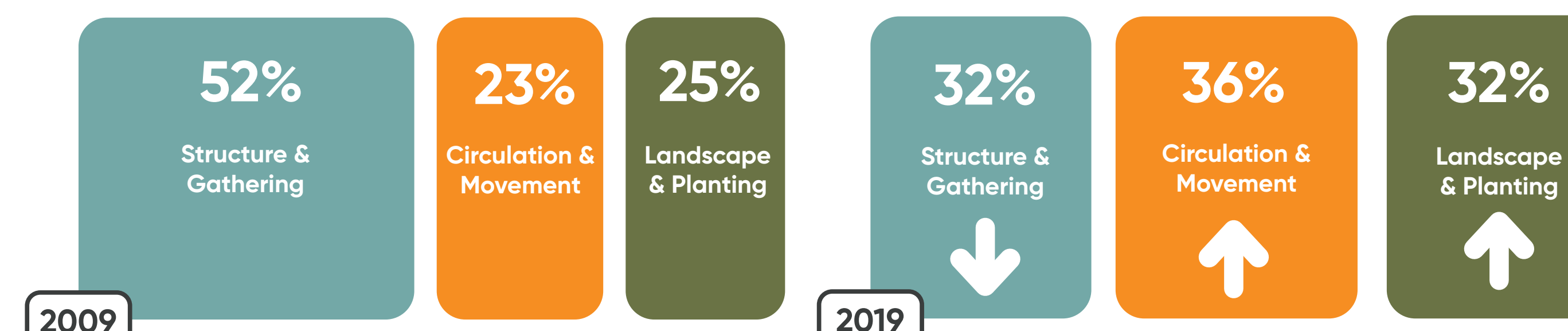
**50%**  
of all programming votes were for Play or Sport related elements

**PRODUCTIVE LANDSCAPE**  
received the most votes of all Landscape & Planting program elements

**PLAY EQUIPMENT**  
received the most votes of all program elements

**50/50**  
split on preference of contemporary vs naturalized visual character

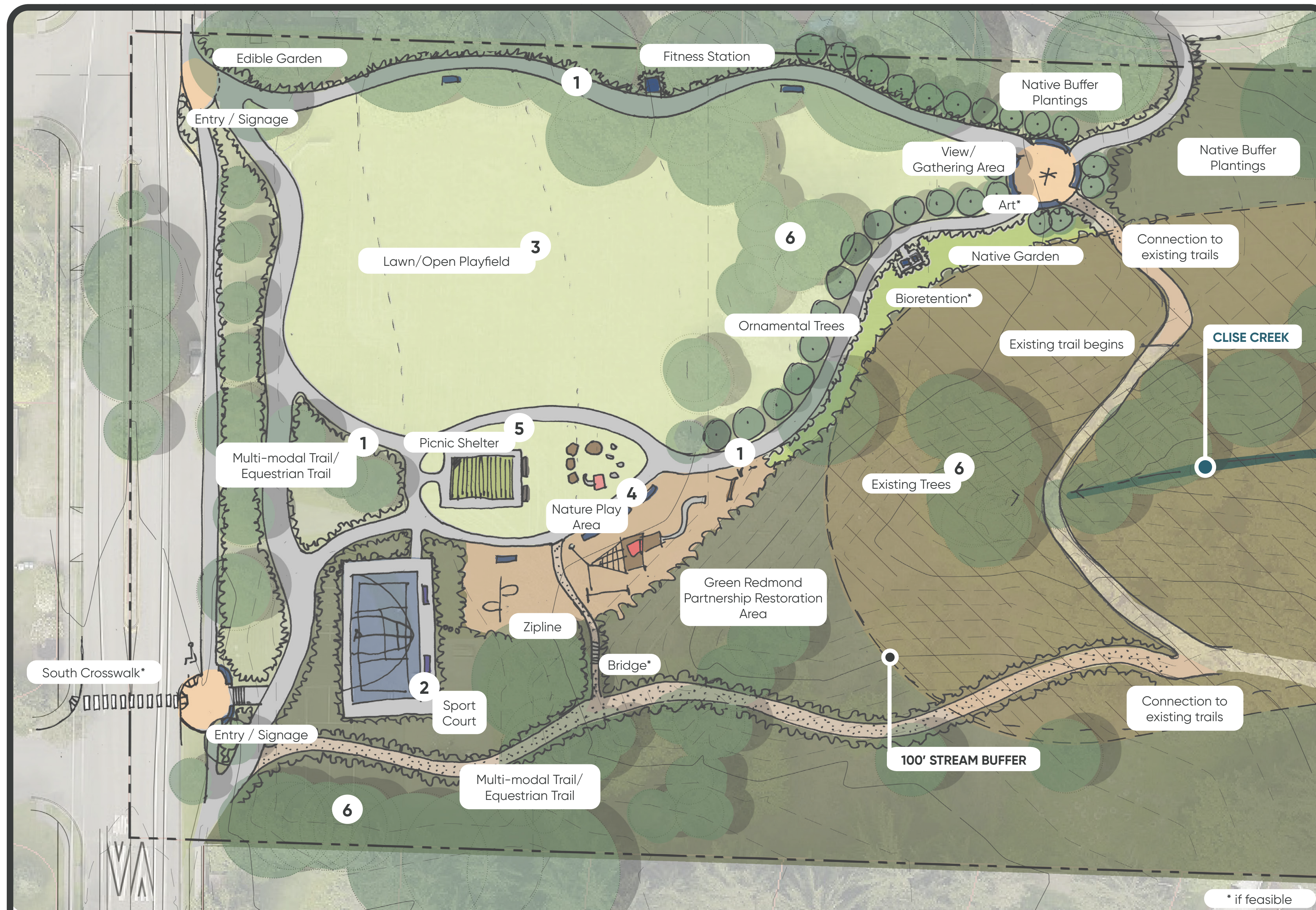
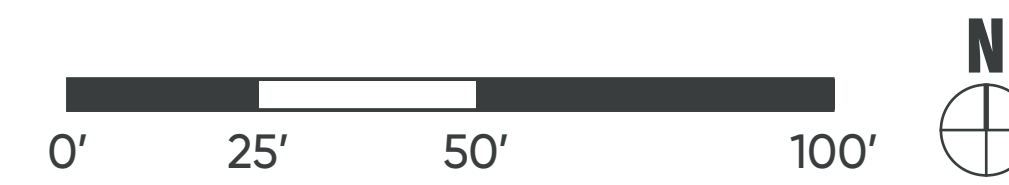
### Overall Trends from 2009-2019



**WILDLIFE, HABITAT & EXISTING TREES**  
remains an important feature for voters



## Woodsy! Option - Vote for this option with the ( ) Dot!



Place Voting Sticker Here!



### Key characteristics of this concept

1. The **1/4 Mile Loop Trail** provides a variety of options for longer or shorter routes with quicker access to the woods, especially for equestrians
2. To increase the natural area, the size of the sport court is reduced to a **Multi-sport half-court** that includes basketball, pickleball and soccer
3. A **large open lawn** allows for flexible play and informal pick-up sports
4. Maximizing proximity to the natural area, the playground features **accessible nature play elements**
5. A **rustic picnic shelter** provides year round use
6. All existing trees are protected, the **natural area is expanded**, and native & **edible gardens** and ornamental trees are added

## Program Elements - Vote for these options with the ( ) Dot!

### Rustic Shelter



Place voting stickers within the card!

### Extended Loop Path



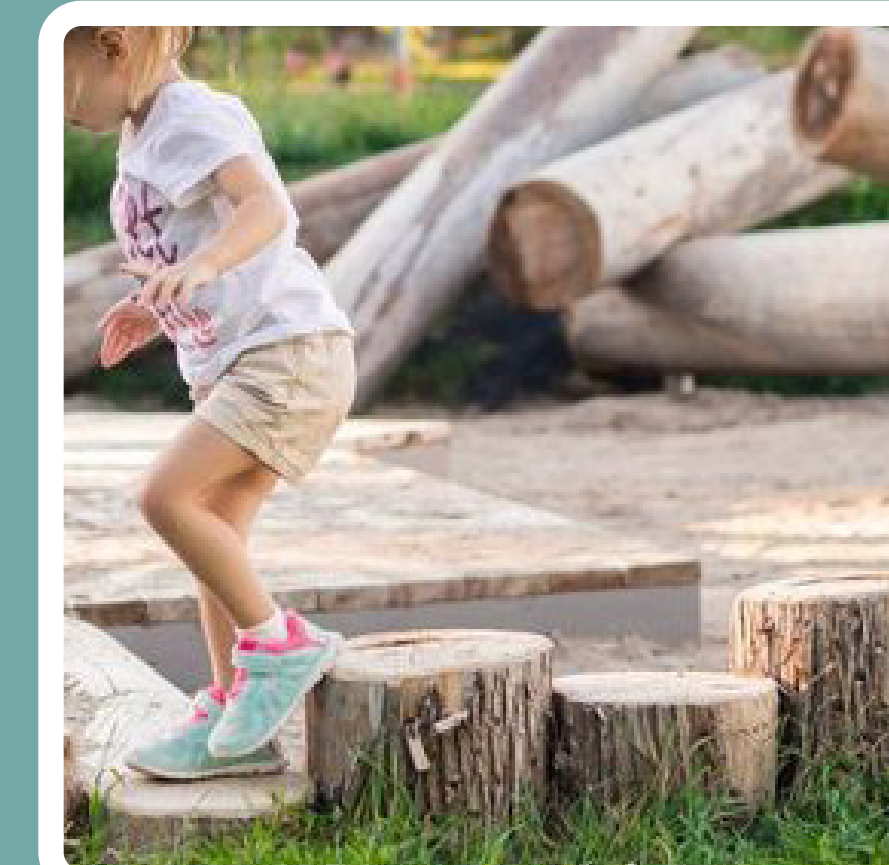
### Contemplative Gathering Area



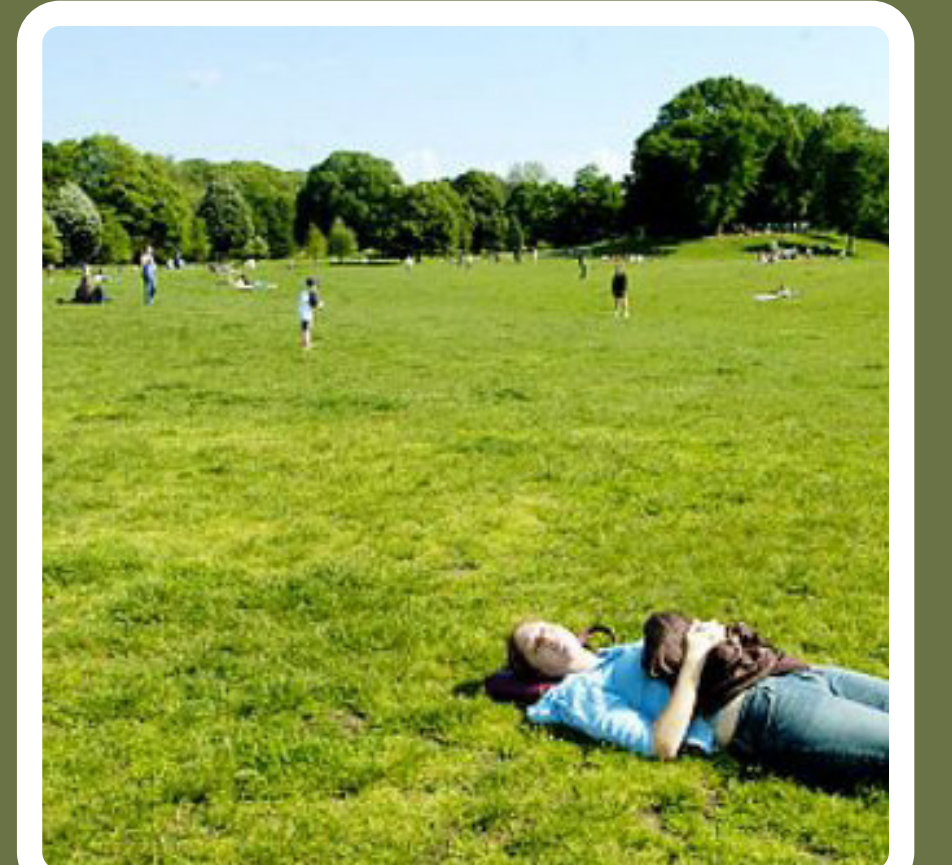
### Nature Play Equipment



### Natural Materials Play



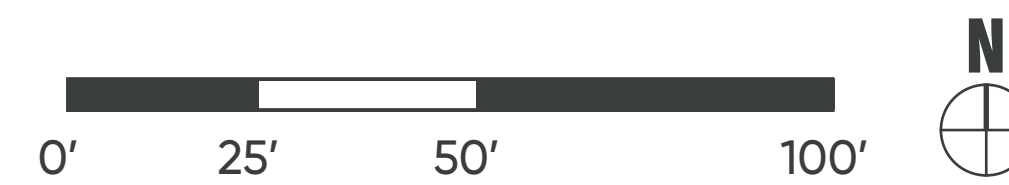
### Large Flexible Lawn



Additional comments? Write it down below!



## Active! Option - Vote for this option with the ( ) Dot!



Place Voting Sticker Here!



### Key characteristics of this concept

1. A **1/5 Mile Loop Trail** connects major features of the park for easy access
2. The **Sport Court is expanded** to allow for multiple sports including a fitness area
3. The **three flexible open lawns** allow for multiple activities at the same time
4. A **large, more central playground** connects to the open lawns, picnic shelter, and includes a **sensory garden**
5. An ecofriendly **picnic shelter** is sustainably designed and **provides environmental benefits**
6. Native gardens and a **butterfly & hummingbird garden** are added in addition to protecting the existing trees

## Program Elements - Vote for these options with the ( ) Dot!

### Eco Friendly Shelter



Place voting stickers within the card!

### Landform Play



### Contemporary Play Equipment



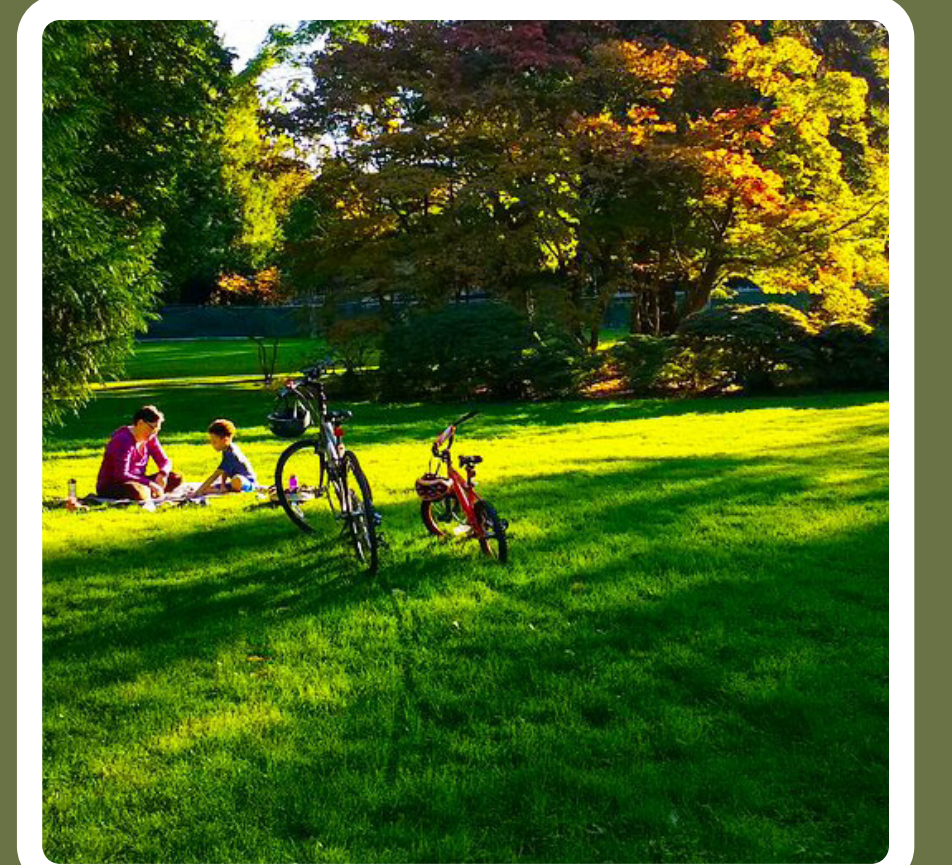
### Sport + Fitness Area



### Sensory Walk



### Multiple Play Fields



Additional comments? Write it down below!