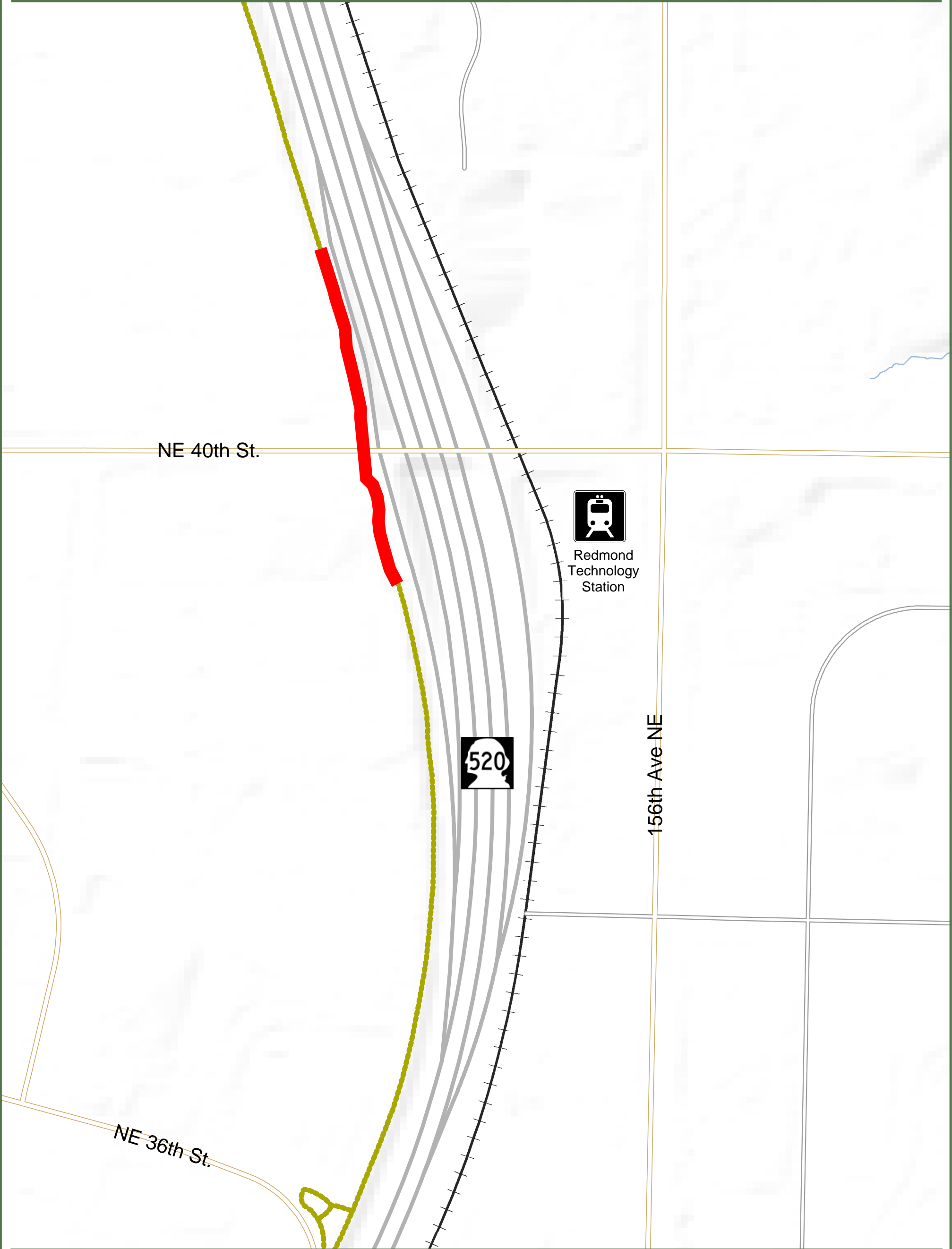








SR 520 Trail Grade Separation at 40th St.

City of Redmond, Washington



Disclaimer: This map is created with data maintained by GIS Services Group, Technology and Information Services, City of Redmond, Washington. For reference purposes only.

LEGEND

- | | | | |
|---|--------------|---|--------------|
|  | Project Area |  | SR 520 |
|  | 520 Trail |  | Arterial |
|  | Light Rail |  | Local Access |

