

Redmond **WESTSIDE PARK** Renovation

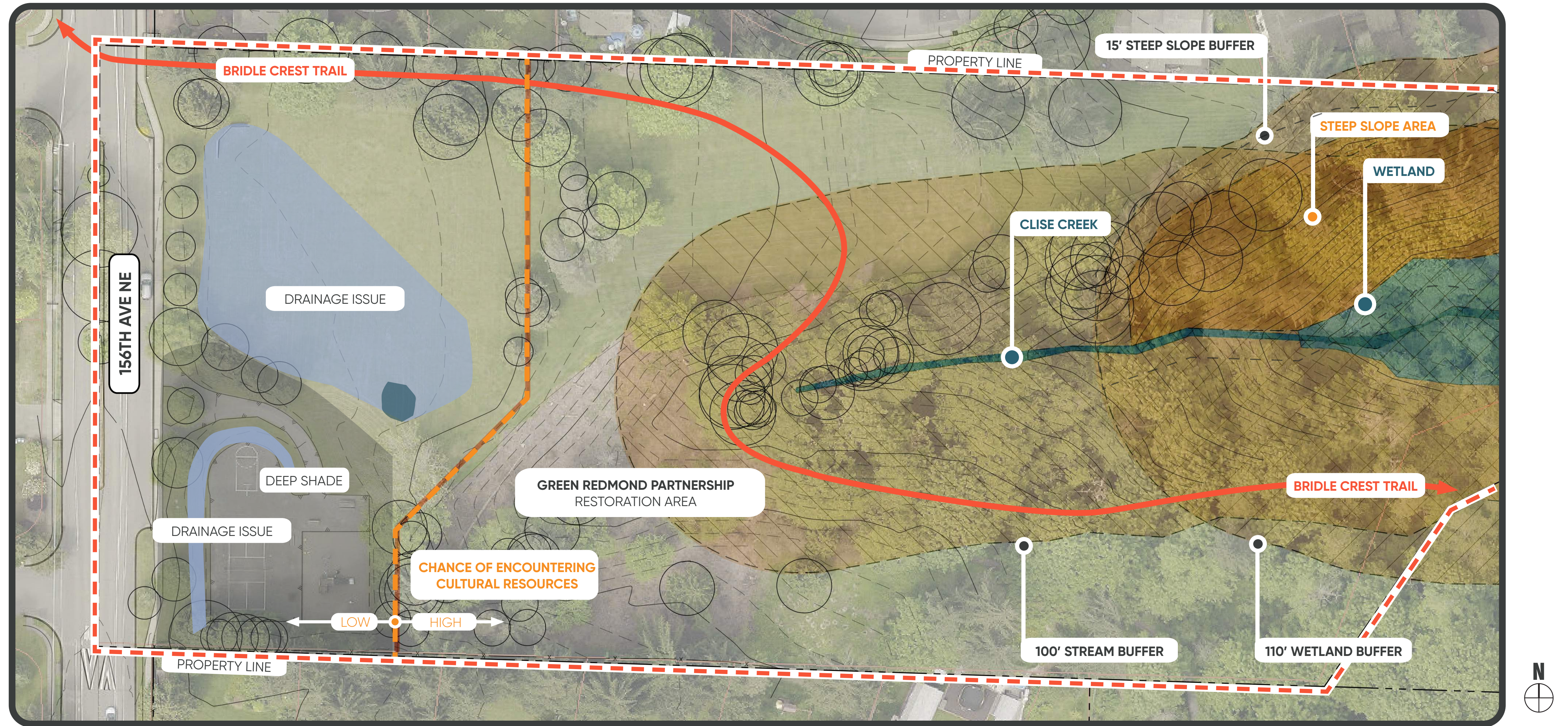
Project Overview

Westside Park is a **47-year-old neighborhood park** in the Overlake Neighborhood. Existing recreation features include a small playground, open ball field, half basketball court, and open space. Recreation is currently limited in the 6.4 acre park due to poor drainage and outdated play equipment. **The Bridle Crest Trail** traverses through Westside park and through a forested ravine leading towards Marymoor Park.

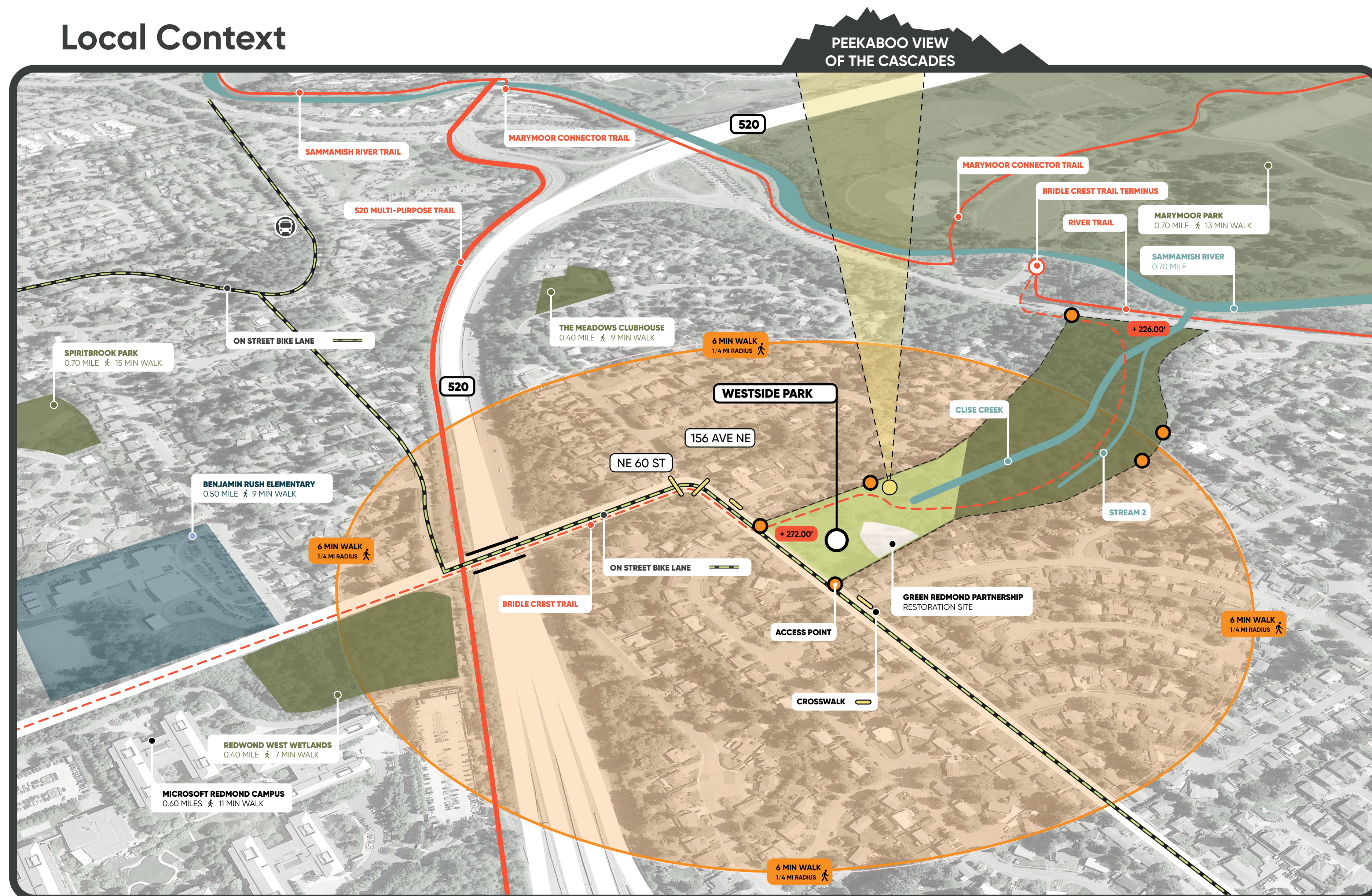
The park was acquired by the City in 1968, developed in the 1970s and extensively renovated in 1991. **A master planning process was undertaken in 2009 to update the park** and included extensive input from residents in the neighborhood. The master plan included some improvements to the Bridle Crest Trail, including a more defined trail through the active portion of the park and signage. The park is both a **neighborhood destination** for activities and an **important connection in Redmond for pedestrians, cyclists and equestrians**.

The overall project budget is \$2.6 million.

Current Conditions Map



Local Context



Project Goals

The City of Redmond seeks to refine and update the Westside Park master plan with the community and finalize the park design. Proposed park elements include:

- **Construct playground in new location**
- **Install drainage for open lawn space**
- **Construct an enhanced or expanded sport court**
- **Construct an open picnic shelter**
- **Expand irrigation system**
- **Construct new pathways and trails to connect park elements**

Upcoming Schedule

November 18, 2019
Community Check-in

January 27, 2020
Two Concepts Public Meeting

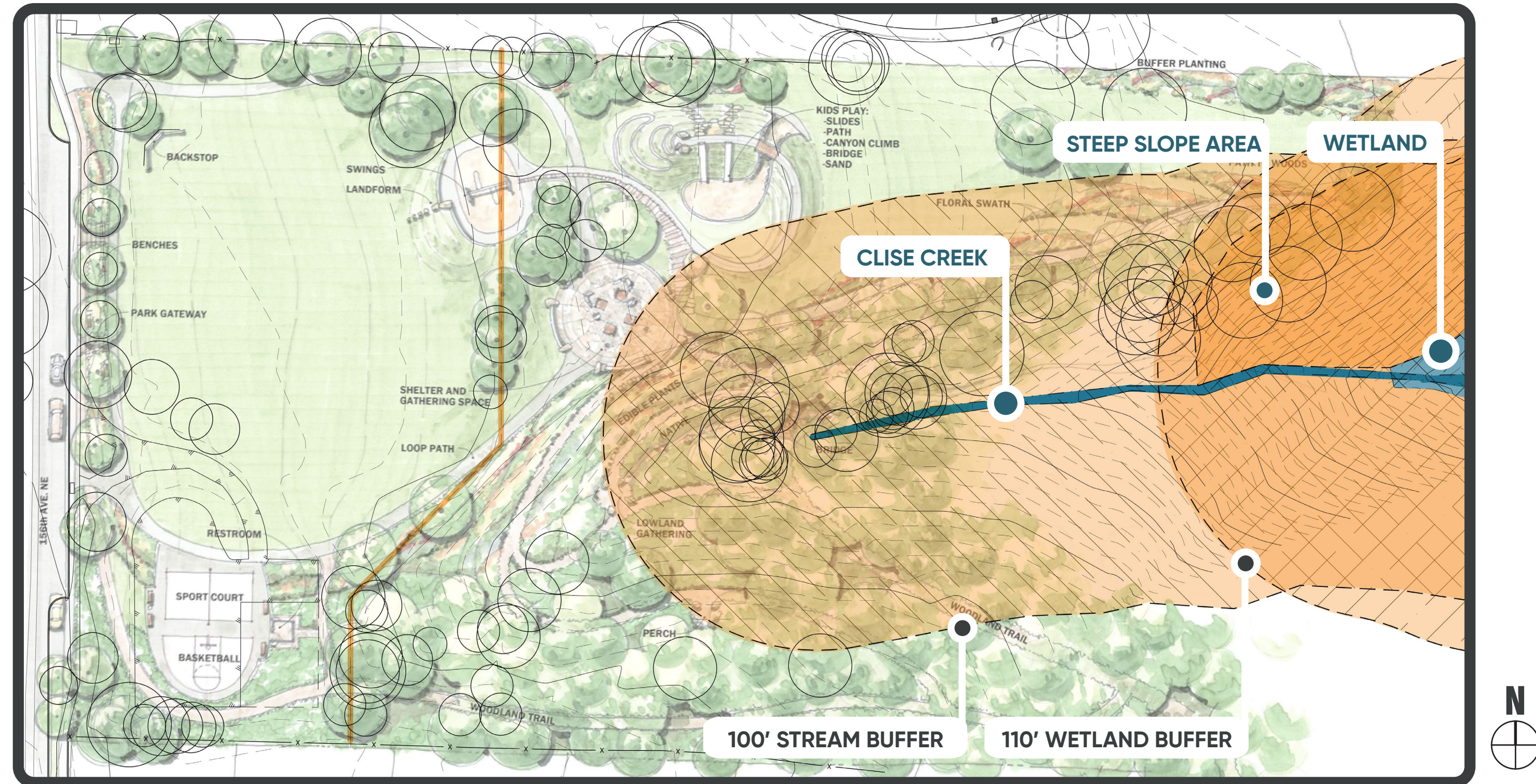
February 24, 2020

Preferred Option Presentation

2020 - 2021

Design Development & Construction

2009 Master Plan with Critical Area Overlays



Recap of Community Preferences

Public Input #1 + Online Survey Feedback

These elements were incorporated into the design of both options



Horse Trail



Picnic Shelter



Active Play Area & Sport Court



Winding Paths



Flexible, Open Lawns



Native Plants & Fall Color

Public Input #2 + Online Survey Feedback

This feedback was integrated into the preferred plan.



Horse Trail Alignment to the North end of Park



Wood Shelter with Ecofriendly Aesthetics



Consolidate Active Rec + Play Zones



1/4 mile Loop Path



Large Lawn Space



Nature Play Aesthetics

Check out the Preferred Plan! →

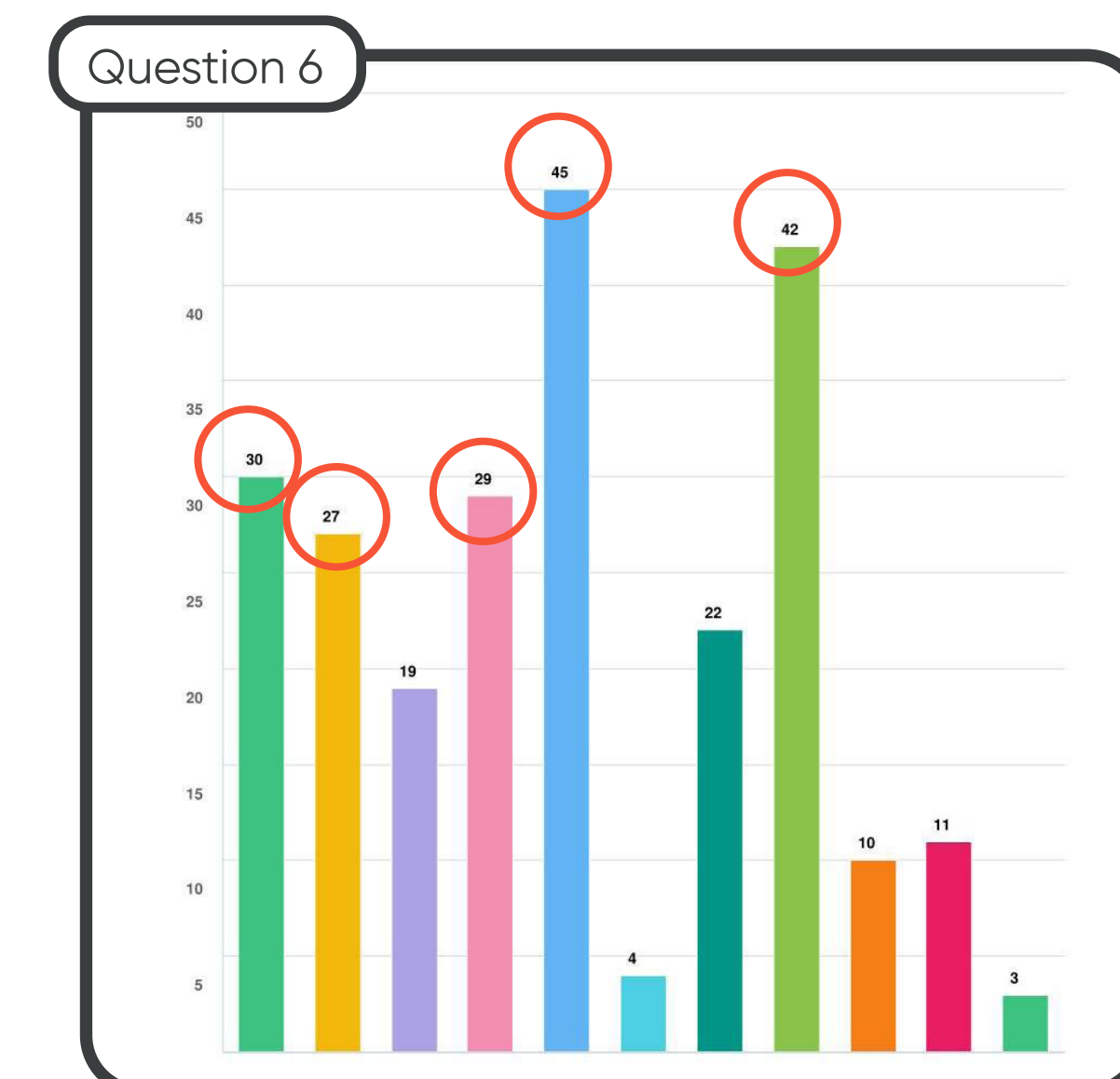
Public Input Session #2 - Two Options (01/27/2020 Meeting + Online Survey)

Public Check-in Goals:

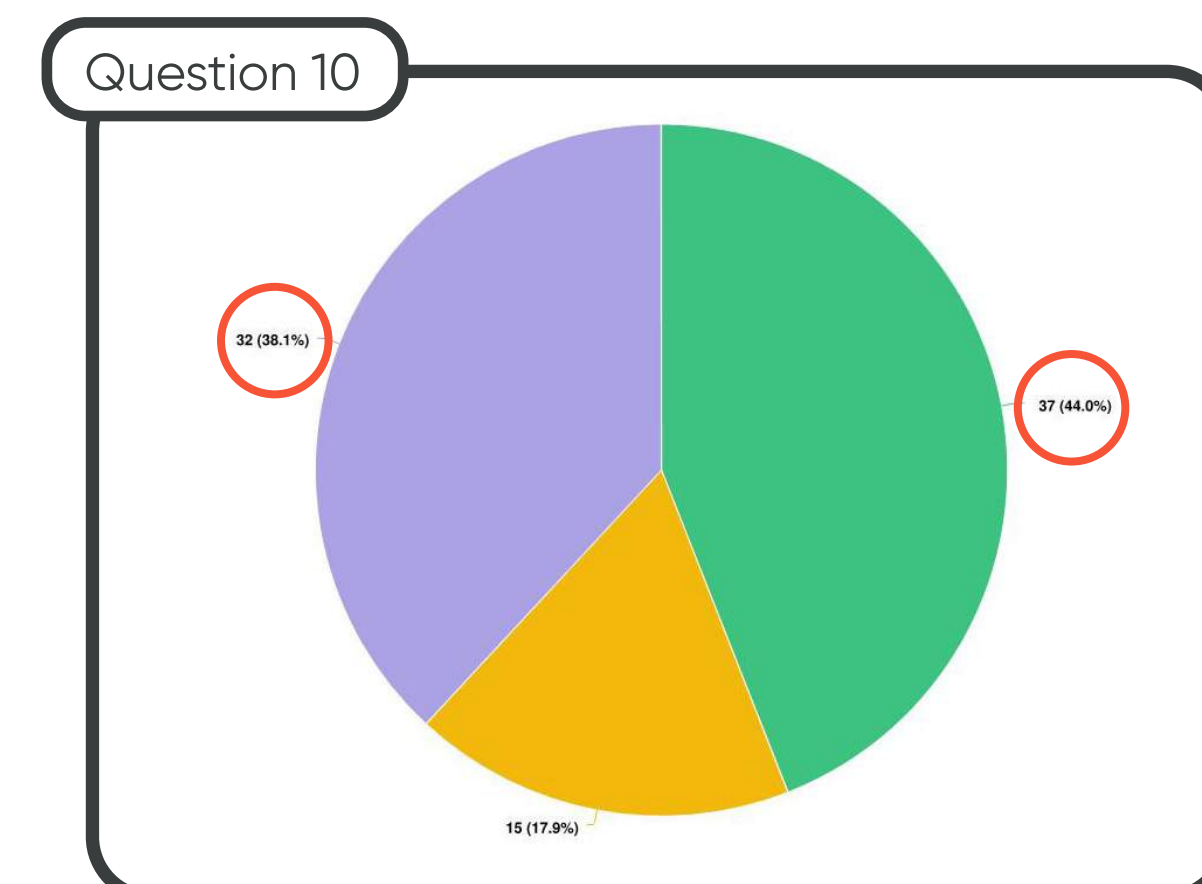
1. Review feedback from Public Input Session #1 + Online Survey
2. Provide voting opportunity for the two design options



Online Survey #2 - Highlights



Top Five Play Elements, in order: Lookout Platform, Zipline, Climbing Structure, Disc Swings, and Slide.



Native and Butterfly gardens were highly preferred over Edible gardens in second round of voting.

Dot Voting Results



Key Takeaways (includes Survey)

Extended Loop Path = 84 Votes (87%)

Woodsy! Option = 83 Votes (67%)

Nature Play = 58 (45%)

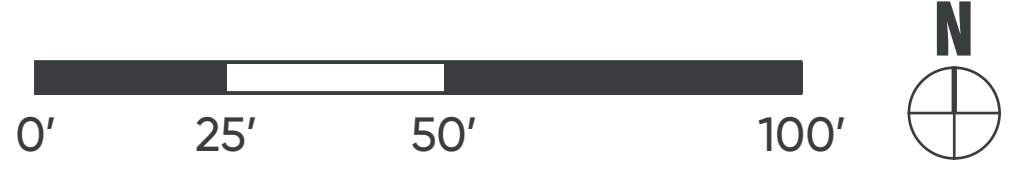
- One large field provides sightlines across park, team sports, and multiple activities plus room for trees, loop path & drainage
- Keep backstop for meeting spot & practice
- Play features should differentiate Westside from other city parks
- Preference for a crosswalk on the north end

Sustainable Shelter = 73 Votes (60%)

Multisport Court = 82 Votes (77%)

Multiple Playfields = 65 Votes (86%)*

Preferred Plan - Woodsy!



Program + Circulation Diagram



Key characteristics of the Preferred Plan

- 1. The **1/4 Mile Loop Trail** provides a variety of options for longer or shorter routes with quicker access to the woods, and **equestrian access to the North**.
- 2. The active recreation zone is expanded for a **Multi-sport Court** that includes **Basketball & soccer** and a **pickleball court**, in addition to stationary fitness equipment.
- 3. A **large open lawn**** allows for flexible play, open sightlines, & informal pick-up sports.
- 4. Maximizing proximity to the natural area and connecting to the active recreation zone, the playground space features a host of **accessible Nature Play elements**
- 5. An **Ecofriendly Park Shelter** provides year round use and is sized to accomodate three picnic tables. The Park Shelter acts as the node between the lawn and active areas.
- 6. **Existing trees** are protected, the **natural area is expanded**, **native and butterfly gardens** border walkways, and **ornamental trees** are added across the site

** One large field was selected instead of multiple fields so that a loop path and enough space is available for natural drainage systems

Future Program Elements

1

Extended Loop Path

2

Sport + Fitness Area

3

Playfields

4

Nature Play Equipment

4

Natural Materials Play

5

EcoFriendly & Rustic Shelter

6

Native Garden