

COUNCIL BUSINESS MEETING

Regional Planning Initiatives | Comprehensive Planning

City Council
March 17, 2020



The purpose of this briefing is to provide an overview of:

- The Growth Management Act | state requirements and timelines for the Redmond Comprehensive Plan update
- *Vision 2050* and the Countywide Planning Policies | Regional and County Planning framework

UPCOMING BRIEFINGS

Attachment A

WE ARE HERE



March
2020

*State and Regional
Planning Context*



May
2020

- *Redmond 2050
Scope and Public
Involvement Plan*



April
2020

- *Questions about Regional
Planning Context*
- *Redmond 2050- Overview*



June
2020

- *King County Briefing on
Land Capacity Study and
Growth Targets*



- March 10, 2020 Planning and Public Works Committee of the Whole

RCW 36.70A.130

- *(1)(a) Each comprehensive land use plan and development regulations shall be subject to continuing review and evaluation by the county or city that adopted them*
- **King County | Redmond Update Due Date: 6/2023**

COMPREHENSIVE PLAN UPDATES: ANNUAL AND PERIODIC

Attachment A

2015 GMA
Required
Periodic
Review



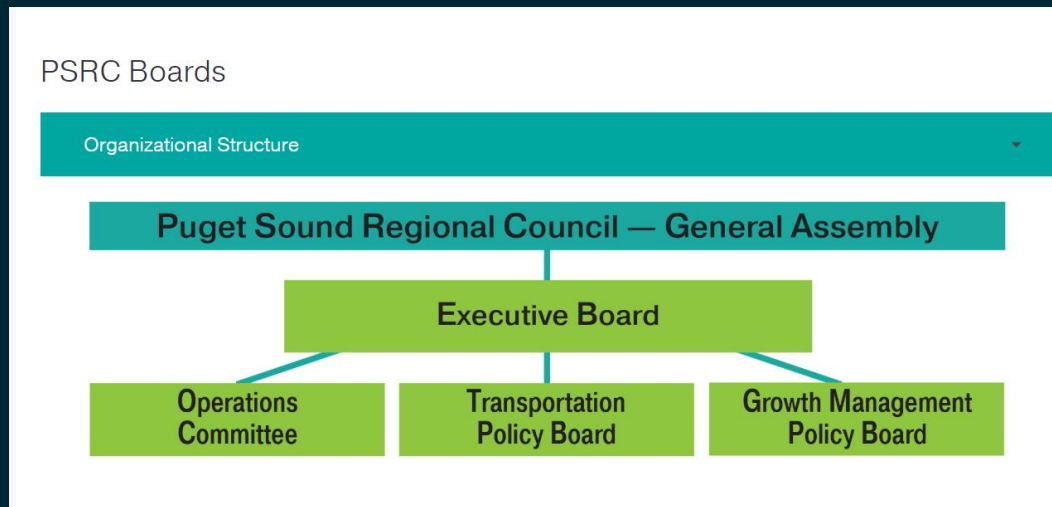
2023 GMA
Required
Periodic
Review



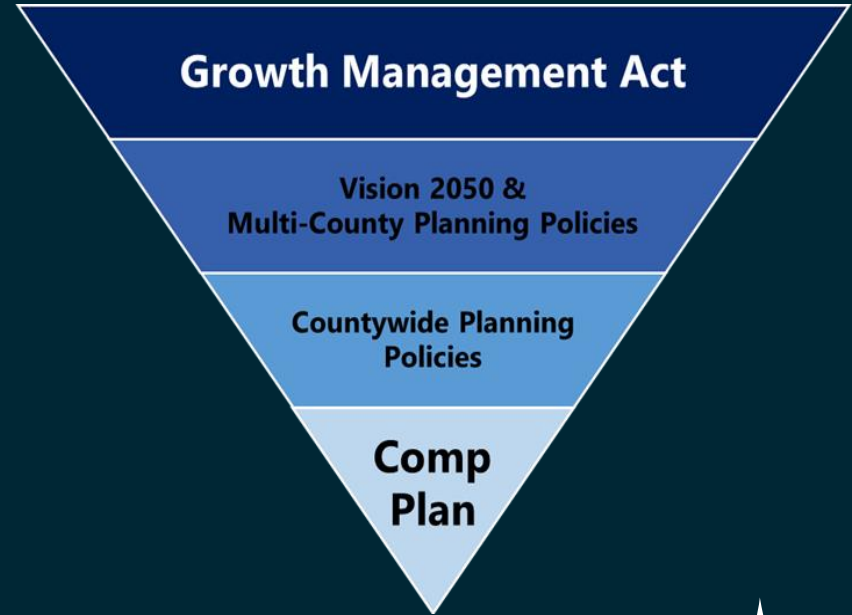
Optional Annual Review – Minor Updates



- Metropolitan Planning Organization
- Regional growth, transportation and economic development planning
- Provides framework for distribution of forecasted growth
- Regional Planning -Vision 2050 – multicounty planning policies



- **PSRC** -Regional Growth Strategy
- **King County** – adopts population and employment growth targets (with cities)
- **City of Redmond** – Use growth targets to inform local comprehensive plans – land use, transportation and capital facilities



Population Growth 2017-50 – Preferred Alternative

- King County will receive 50% of the regional growth - 872,000
- Core cities* will receive 40% of that growth - 346,000

Employment Growth 2017-50 – Preferred Alternative

- King County will receive 59% of the regional growth - 682,000
- Core cities* will receive 40% of that growth - 310,000



* Core Cities (11 in King County including Redmond)



MPP-RGS-8 Attract 65% of the region's residential growth and 75% of the region's employment growth to the regional growth centers and high-capacity transit station areas.

... As jurisdictions plan for growth targets, focus development near high-capacity transit to achieve the regional goal.

NEXT STEPS

April 14, 2020

Study Session – Comprehensive Plan
Update

May 18, 2020

Staff Report Comprehensive Plan Scope
and Community Involvement Plan

June 16, 2020

King County Briefing Growth Targets



THANK YOU

Questions?

Beverly Mesa-Zendt AICP
bmesa-zendt@redmond.gov

425.556.2423

