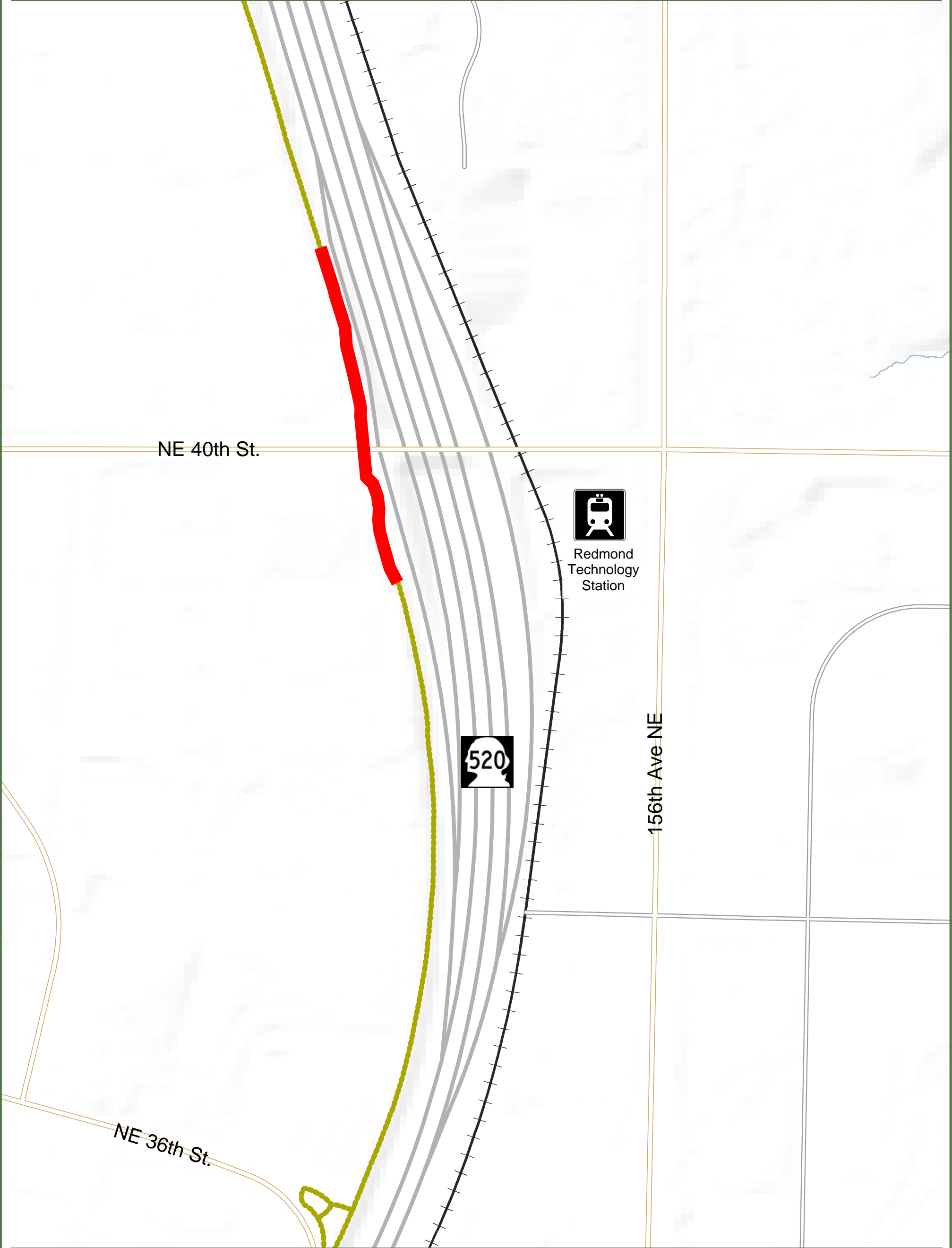


SR 520 Trail Grade Separation at 40th St.

City of Redmond, Washington



Disclaimer: This map is created with data maintained by GIS Services Group, Technology and Information Services, City of Redmond, Washington. For reference purposes only.

LEGEND

- | | | | |
|--|--------------|--|--------------|
| | Project Area | | SR 520 |
| | 520 Trail | | Arterial |
| | Light Rail | | Local Access |

