

ATTACHMENT B

Redmond 2050 First Quarter 2021 Community Involvement Summary

OVERVIEW

Community involvement increased and broadened in the first quarter of 2021 as we focused on ensuring reaching historically underrepresented groups in our visioning phase.

In the first quarter of 2021 we had almost 1,000 visitors to our Redmond 2050 web page and 420 visits to our virtual lobby, with 250 hits to our main Documents page and over 100 visitors to the alternative lobby site.

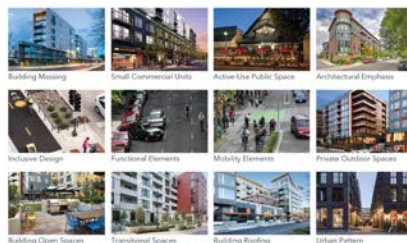
In addition to online engagement, our consulting team conducted stakeholder interviews and focus groups, as well as connected with Redmond High School students to capture voices that we hadn't heard from. We specifically reached out to cultural, religious, and social organizations and have assembled a disabilities stakeholder group that will begin meeting soon, to ensure broad participation for historically underrepresented groups.

As we near the end of our visioning tasks, community priorities are becoming clear and we can move into the next tasks with clarity. Staff will begin to evaluate growth scenarios and develop policy options and alternatives with community priorities in mind.

LET'S CONNECT: ONLINE QUESTIONNAIRES

We recently concluded two visioning questionnaires for Redmond 2050, with 375 responses in total. These questionnaires focused on design elements and will help us evaluate what changes we might want to make to our design guidelines and if and how we might create different character elements for different areas of our city.

12 DESIGN PRINCIPLES



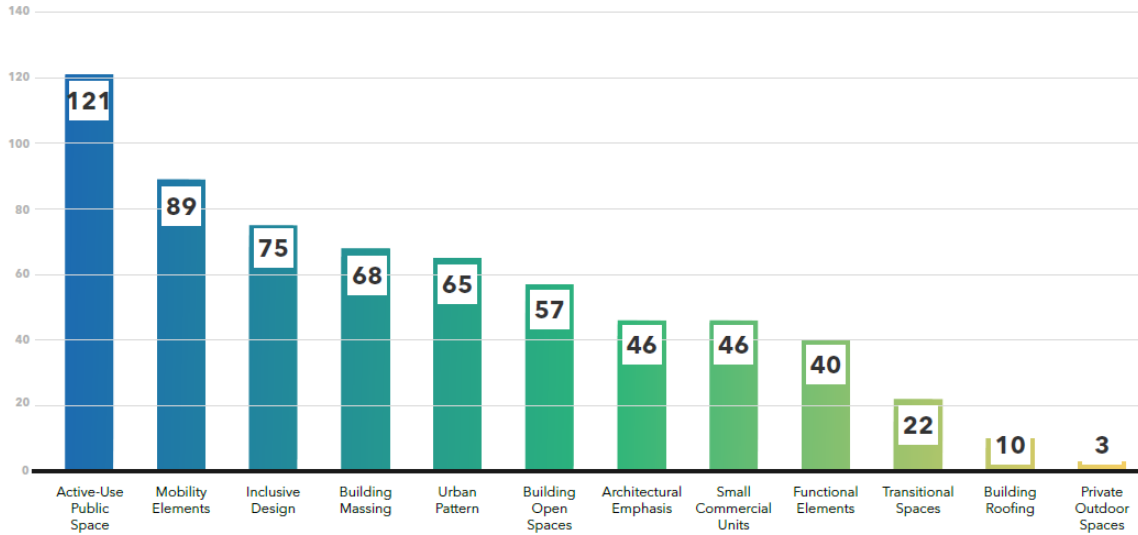
12 LOOK AND FEEL ELEMENTS



The top three most important design principles to the community were active-use public space, mobility, and inclusive design. Many community members expressed a desire to see different designs for Overlake than Downtown. For design elements, facades and vegetation had a much higher priority than other elements.

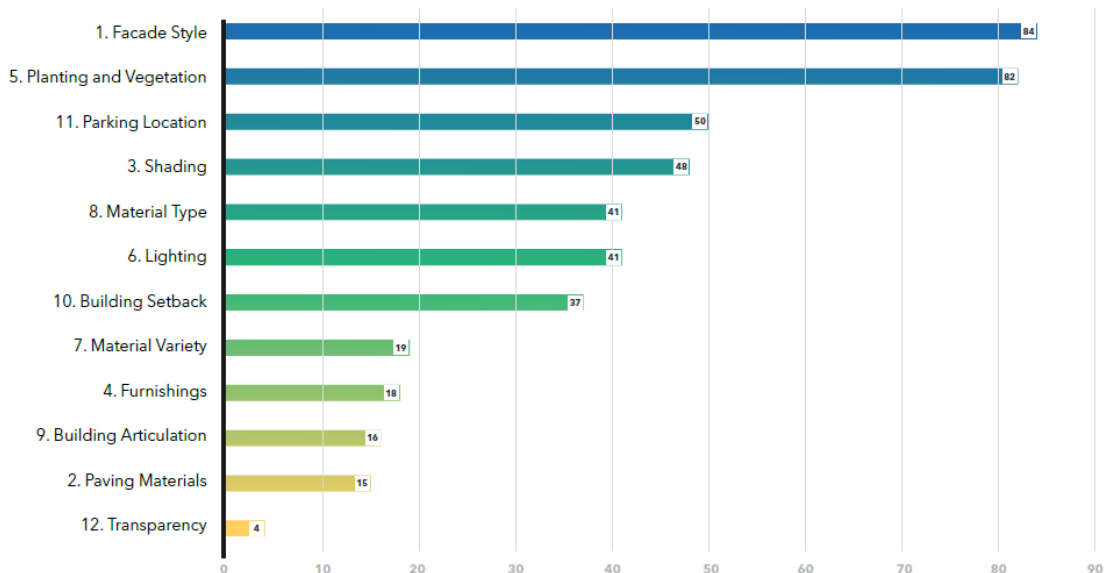
DESIGN PRINCIPLES PRIORITIES

SURVEY RESPONDANTS WERE ASKED TO SELECT THE 3 DESIGN PRINCIPLES THAT ARE MOST IMPORTANT TO THEIR EXPERIENCE LIVING, WORKING, OR VISITING THE CITY OF REDMOND. **ACTIVE-USE PUBLIC SPACE, MOBILITY ELEMENTS, AND INCLUSIVE DESIGN** ARE THE MOST IMPORTANT PRINCIPLES.



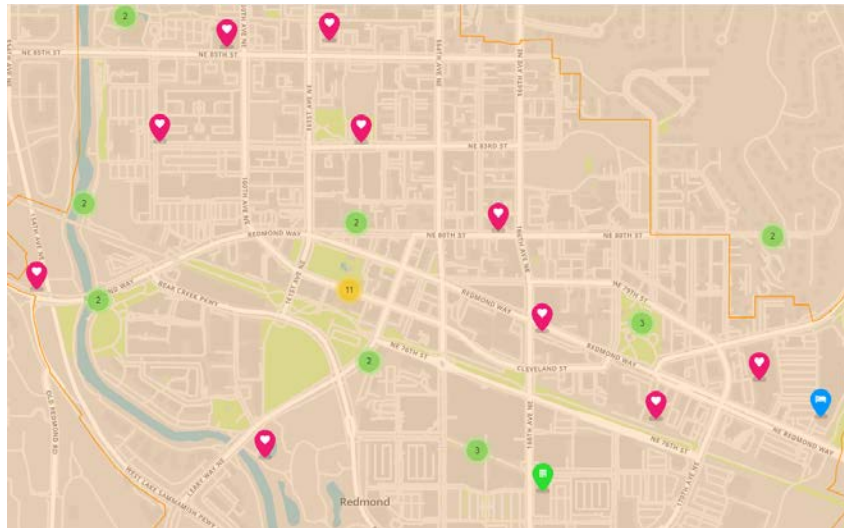
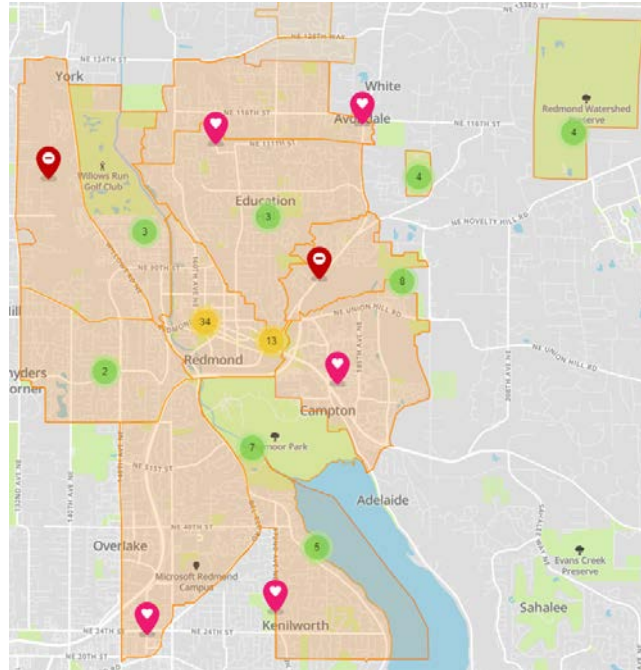
LOOK & FEEL PRIORITIES

SURVEY RESPONDANTS WERE ASKED TO SELECT THE 3 LOOK & FEEL ELEMENTS THAT ARE MOST IMPORTANT TO THEIR EXPERIENCE LIVING, WORKING, OR VISITING THE CITY OF REDMOND. **FACADE STYLE** AND **PLANTING & VEGETATION** ARE THE MOST IMPORTANT PRINCIPLES.



Redmond 2050 Community Engagement Summary: Q1 2021

We also have an interactive map for residents and visitors to share what places they love in Redmond, and areas that need work. This exercise will help staff better understand the places and things that are treasured in Redmond and that give the city its character. Many comments were placed in Downtown, with the Downtown Park area in particular receiving lots of comments.



We also have a questionnaire live now for small businesses, particularly small businesses in Overlake, to supplement focus groups and interviews that were held in February. The questionnaire was translated into several languages and personal invitations were sent out in multiple languages to encourage broad participation.

STAKEHOLDER INTERVIEWS

Recognizing that different stakeholder groups have different engagement needs, the City facilitated a series of interviews with groups that were underrepresented in prior engagement opportunities. Interviews were held with leaders from community-based organizations that serve Redmond's communities of color, individuals and families with low and moderate incomes, people living with disabilities, small and BIPOC-owned businesses, and the Redmond Youth Partnership Advisory Committee (RYPAC). Key issues that emerged as priorities include diversity and inclusion, housing opportunities, supporting small business & living wage jobs, mobility, and cultural spaces in Redmond.

Staff has begun meeting with Microsoft to share information about the Overlake Plan Update and better understand Microsoft's interests. We will be working with them to ensure we understand their perspectives and goals as we work to update the Overlake Plan and prepare a new SEPA Planned Action for Overlake.

Our SEPA consulting team has also been conducting stakeholder interviews with developers with projects in Overlake to determine if there are any lessons learned and to identify needs as we prepare to create a new SEPA Planned Action for Overlake. Interviews will continue, but early feedback has been that the process is extremely helpful but little known, as most developers learned about the planned action after they started a project. The process itself has been satisfactory, but additional advertisement of the Planned Action might be helpful for property owners and developers.

THEMES



Equity & Inclusion



Sustainability



Resiliency



Technology Forward

Conversations around the themes have continued and include conversations with the Parks and Trails Commission, the Human Services Commission, and the Community Advisory Committee, as well as city staff from multiple departments. Staff has been seeking input on the following questions:

- What does this theme/concept mean to you? Does our working definition need any adjustment?
- What does [theme] mean to your daily experiences in our community?

Redmond 2050 Community Engagement Summary: Q1 2021

- What stories would you like to share that would help us understand your thoughts on this theme?
- How does/should [theme] impact our built and natural environment?

The working definitions will be refined based on these comments and staff will add statements of intent to help clarify the goals for these themes with more details than can be captured in the definition. Additional community engagement will occur for a few months after the revised definitions and intent statements have been developed.

Staff is also working on a review “lens” for each theme that will be used to evaluate Comprehensive Plan policies to see what changes can be made to support the advancement of these themes. Staff review of the element will determine:

- Strengths and deficiencies of the element regarding advancement of the theme; and
- Identifying if there is anything missing, or any changes needed, to support these themes.

Staff will then draft revisions, where the update is clear and simple, or will research options and alternatives where additional policy discussion is needed. Before taking options and alternatives and draft language forward for review, policies will be evaluated based on:

- Whether the policy option/alternative/draft language advances or hinders the theme; and
- Alignment with the reoccurring community themes and community priorities.

NEXT STEPS / COMING SOON

- A questionnaire is currently live for businesses in Redmond.
- Stakeholder groups and a Technical Advisory Group will start meeting.
- Community engagement on themes will continue.
- Overlake urban center boundary revision options will be developed and discussed with the community and stakeholders.
- Discussions are beginning on defining transit-oriented development (TOD) for Redmond.
- Staff is working with our subject matter experts to review comments on the working definitions for themes to develop revised definitions.

DETAILED ENGAGEMENT SUMMARIES

Detailed summary reports can be found online at www.Redmond.gov/1495/Engagement-Summaries. First quarter 2021 elements included:

- [Visioning Design Elements](#)
- Stakeholder & Working Groups
 - [Minority & Small Businesses](#)
 - [Business Roundtable](#)
- [Themes](#) - working definitions feedback and general comments on themes
- [Transportation](#) (round two)